

# LINKBREAK CUTOUT INSTRUCTIONS FOR INSTALLATION, OPERATION AND MAINTENANCE

## GENERAL

### ⚠ DANGER

The A. B. Chance Type C Linkbreak Cutout is for protection of equipment only. It DOES NOT protect personnel from injury or electrocution if contact with energized circuits or hardware occurs.

The A. B. Chance Company Type "C" Linkbreak Cutout is an expulsion type distribution fuse. Its primary functions are to interrupt fault or overload current within its rating on a distribution line to protect the electric circuit and/or connected equipment and to provide a loadbreaking capability to intentionally isolate connected equipment.

## INSTALLATION

**NOTE:** A properly sized cutout must be selected for each installation with consideration to recovery voltage, continuous current, BIL and fault interrupting rating. Should there be any concern regarding use of this cutout as rated, consult your supervisor before installation.

Securely attach mounting bracket, if supplied with cutout, to crossarm or pole.

### ⚠ WARNING

DO NOT mount this cutout in vaults or other enclosed areas because of the expulsion emitted during fault interruption.

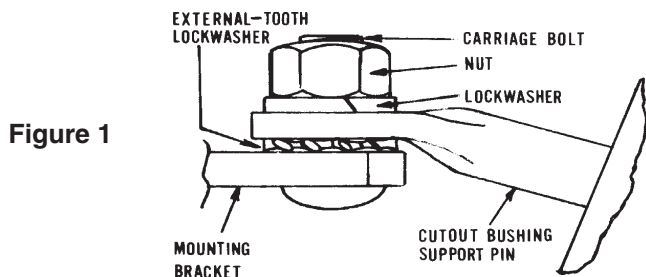


Figure 1

Mount the cutout on the mounting bracket with the external tooth lockwasher placed between the mounting bracket and the cutout bushing support pin (see Figure 1). Tighten the nut finger tight. Rotate the cutout on the mounting bracket to provide maximum clearance for the operator and vented ends which expel hot gases and high velocity particles during interruption and to provide maximum ease of operation. Securely tighten carriage bolt nut.

To attach electrical leads, first loosen top and bottom terminal washer faced nuts. Wire brush conductors and apply a coating of oxidation inhibitor before inserting conductor into terminal. Tighten washer faced nuts to approximately 20 ft./lb.

### ⚠ WARNING

Do not use fuselinks in this cutout which require more than one inch elongation before breaking. Doing so can result in severe personal injury or equipment damage. Consult the A. B. Chance Co. if you have any questions relating to fuselinks which meet the elongation requirements.

To install the fuselink in the fuseholder, remove the cap from the upper ferrule of the fuseholder assembly. Slide the fuselink, cable end first, into the top of the fuseholder and pull out at the lower end, making sure it passes through the opening in the linkbreak lever. (See Figures 2 & 3.)

### ⚠ CAUTION

Do not remove or damage the small tube on the fuselink. It is an integral part of the fuselink and removal or damage may result in the cutout's failure to interrupt.

### ⚠ CAUTION

The equipment covered by this instruction guide should be selected, installed and serviced by competent personnel who understand proper safety procedures. This instruction guide is written for such personnel and is not a substitute for adequate training and experience in safety procedures regarding this type of equipment.

ANSI Standard C37.48 prescribes guidelines for application, operating and maintenance of distribution cutouts and shall be followed in addition to this instruction guide.

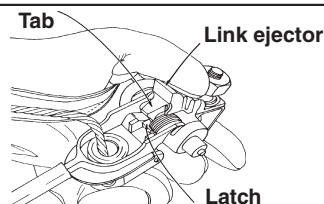


Figure 2

Replace the cap on the upper fuseholder ferrule and tighten with a wrench. Holding the fuseholder at the lower end, rotate the link ejector about its pivot until it stops, making certain that the tab on the link ejector engages the latch on the lower fuseholder ferrule. (See Figure 2.). Holding the ejector in this position, feed the cable over the link ejector channel and around the unthreaded portion at base of the stud in a clockwise direction to prevent strand breakage when nut is tightened. (See Figure 3.) Maintaining tension on the fuselink cable, tighten the fuselink attachment nut with a wrench. Clip excess fuselink cable.

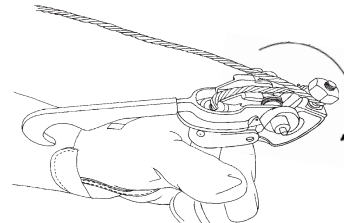


Figure 3

### ⚠ CAUTION

Do not use 100 amp or smaller fuselinks in 200 amp fuseholders by employing washers or other means. This could result in the cutout to fail to interrupt.

**NOTE:** Cutouts using an arc shortening rod require the use of removable buttonhead fuselinks. To attach the fuselink to the arc shortening rod, remove the screw-type buttonhead (and washer if equipped) from the fuselink. Screw the arc shortening rod (attached to cap) onto the fuselink and tighten firmly. (See Figure 4.) Follow same procedure as outlined in above paragraph.

### ⚠ CAUTION

Do not replace arc shortening rod with a standard cap. The rod is required to achieve the designated interrupting rating and use of the cutout without the rod will reduce the cutout's interrupting capability and may cause the cutout to fail to interrupt.

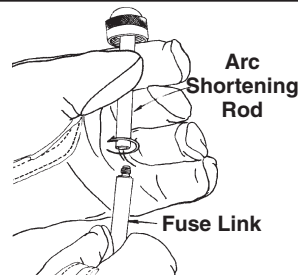


Figure 4



These instructions do not claim to cover all details or variations in equipment, nor to provide for all possible conditions to be met concerning installation, operation, or maintenance of this equipment. If further information is desired or if particular problems are encountered which are not sufficiently covered in this guide, contact A. B. Chance Company.

**NOTE:** Because Hubbell has a policy of continuous product improvement, we reserve the right to change design and specifications without notice.

**OPERATION**

**⚠ CAUTION**

Only qualified personnel should operate a cutout. Such personnel should wear appropriate protective equipment such as rubber gloves, hard hats, safety glasses, etc., in accordance with established utility and safety practices.

Once the fuselink has been installed in the fuseholder, insert the disconnect stick into the opening in the fuseholder trunnion and place the fuseholder into the hinge as shown in Figure 5 and remove the disconnect stick.

**⚠ WARNING**

Hot gases and high velocity particles are expelled from fuseholder during interruption. This expulsion can cause serious injury. Stay away from conical area below and in-line with fuseholder.

After positioning himself well clear from the vented end and exhaust path of the cutout, the operator should place the disconnect stick in the ring on the upper ferrule of the fuseholder and rotate the fuseholder to an intermediate position as in Figure 6. Then while looking away from the cutout, quickly and firmly drive the fuseholder into the closed position. Remove disconnect stick from the ring carefully to avoid opening the fuseholder.

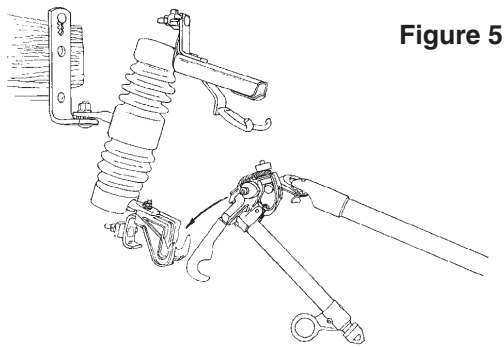


Figure 5

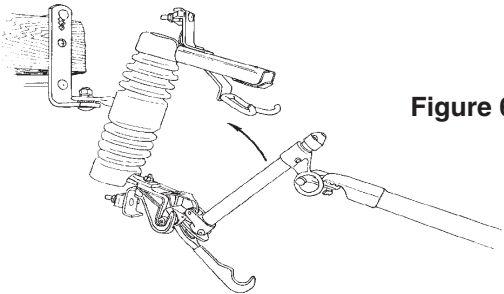


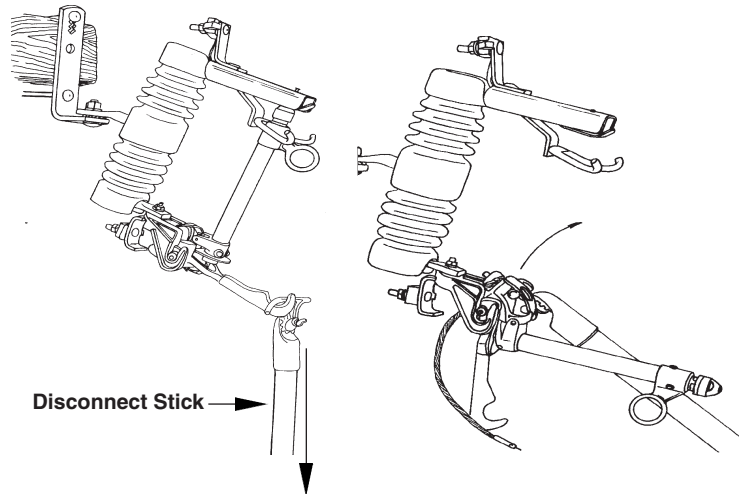
Figure 6

**⚠ WARNING**

Do not attempt to interrupt load current by pulling on the fuseholder ring to open the cutout. An arc started by opening a cutout under load in this manner could cause injury or damage to equipment.

All Type “C” **Linkbreak** Cutouts are equipped with a linkbreak lever to be used to interrupt load current. This can be accomplished by placing the disconnect stick in the recess on the linkbreak lever as shown in Figure 7A. Then after positioning himself below but well clear from the vented end and exhaust path of the cutout the operator should pull sharply down on the linkbreak lever without hesitation. This motion will break the fuselink within the fuseholder allowing the load current to be interrupted by the cutout. Once the fuselink has been broken and the fuseholder has fallen open, a disconnect stick may be used to remove the fuseholder from the hinge as in Figure 7B.

Chance Type “C” Linkbreak Cutouts are also equipped with “hooks” for use with a loadbreak tool. To open the fuseholder on the cutout use **only** an approved loadbreak tool designed for use with cutouts and follow the instructions provided with such tool.



Disconnect Stick →

Figure 7a

Figure 7b

**⚠ CAUTION**

Do not leave a fuseholder in an open position for a prolonged period of time. Excessive water entering the bore can cause damage to the fuseholder liner causing it to swell and thus possibly causing the cutout to fail to interrupt.

**MAINTENANCE**

Refer to ANSI Standard C37.48 as a general guide. Periodically inspect the fuselink at the lower open end of the fuseholder for evidence of corrosion. Replace fuselinks which show signs of deterioration (broken strands, heavy corrosion, etc.) as the deterioration may cause breakage at this point when using the linkbreak function resulting in failure of the cutout to interrupt load current. Replace broken or cracked por-

celain and clean or replace if heavily contaminated. Inspect contacts for excessive pitting or burning and replace as necessary. Check the fuseholder liner for cracking or excessive erosion. If cracked or if the I.D. is larger than .650 inches and .860 inches on the 100 and 200 amp fuseholders respectively, then replace the fuseholders. If the fuseholder shows any signs of electrical tracking it should be replaced.

NOTE: Because Hubbell has a policy of continuous product improvement, we reserve the right to change design and specifications without notice.



©1999 Hubbell/Chance, 210 N. Allen St., Centralia, MO 65240 USA

Printed in USA