

M-2001D Tapchanger Control Quick Start Guide



LCD SCREEN Pressing any pushbutton will wake up the LCD and display the heading corresponding to the "Hot Button" label inside the pushbutton - WAKE, MNTR, SETP, CNFG, COMM, UTIL, or VR.

EXIT/WAKE Pushbutton The EXIT WAKE Pushbutton wakes the LCD from sleep mode and begins scrolling through a list of user programmed metered/calculated values.

While navigating through the different HMI menus the **EXIT** pushbutton is used to:

- Exit a level to the next higher level
- Cancel data entry
- Clear the screen when at the header level

VR Pushbutton Activates the user defined Voltage Reduction Steps.

Shortcuts/Arrows

SETP Access to the Setpoints Screens.

MNTR Access to the Monitoring Screens.

ENT/UTL Pushbutton Access to the Utilities screens and ENTER button.

While navigating through the different HMI menus the ENT pushbutton is used to:

- Enter the edit mode of a screen
- Store a setpoint or condition in memory
- Enter the sub heading data level
- Reset certain monitoring screens

CNFG Access to the Configuration Screens.

COMM Access to the Communication Screens.

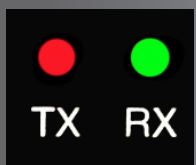
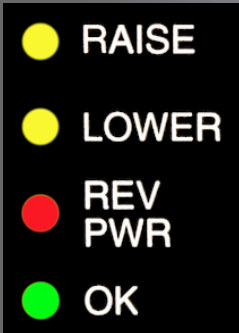
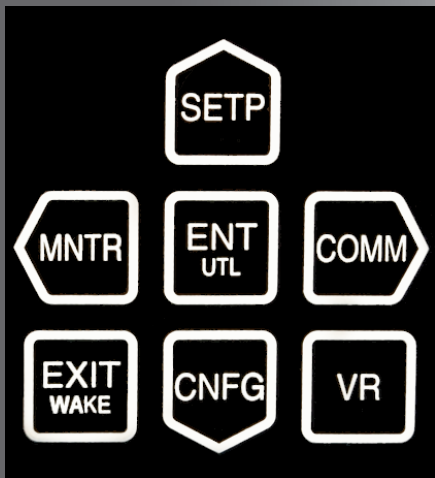
RAISE LED Out of Band Low Voltage.

LOWER LED Out of Band High Voltage.

REV PWR LED Indicates reverse power flow.

OK LED Illuminates to indicate the micro controller is functioning properly and is extinguished when a Motor Seal-in Failure Block is in effect.

COM1 TX/RX LEDS Indicates when control is transmitting and/or receiving data.



Scan this QR Code for direct access to product software and support documents.



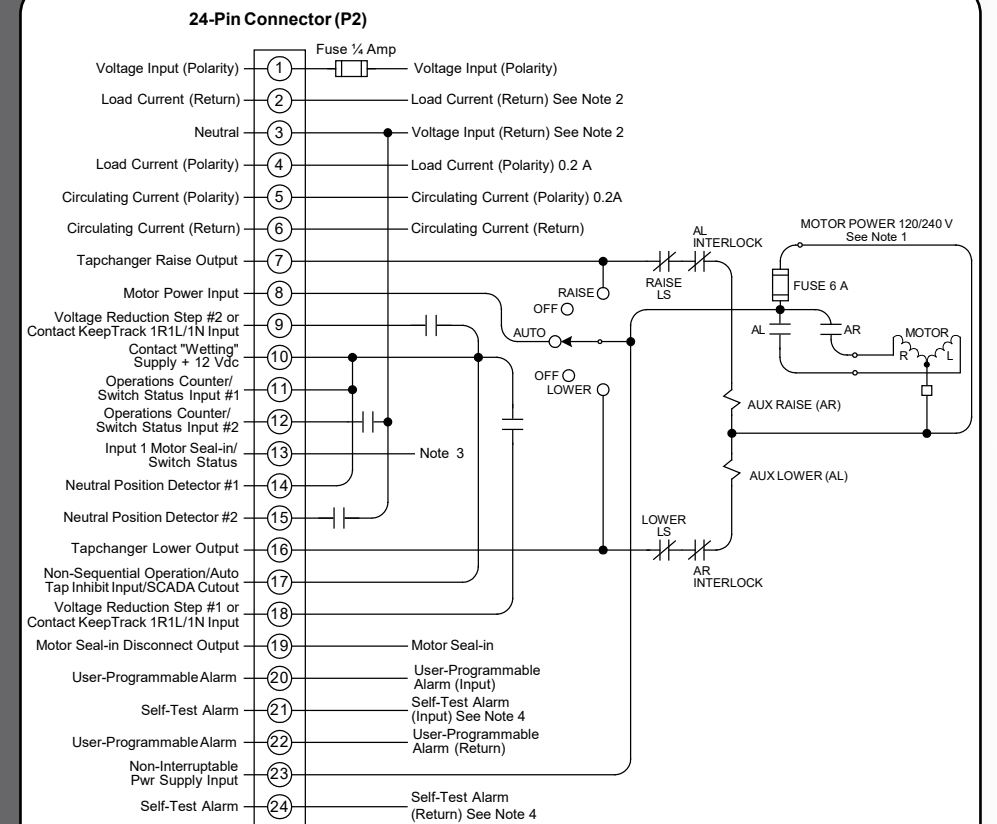
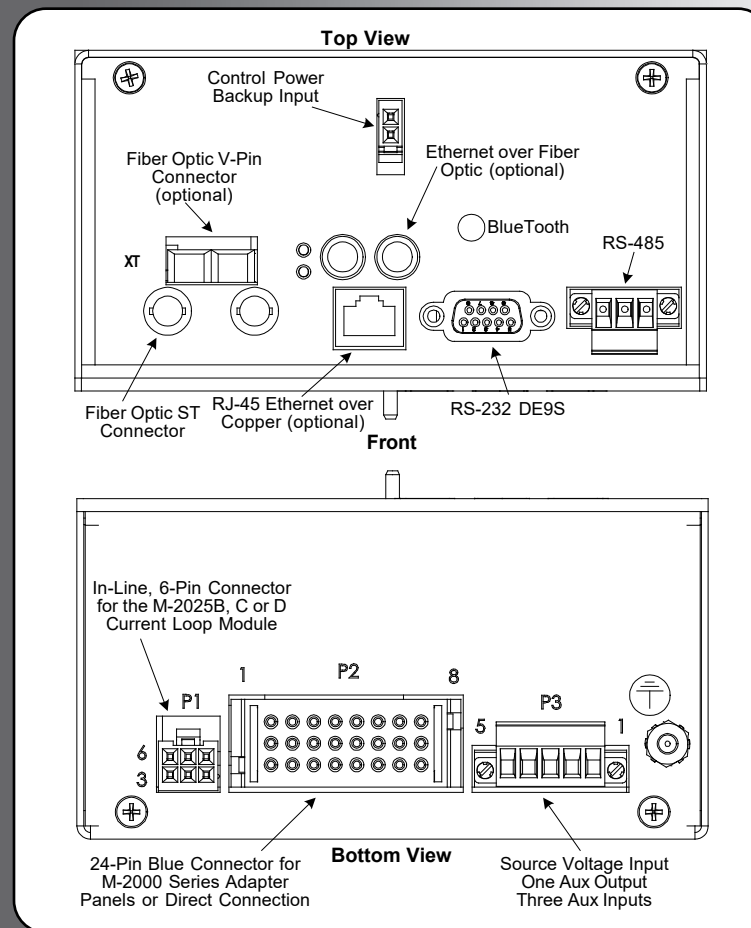
ALARM LED Indicates any of the programmable alarms are activated.

V/RED LED Indicates voltage reduction has been invoked.

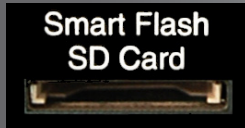
- Continuous illumination and *one* periodic flash indicates Level 1 Voltage Reduction.
- Continuous illumination and *two* periodic flashes indicates Level 2 Voltage Reduction.
- Continuous illumination and *three* periodic flashes indicates Level 3 Voltage Reduction.

MANUAL LED Indicates automatic control is disabled and in manual mode.

LOCAL LED Indicates control is switched into Local mode. Cannot command control to raise or lower via SCADA.



USB Port Used for Direct TapTalk® Communications Connection.



Smart FlashCard Slot Used for loading and saving setpoints, saving Datalog files, SOE files, OSC files, Clone save and load, load and save DNP files, Firmware Update, save Wake-up Screens, save ALL Metering Parameters and can be utilized as an Access Code Key.

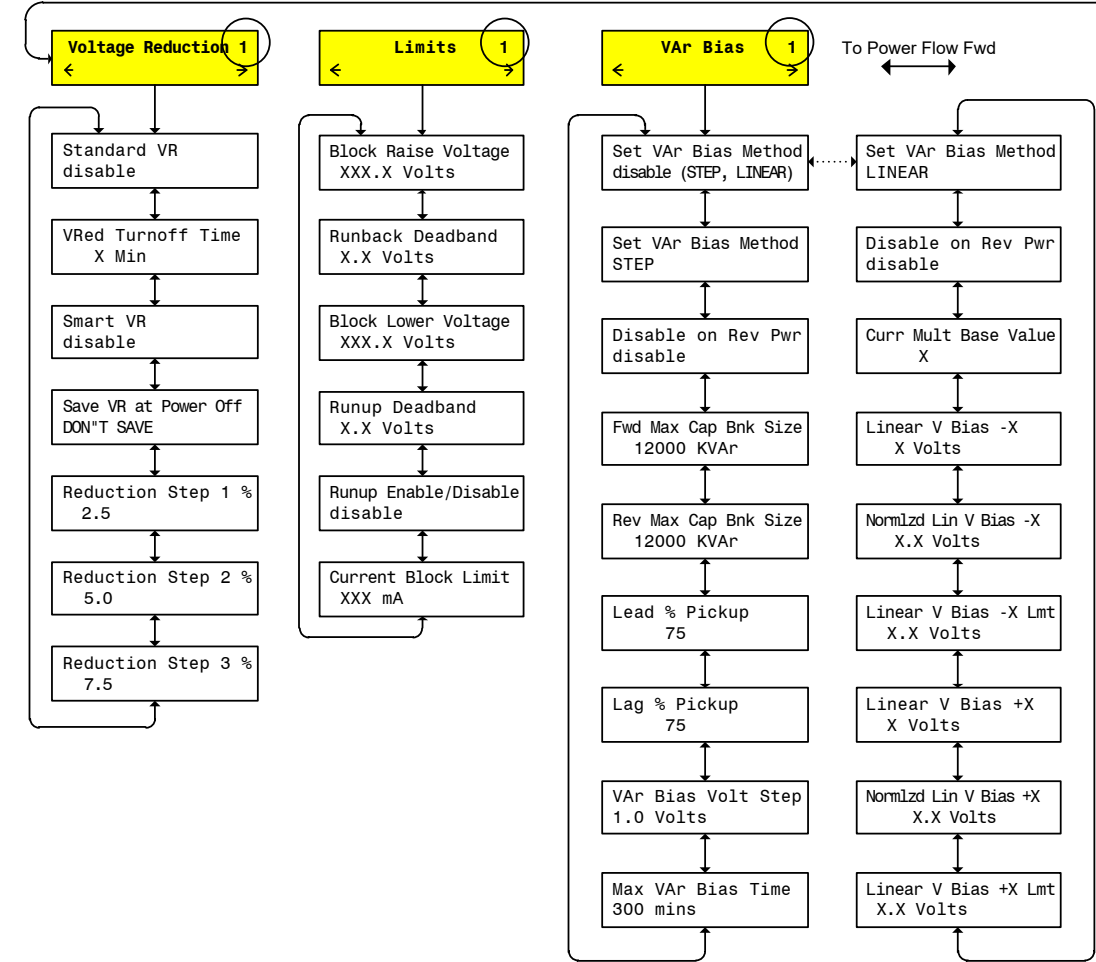
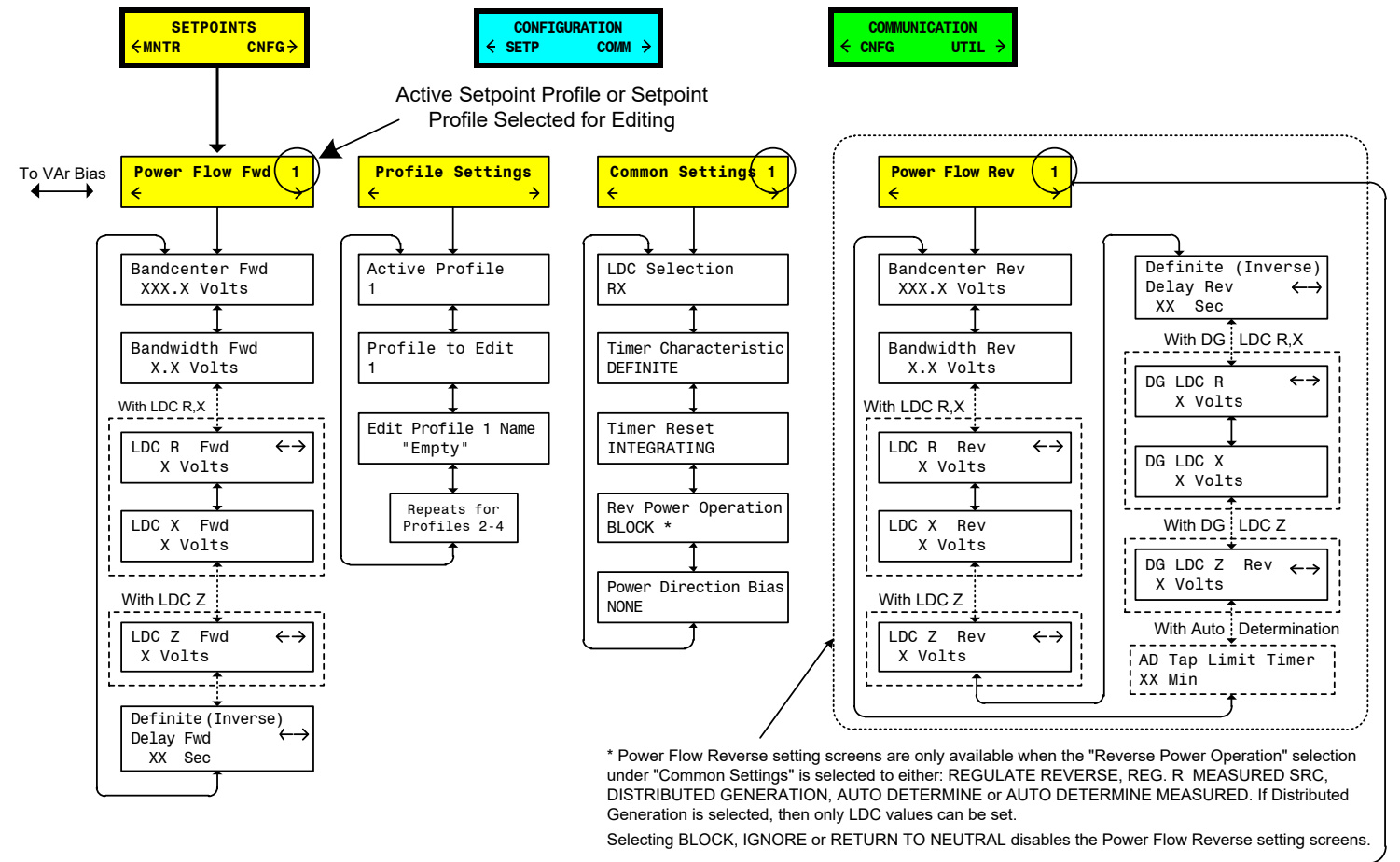
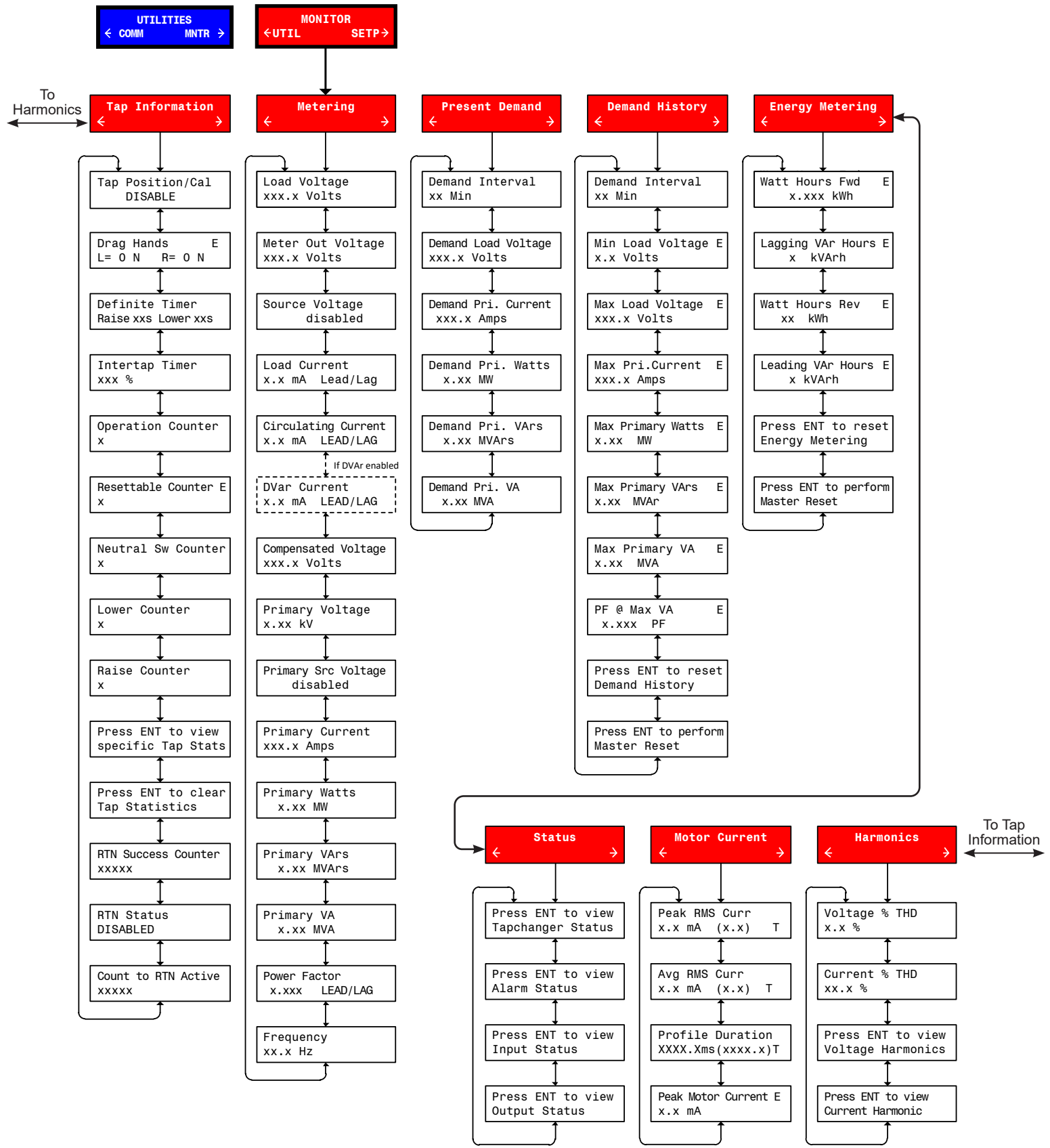
⚠ Death or severe electrical shock can occur.
WARNING: In no case should the line current circuit be interrupted with the regulator or transformer energized. Do not remove auxiliary current transformers without shorting the current inputs.

⚠ Exercise care during installation, operation and maintenance procedures
 The equipment described in this manual contains voltages high enough to cause serious injury or death. Only qualified personnel should install, operate, test, and maintain this equipment. Be sure that all personnel safety procedures are carefully followed. Exercise due care when operating or servicing alone.

⚠ WARNING:
Remove Fuses Before Service.



HUBBELL A proud member of the Hubbell family.



At any menu screen:
 Press EXIT to go to the Menu Header.
 Press either < -> to move sideways to the adjacent Menu Header.

