

Pole Step Installation Instructions for Metal Poles only:

Chance® Bolt/Plate Assembly, Catalog No. T205-0425 & T205-0433

1. Install 1/2-13 RIVNUT® in steel pole at detachable pole step location per RIVNUT® instructions.

WARNING

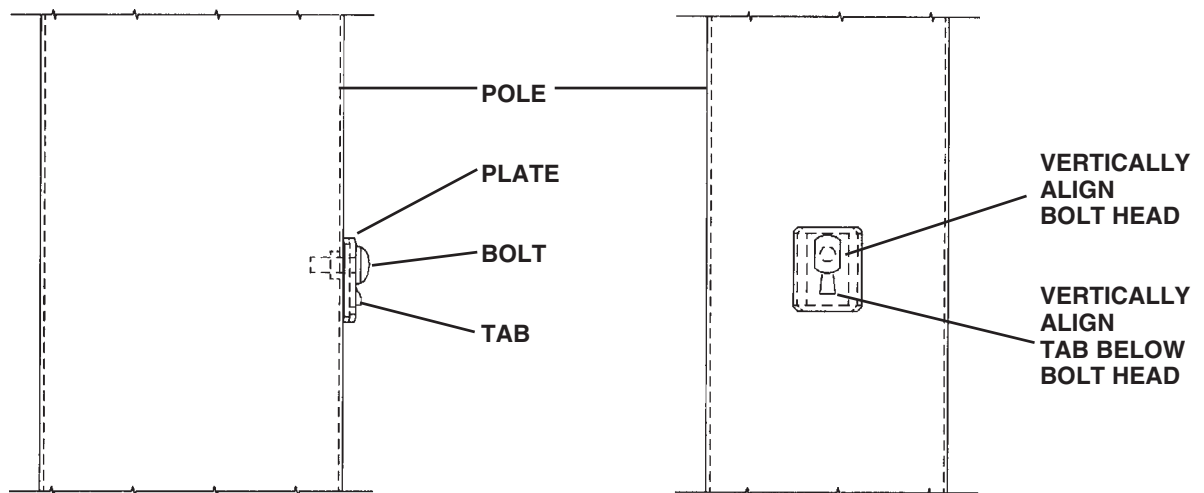


CLIMBING HAZARD

CAN CAUSE PERSONAL INJURY OR DEATH

- Use only 1/2-13 RIVNUT® recommended for metal wall thickness. **DO NOT SUBSTITUTE.**
- Install RIVNUT® securely per RIVNUT® instructions.

2. Place plate at RIVNUT® with tab down as shown in drawing below: Tighten bolt in RIVNUT® until plate is held firmly against pole, aligning bolt head vertically as shown in drawing below.



WARNING



CLIMBING HAZARD

CAN CAUSE PERSONAL INJURY OR DEATH

- Use only Chance® Pole Step Bolt and Plate Assembly. **DO NOT SUBSTITUTE.**
- Align bolt head vertically by continuing to tighten bolt. **DO NOT LOOSEN BOLT.**
- Be sure bolt head and plate tab are vertically aligned.

These instructions do not claim to cover all details or variations in equipment, nor to provide for all possible conditions to be met with concerning installation, operation, or maintenance of this equipment. If further information is desired or if particular problems are encountered which are not sufficiently covered in this guide, contact A.B. Chance Company.



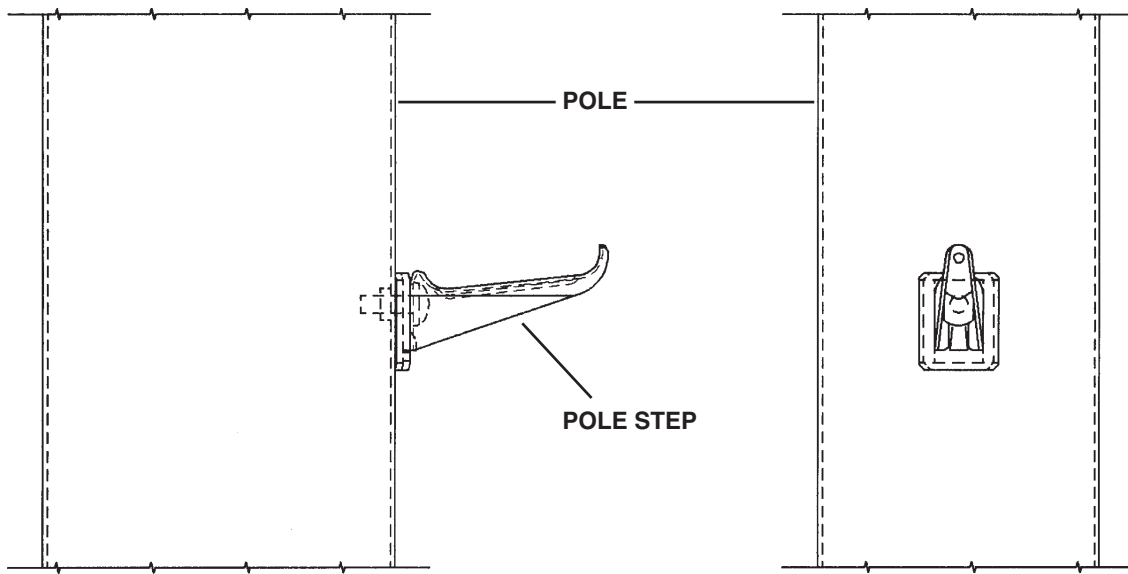
CHANCE®

NOTE: Because Hubbell has a policy of continuous product improvement, we reserve the right to change design and specifications without notice.

Pole Step Installation Instructions for Metal Poles only:

Chance® Detachable Pole Step Assembly, Catalog No. T205-0426

3. After making sure plate and bolt are properly installed, slip pole step between bolt head and plate making sure the step is fully engaged behind bolt head and straddles plate tab as shown in drawing below. NOTE: In a proper installation, the bolt head holds the step securely and the tab stabilizes the pole step by preventing rotation.



WARNING



CLIMBING HAZARD

CAN CAUSE PERSONAL INJURY OR DEATH

- Clear all ice and debris and fully engage pole step before climbing.
- Avoid dislodging pole step when climbing or using lift lines.
- Be observant for loose or dislodged pole steps.
- Remove lower pole steps when not in use to avoid unauthorized climbing.
- Use Chance Pole Step Bolt/Plate Assembly only on metal poles.