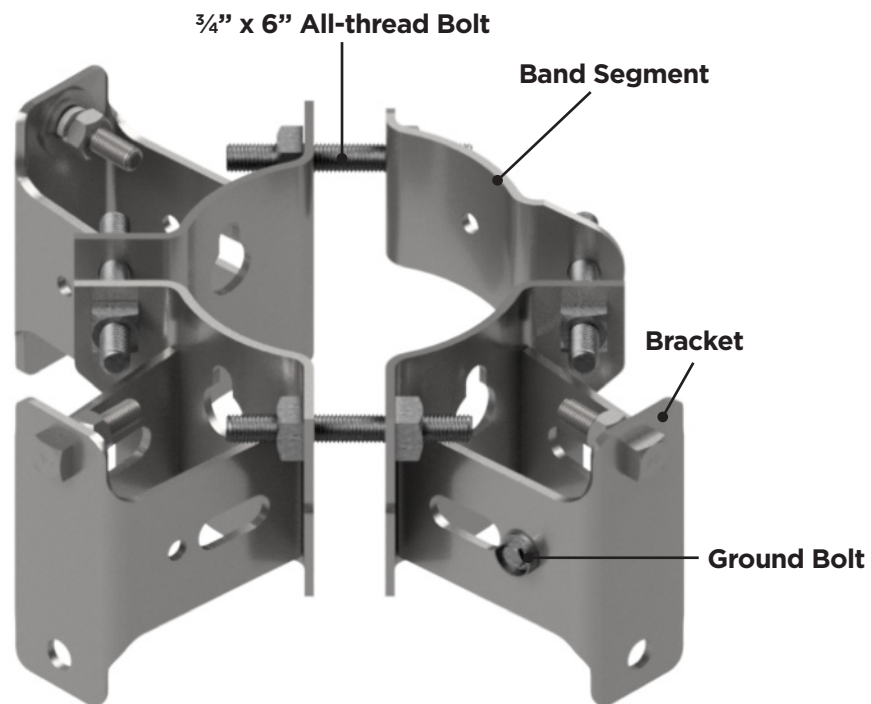
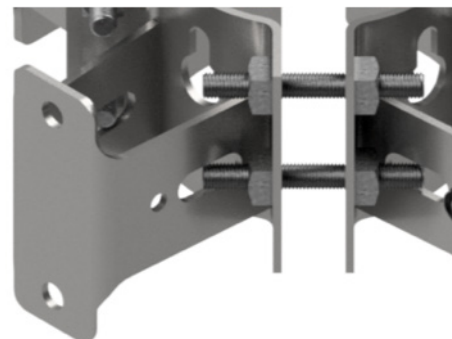


STEEL BANDED TRANSFORMER BRACKET MOUNTING INSTRUCTIONS

Assemble cluster mount and pre-set brackets to approximate pole diameter size by adjusting the all-thread bolts. Leave the band segment loose on one side so that the mount can be wrapped around the pole. For ease of handling, a lag screw or nail can be driven into the pole at the mounting location and the cluster hung on this lag or nail. If two band units are to be installed, a second lag screw 18" down will give the proper spacing on the units.



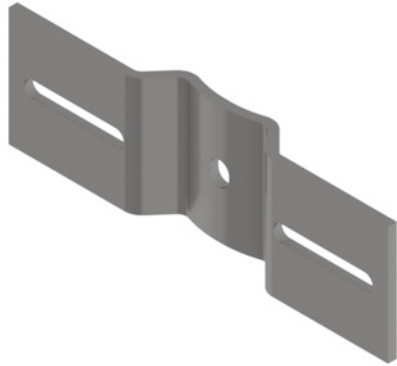
**5/8" x 1 3/4" or 3/4" x 1 3/4"
Machine Bolt**



"HD" Series Brackets



STEEL BANDED TRANSFORMER BRACKET MOUNTING INSTRUCTIONS



**Horizontal Adapter Plate (5" x 16")
C2120012**



**Vertical Adapter Plate (3" x 14")
C2110009**

Standard Mounts: Catalog numbers are designed for 6" to 10-1/2" pole diameters. Brackets extend 6" from pole.

Modifications to standard catalog numbers:

Catalog Number	Band Segment	Bracket	Vertical Plate	Horizontal Plate	5/8 x 1 3/4" Bolt	3/4 x 1 3/4" Bolt	3/4 x 6" Bolt	Ground Bolt
115	3	1	1		4		4	1
215	2	2	2		8		4	1
315	1	3	3		12		4	1
HD315	1	3	3		12		8	1
PS150	6	2			2	2	8	1
PS250	4	4			4	4	8	1
350	2	6			6	6	8	1
HD350	2	6			6	6	16	1
3100	2	6		6	6	6	8	2
HD3100	2	6		6	6	6	16	2
5150	3	1			1	1	4	1
5250	2	2			2	2	4	1
5350	1	3			3	3	4	1
HD5350	1	3			3	3	8	1

Note: Prefix "HD" indicates heavy duty mount with doubled band bolts (example: HD350)

These instructions do not purport to cover all details or variations in equipment nor to provide for every possible contingency to be met in connection with installation, operation or maintenance. Should further information be desired or should particular problems arise which are not covered sufficiently for the purchaser's purposes, the matter should be referred to Hubbell Power Systems, Inc.

