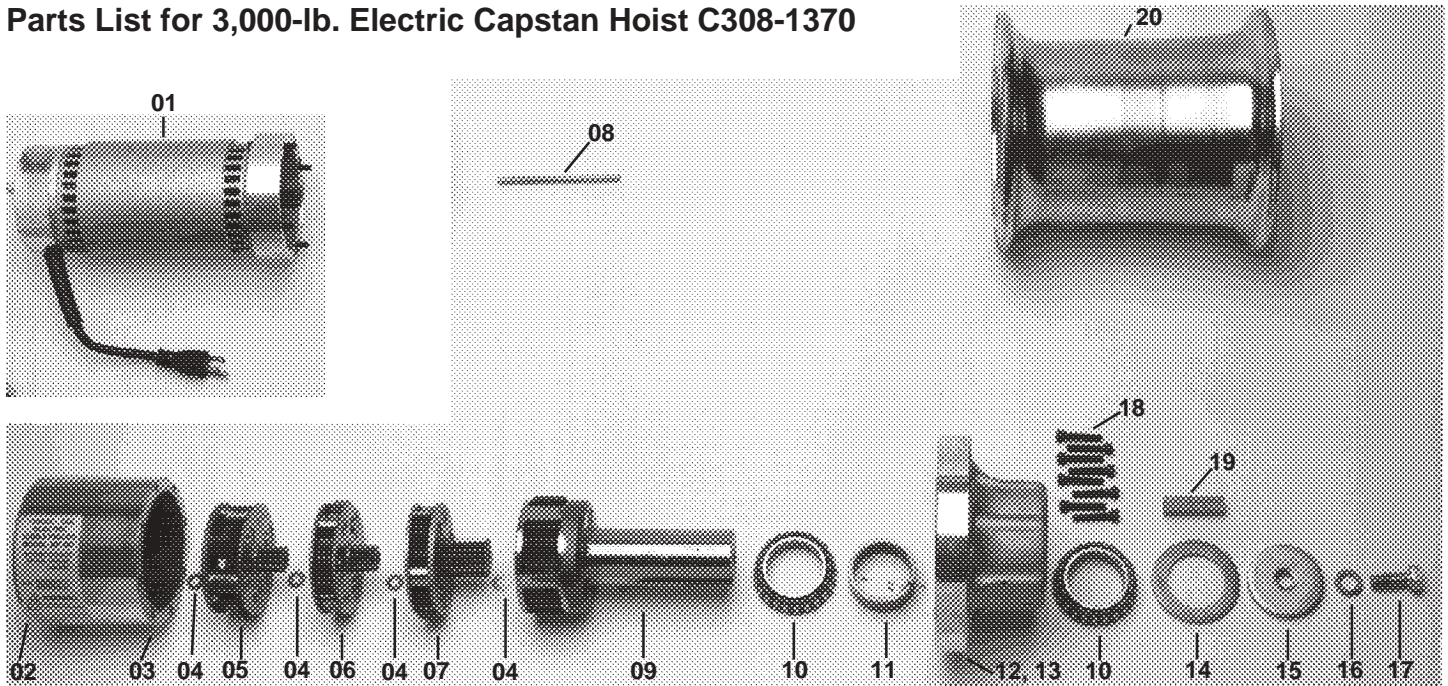


Parts List for 3,000-lb. Electric Capstan Hoist C308-1370



Item No.	Description	Part No.	Quantity Required	
			C308-1370 (115V)	C308-1371 (230V)
01	Motor Ass'y Complete (115 VAC)	T308-0868	1	—
	Motor Ass'y Complete (230 VAC)	T308-0869	—	1
01a	Cord, Motor	P308-0047	1	1
01b	End Cap	P308-0699	1	1
01c	Rectifier Bridge (not shown)	P308-0462	1	1
01d	Armature only (115V) (not shown)	P308-0721	1	—
	Armature only (230V) (not shown)	P308-0767	—	1
01e	Housing w/Magnets	P308-0722	1	1
01f	Brush End Housing	P308-0723	1	1
01g	Bearing, Brushend (not shown)	P308-0724	1	1
01h	Brush Plate Ass'y (not shown) (115V)	P308-0725	1	—
	Brush Plate Ass'y (not shown) (230V)	P308-0882	—	1
01i	Brush (not shown) (115V)	P308-0726	2	—
	Brush (not shown) (230V)	P308-0883	—	2
01j	Spring, Brush (not shown)	P308-0727	2	2
01k	Preload Spring, Armature (not shown)	P308-0728	1	1
02	Label 115 VAC	P308-0828	1	—
	Label 230 VAC	P308-0843	—	1
03	Ring Gear	P308-1301	1	1
04	Thrust Washer	P308-1029	4	4
05	Carrier Ass'y 1st	E308-1413	1	1
06	Carrier Ass'y 2nd	E308-1409	1	1
07	Carrier Ass'y 3rd	E308-1408	1	1
08	Pin	P308-1222	1	1
09	Shaft, Output Ass'y	E308-1406	1	1
10	Bearing	P316-0299	2	2
11	Spacer, Bearing	P308-1023	1	1
12	Housing, Output	P308-1015	1	1
13	Race, Bearing (In Housing - not shown)	P316-0300	2	2
14	Seal, Nilos	P316-0298	1	1
15	Washer 2 ³ / ₈ " Dia.	P308-0287	1	1
16	Lockwasher, 1/2"	P001-0994	1	1
17	Bolt, 1/2" x 1 1/4" GR5	P001-1521	1	1
18	Screw, Socket Head 1/4" x 1 1/2"	P001-1542	8	8
19	Key	P308-1156	1	1
20	Capstan Drum	E308-1362	1	1
21	Grease, Gear	S12106	4 oz.	4 oz.