

10 INCH FIRE-RATED POKE-THROUGH (FRPT) SERVICE FITTING AND ABANDONMENT PLATE

GENERAL INFORMATION

Factory assembled S1R10xxx series service fittings -For use in a 1, 1-1/2 & 2 hour rated unprotected reinforced concrete floor or floors employing steel form units and concrete topping (D900-series designs[US], F900-series designs [Canada]), or concrete floors with suspended ceilings. (Fire resistance designs with suspended ceilings should have provisions for accessibility in the ceiling area below the poke through fittings.)

The assembled FRPT device and fitting will not reduce the ratings of the floor assembly when the thickness and type of concrete (required for a specific rating) are within the specified limits and the device is installed as specified.

1. CONCRETE - Minimum thickness of structural concrete topping of 2 ¼ inch over metal deck or a minimum of 3 inch thick reinforced concrete slab. Unit weight of concrete to be 113 to 155 pounds per cubic foot.

2. INSTALLATION - Mounted in a 10 inch diameter drilled hole or a formed 10 inch diameter hole using Hubbell Pre-Pour Tube S1R10PPT, purchased separately.

3. SPACING - Minimum of 2 feet on-centers (OC) and not more than one unit per 65 square feet of floor area in each span.

4. RECESSED COVERS - Maximum allowable cross-sectional area of copper for power circuits, data/AV, and/or telephone cables that may be fed through each of the perimeter sides of the service fitting is 0.0408 sq. in. Maximum allowable cross-sectional area of copper for power circuits, data/AV, and/or telephone cables that may be fed through the center of the service fitting is 0.0978 sq. in.

5. FURNITURE FEED COVERS - Maximum allowable cross-sectional area of copper for power circuits, data/AV, and/or telephone cables that may be fed through each of the 1" opening side of the service fitting is 0.1304 sq. in. Maximum allowable cross-sectional area of copper for power circuits, data/AV, and/or telephone cables that may be fed through the center opening of the service fitting is 0.1924 sq. in.

- **CAUTION: RISK OF ELECTRICAL SHOCK.** Disconnect power before installing. Never wire energized electrical components.
- **NOTICE:** For installation by a qualified electrician in accordance with all national and local electrical codes, communications standards, the following instructions and any instructions included with individual devices.
- **NOTICE:** For indoor use only.
- **NOTICE:** In accordance with the NEC® and CE Code, data communications must be separated from power circuits.
- **NOTICE:** Device type and rating must be suitable for the application.
- **CAUTION: USE COPPER CONDUCTORS ONLY.**
- Select conductors having 90°C or higher rated insulation and sufficient ampacity in accordance with the NEC® or CE Code.
- **NOTICE:** Not intended to be used in high traffic installations and not intended to support furniture.
- **CAUTION:** For Furniture Feed cover applications - liquid tight conduits are required for power and data/AV wires and cables to maintain fire classification.

Hubbell Incorporated (Delaware)
Shelton, CT 06484
1-800-288-6000
www.hubbell-wiring.com

PD2814

06/18



FINISHED CONCRETE / CARPET / EXISTING TILE / TERRAZZO FLOOR ASSEMBLY INSTALLATIONS

1. Core drill a 10.00"–10.12" diameter hole through the concrete floor.

2. FOR CARPETED FLOORS ONLY: Cut a 10.50" – 10.75" diameter hole into the carpet.

3. FOR NEW TILE FLOORS ONLY: Install tiles after coring hole. Installer must make top surface of tiles and flange flush. Seal entire periphery of the flange with grout.

4. Install bottom feed fittings S1R10CBFxxx series and S1R10PBFxxx series per instructions. Bottom feed fittings are purchased separately.
Note: To maintain fire classification, all bottom openings to be covered completely with bottom feed fittings, pass thru plates or blank plates.

5. Insert service fitting, S1R10PTFIT series, into cored hole. Press down onto installation plate (A) until brackets (B) in Fig. 1 sit flush against the floor. On smaller diameter core drilled holes some shearing of the flexible intumescent gasket material (C) may occur.

6. For power applications, attach conduit to bottom feed fittings S1R10CBFxxx series and/or S1R10PBFxxx series per all code requirements. Pass thru bottom feed plates are to be used for data/AV that does not require to be attached to conduit. Make all wiring and conduit connections in accordance with applicable codes.

7. For cover plates S1R10CSPxxx series and S1R10PSPxxx series remove the installation plate (A), installation tubes (D) and retain the screws (E) Fig. 2. Cover plates are purchased separately.

8. Install data/AV and/or power cover plates and associated components into service fitting. Assemble cover plates per the included instructions.

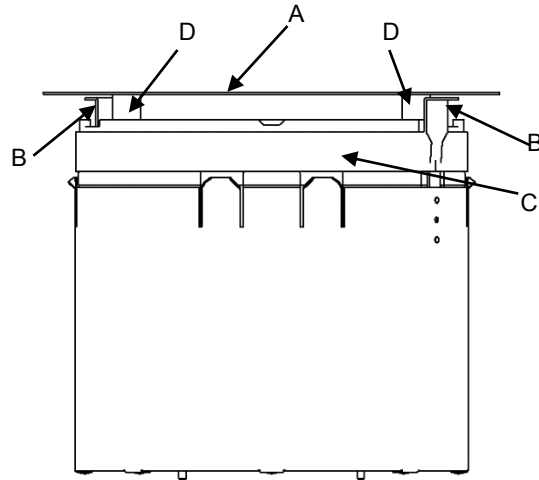


Fig. 1

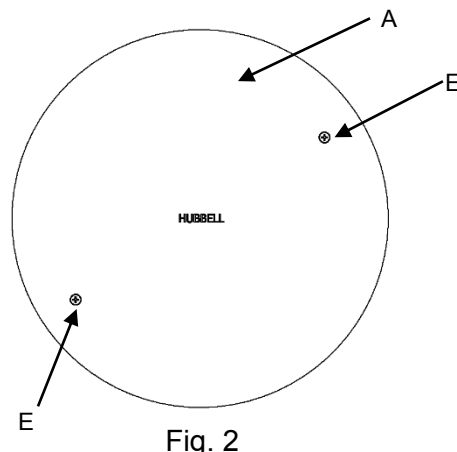


Fig. 2

INTUMESCENT DIVIDER - Catalog No.: S1R10INTUMDIV

In the event the intumescent divider(s) (H), provided with fitting, need to be replaced, it can be purchased separately. Remove any cover plates that may be installed. Remove and retain the screws (G) and bracket(s) (F) noting the orientation, Fig. 3. Remove the intumescent divider(s) (H). **CAUTION: To maintain fire classification, both intumescent dividers (H) must be installed.** For installation, note the intumescent divider (H) orientation, Fig. 4. Install bracket(s) (F) with the screws (G) and torque to 8-12 in-lbs (0,9-1,4 Nm). Note the orientation of brackets (F) in Fig. 3.

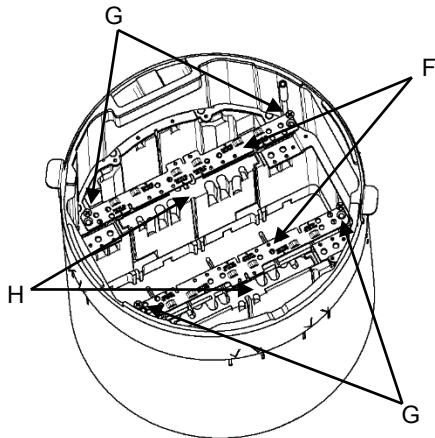


Fig. 3

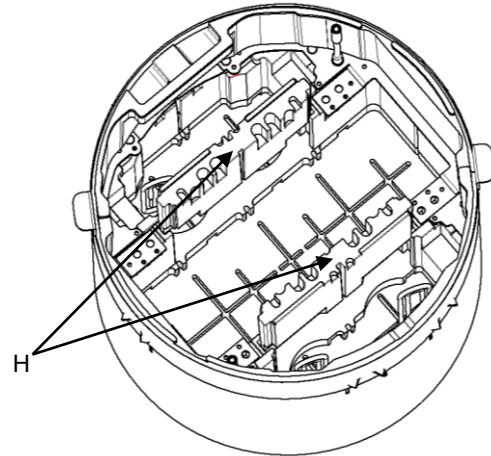


Fig. 4

ABANDONMENT PLATE INSTALLATION INSTRUCTIONS

(Purchased separately):

S1R10ADMTxxx series abandonment plate (K) provides an approved method of abandoning the Hubbell S1R10PTxxx series fire rated poke through. This product will maintain the fire classification of the poke through installation.

1. Disconnect power and/or data/AV if accessing the wiring chamber.
2. Remove screws (J) and cover from can assembly (I). See Fig. 5.
3. Install abandonment plate (K) Fig. 6. Coat screws with electrical type of RTV silicone sealant to ensure water tightness before installing. Torque screws (J) to 4-6 in-lbs (0,5-0,7 Nm). Apply a ¼ [6,4mm] thick continuous bead of electrical type of RTV silicone sealant fully around the perimeter on the underside of the abandonment plate to ensure water tightness.

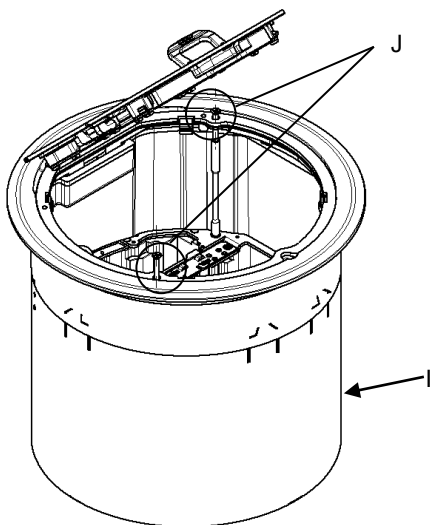


Fig. 5

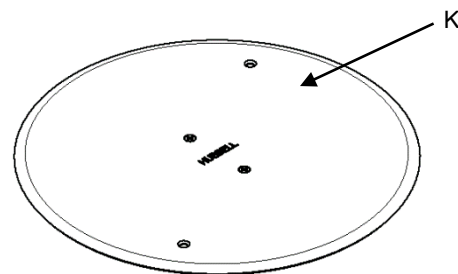


Fig. 6