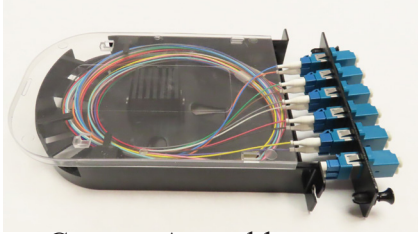




Instructions apply to the following catalogs:

- OCSPLCD6M4 OCSPLCQ24S2
- OCSPLCD6S2 OCSPCSD6M4
- OCSPLCD12M4 OCSPCSD6S2
- OCSPLCD12S2 OCSPCA6S2
- OCSPLCQ24M4 OCSPCSD12M4
- OCSPCSD12S2

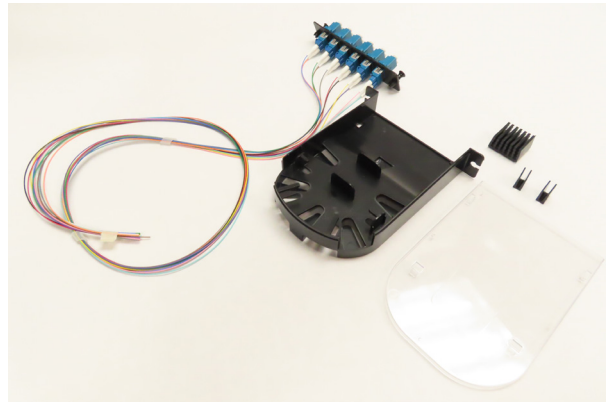


Cassette Assembly



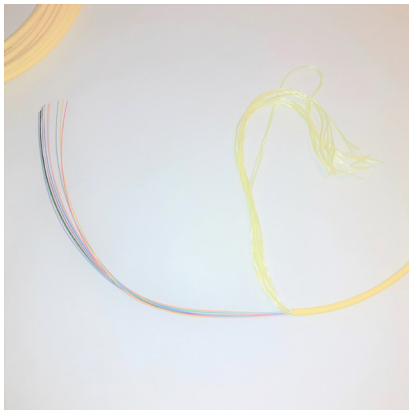
Accessory Pack,
Contents vary
based on cassette
configuration.

1



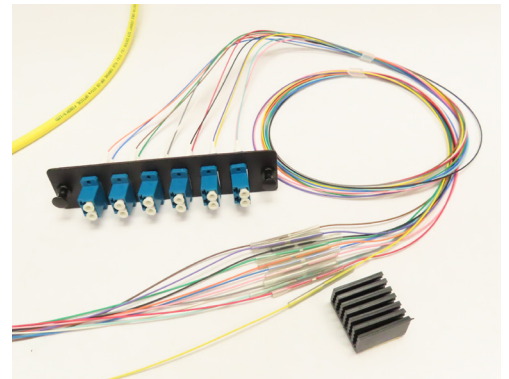
Remove cover and contents from cassette. Disconnect fiber connector panel by releasing push pins.

2



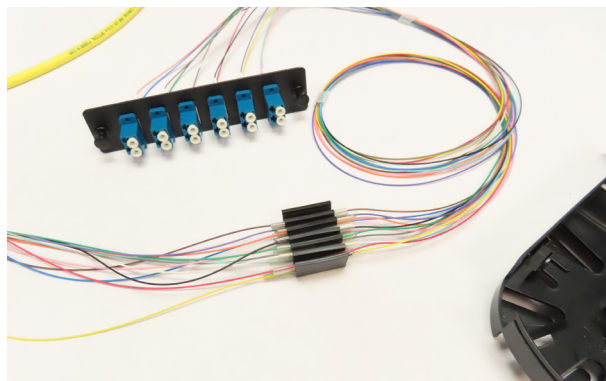
Cassettes are front loading. Route enough distribution cable through the rear of the enclosure to comfortably splice the fibers. Remove 14" to 16" of jacket from fiber distribution cable. Trim kevlar to jacket.

3

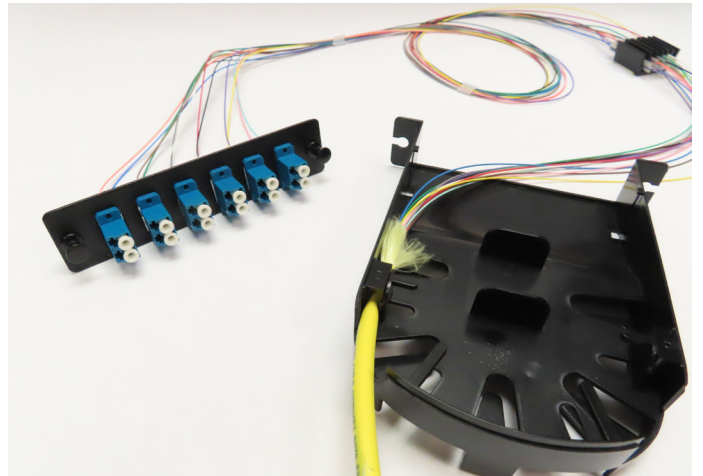
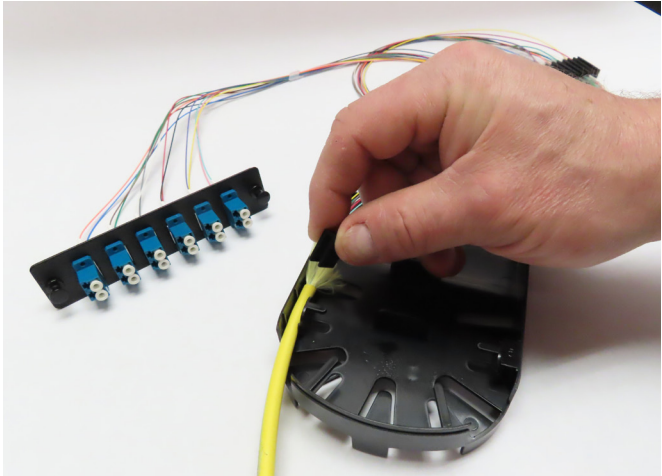


Fusion splice the pig tails to the distribution cable fibers and install the provided splice sleeves to support the splice.

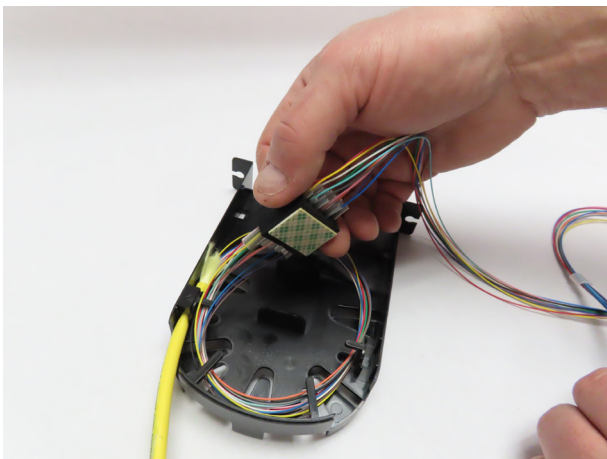
4



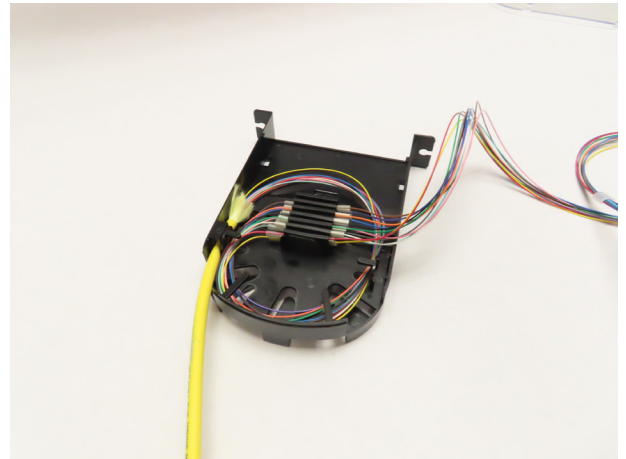
Load the spliced fibers into the splice holder.
Up to four splices per slot.



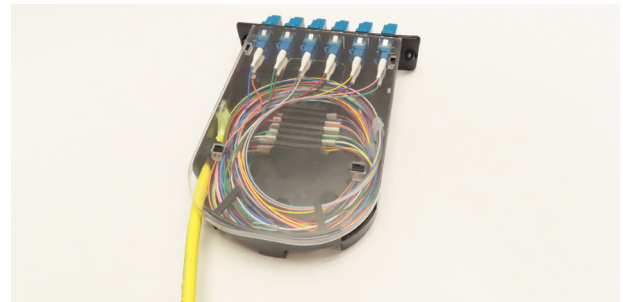
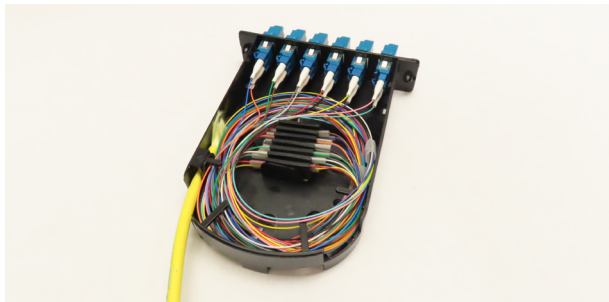
Load the distribution cable into the retainer slot and install the strain relief clip. The clip must be fully seated in the slot.



Coil the distribution cable fibers into the cassette. Perform a trial run before removing the adhesive liner from the splice holder.



Remove the adhesive liner from the splice holder and attach it to the cassette.



Neatly coil the pig tail fibers into the cassette. Ensure no fibers are located above the management tabs. Reattach the connector panel to the cassette with push pins. Install cover. Route and secure distribution cable to the enclosure per the enclosure instructions.