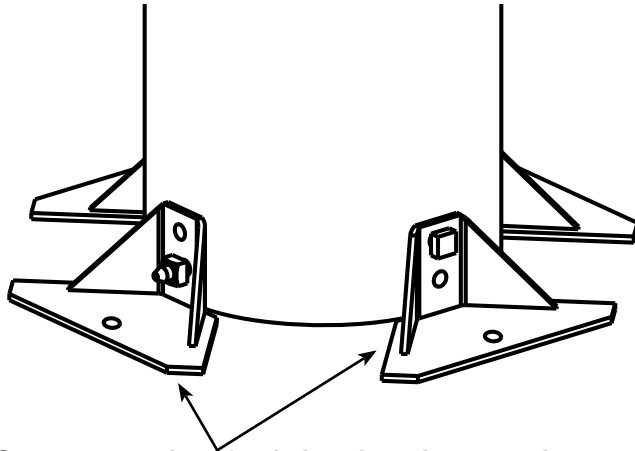


POLE BEARING PLATES

Not sold in pairs, each pole bearing plate is made of $\frac{3}{8}$ "-thick steel plate per ASTM A36 and hot-dip galvanized per ASTM A153.



One or two pairs of pole bearing plates can be used. Note how each pair mounts with one bolt through upper or lower locating hole.

Bolts and lag screws are not included. Order separately from Catalog Section 5.

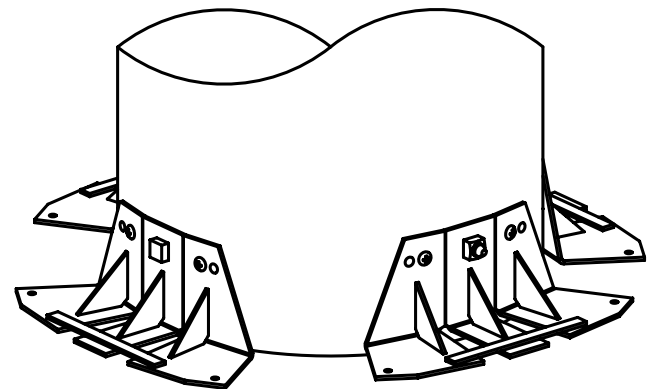
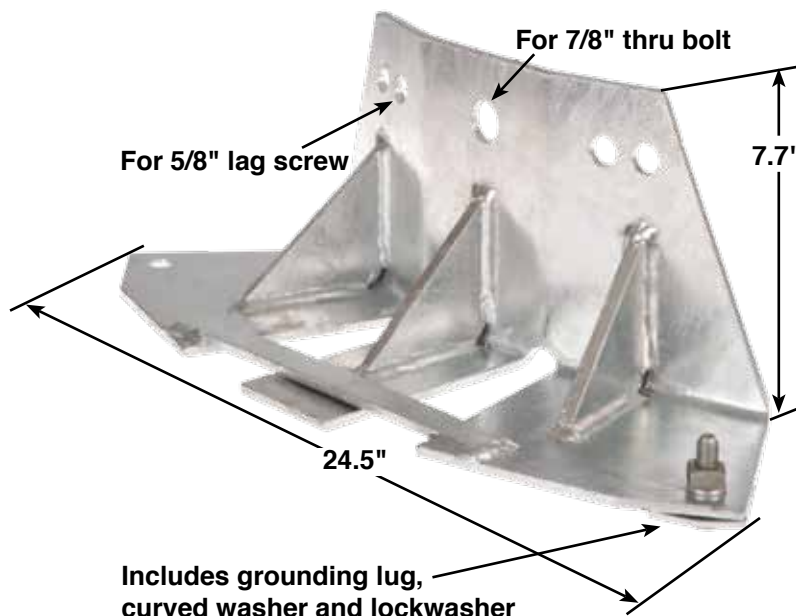
POLE BEARING PLATE
Catalog No. C1100926
Sold as a single unit, not in pairs.



One pair of these plates adds 180 square inches of bearing area to that of a pole bottom. Two pairs add 360 square inches.

LARGE POLE BEARING PLATE

One pair of these plates adds 245 square inches of bearing area to that of a pole bottom. Two pairs add 490 square inches.



One or two pairs of pole bearing plates can be used.

Plate only Catalog No. C1100954

Kits also are available.

To order multiple units and/or include $\frac{7}{8}$ " bolts and/or $\frac{5}{8}$ " lag screws, select suffixes and add to the basic Catalog No. as shown below.

C1100954216H

- H = Two $\frac{5}{8}$ " x $4\frac{1}{2}$ " lag screws per plate
- One $\frac{7}{8}$ " bolt per plate (specify length in inches: 16, 18, 20, 22, 24, 26, 28 or 30)
- Plates quantity (specify only 2 or 4)

NOTE: Because Hubbell has a policy of continuous product improvement, we reserve the right to change design and specifications without notice.



210 N. Allen St. • Centralia, MO 65240

©Copyright 2011 & 2012 Hubbell Incorporated

Printed in USA

RGS 2M 1/11