

INSTALLATION INSTRUCTIONS FOR RACO® Cat. #'s 294, 294-1, 294XL

2-1/8" Deep ceiling box, 22.3 Cubic Inch Capacity

New Work Maximum Support: Fan – 70 lbs., Fixture – 150 lbs.

Old Work Maximum Support: Fan – 70 lbs., Fixture – 70 lbs.

U.S. Patent 7,148,420 & other Patent Pending

For use with new and old construction applications.

Mounts on side of joists.

Includes mounting holes for fan or fixture.

Use disposable steel protection cover for mudding / painting operation.

Cover will protect wiring while router is used to cut drywall.

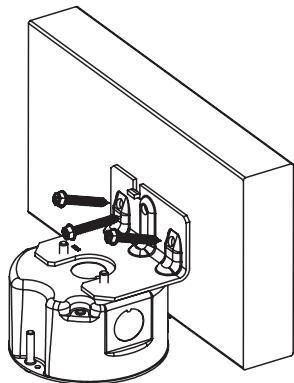
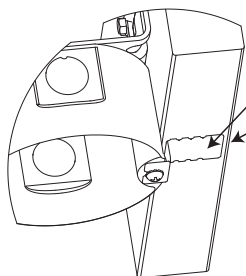
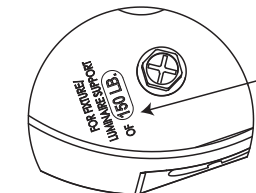
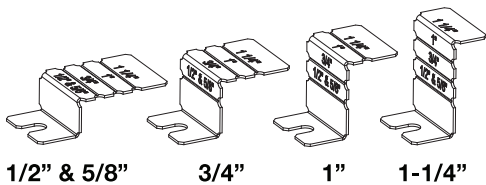
NM connector slides up cable and snaps into knockout from inside box - perfect for old work. Maximum NM cable is 10-3 with ground.

Use ONLY RACO® supplied screws to mount fan.

Included:

Steel Box, Disposable Steel Protection Cover, Mounting Bracket, 2 x #12-24 (Grade 5) mounting bracket screws, 2 x #10-32 (Grade 5) Fan mounting screws, 3 x wood screws, 1 x ground screw, 1 x nonmetallic cable connector, and 1 x set-back tab.

Installation Instructions: New Construction



- Bend set-back tab for drywall thickness as shown.
- Assemble Mounting Bracket to box using #12-24 screws (provided) through bottom of box.
- Make sure load rating of 150 LB. is viewable through window slot in bottom of box.
- Assemble Locator Bracket to box by attaching under ear screw.

Caution: Disconnect power supply.

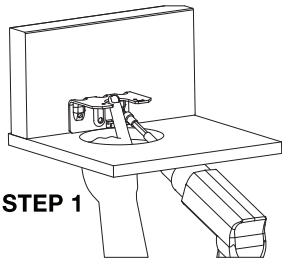
- Remove desired knock out in bottom or side of box.
- Position box to required set-back by using formed set-back tab. Make sure set-back tab is held firmly to joist.
- Mount bracket to joist using 3 wood screws provided. Screws should be fully embedded but not over tightened.
- Remove set-back tab and discard.
- Insert nonmetallic sheathed cable through knockout. Slide NM connector up cable and snap connector into knockout.
- Use ground screw (provided) and connect ground wire.
- Fasten Steel Protection Cover in place to protect wiring.

Mounting Fan or Fixture

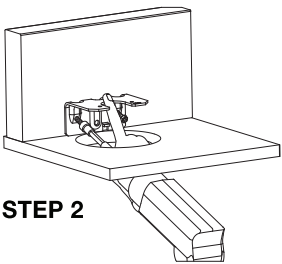
- Remove and discard steel protector cover.
- For mounting fan or fixture over 50 lbs. use 10-32 screws (provided).
- For fixture weighing less than 50 lbs. use 8-32 screws (provided with fixture).
- Wire according to local code requirements.

**OLD WORK INSTALLATION INSTRUCTIONS FOR RACO® Cat. #'s 294, 294-1, 294XL
SUITABLE FOR 70 LBS. FAN AND 70 LBS. FIXTURE IN OLD WORK
MOUNTING CONFIGURATIONS**

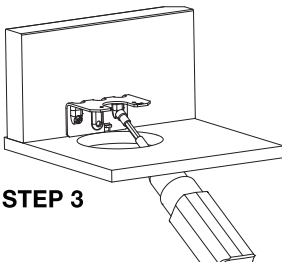
2-1/8" DEEP CEILING BOX 22.3 CUBIC INCH CAPACITY
U.S. PATENT 7,148,420 and other Patent Pending



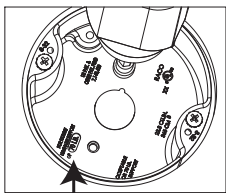
STEP 1



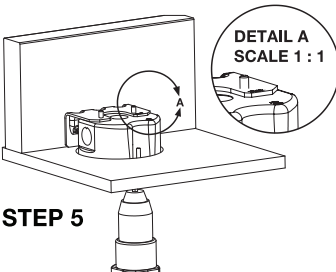
STEP 2



STEP 3



**RATING WINDOW
STEP 4**



STEP 5

- **Caution: Disconnect power supply and remove existing box.**
- Remove Mounting Bracket from box.
- Position Mounting Bracket as shown in Step 1 against joist and drywall as shown. Position bracket so center of bracket is along center line of opening and hold down to pre-drill starting holes. Next start wood screw provided in hardware pack. Do not drive all the way in.
- While still holding down Mounting Bracket, drive second wood screw until tight as shown in Step 2.
- Drive first wood screw tight as shown in Step 3. Screws should be fully embedded but not over tightened.
- Remove desired knockout and insert nonmetallic sheathed cable (maximum NM cable 10-3 with ground) through knockout. Mount box to bracket using two #12-24 screws (provided). Make sure load rating of 70 LB. is viewable through window slot as shown in STEP 4. Slide NM connector onto cable and snap connector into KO.
- Tighten box mounting screws as shown in Step 5.
- Use ground screw provided and connect to ground wire.
- Use 10-32 screws provided for fans and fixtures weighing over 50 lbs.
- Use 8-32 screws (usually provided with fixture) for fixtures weighing less than 50 lbs.
- Discard Disposable Steel Protection Cover and Locator Bracket.
- Wire according to local codes requirements.