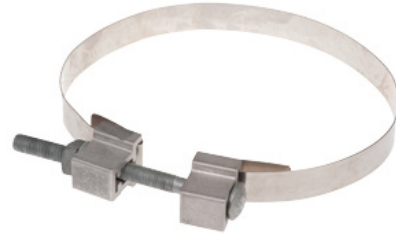
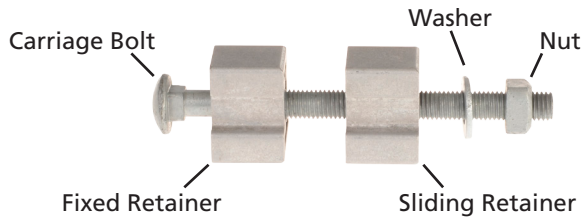


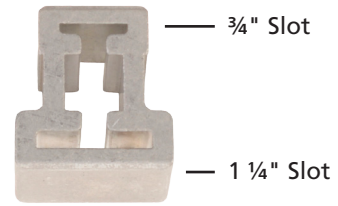
Unassembled band with buckle



Assembled band with buckle

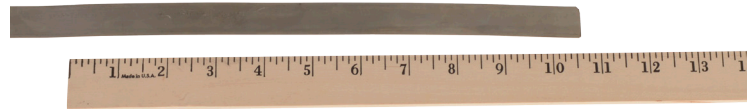


Buckle



Retainer: End View

1. Measure the circumference of the pole where the band is to be installed.
2. Cut the band to a length of 8" to 12" beyond the measured circumference of the pole plus whatever is necessary for additional hardware that will be installed.



3. Measure 4" to 6" from the end and mark the band. Bend the band at this mark, then strike band to create a sharp radius.



*Continued on the next page > > > > >*

4. Slide the band through the fixed retainer in the appropriate size slot and fold the band under retainer where marked.



5. Repeat steps 3 and 4 for the sliding retainer.



6. Bend the band to a 90° angle at the end of each retainer.



7. Place banded assembly around pole at desired location and install the carriage bolt through the two aluminum retainers.



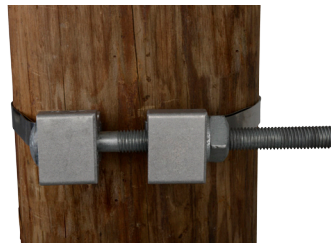
8. Install nut and washer on carriage bolt.



9. Tighten until assembly is secure and all slack has been taken up.



10. Installation Complete



These instructions do not claim to cover all details or variations in equipment, nor to provide for all possible conditions to be met concerning installation, operation, or maintenance of this equipment. If further information is desired or if particular problems are encountered which are not sufficiently covered in this guide, contact Hubbell Power Systems.

