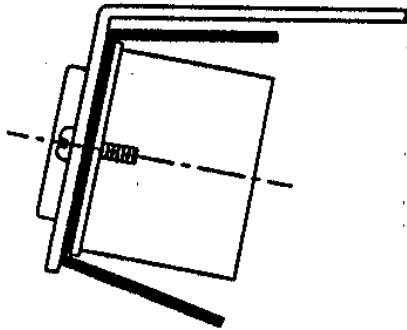


INSTALLATION INSTRUCTIONS for Cat. 3SFBDS Rectangular Device Plate

Power Applications

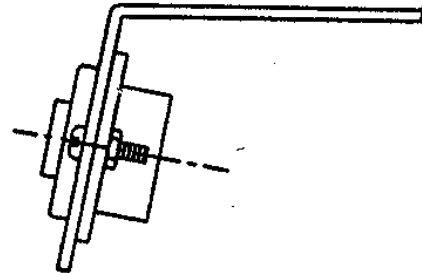


Remove and discard device mounting screws.

Install device with screws provided through the holes spaced farther apart.

CAUTION: INSULATOR
MUST BE INSTALLED BETWEEN RECEPTACLE AND BRACKET AS SHOWN.

Voice/Data Applications



Remove and discard device mounting screws.

Install device with screws provided through the holes nearer to the device opening.

Use hex nuts for a more secure installation.



Wiring Device Division

PD1079

Wiring Device Division HUBBELL INCORPORATED Bridgeport, CT 06605