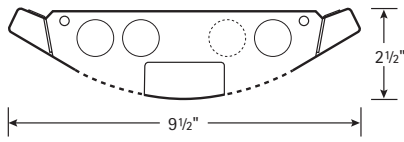
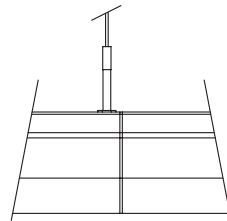


SECTIONS

Three Lamps

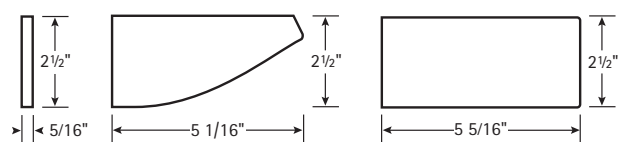


Cross Section



Connection Section

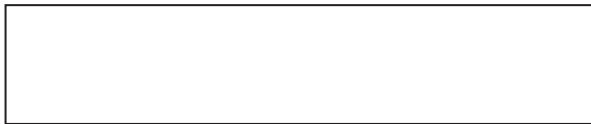
End Cap Options



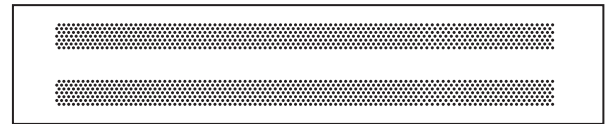
Flat

Bull Nose

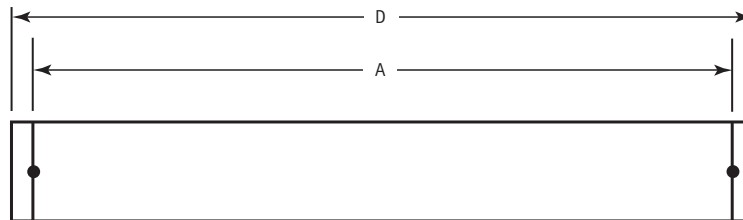
Shallow

BOTTOM VIEW


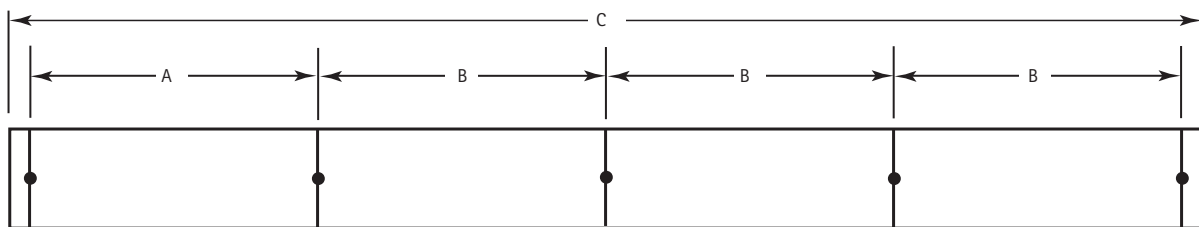
Solid Bottom



Perforated Bottom

SINGLE MOUNTING (INCLUDING FLAT ENDCAPS)


4', 8', 12'

ROW MOUNTING (INCLUDING FLAT ENDCAPS)


4', 8', 12'

DATA CHART

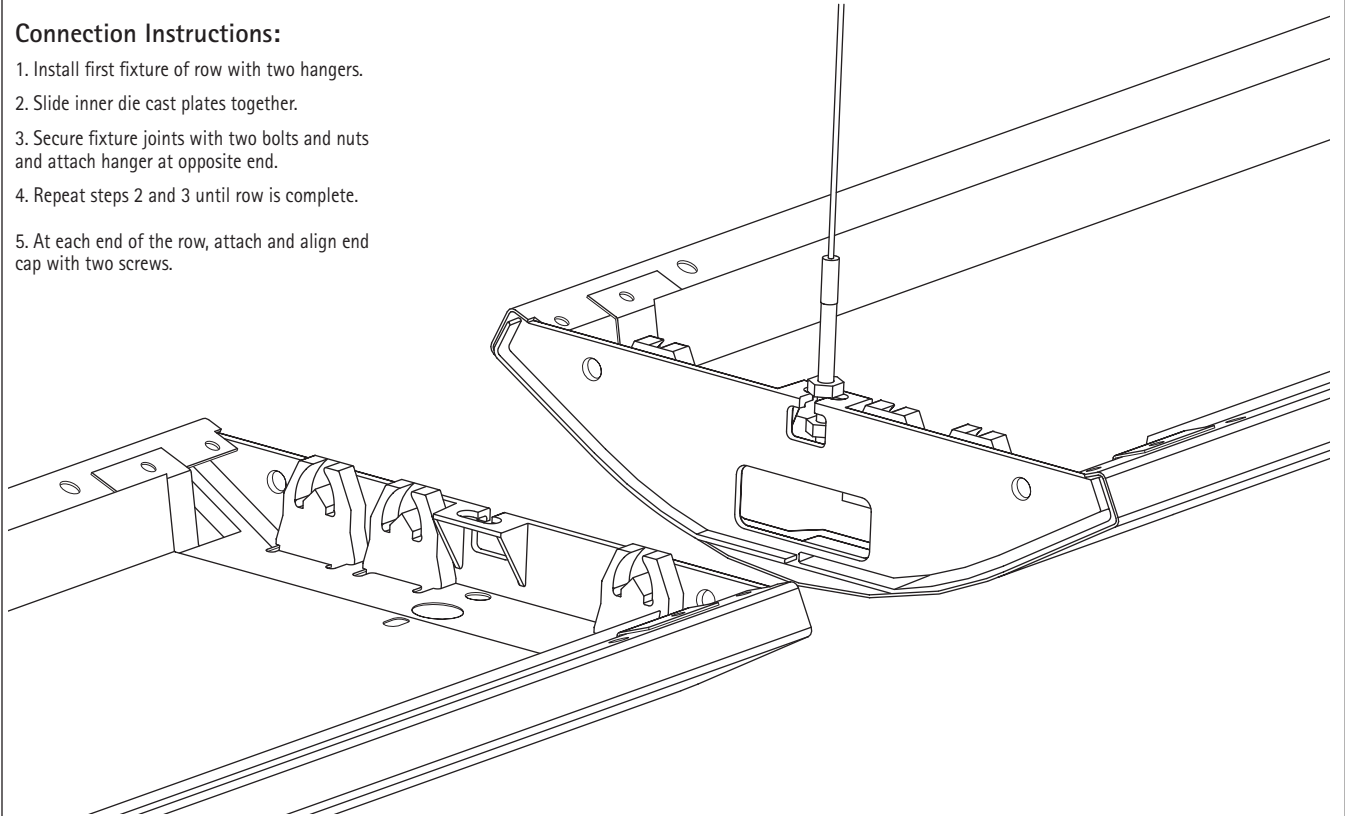
Nominal Length	Approx. Weight			A	B	C	D
	1-lamp	2-lamp	3-lamp				
4'	13.3 lbs.	15.6 lbs.	17.9 lbs.	47 1/4"	48"	192 5/8"	48 5/8"
8'	25.3 lbs.	27.6 lbs.	29.9 lbs.	95 1/4"	96"	384 5/8"	96 5/8"
12'	34.5 lbs.	39.1 lbs.	41.4 lbs.	143 1/4"	144"	576 5/8"	144 5/8"

Note: Suspension data is computed using the standard aircraft cable assembly. The use of rigid stems will yield different data. Please consult factory for stem data.

FIXTURE CONNECTIONS

Connection Instructions:

1. Install first fixture of row with two hangers.
2. Slide inner die cast plates together.
3. Secure fixture joints with two bolts and nuts and attach hanger at opposite end.
4. Repeat steps 2 and 3 until row is complete.
5. At each end of the row, attach and align end cap with two screws.



SUSPENSION ATTACHMENT

Suspension Instructions:

1. Set bottom nuts to desired fixture height.
2. Adjust upper nuts for a minimum of $\frac{3}{8}$ " between upper and lower nuts.
3. Slide cable hanger into hanger slots.
4. Secure and tighten upper nuts.

