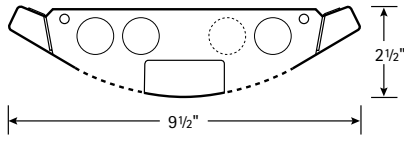
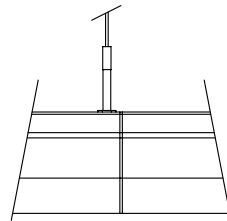


**SECTIONS**

Three Lamps

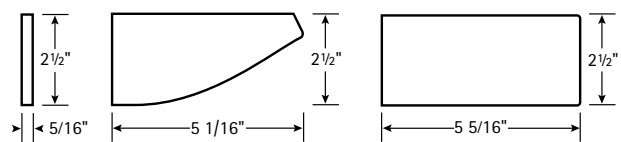


Cross Section



Connection Section

End Cap Options



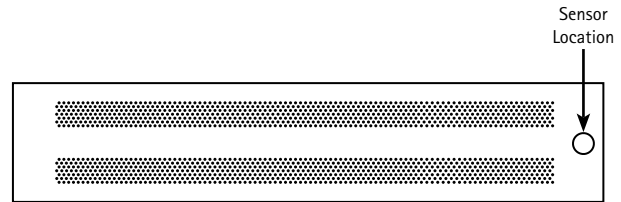
Flat

Bull Nose

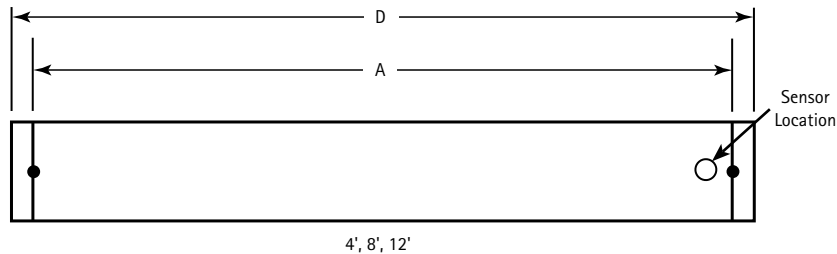
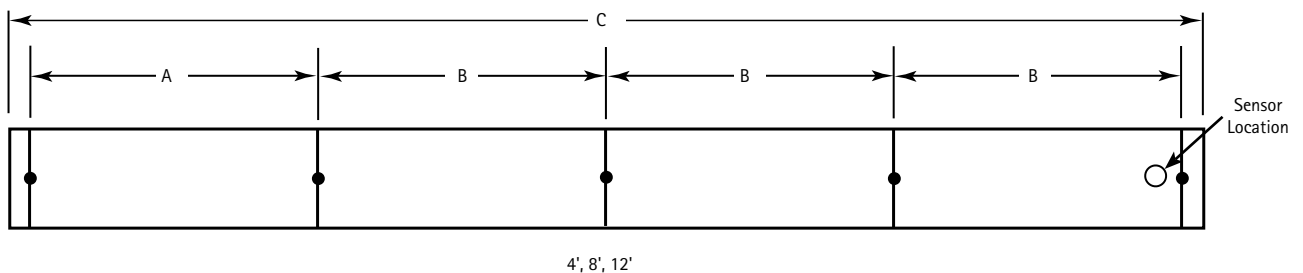
Shallow

**BOTTOM VIEW**


Solid Bottom



Perforated Bottom

**SINGLE MOUNTING (INCLUDING FLAT ENDCAPS)**

**ROW MOUNTING (INCLUDING FLAT ENDCAPS)**

**DATA CHART**

Nominal Length	Approx. Weight			A	B	C	D
	1-lamp	2-lamp	3-lamp				
4'	13.3 lbs.	15.6 lbs.	17.9 lbs.	47 1/4"	48"	192 5/8"	48 5/8"
8'	25.3 lbs.	27.6 lbs.	29.9 lbs.	95 1/4"	96"	384 5/8"	96 5/8"
12'	34.5 lbs.	39.1 lbs.	41.4 lbs.	143 1/4"	144"	576 5/8"	144 5/8"

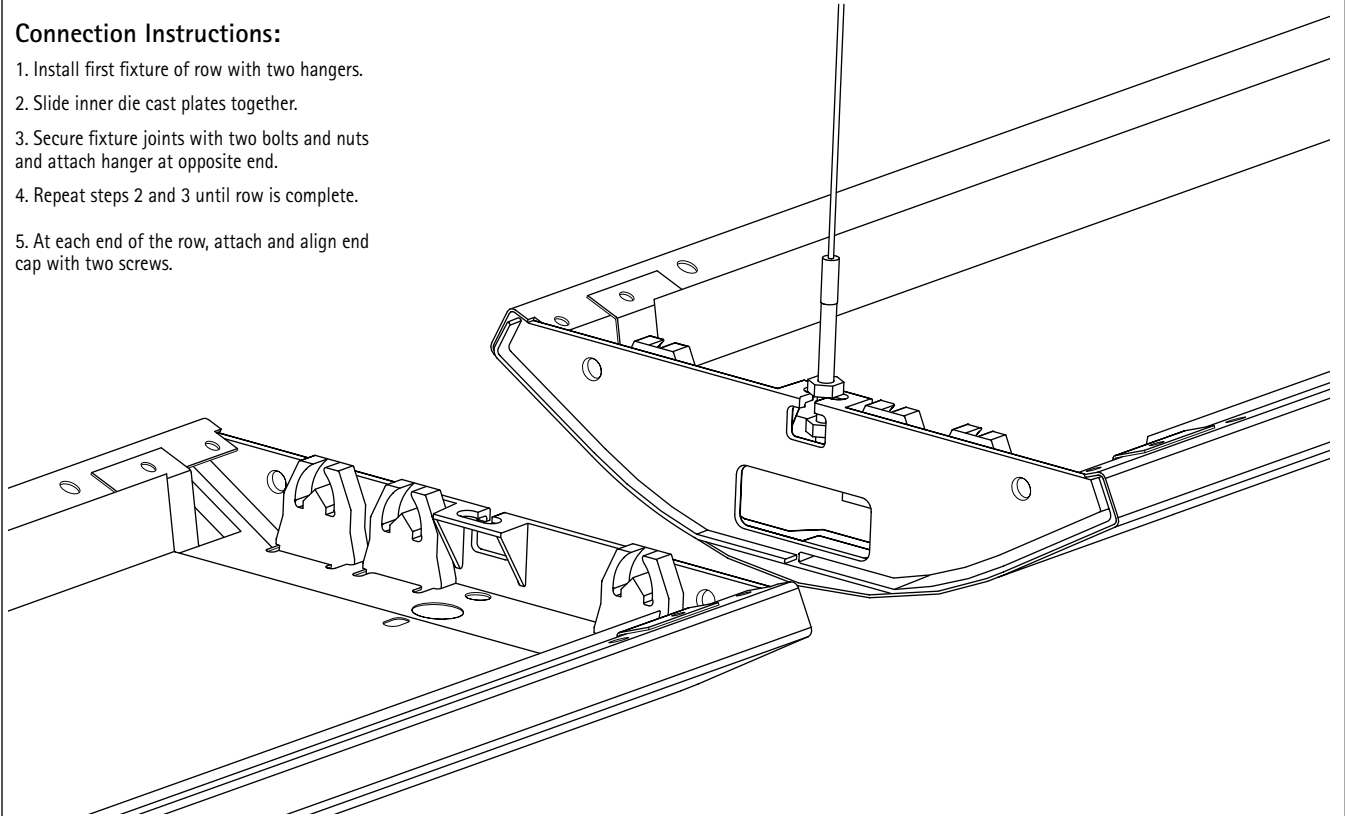
Note: Suspension data is computed using the standard aircraft cable assembly. The use of rigid stems will yield different data. Please consult factory for stem data.

Limitations exist for rows containing Installed Architectural Sensors; contact factory for assistance.

## FIXTURE CONNECTIONS

### Connection Instructions:

1. Install first fixture of row with two hangers.
2. Slide inner die cast plates together.
3. Secure fixture joints with two bolts and nuts and attach hanger at opposite end.
4. Repeat steps 2 and 3 until row is complete.
5. At each end of the row, attach and align end cap with two screws.



## SUSPENSION ATTACHMENT

### Suspension Instructions:

1. Set bottom nuts to desired fixture height.
2. Adjust upper nuts for a minimum of  $\frac{3}{8}$ " between upper and lower nuts.
3. Slide cable hanger into hanger slots.
4. Secure and tighten upper nuts.

