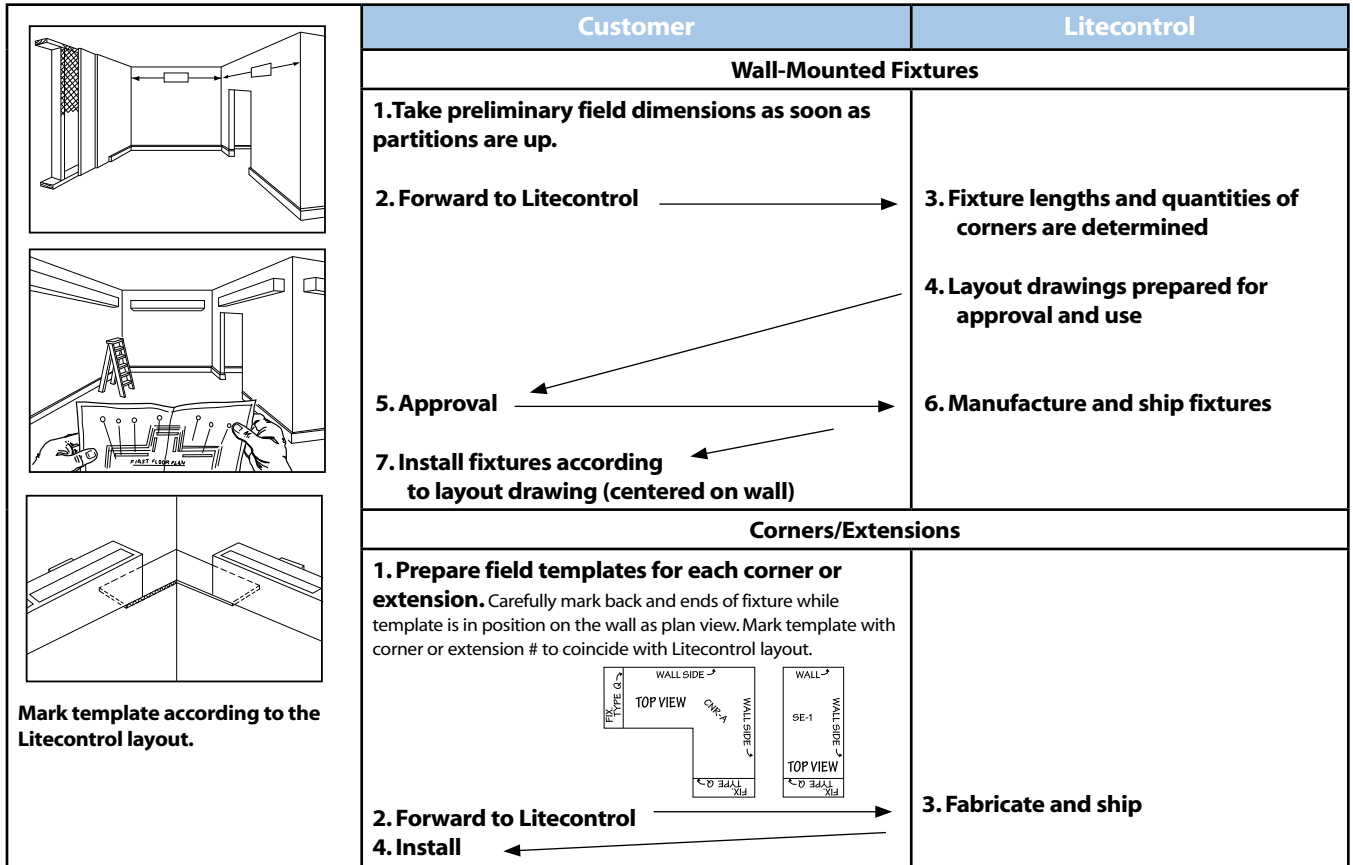


Field Measurement Procedure for System

Use this procedure when supplying field information of custom built items to Litecontrol. It assures correct fit of fixtures and components. Litecontrol manufactures special fixtures, straight extensions, corners, for certain products as listed in the specifications. The tolerance is + or - 1/32" for length, and + or - one degree for angles.



Mark template according to the Litecontrol layout.

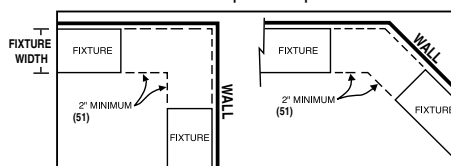
Information Required

- Field data must be in writing, accompanied by our distributor's transmittal letter. Indicate the name and telephone number of the person responsible for the measurements, should questions arise.
- Forward all information to:
 Litecontrol
 Phone: 781-294-0100
 65 Spring Street
 Plympton, MA 02367
 customersupport@litecontrol.com
 Attn: Customer Support
- Mark on each document or template complete location data, such as job name, room number, wall orientation (north, east, etc.), fixture type. Shipping cartons of manufactured items will be marked with a code corresponding to the information.
- Drawings showing dimensions and templates furnished must be shown in plan view (looking down on the fixture, pen or pencil facing floor) and must be stated as such. Do not use marker. Use well sharpened pencil.
- Measurements must be taken at the elevation the fixtures will be mounted. Lengths should be taken to 1/32", angles and corners to one degree.
- Full scale templates on clean cardboard or some other rigid material are frequently the best way to delineate sizes of angular items. In addition to information

required in item #3, indicate on the template: a) which surface butts against the wall; b) on each end identify the adjoining fixture.

Terms

- Field measurements are not the responsibility of Litecontrol personnel or their representatives.
- Litecontrol's responsibility ends with the manufacture of all items to the given field dimensions, within the standard tolerance.
- Allow a minimum of 6 weeks for manufacture of corners and extensions after receipt of templates.



Observe 2" (51mm) minimum corner dimensions shown in plan views above.

Note: Due to wall irregularities, templates must locate ends of fixture as shown.

Note: If SE for a particular product is not shown, please contact factory for clarification.

Straight Extension Minimum Lengths

Product	Catalog Number	Minimum Length	
		(inches)	(mm)
Open bottom straight extension:			
Mod-66	P-D-66N S-D-66N R-D-66N W-D-66N W-ID-66N	3 1/4	83
Smooth bottom straight extension:			
Mod-66	P-D-66N W-D-66N W-ID-66N	4 1/2	114
LC-90	P-ID-9000	4	102
Wall Classica	W-AI-5500	3	76
Wall Arcos	W-AI-5600	3	76
Wall SAE	W-AI-96 P,S,N	3	76