

HBL – INDUSTRIAL LED HIGHBAY INSTALLATION INSTRUCTIONS



SEE WARNING ON CARTON

WARNINGS:

- This product contains chemicals known to the state of California to cause cancer, birth defects and/or other reproductive harm. Thoroughly wash hands after installing, handling, cleaning, or otherwise touching this product.
- Contact Hubbell Lighting, Inc. for information and direction before re-lamping or replacing this light fixture.
- Disconnect power before installing or servicing.
- Install, operate and maintain to meet all applicable codes.
- Protect all wiring connections with approved insulators (by others).
- Selected fixture voltage must match supply line voltage.

GENERAL INFORMATION, CONDUIT MOUNT:

- All 12" (304.8 mm) minimum supply wire outside of conduit.
- Fixture housing conduit threads are 3/4-14 NPS or 1-11 1/2 NPS.
- Use a waterproof pipe joint compound (by others) for all entries into housing.
- Plug all unused entries into housing (if applicable).

PENDANT/CONDUIT & CONE MOUNT: (See Figures 1a, 1b, 2, and 3)

1. To ease installation, top cover (1) should be removed from the fixture assembly. Unfasten the latch (2) and the top cover casting can be removed from the hinge pin assembly (3).
2. Feed electrical supply wire through the center threaded hole in the top cover and thread top cover onto conduit until tight.
3. Tighten set screw located on conduit hub inside the cover to prevent fixture rotation.
4. Fixture ground wire connection can be made with supply ground at this point if desired.
5. Lift fixture assembly and place the hinge pin (3) in the cradle (4) of the top cover casting. The fixture can now hang from the hinge pin.
6. Make remaining wiring connections. See appropriate WIRING SCHEMATIC for reference. If ground wire was not connected earlier, connect the fixture ground with the incoming ground wire. There will be a single white and a single black wire providing power to the entire array of LED drivers. Incoming power to be connected to the white wire and the black wire. See warnings above about wire connections.
7. Dress wires as needed.
8. Gently pivot the assembly up until the lower portion of the fixture is against the top cast cover. The lower portion of the fixture should "nest" inside the fixture cover (1). The orange sealing gasket (5) should compress evenly as well.
9. Swing wire bail of the latch (6) over the top cover at the latching point (7).
10. Press the latch lever (8) to draw the two halves of the fixture together and seal.

STRAIGHT STANCHION/POLE MOUNT: (See Figures 1c, 2, and 3)

1. To ease installation, top cover (1) should be removed from the fixture assembly. Unfasten the latch (2) and the top cover casting can be removed from the hinge pin assembly (3).
2. Feed electrical supply wire from the mounting pole through the wireway in the top cover and then thread/screw the top cover onto the mounting pole until tight (and in desired orientation).
3. Tighten set screw location on cast top to prevent fixture rotation.
4. Follow steps 4 through 10 from previous section of instructions.

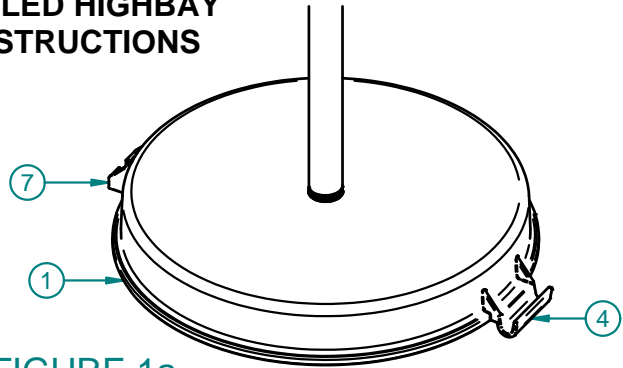


FIGURE 1a

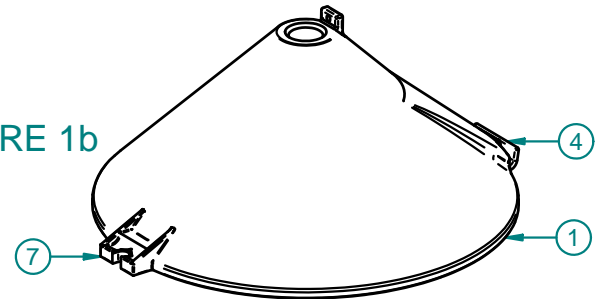


FIGURE 1b

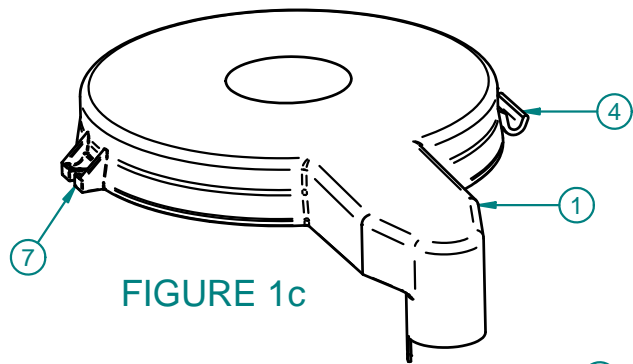


FIGURE 1c

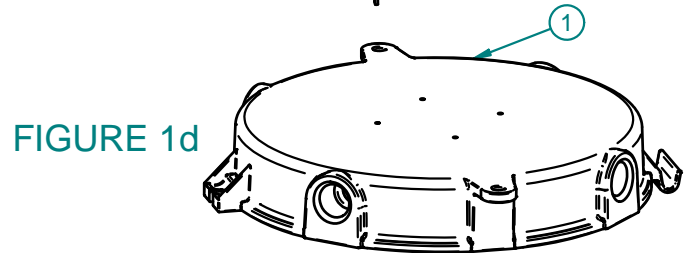


FIGURE 1d

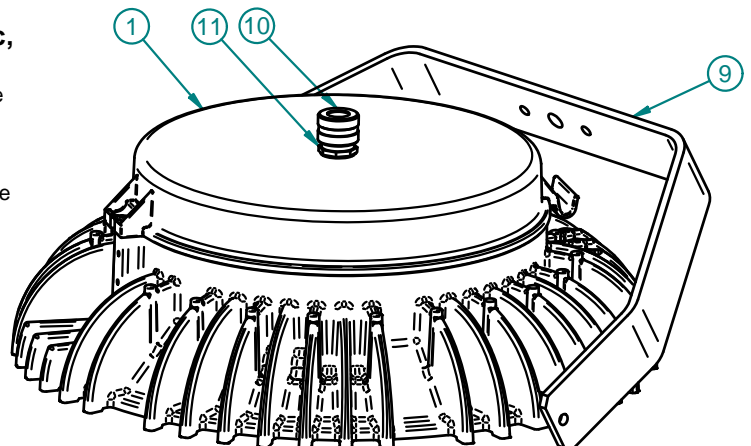
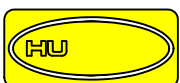


FIGURE 1e



Hubbell Lighting, Inc.
A subsidiary of Hubbell Incorporated
701 Millennium Drive • Greenville, SC 29607

Industrial Lighting

Doc. No. 93043502
Revision E
Phone (864) 678-1000

HBL – INDUSTRIAL LED HIGHBAY INSTALLATION INSTRUCTIONS



SEE WARNING ON CARTON

GENERAL INFORMATION, CONDUIT MOUNT:

- All 12" (304.8 mm) minimum supply wire outside of conduit.
- Fixture housing conduit threads are 3/4-14 NPS.
- Use a waterproof pipe joint compound (by others) for all entries into housing.
- Plug all unused entries into housing (if applicable).

CEILING/FLUSH MOUNT: (See Figures 1d, 2, and 3)

1. To ease installation, top cover (1) should be removed from the fixture assembly. Unfasten the latch (2) and the top cover casting can be removed from the hinge pin assembly (3).
2. Feed electrical supply wire through the appropriate threaded hole/hub in the top cover and thread conduit into the top cover until tight. For applications using "thru-wiring" all conduit should be attached to the top cover.
3. Attach top cover to ceiling using recommended hardware, BUT DO NOT TIGHTEN THE TOP COVER TO THE CEILING. Clearance between the fixture housing and the ceiling is necessary at this point.
4. Fixture ground wire connection can be made with supply ground at this point if desired.
5. Lift fixture assembly and place the hinge pin (3) in the cradle (4) of the top cover casting. There should be enough clearance between the hinge cradle and the ceiling to allow the hinge pin placement. The fixture can now hang from the hinge pin.
6. TIGHTEN THE TOP COVER TO THE CEILING.
7. Make remaining wiring connections. See appropriate WIRING SCHEMATIC for reference. If ground wire was not connected earlier, connect the fixture ground with the incoming ground wire. There will be a single white and a single black wire providing power to the entire array of LED drivers. Incoming power to be connected to the white wire and the black wire. See warnings above about wire connections.
8. Dress wires as needed.
9. Gently pivot the assembly up until the lower portion of the fixture is against the top cast cover. The lower portion of the fixture should "nest" inside the fixture cover (1). The orange sealing gasket (5) should compress evenly as well.
10. Swing wire bail of the latch (6) over the top cover at the latching point (7).
11. Press the latch lever (8) to draw the two halves of the fixture together and seal.

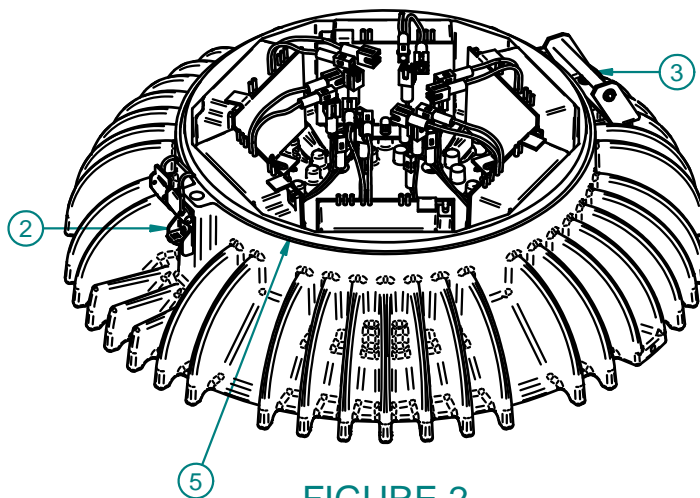


FIGURE 2

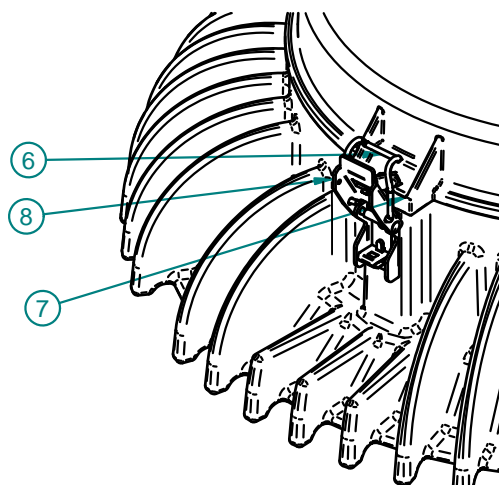


FIGURE 3

YOKE MOUNT: (See Figures 1e, 2, and 3)

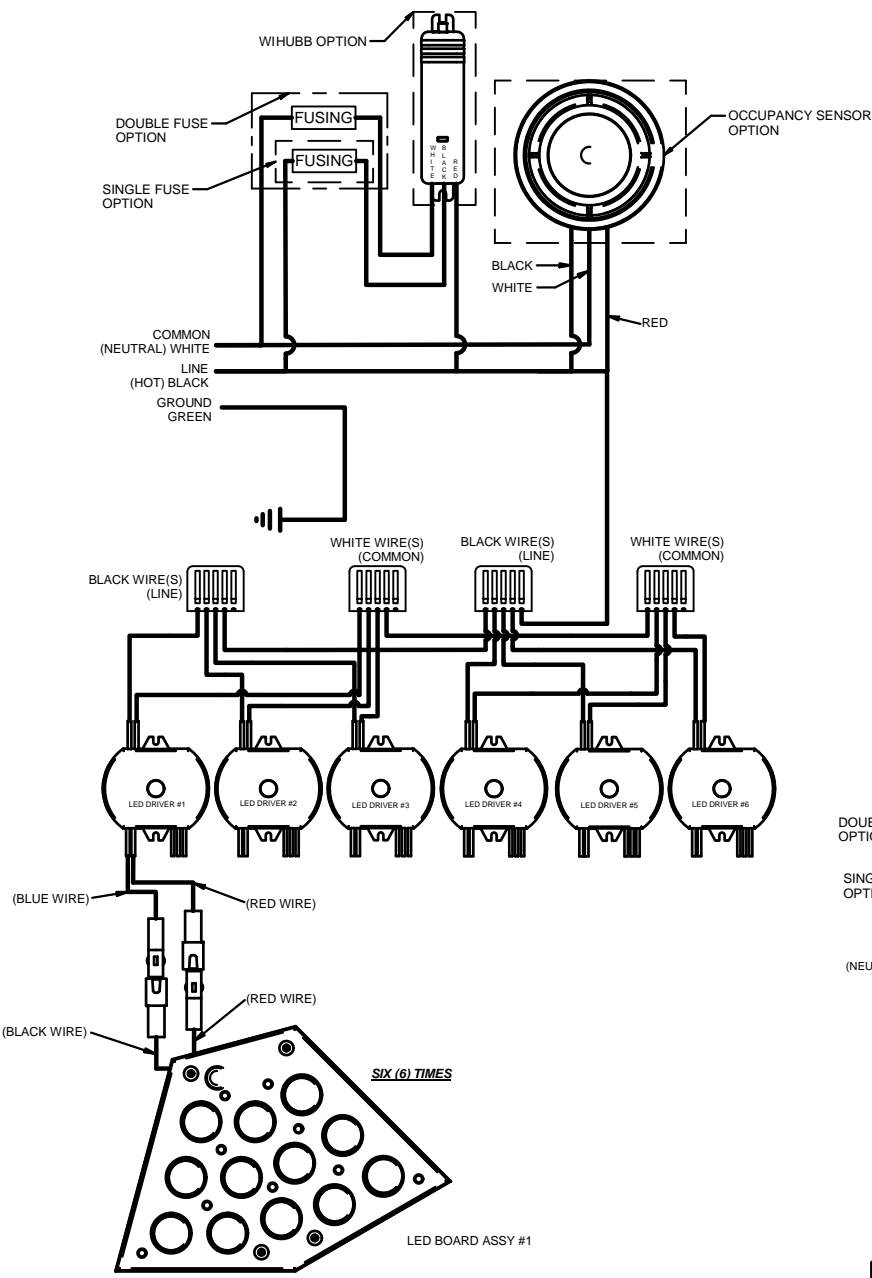
1. Yoke mounting bracket (9) is shipped with the fixture, but is not assembled at the factory. Mounting hardware is also included.
2. Position the yoke as shown in Figure 1e, lining up the mounting holes of the yoke with the drilled and tapped holes in the fixture housing.
3. Attach the yoke to the fixture housing loosely, using the flat washers, lock washers, and ¼-20 screws.
4. To ease installation, top cover (1) should be opened/removed from the fixture assembly. Unfasten the latch (2) and the top cover casting can be opened/removed from the hinge pin assembly (3).
5. Feed electrical supply cord (customer supplied) through the strain relief (10) and reducer bushing (11) and through the threaded hole in the top cover.
6. Fixture wiring to supply wiring can be completed at this point (see WIRING SCHEMATIC for reference).
7. To help with wire management, eliminate slack in the electrical cord inside the fixture before completely threading the strain relief into the reducer bushing. Thread the strain relief /reducer bushing into the top cast cover until tight.
8. Tighten set screw located on conduit hub inside the cover to prevent rotation of the strain relief.
9. Determine final position of yoke mounting bracket and then tighten all hardware.



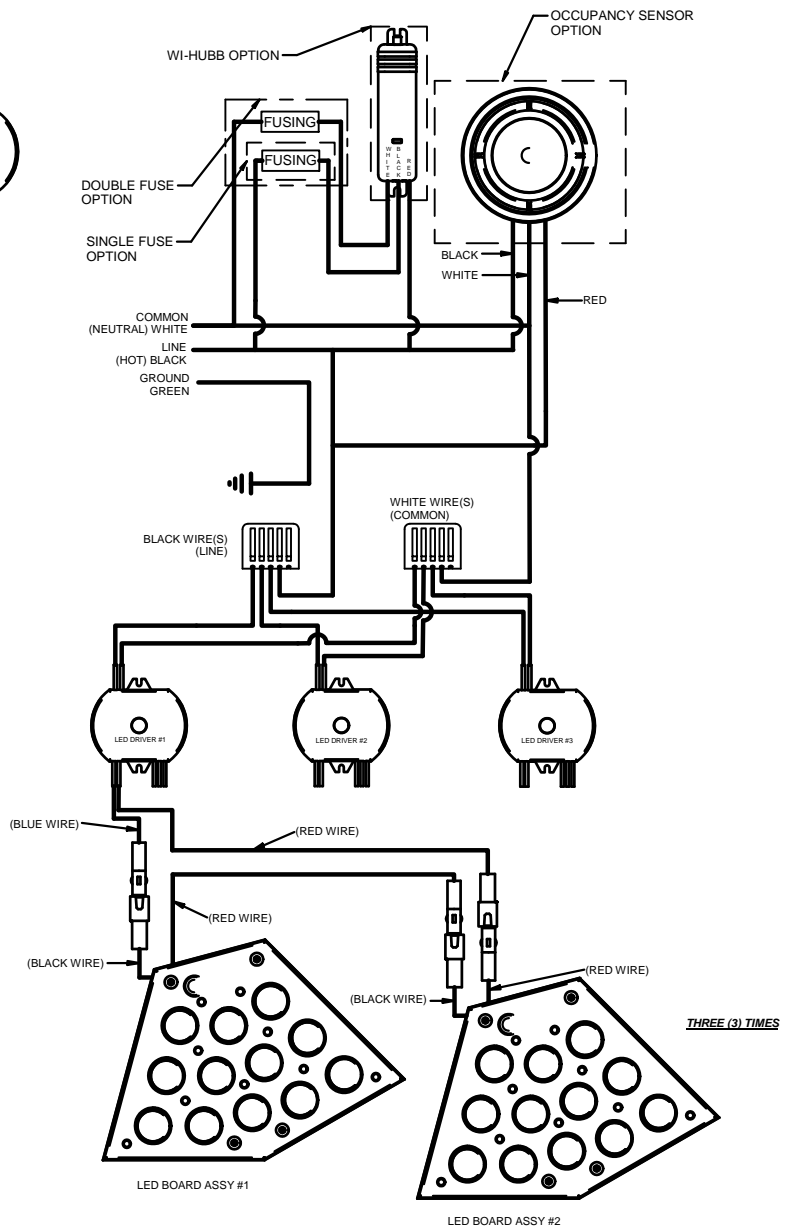
Hubbell Lighting, Inc.
A subsidiary of Hubbell Incorporated
701 Millennium Drive • Greenville, SC 29607

Industrial Lighting

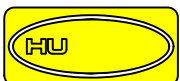
Doc. No. 93043502
Revision E
Phone (864) 678-1000



WIRING SCHEMATIC - HBL/HBLH
60 & 72 LED FIXTURE



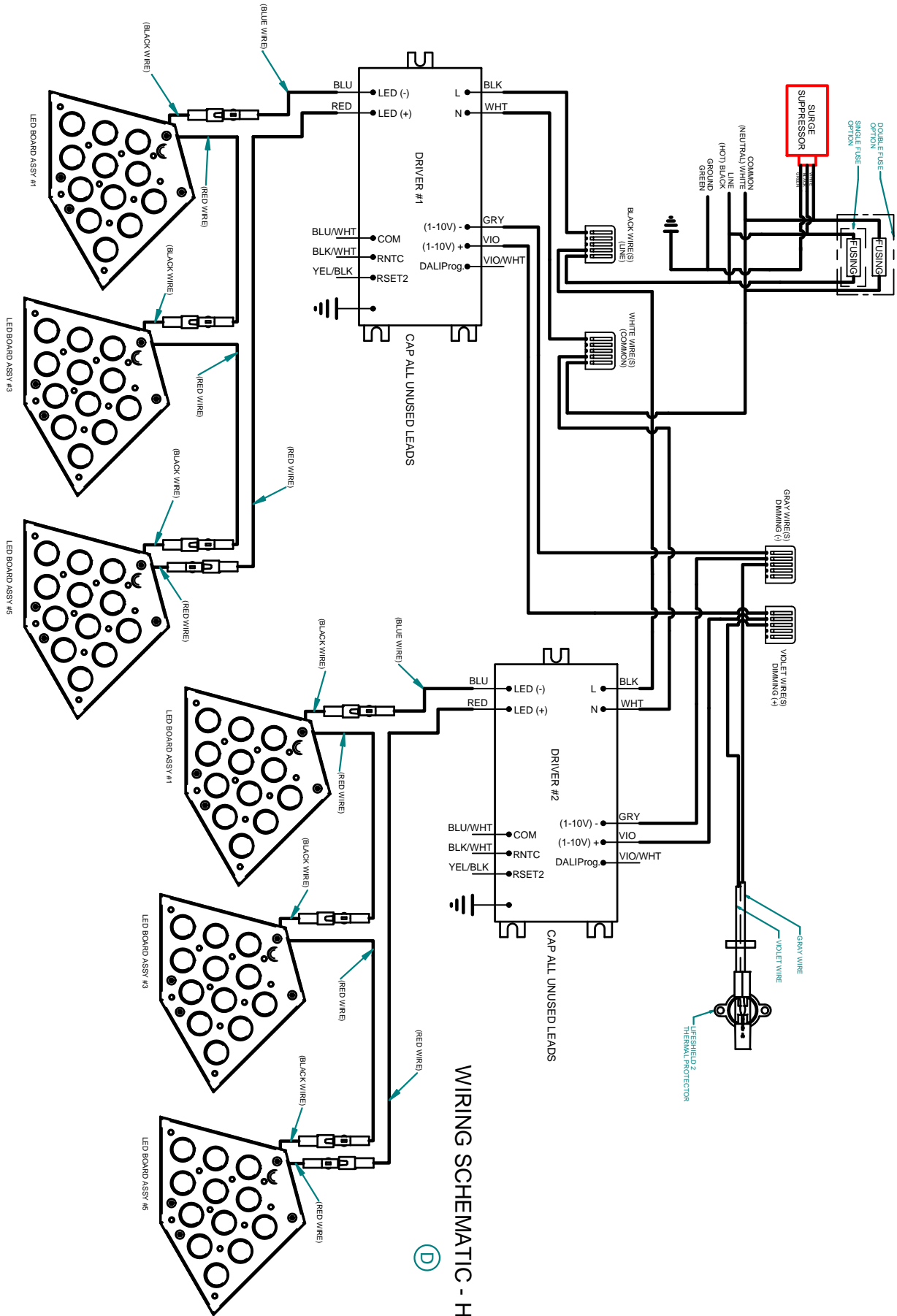
WIRING SCHEMATIC - HBL/HBLH
48 LED FIXTURE



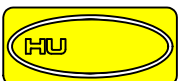
Hubbell Lighting, Inc.
A subsidiary of Hubbell Incorporated
701 Millennium Drive • Greenville, SC 29607

Industrial Lighting

Doc. No. 93043502
Revision E
Phone (864) 678-1000



WIRING SCHEMATIC - HBLHA



Hubbell Lighting, Inc.
 A subsidiary of Hubbell Incorporated
 701 Millennium Drive • Greenville, SC 29607

Industrial Lighting

Doc. No. 93043502
 Revision E
 Phone (864) 678-1000