

REV	DATE	RECORD	DESN	CHCK
A	12/23/13	ECN # 140120012	RC	KC

2 UP LED BOARD	
ITEM # 13 P/N	DESCRIPTION
93047432-3012	3000K
93047432-3014	4100K
93047432-3015	5100K

26	80115	16 INCHES	RED 18 AWG WIRE	
25	80104	16 INCHES	BLACK 18 AWG WIRE	
24	A84048	2	NUT 1/4-20 HEX SS	
23	93049759	1	BRACKET FGL/FGS LED MOUNTING	
22	A86002-2	1	SCR-1/4-20x10 LG. SS THRD.STUD	PA3 / PA5 LENS
	A86002	1	SCR-1/4-20x7 LG. SS THRD.STUD	SLG LENS
21	88552	1	FEMALE 4-PIN QUICK DISCONNECT	
20	88548	1	FEMALE 2-PIN QUICK DISCONNECT	
19	88110	6	Socket, Quick Disconnect	
18	A74011	1	TERMINAL-FEMALE	
17	A74010	1	TERMINAL-MALE	
16	93023746	4	93023746 SCR. 6-32 x 1/4" PHH PHMS SS	
15	93049774	2	PLATE LED UPLIGHT	
14	93045602	2	93045602 Pico Emmitter, Acrylic	
13	SEE SHART	2	ASSY-PCB 2LED BOARD 1X2	
12	93049762	1	BRACKET LED UPLIGHT FGL-FGS	
11	A84032	2	SCR-8-32X1/2 PHH PHMS SS	
10	93049763	1	BRACKET LIFESHIELD Y-LED	
9	A74106	2	WIRE TERMINAL	
8	A74026	AR	CABLE TIE GT50S2 BIN ITEM	NOT SHOWN
7	93017851	2	SCR-4-40x3/16 PHH PH MS SS	
6	93042082-080051	1	SWITCH THERMAL N. O.	
5	A84041	3	SETSCR-1/4-20x1 SS	
4	A84051	5	SCR-1/4-20x1/2 BTN HD CAP SS	
3	A56332-18	3	STANDOFF 3/8"DIA. X 8"	
2	93041672	1	32-LED OPTICAL ASSEMBLY	
1	93046560	1	FGL/FGS LED MOUNTING PLATE	
ITEM	PART #		DESCRIPTION	NOTES

PARTS LIST

UNSPECIFIED TOLERANCES: INCHES
X.X=±0.1 X.XX=±0.03 X.XXX=±0.010
FRACTIONS=±1/32 ANGULAR TOLERANCE=±1°



This document contains confidential and proprietary information of Architectural Area Lighting, a division of Hubbell Lighting, Inc. (HLI). Receipt or possession of this document does not convey any rights to reproduce or disclose its contents, or to make, use, or sell anything it may disclose. Reproduction, disclosure, or use of the document or its contents, without the specific written authorization of HLI, may violate the intellectual property rights of HLI.

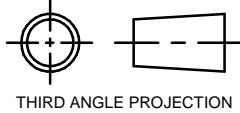
RETROFIT KIT Y-LED FGL SLG-PA3-PA5 LENS

DIMENSIONS IN INCHES
DIMENSIONS IN [] IN MM
CONFORMS TO ASME Y14.5M
DO NOT SCALE PRINT

DRAWN:
rcarrillo 12/23/13
CHECKED BY:
--- --/--/--

ENGINEERING:
KC 12/23/13
CATALOG NO.
FGL Y-LED

MATERIAL:		FINISH:		PART NO. 93049782	
SCALE	SIZE B	DRAWING NO. 93049782		REV. A	SHT 1 1 SHTS



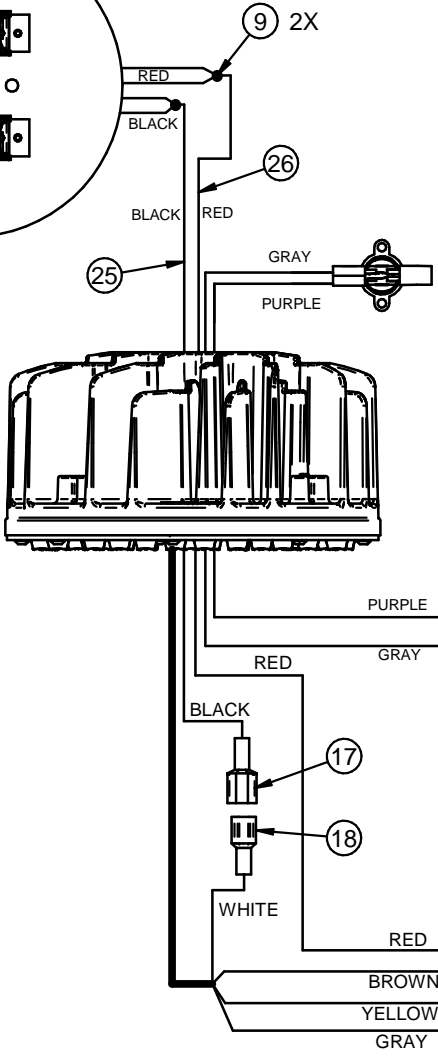
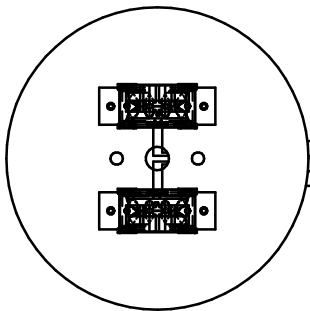
THIRD ANGLE PROJECTION

B

B

A

A

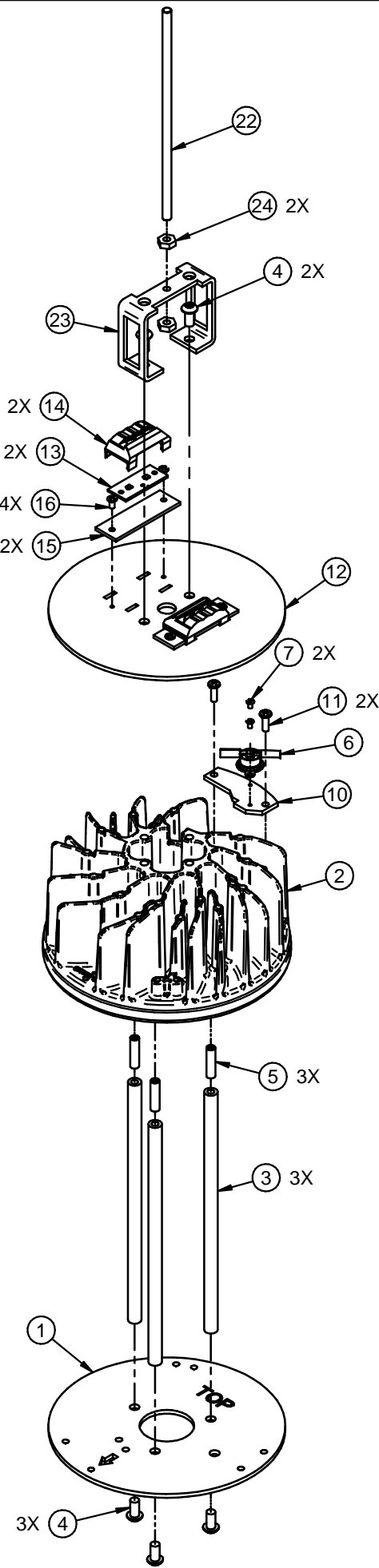


2-PIN FEMALE CONNECTOR	
WIRE COLOR	TO SLOT #
PURPLE	1
GRAY	2

SIDE VIEW

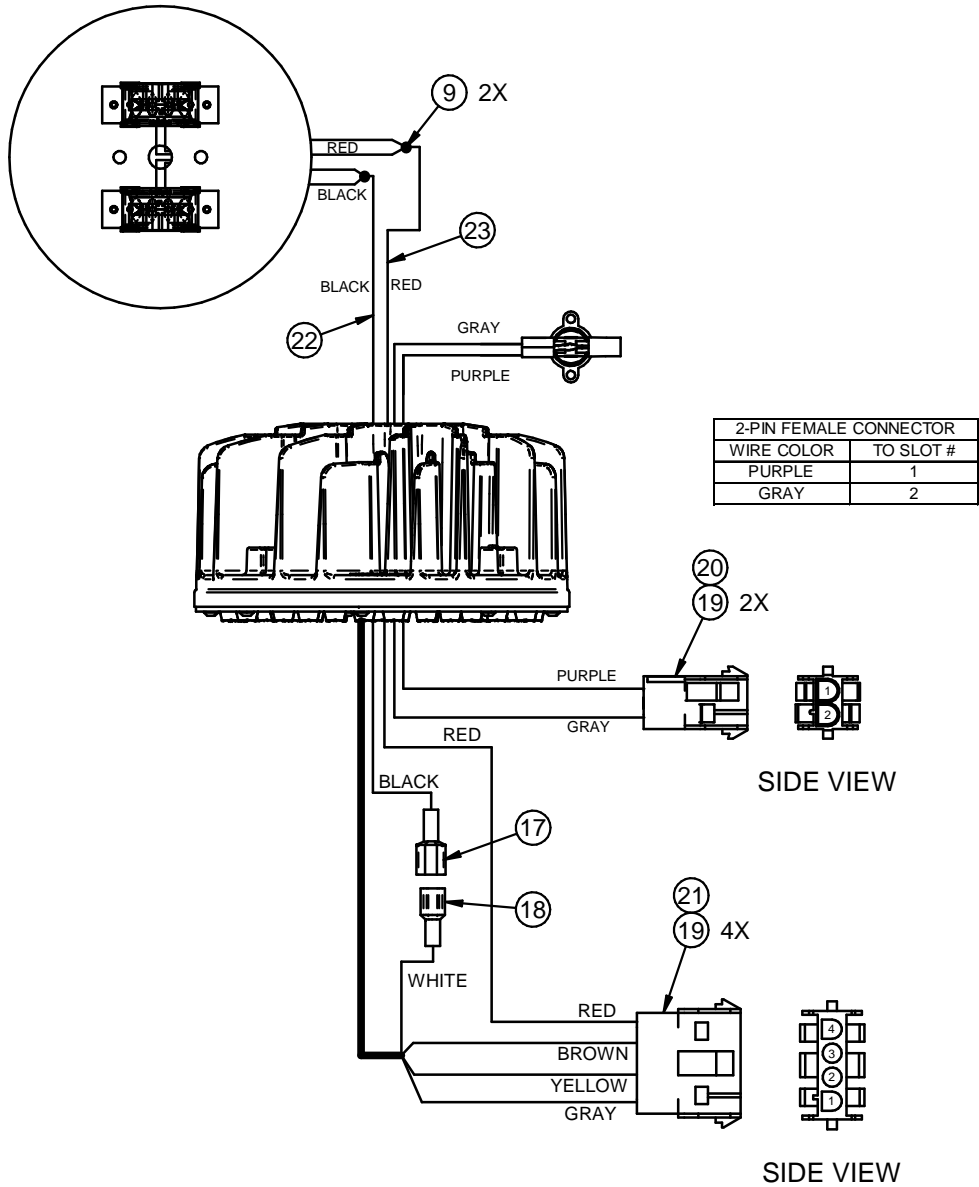
4-PIN FEMALE CONNECTOR	
WIRE COLOR	TO SLOT #
RED	4
BROWN	3
YELLOW	2
GRAY	1

SIDE VIEW

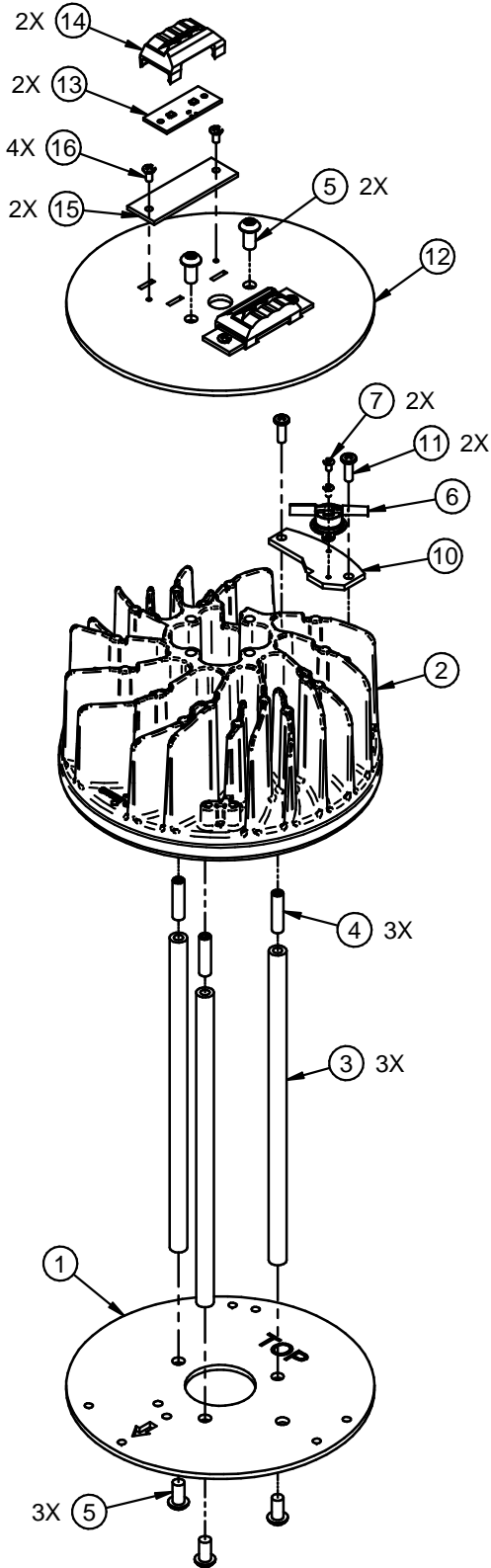


REV	DATE	RECORD	DESN	CHCK
A	12/20/13	ECN # 140120012	RC	KC

B



A



2 UP LED BOARD	
ITEM # 13 P/N	DESCRIPTION
93047432-3012	3000K
93047432-3014	4100K
93047432-3015	5100K

23	80115	16 INCHES	RED 18 AWG WIRE	
22	80104	16 INCHES	BLACK 18 AWG WIRE	
21	88552	1	FEMALE 4-PIN QUICK DISCONNECT	
20	88548	1	FEMALE 2-PIN QUICK DISCONNECT	
19	88110	6	Socket, Quick Disconnect	
18	A74011	1	TERMINAL-FEMALE	
17	A74010	1	TERMINAL-MALE	
16	93023746	4	93023746 SCR. 6-32 x 1/4" PHH PHMS SS	
15	93049774	2	PLATE LED UPLIGHT	
14	93045602	2	93045602 Pico Emmitter, Acrylic	
13	SEE SHART	2	ASSY-PCB 2LED BOARD 1X2	
12	93049762	1	BRACKET LED UPLIGHT FGL-FGS	
11	A84032	2	SCR-8-32X1/2 PHH PHMS SS	
10	93049763	1	BRACKET LIFESHIELD Y-LED	
9	A74106	2	WIRE TERMINAL	NOT SHOWN
8	A74026	AR	CABLE TIE GT50S2 BIN ITEM	NOT SHOWN
7	93017851	2	SCR-4-40x3/16 PHH PH MS SS	
6	93042082-080051	1	SWITCH THERMAL N. O.	
5	A84051	5	SCR-1/4-20x1/2 BTN HD CAP SS	
4	A84041	3	SETSCR-1/4-20x1 SS	
3	A56332-18	3	STANDOFF 3/8"DIA. X 8"	
2	93041672	1	32-LED OPTICAL ASSEMBLY	
1	93046560	1	FGL/FGS LED MOUNTING PLATE	
ITEM	PART #	QTY	DESCRIPTION	NOTES

PARTS LIST

UNSPECIFIED TOLERANCES: INCHES X.X=±0.1 X.XX=±0.03 X.XXX=±0.010 FRACTIONS=±1/32 ANGULAR TOLERANCE=±1°	
DIMENSIONS IN INCHES DIMENSIONS IN [] IN MM CONFORMS TO ASME Y14.5M DO NOT SCALE PRINT	DRAWN: rcarrillo 12/20/13 CHECKED BY: --- --/--/-- ENGINEERING: KC 12/20/13 CATALOG NO. FGL Y-LED
	THIRD ANGLE PROJECTION



This document contains confidential and proprietary information of Architectural Area Lighting, a division of Hubbell Lighting, Inc. (HLI). Receipt or possession of this document does not convey any rights to reproduce or disclose its contents, or to make, use, or sell anything it may disclose. Reproduction, disclosure, or use of the document or its contents, without the specific written authorization of HLI, may violate the intellectual property rights of HLI.

RETROFIT KIT Y-LED FGL SAL LENS

MATERIAL:		FINISH:		PART NO. 93049781	
SCALE	SIZE B	DRAWING NO. 93049781		REV. A	SHT 1 1 SHTS



Installation Instructions

Fixture: FEDERAL GLOBE™ (FGL/ FGS) FOR LED

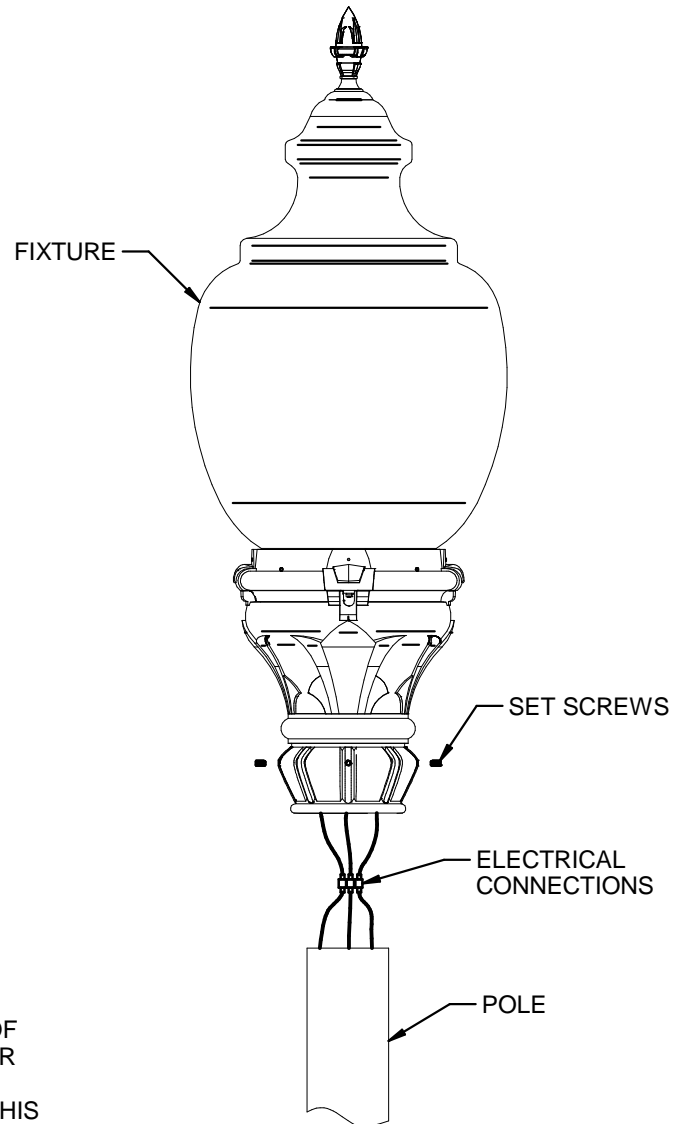


WARNING: Fixtures must be grounded in accordance with local codes or the National Electrical Code. Failure to do so may result in serious personal injury.

MAINTENANCE: A regularly scheduled maintenance program should be established to retain optimum light output and reduce heat retention. Dusting with a soft, clean, dry cloth is normally sufficient for the optics.

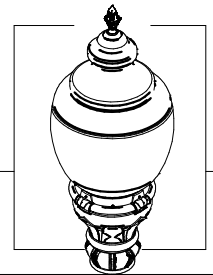
CAUTION: All wiring must be done by a qualified electrician. KEEP THIS SHEET FOR FUTURE REFERENCE.

1. Be sure all power is **OFF**.
2. Make wire connections from incoming supply to fixture as shown. (White to White, Black to Black and Green to Green) (Note: fixture must be grounded to incoming equipment ground supply.)
3. Slip fixture over pole top or tenon. Secure with four (4) supplied stainless steel set screws.
4. Turn power ON.



WARNING:

THIS PRODUCT CONTAINS CHEMICALS KNOWN TO THE STATE OF CALIFORNIA TO CAUSE CANCER, BIRTH DEFECTS, AND/OR OTHER REPRODUCTIVE HARM. THOROUGHLY WASH HANDS AFTER INSTALLING, HANDLING, CLEANING OR OTHERWISE TOUCHING THIS PRODUCT.



Y-LED Upgrade Kit Installation Guide

Fixture: FGL - Federal Globe Large Scale (FGL) - For SLG/PA3/PA5 Lens

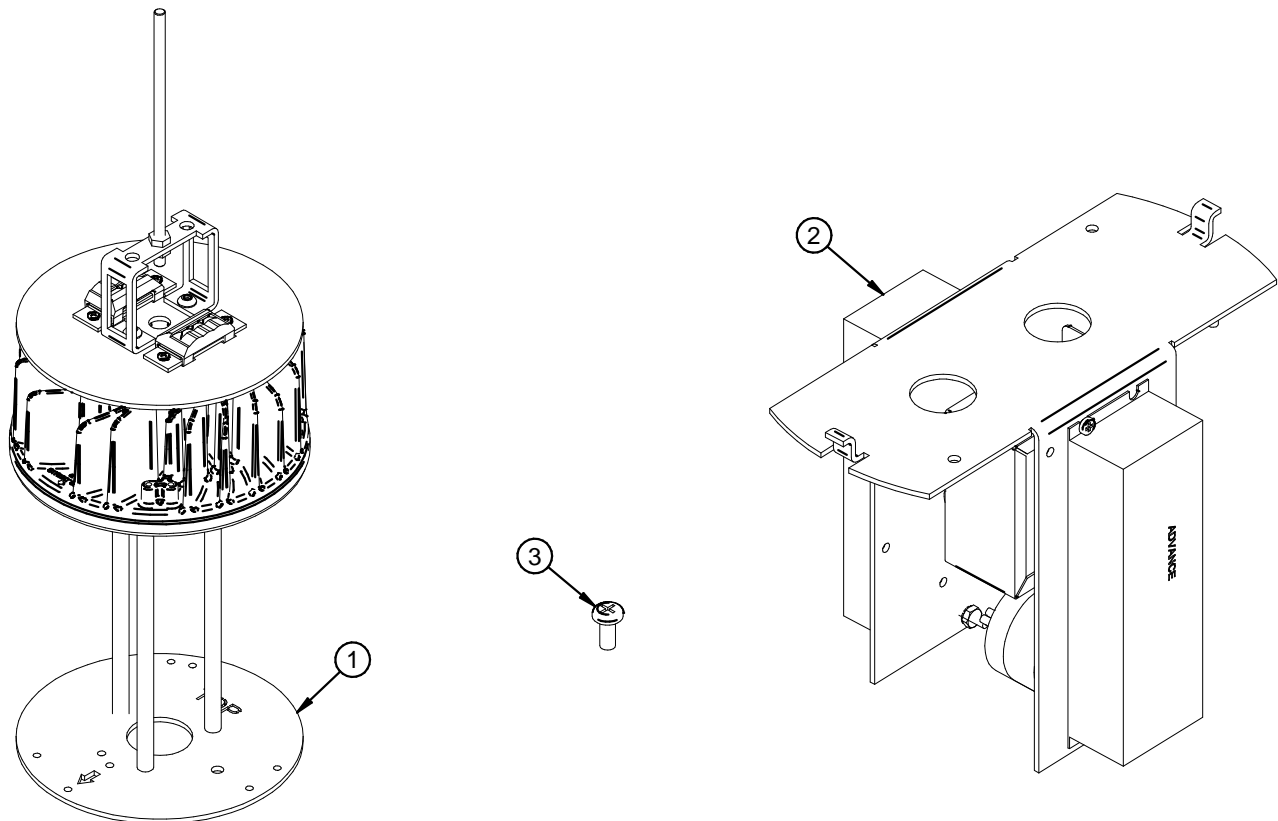


WARNING: Fixtures must be grounded in accordance with local codes or the National Electrical Code. Failure to do so may result in serious personal injury.

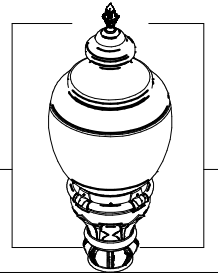
MAINTENANCE: A regularly scheduled maintenance program should be established to retain optimum light output and reduce heat retention. Dusting with a soft, clean, dry cloth is normally sufficient for the optics.

CAUTION: All wiring must be done by a qualified electrician. KEEP THIS SHEET FOR FUTURE REFERENCE.

UPGRADE KIT CONTENTS



PARTS LIST			
ITEM #	QTY	PART #	DESCRIPTION
1	1	93049782	RETROFIT KIT Y-LED FGL SLG-PA3-PA5 LENS
2	1	93049772	RETROFIT KIT Y-LED FGL DRIVER ASSY
3	3	A84033	SCR-8-32 x 3/8" PHLPS PHMS S/S



Y-LED Upgrade Kit Installation Guide

Fixture: FGL - Federal Globe Large Scale (FGL) - For SLG/PA3/PA5 Lens

1. REMOVE EXISTING REFLECTOR ASSEMBLY

⚠️ TURN OFF ALL POWER TO THE UNIT AND TAKE PROPER SAFETY PRECAUTION. FAILURE TO DO SO MAY RESULT IN SERIOUS PERSONAL INJURY.

1. REMOVE FINIAL BY TURNING IT COUNTER CLOCKWISE. (FIG. 1-1)
2. REMOVE GASKET AND TOP LENS ASSEMBLY. DO NOT DISCARD. (FIG. 1-1)
3. WITH A PHILLIPS HEAD SCREW DRIVER REACH INSIDE THE REFLECTOR FROM THE TOP AND LOOSEN THE THREE SCREWS. ROTATE THE STACK REFLECTOR AND REMOVE FROM CAST LID. (FIG. 1-2)

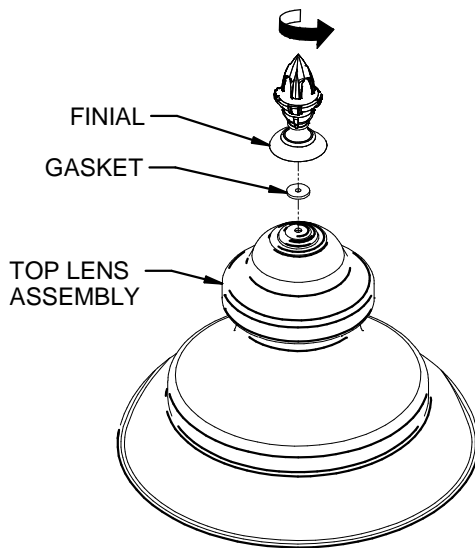


FIG. 1-1

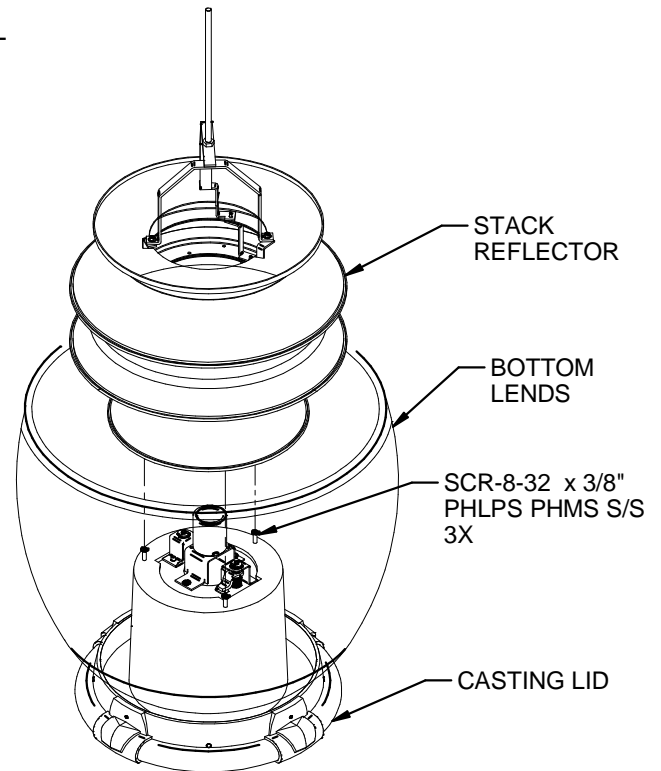
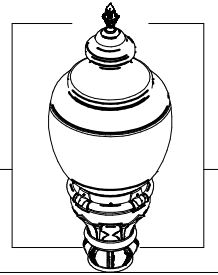


FIG. 1-2



Y-LED Upgrade Kit Installation Guide

Fixture: FGL - Federal Globe Large Scale (FGL) - For SLG/PA3/PA5 Lens

2. REMOVE EXISTING BALLAST ASSEMBLY AND SOCKET ASSEMBLY

1. TILT CAST LID TO THE SIDE BY PULLING LATCH BACKWARD. (FIG. 2-1)
2. DISENGAGE QUICK-DISCONNECT AND PULL APART. (FIG. 2-1)
3. REMOVE SOCKET ASSEMBLY BY TURNING TURN-LATCH COUNTER CLOCKWISE. (FIG. 2-2)
4. REMOVE BALLAST ASSEMBLY. (FIG. 2-3)

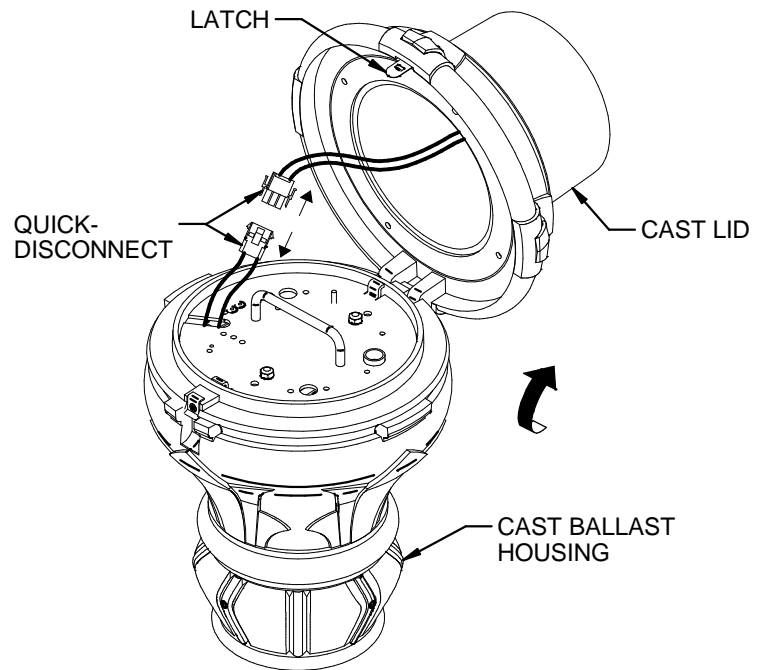


FIG. 2-1

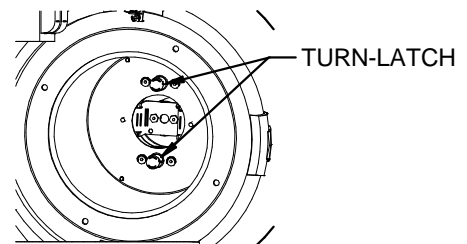


FIG. 2-2

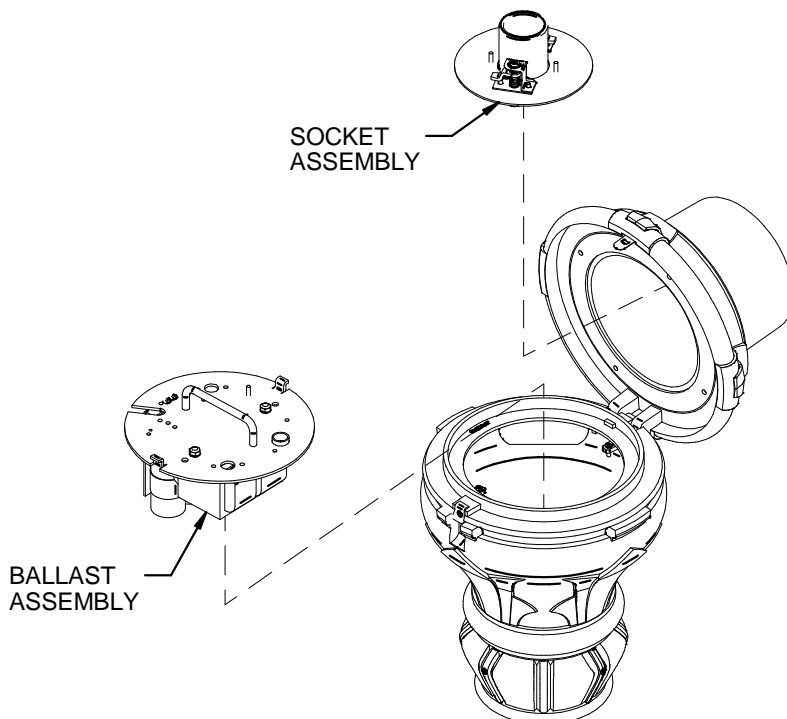
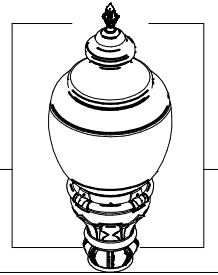


FIG. 2-3



Y-LED Upgrade Kit Installation Guide

Fixture: FGL - Federal Globe Large Scale (FGL) - For SLG/PA3/PA5 Lens

3. INSTALLING 32-LED Y6 MODULE AND LENS

1. INSTALL Y-MODULE TO CAST LID **WITH ARROW ON MOUNTING PLATE POINTING TO LATCH ON CAST LID** USING PROVIDED 8-32 X 3/8" SCREWS. (FIG. 3-1)
ARROW DENOTE STREET SIDE.
2. PLACE TOP LENS ASSEMBLY OVER BOTTOM LENS. (FIG. 3-2)
3. INSTALL GASKET AND FINIAL. (FIG. 3-2)
4. INSTALLATION COMPLETE. (FIG. 3-2)

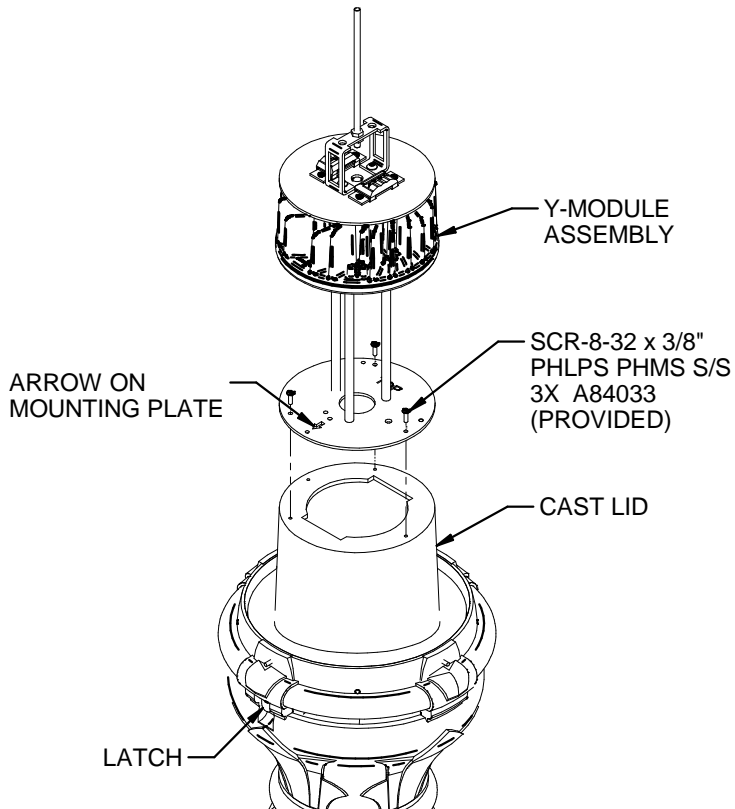


FIG. 3-1

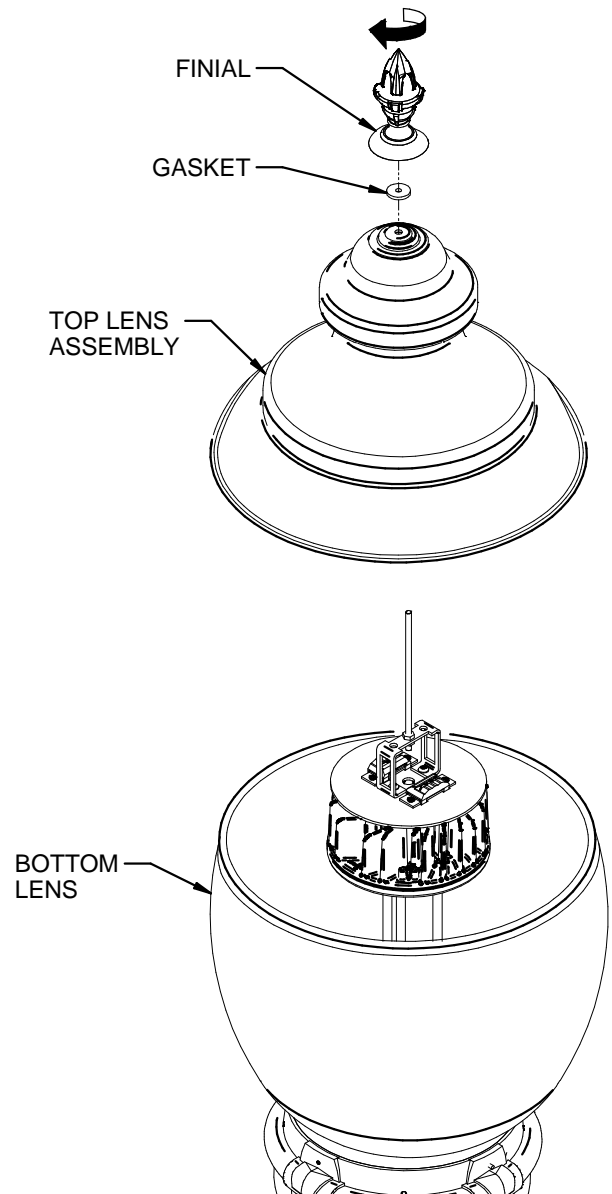
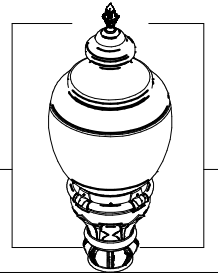


FIG. 3-2



Y-LED Upgrade Kit Installation Guide

Fixture: FGL - Federal Globe Large Scale (FGL) - For SLG/PA3/PA5 Lens

4. INSTALLING DRIVER ASSEMBLY

1. TILT GLOBE ASSEMBLY TO THE SIDE BY PULLING LATCH BACKWARD. (FIG. 4-1)
2. INSTALL DRIVER ASSY. (FIG. 4-1)
3. MAKE WIRE CONNECTIONS BY CONNECTING QUICK DISCONNECT FROM DRIVER ASSY TO SOCKET ASSY AND LIFESHIELD QUICK DISCONNECT. (FIG. 4-2)
3. CLOSE FIXTURE, ENSURE LATCH SNAPS BACK TO ITS ORIGINAL POSITION. (FIG. 4-3)
4. MAKE WIRE CONNECTION FROM INCOMING TO DRIVER ASSY AS FOLLOWS: WHITE TO WHITE, BLACK TO BLACK AND GREEN TO GREEN. (FIG. 4-3)
5. INSTALLATION COMPLETE.

QUICK-DISCONNECT

LIFESHIELD QUICK DISCONNECT

CAST BALLAST HOUSING

FIG. 4-2

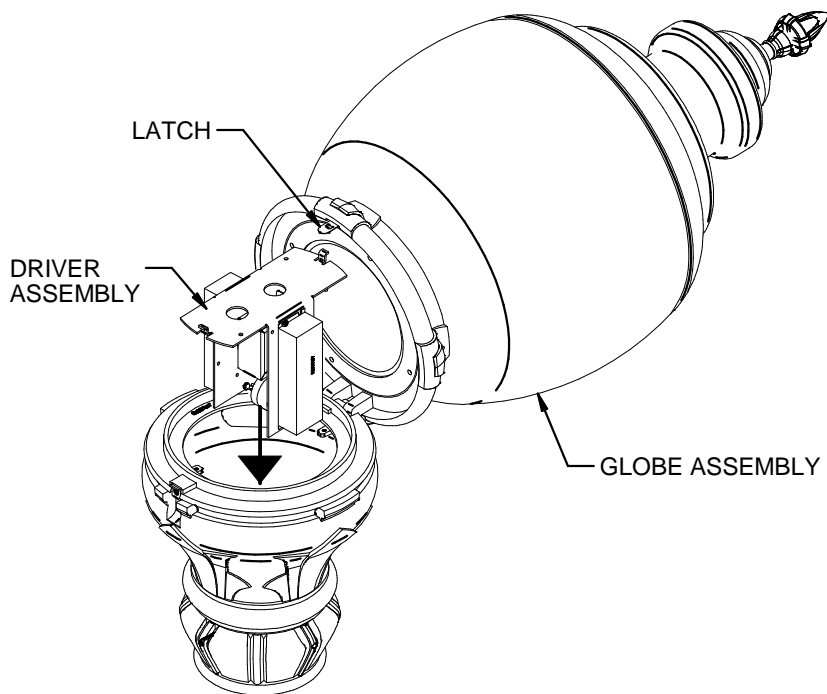


FIG. 4-1

INCOMING

_____	BLACK
_____	WHITE
_____	GREEN

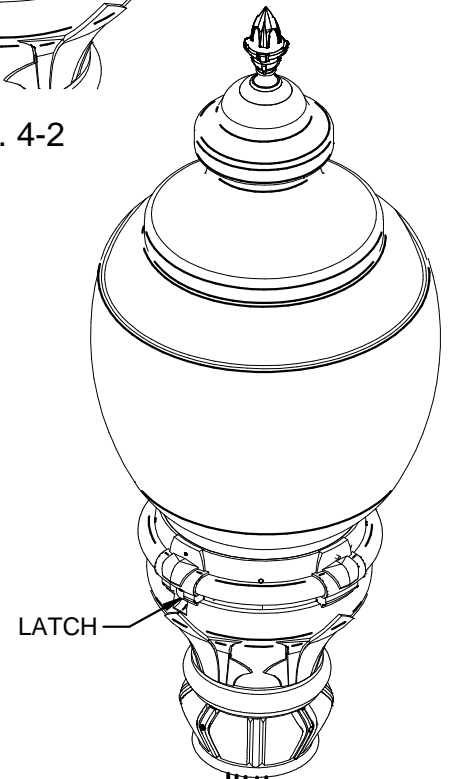
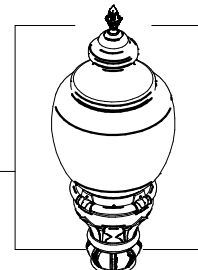


FIG. 4-3

_____	BLACK
_____	WHITE
_____	GREEN
_____	PURPLE
_____	GRAY



Y-LED Upgrade Kit Installation Guide

Fixture: FGL™ - Federal Globe Large Scale (FGL) FOR SAL LENS FOR GR3/ GR5/ BLO

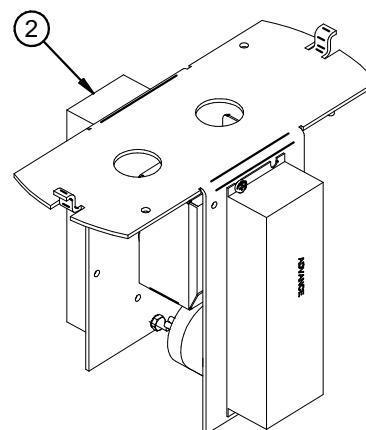
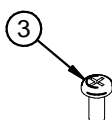
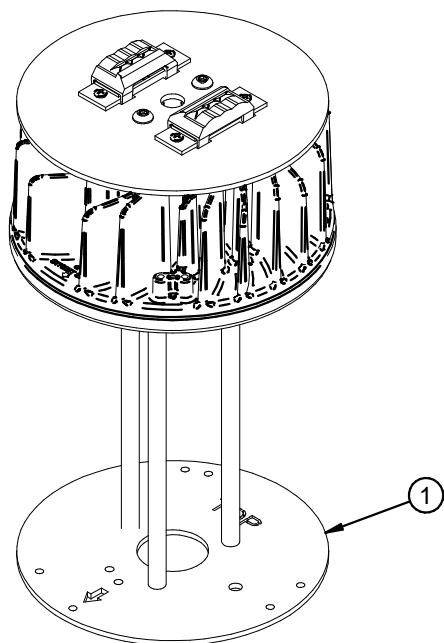


WARNING: Fixtures must be grounded in accordance with local codes or the National Electrical Code. Failure to do so may result in serious personal injury.

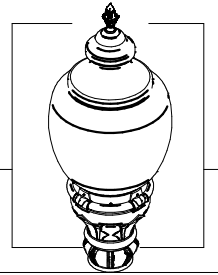
MAINTENANCE: A regularly scheduled maintenance program should be established to retain optimum light output and reduce heat retention. Dusting with a soft, clean, dry cloth is normally sufficient for the optics.

CAUTION: All wiring must be done by a qualified electrician. KEEP THIS SHEET FOR FUTURE REFERENCE.

UPGRADE KIT CONTENTS



PARTS LIST			
ITEM #	QTY	PART #	DESCRIPTION
1	1	93049781	RETROFIT KIT Y-LED FGL SAL LENS
2	1	93049772	RETROFIT KIT Y-LED FGL DRIVER ASSY
3	3	A84033	SCR-8-32 x 3/8" PHLPS PHMS S/S



Y-LED Upgrade Kit Installation Guide

Fixture: FGL™ - Federal Globe Large Scale (FGL) FOR SAL LENS FOR GR3/ GR5/ BLO

1. REMOVE LENS

⚠ TURN OFF ALL POWER TO THE UNIT AND TAKE PROPER SAFETY PRECAUTION. FAILURE TO DO SO MAY RESULT IN SERIOUS PERSONAL INJURY.

1. REMOVE GLOBE ASSEMBLY BY LOOSEN FOUR SET SCREWS. (FIG. 1-1)
2. IF GR3/GR5 OPTION IS PRESENT, REMOVE BY REMOVING THREE 8-32 x 3/8" SCREWS. (FIG. 1-2)

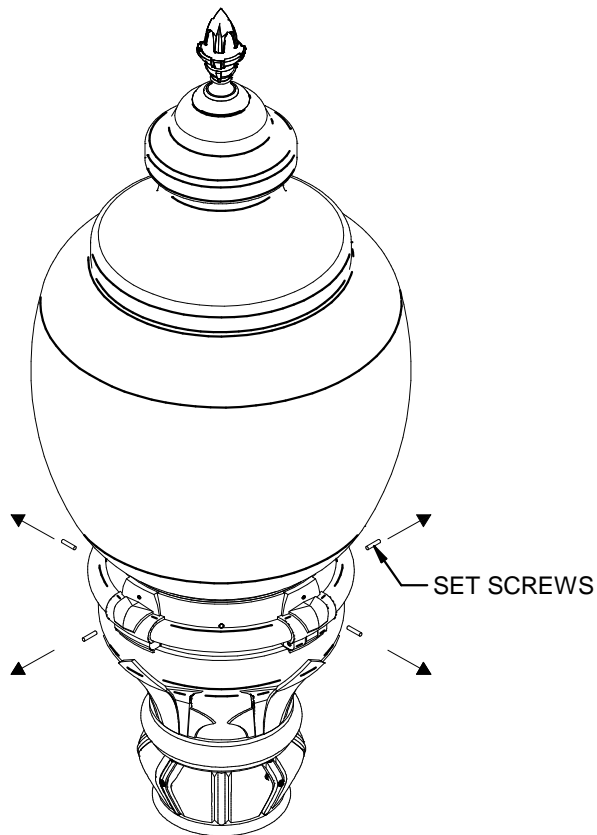


FIG. 1-1

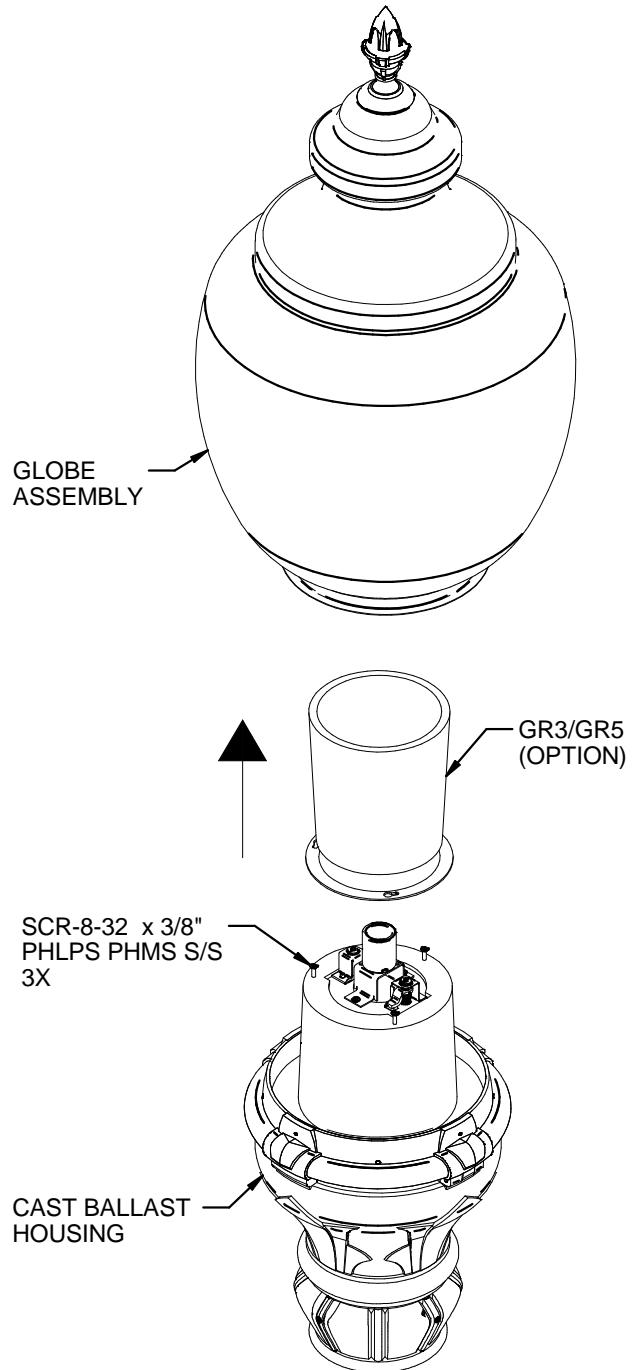
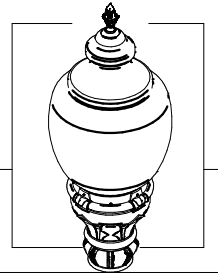


FIG. 1-2



Y-LED Upgrade Kit Installation Guide

Fixture: FGL™ - Federal Globe Large Scale (FGL) FOR SAL LENS FOR GR3/ GR5/ BLO

2. REMOVE EXISTING BALLAST ASSEMBLY AND SOCKET ASSEMBLY

1. TILT CAST LID TO THE SIDE BY PULLING LATCH BACKWARD. (FIG. 2-1)
2. DISENGAGE QUICK-DISCONNECT AND PULL APART. (FIG. 2-1)
3. REMOVE SOCKET ASSEMBLY BY TURNING TURN-LATCH COUNTER CLOCKWISE. (FIG. 2-2)
4. REMOVE BALLAST ASSEMBLY. (FIG. 2-3)

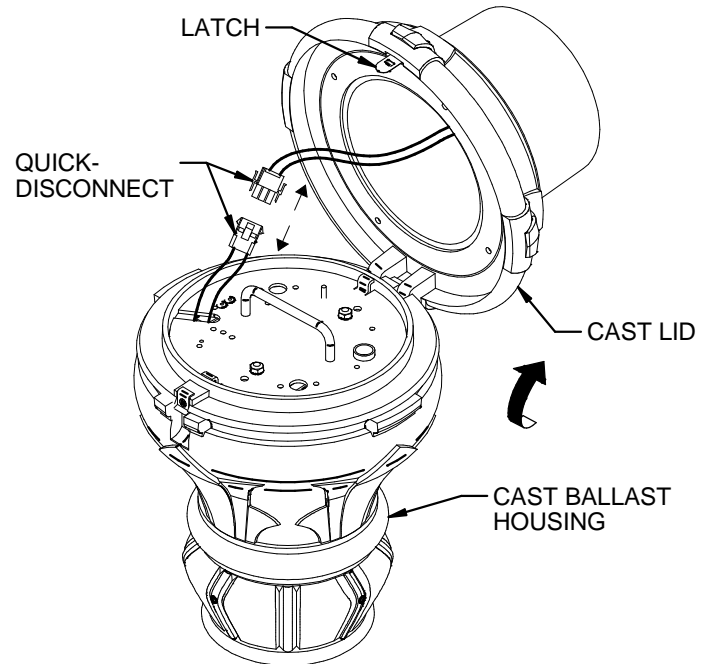


FIG. 2-1

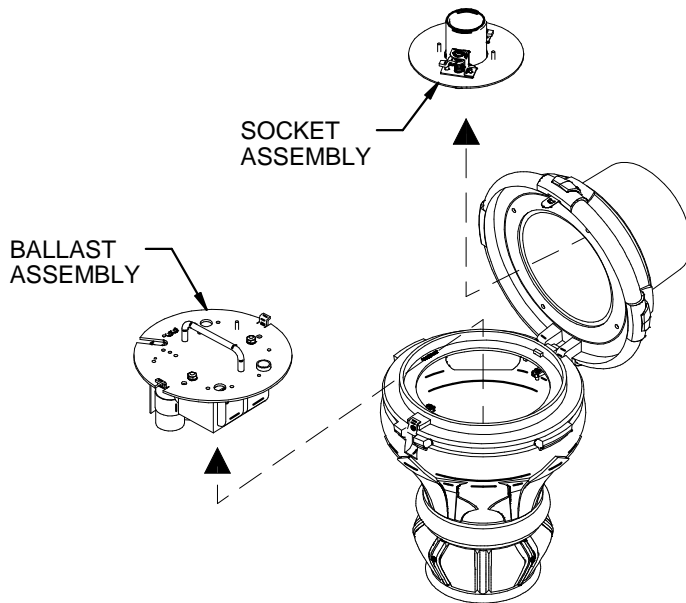


FIG. 2-3

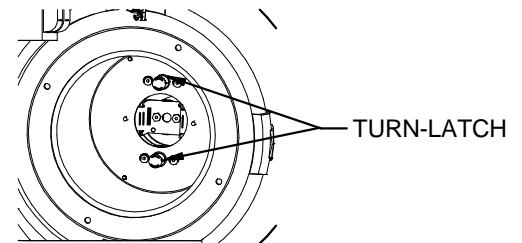
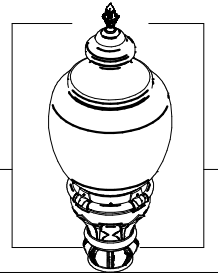


FIG. 2-2



Y-LED Upgrade Kit Installation Guide

Fixture: FGL™ - Federal Globe Large Scale (FGL) FOR SAL LENS FOR GR3/ GR5/ BLO

3. INSTALLING 32-LED Y6 MODULE AND LENS

1. INSTALL Y-MODULE TO CAST LID **WITH ARROW ON MOUNTING PLATE POINTING TO LATCH ON CAST LID** USING PROVIDED 8-32 X 3/8" SCREWS. (FIG. 3-1)
ARROW DENOTE STREET SIDE.
2. PLACE GLOBE ASSEMBLY OVER CAST LID AND SECURE WITH FOUR SET SCREWS. (FIG. 3-2)

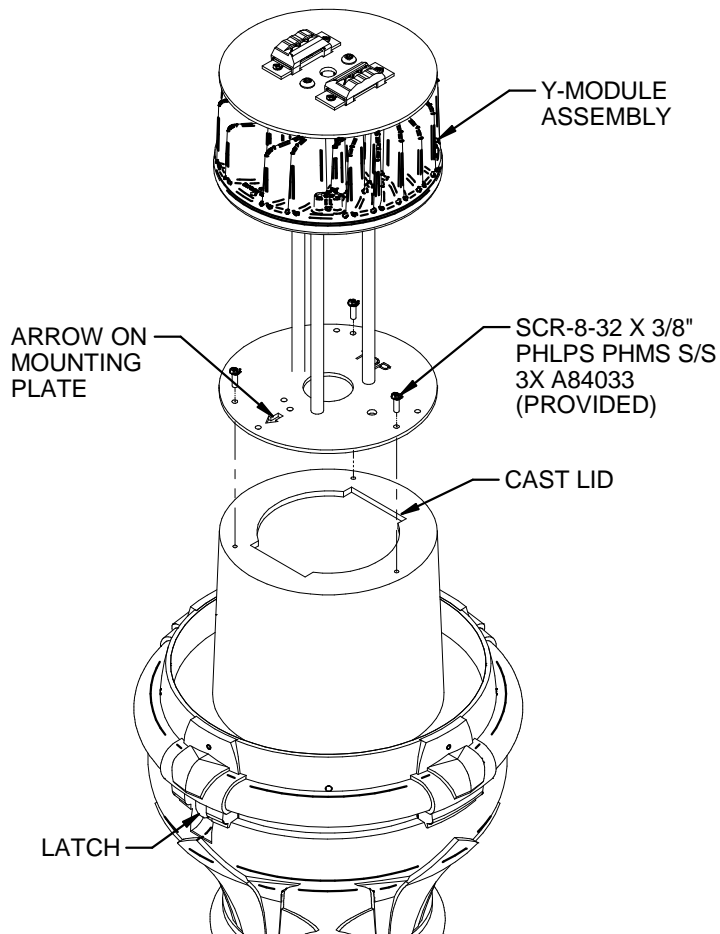


FIG. 3-1

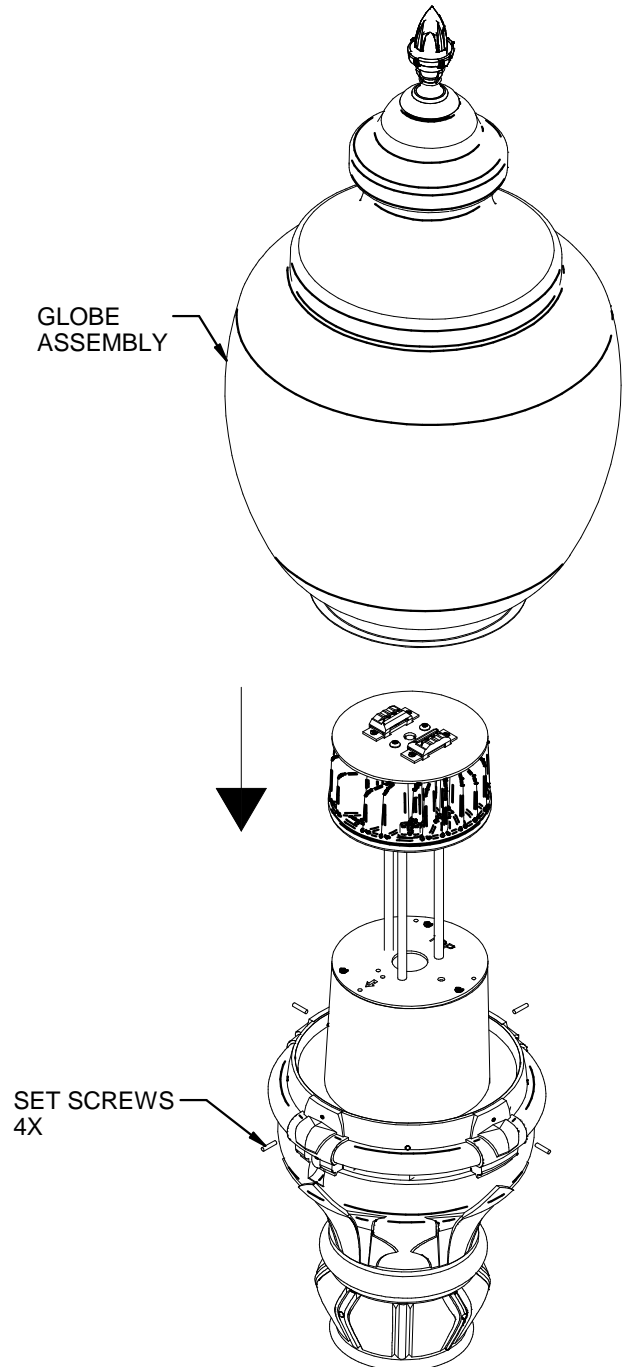
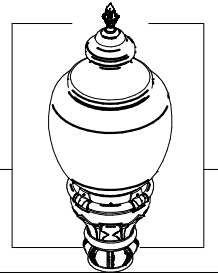


FIG. 3-2



Y-LED Upgrade Kit Installation Guide

Fixture: FGL™ - Federal Globe Large Scale (FGL) FOR SAL LENS FOR GR3/ GR5/ BLO

4. INSTALLING DRIVER ASSEMBLY

1. TILT GLOBE ASSEMBLY TO THE SIDE BY PULLING LATCH BACKWARD. (FIG. 4-1)
2. INSTALL DRIVER ASSY. (FIG. 4-1)
3. MAKE WIRE CONNECTIONS BY CONNECTING QUICK DISCONNECT FROM DRIVER ASSY TO SOCKET ASSY, AND LIFESHIELD QUICK DISCONNECT. (FIG. 4-2)
4. CLOSE FIXTURE, ENSURE LATCH SNAPS BACK TO ITS ORIGINAL POSITION. (FIG. 4-3)
5. MAKE WIRE CONNECTIONS FROM INCOMING TO DRIVER ASSY: WHITE TO WHITE, BLACK TO BLACK AND GREEN TO GREEN. (FIG. 4-3)
6. INSTALLATION COMPLETE.

QUICK-DISCONNECT

LIFESHIELD
QUICK DISCONNECT
CAST BALLAST
HOUSING

FIG. 4-2

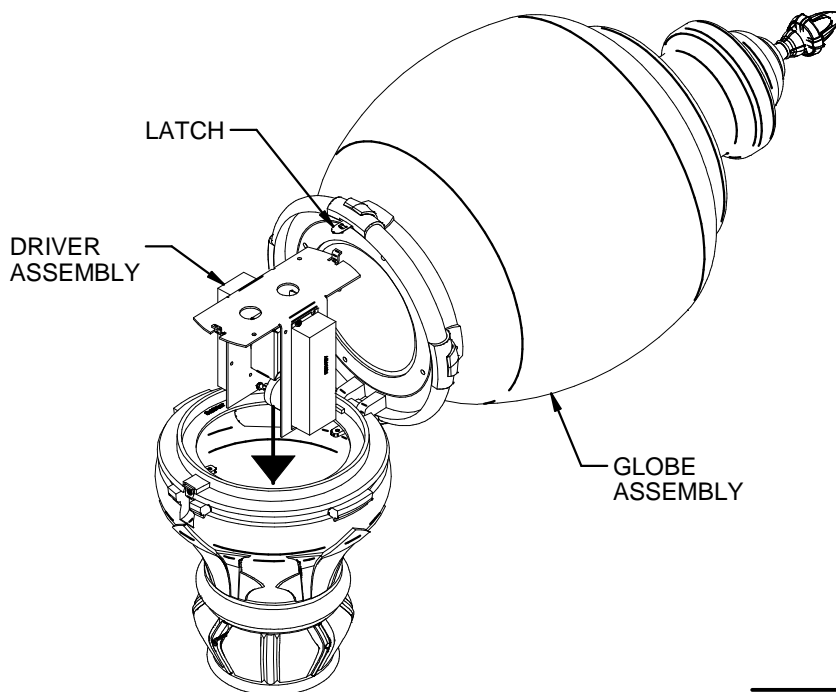


FIG. 4-1

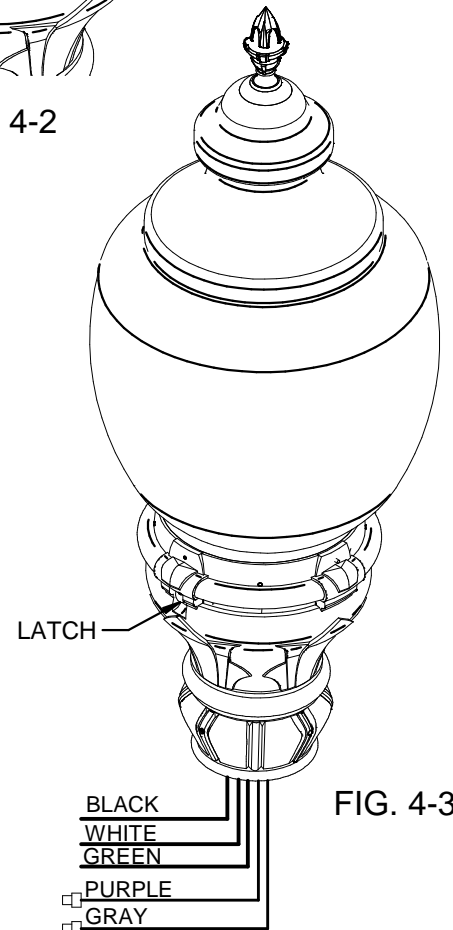


FIG. 4-3

BLACK
WHITE
GREEN

BLACK
WHITE
GREEN
PURPLE
GRAY

REV	DATE	RECORD	DESN	CHCK
A	12/23/13	ECN # 140120013	RC	KC

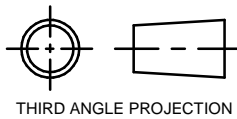
2 UP LED BOARD	
ITEM # 13 P/N	DESCRIPTION
93047432-3012	3000K
93047432-3014	4100K
93047432-3015	5100K

26	80115	16 INCHES	RED 18 AWG WIRE	
25	80104	16 INCHES	BLACK 18 AWG WIRE	
24	A84048	2	NUT 1/4-20 HEX SS	
23	93049759	1	BRACKET FGL/FGS LED MOUNTING	
22	A86002	1	SCR-1/4-20x7 LG. SS THRD.STUD	
21	88552	1	FEMALE 4-PIN QUICK DISCONNECT	
20	88548	1	FEMALE 2-PIN QUICK DISCONNECT	
19	88110	6	Socket, Quick Disconnect	
18	A74011	1	TERMINAL-FEMALE	
17	A74010	1	TERMINAL-MALE	
16	93023746	4	SCR-6-32x1/4 PHH PHMS SS	
15	93049774	2	PLATE LED UPLIGHT	
14	93045602	2	93045602 Pico Emmitter, Acrylic	
13	SEE CHART	2	ASSY-PCB 2LED BOARD 1X2	
12	93049762	1	BRACKET LED UPLIGHT FGL-FGS	
11	A84032	2	SCR-8-32X1/2 PHH PHMS SS	
10	93049763	1	BRACKET LIFESHIELD Y-LED	
9	A74106	2	WIRE TERMINAL	
8	A74026	AR	CABLE TIE GT50S2 BIN ITEM	
7	93017851	2	SCR-4-40x3/16 PHH PH MS SS	
6	93042082-080051	1	SWITCH THERMAL N. O.	
5	A84041	3	SETSCR-1/4-20x1 SS	
4	A84051	5	SCR-1/4-20x1/2 BTN HD CAP SS	
3	A56332-19	3	STANDOFF 3/8"DIA. X 11.5"	
2	93041672	1	93041672-XXXX 32LED Optical Assembly	
1	93046560	1	FGL/FGS LED MOUNTING PLATE	
ITEM	PART #	QTY	DESCRIPTION	NOTES

PARTS LIST

UNSPECIFIED TOLERANCES: INCHES
X.X=±0.1 X.XX=±0.03 X.XXX=±0.010
FRACTIONS=±1/32 ANGULAR TOLERANCE=±1°

DIMENSIONS IN INCHES
DIMENSIONS IN [] IN MM
CONFORMS TO ASME Y14.5M
DO NOT SCALE PRINT



DRAWN: rcarrillo 12/23/13
CHECKED BY: --- --/--/--
ENGINEERING: KC 12/23/13
CATALOG NO. FGS Y-LED



This document contains confidential and proprietary information of Architectural Area Lighting, a division of Hubbell Lighting, Inc. (HLI). Receipt or possession of this document does not convey any rights to reproduce or disclose its contents, or to make, use, or sell anything it may disclose. Reproduction, disclosure, or use of the document or its contents, without the specific written authorization of HLI, may violate the intellectual property rights of HLI.

RETROFIT KIT Y-LED FGS SAL LENS
WITH CCO OPION

MATERIAL:		FINISH:		PART NO. 93049902	
SCALE	SIZE B	DRAWING NO. 93049902		REV. A	SHT 1 1 SHTS



B

B

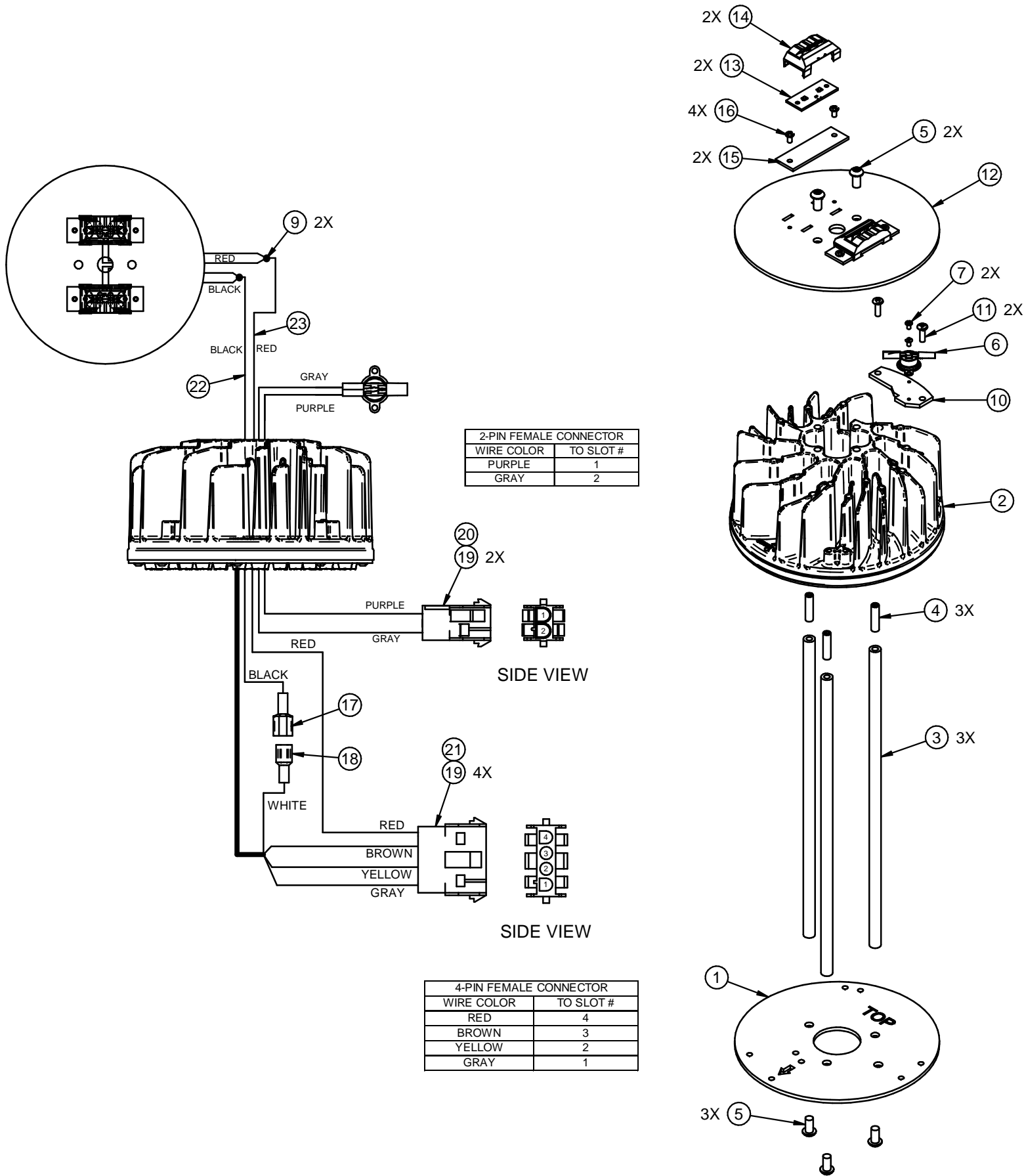
A

A

REV	DATE	RECORD	DESN	CHCK
A	12/20/13	ECN # 140120013	RC	KC

B

B



2 UP LED BOARD	
ITEM # 13 P/N	DESCRIPTION
93047432-3012	3000K
93047432-3014	4100K
93047432-3015	5100K

ITEM	PART #	QTY	DESCRIPTION	NOTES
23	80115	16 INCHES	RED 18 AWG WIRE	
22	80104	16 INCHES	BLACK 18 AWG WIRE	
21	88552	1	FEMALE 4-PIN QUICK DISCONNECT	
20	88548	1	FEMALE 2-PIN QUICK DISCONNECT	
19	88110	6	Socket, Quick Disconnect	
18	A74011	1	TERMINAL-FEMALE	
17	A74010	1	TERMINAL-MALE	
16	93023746	4	SCR-6-32x1/4 PHH PHMS SS	
15	93049774	2	PLATE LED UPLIGHT	
14	93045602	2	93045602 Pico Emmitter, Acrylic	
13	SEE CHART	2	ASSY-PCB 2LED BOARD 1X2	
12	93049762	1	BRACKET LED UPLIGHT FGL-FGS	
11	A84032	2	SCR-8-32X1/2 PHH PHMS SS	
10	93049763	1	BRACKET LIFESHIELD Y-LED	
9	A74106	2	WIRE TERMINAL	
8	A74026	AR	CABLE TIE GT50S2 BIN ITEM	
7	93017851	2	SCR-4-40x3/16 PHH PH MS SS	
6	93042082-080051	1	SWITCH THERMAL N. O.	
5	A84051	5	SCR-1/4-20x1/2 BTN HD CAP SS	
4	A84041	3	SETSCR-1/4-20x1 SS	
3	A56332-19	3	STANDOFF 3/8"DIA. X 11.5"	
2	93041672	1	32LED Optical Assembly	
1	93046560	1	FGL/FGS LED MOUNTING PLATE	

PARTS LIST

UNSPECIFIED TOLERANCES: INCHES
X.X=±0.1 X.XX=±0.03 X.XXX=±0.010
FRACTIONS=±1/32 ANGULAR TOLERANCE=±1°



This document contains confidential and proprietary information of Architectural Area Lighting, a division of Hubbell Lighting, Inc. (HLI). Receipt or possession of this document does not convey any rights to reproduce or disclose its contents, or to make, use, or sell anything it may disclose. Reproduction, disclosure, or use of the document or its contents, without the specific written authorization of HLI, may violate the intellectual property rights of HLI.

RETROFIT KIT Y-LED FGS SAL LENS

DIMENSIONS IN INCHES	DRAWN: rcarrillo 12/20/13
DIMENSIONS IN [] IN MM	CHECKED BY: --- --/--/--
CONFORMS TO ASME Y14.5M	ENGINEERING: KC 12/20/13
DO NOT SCALE PRINT	CATALOG NO. FGS Y-LED
THIRD ANGLE PROJECTION	

MATERIAL:	FINISH:	PART NO. 93049900
SCALE	SIZE B	DRAWING NO. 93049900
REV. A	SHT 1	1 SHTS



A

A

REV	DATE	RECORD	DESN	CHCK
A	12/23/13	ECN # 140120012	RC	KC

2 UP LED BOARD	
ITEM # 13 P/N	DESCRIPTION
93047432-3012	3000K
93047432-3014	4100K
93047432-3015	5100K

26	80115	16 INCHES	RED 18 AWG WIRE	
25	80104	16 INCHES	BLACK 18 AWG WIRE	
24	A84048	2	NUT 1/4-20 HEX SS	
23	93049759	1	BRACKET FGL/FGS LED MOUNTING	
22	A86002-2	1	SCR-1/4-20x10 LG. SS THRD.STUD	PA3 / PA5 LENS
	A86002	1	SCR-1/4-20x7 LG. SS THRD.STUD	SLG LENS
21	88552	1	FEMALE 4-PIN QUICK DISCONNECT	
20	88548	1	FEMALE 2-PIN QUICK DISCONNECT	
19	88110	6	Socket, Quick Disconnect	
18	A74011	1	TERMINAL-FEMALE	
17	A74010	1	TERMINAL-MALE	
16	93023746	4	93023746 SCR. 6-32 x 1/4" PHH PHMS SS	
15	93049774	2	PLATE LED UPLIGHT	
14	93045602	2	93045602 Pico Emmitter, Acrylic	
13	SEE SHART	2	ASSY-PCB 2LED BOARD 1X2	
12	93049762	1	BRACKET LED UPLIGHT FGL-FGS	
11	A84032	2	SCR-8-32X1/2 PHH PHMS SS	
10	93049763	1	BRACKET LIFESHIELD Y-LED	
9	A74106	2	WIRE TERMINAL	
8	A74026	AR	CABLE TIE GT50S2 BIN ITEM	NOT SHOWN
7	93017851	2	SCR-4-40x3/16 PHH PH MS SS	
6	93042082-080051	1	SWITCH THERMAL N. O.	
5	A84041	3	SETSCR-1/4-20x1 SS	
4	A84051	5	SCR-1/4-20x1/2 BTN HD CAP SS	
3	A56332-18	3	STANDOFF 3/8"DIA. X 8"	
2	93041672	1	32-LED OPTICAL ASSEMBLY	
1	93046560	1	FGL/FGS LED MOUNTING PLATE	
ITEM	PART #		DESCRIPTION	NOTES

PARTS LIST

UNSPECIFIED TOLERANCES: INCHES
X.X=±0.1 X.XX=±0.03 X.XXX=±0.010
FRACTIONS=±1/32 ANGULAR TOLERANCE=±1°



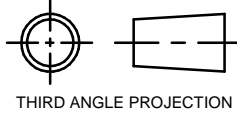
This document contains confidential and proprietary information of Architectural Area Lighting, a division of Hubbell Lighting, Inc. (HLI). Receipt or possession of this document does not convey any rights to reproduce or disclose its contents, or to make, use, or sell anything it may disclose. Reproduction, disclosure, or use of the document or its contents, without the specific written authorization of HLI, may violate the intellectual property rights of HLI.

RETROFIT KIT Y-LED FGL SLG-PA3-PA5 LENS

DIMENSIONS IN INCHES
DIMENSIONS IN [] IN MM
CONFORMS TO ASME Y14.5M
DO NOT SCALE PRINT

DRAWN: rcarrillo 12/23/13
CHECKED BY: --- --/--/--
ENGINEERING: KC 12/23/13
CATALOG NO. FGL Y-LED

MATERIAL:		FINISH:		PART NO. 93049782	
SCALE	SIZE B	DRAWING NO. 93049782	REV. A	SHT 1 1 SHTS	

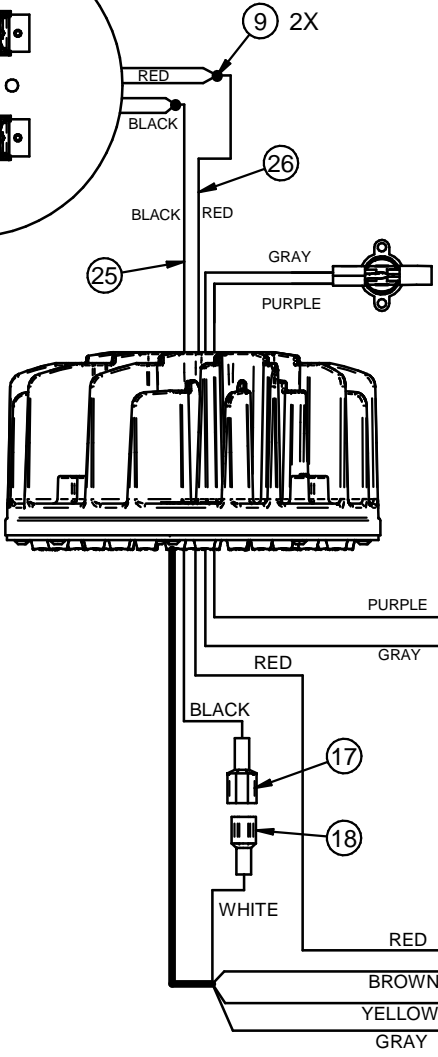
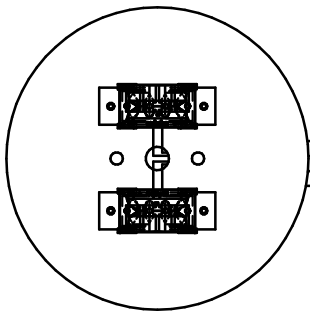


B

B

A

A

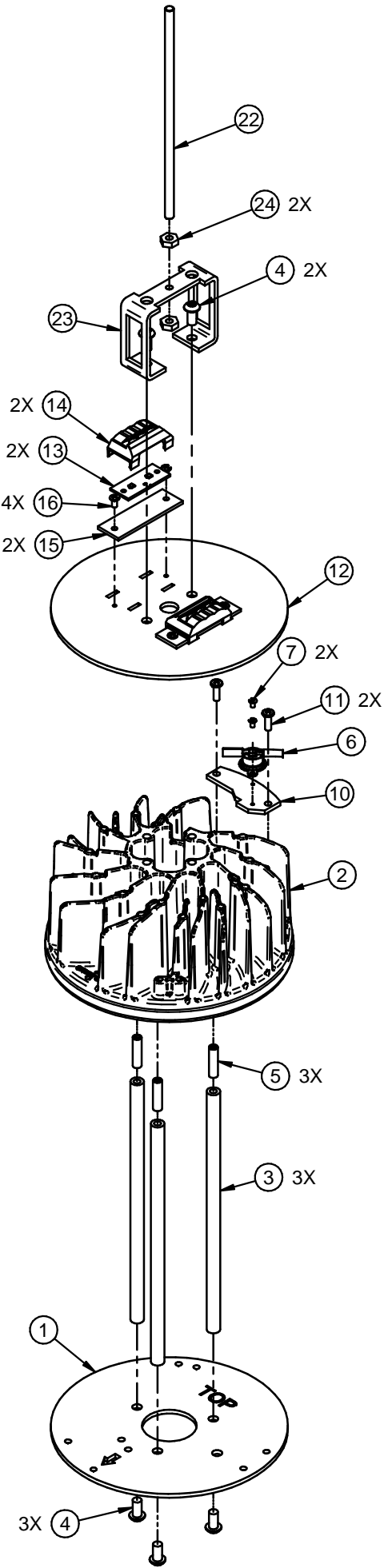


2-PIN FEMALE CONNECTOR	
WIRE COLOR	TO SLOT #
PURPLE	1
GRAY	2

SIDE VIEW

4-PIN FEMALE CONNECTOR	
WIRE COLOR	TO SLOT #
RED	4
BROWN	3
YELLOW	2
GRAY	1

SIDE VIEW



REV	DATE	RECORD	DESN	CHCK
A	12/20/13	ECN # 140120012	RC	KC

B

B

2 UP LED BOARD	
ITEM # 13 P/N	DESCRIPTION
93047432-3012	3000K
93047432-3014	4100K
93047432-3015	5100K

23	80115	16 INCHES	RED 18 AWG WIRE	
22	80104	16 INCHES	BLACK 18 AWG WIRE	
21	88552	1	FEMALE 4-PIN QUICK DISCONNECT	
20	88548	1	FEMALE 2-PIN QUICK DISCONNECT	
19	88110	6	Socket, Quick Disconnect	
18	A74011	1	TERMINAL-FEMALE	
17	A74010	1	TERMINAL-MALE	
16	93023746	4	93023746 SCR. 6-32 x 1/4" PHH PHMS SS	
15	93049774	2	PLATE LED UPLIGHT	
14	93045602	2	93045602 Pico Emmitter, Acrylic	
13	SEE SHART	2	ASSY-PCB 2LED BOARD 1X2	
12	93049762	1	BRACKET LED UPLIGHT FGL-FGS	
11	A84032	2	SCR-8-32X1/2 PHH PHMS SS	
10	93049763	1	BRACKET LIFESHIELD Y-LED	
9	A74106	2	WIRE TERMINAL	NOT SHOWN
8	A74026	AR	CABLE TIE GT50S2 BIN ITEM	NOT SHOWN
7	93017851	2	SCR-4-40x3/16 PHH PH MS SS	
6	93042082-080051	1	SWITCH THERMAL N. O.	
5	A84051	5	SCR-1/4-20x1/2 BTN HD CAP SS	
4	A84041	3	SETSCR-1/4-20x1 SS	
3	A56332-18	3	STANDOFF 3/8"DIA. X 8"	
2	93041672	1	32-LED OPTICAL ASSEMBLY	
1	93046560	1	FGL/FGS LED MOUNTING PLATE	
ITEM	PART #	QTY	DESCRIPTION	NOTES

PARTS LIST

UNSPECIFIED TOLERANCES: INCHES
X.X=±0.1 X.XX=±0.03 X.XXX=±0.010
FRACTIONS=±1/32 ANGULAR TOLERANCE=±1°



This document contains confidential and proprietary information of Architectural Area Lighting, a division of Hubbell Lighting, Inc. (HLI). Receipt or possession of this document does not convey any rights to reproduce or disclose its contents, or to make, use, or sell anything it may disclose. Reproduction, disclosure, or use of the document or its contents, without the specific written authorization of HLI, may violate the intellectual property rights of HLI.

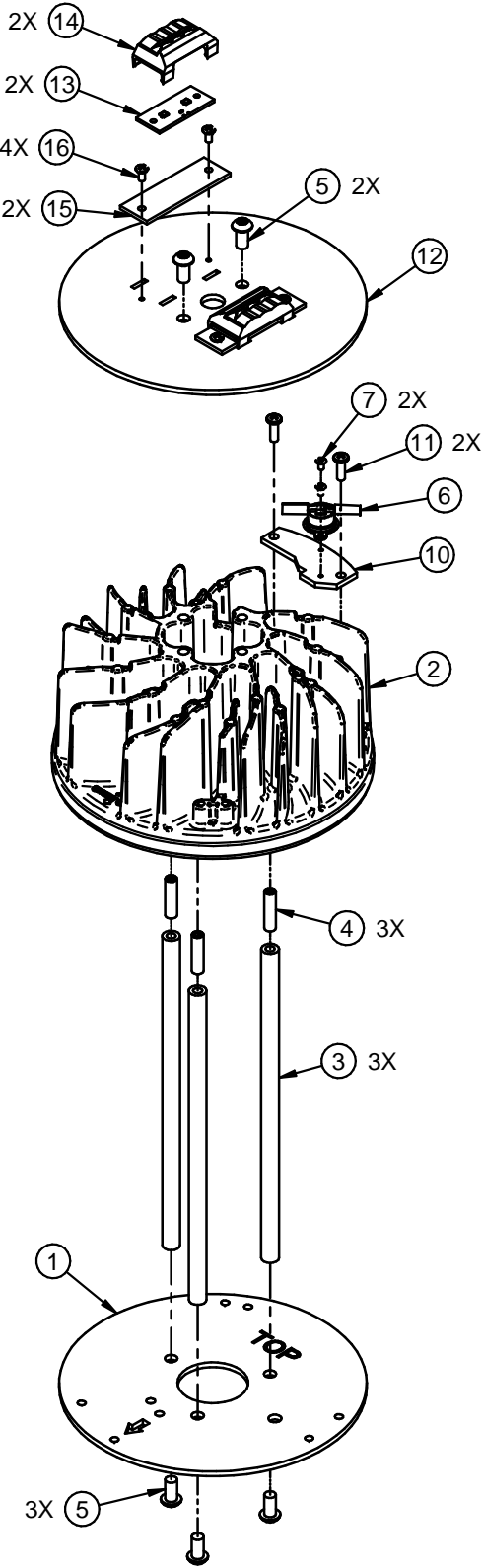
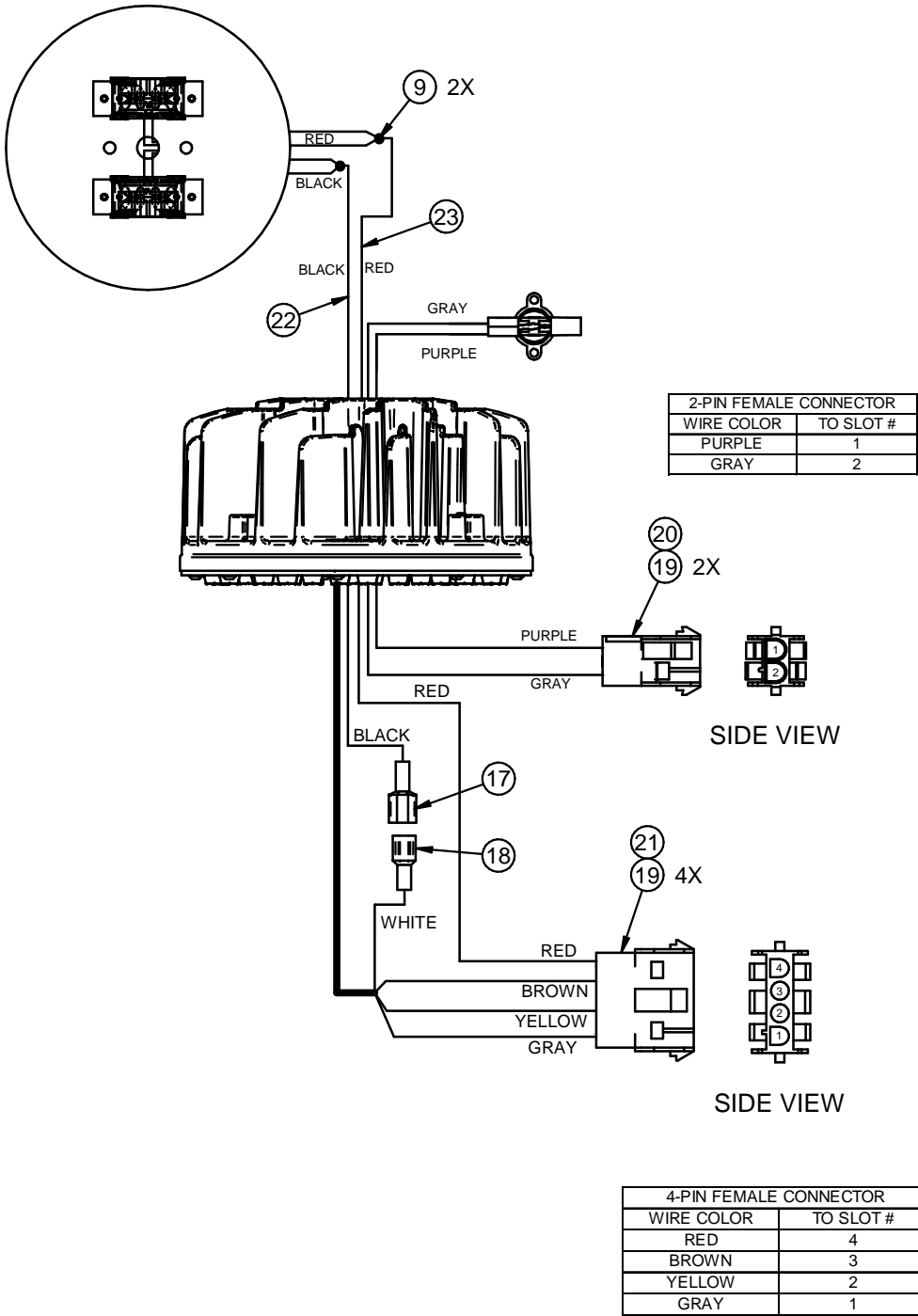
DIMENSIONS IN INCHES	DRAWN: rcarrillo 12/20/13
DIMENSIONS IN [] IN MM	CHECKED BY: --- --/--/--
CONFORMS TO ASME Y14.5M	ENGINEERING: KC 12/20/13
DO NOT SCALE PRINT	CATALOG NO. FGL Y-LED
THIRD ANGLE PROJECTION	

RETROFIT KIT Y-LED FGL SAL LENS

MATERIAL:		FINISH:		PART NO. 93049781	
SCALE	SIZE B	DRAWING NO. 93049781	REV. A	SHT 1 1 SHTS	

A

A



Installation Instructions

Fixture: FEDERAL GLOBE™ (FGL/ FGS) FOR LED

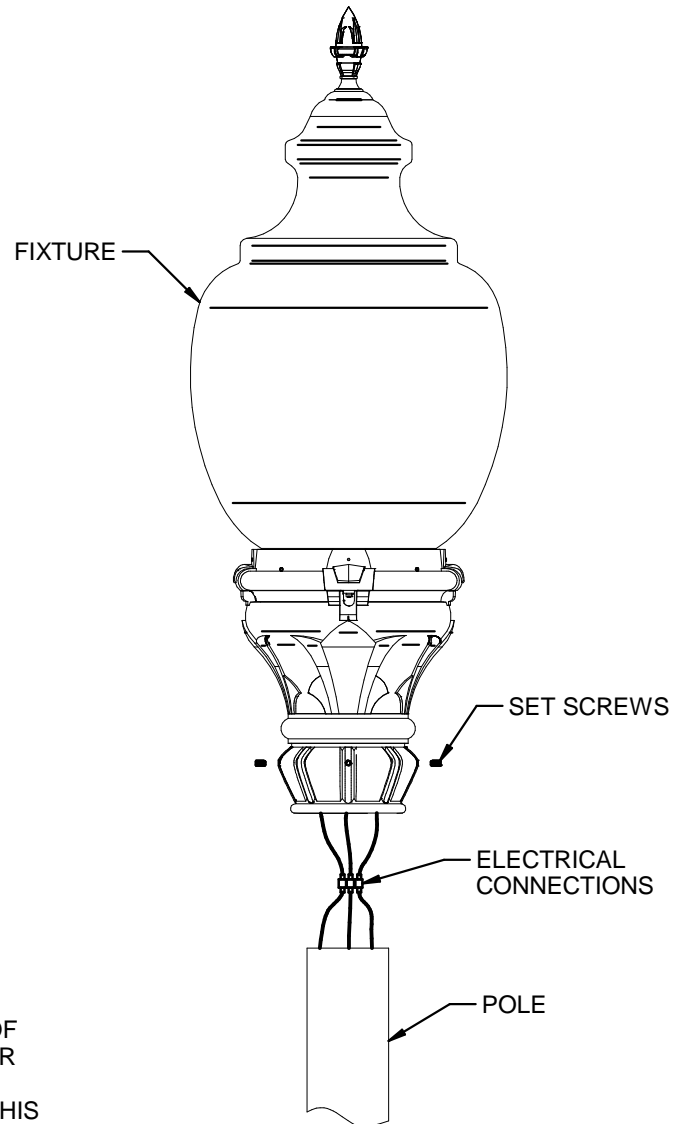


WARNING: Fixtures must be grounded in accordance with local codes or the National Electrical Code. Failure to do so may result in serious personal injury.

MAINTENANCE: A regularly scheduled maintenance program should be established to retain optimum light output and reduce heat retention. Dusting with a soft, clean, dry cloth is normally sufficient for the optics.

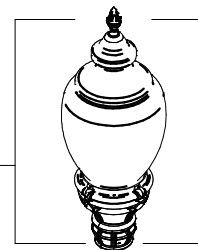
CAUTION: All wiring must be done by a qualified electrician. KEEP THIS SHEET FOR FUTURE REFERENCE.

1. Be sure all power is **OFF**.
2. Make wire connections from incoming supply to fixture as shown. (White to White, Black to Black and Green to Green) (Note: fixture must be grounded to incoming equipment ground supply.)
3. Slip fixture over pole top or tenon. Secure with four (4) supplied stainless steel set screws.
4. Turn power ON.



WARNING:

THIS PRODUCT CONTAINS CHEMICALS KNOWN TO THE STATE OF CALIFORNIA TO CAUSE CANCER, BIRTH DEFECTS, AND/OR OTHER REPRODUCTIVE HARM. THOROUGHLY WASH HANDS AFTER INSTALLING, HANDLING, CLEANING OR OTHERWISE TOUCHING THIS PRODUCT.



Y-LED Upgrade Kit Installation Guide

Fixture: FGS™ Federal Globe Small Scale (FGS) For SAL Lens With CCO Optical System

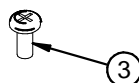
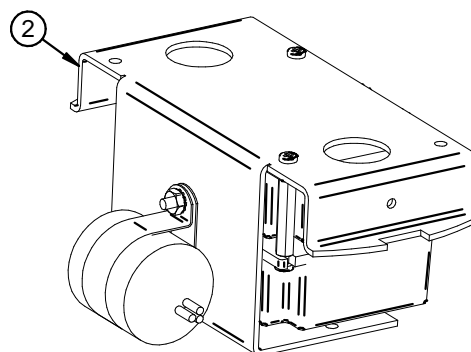
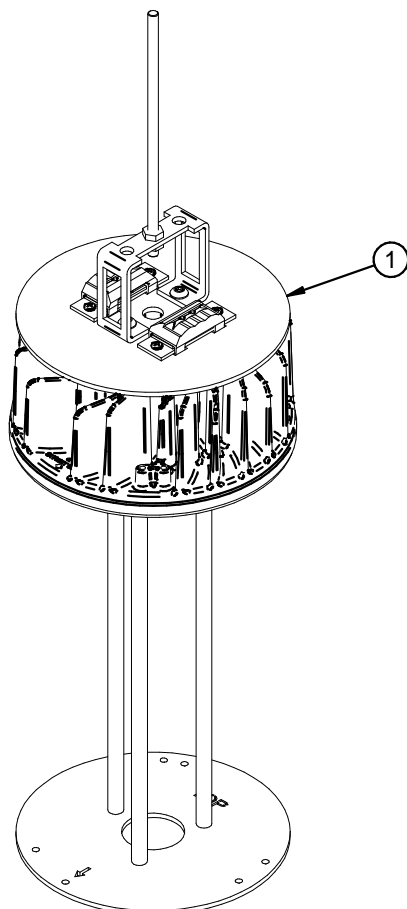


WARNING: Fixtures must be grounded in accordance with local codes or the National Electrical Code. Failure to do so may result in serious personal injury.

MAINTENANCE: A regularly scheduled maintenance program should be established to retain optimum light output and reduce heat retention. Dusting with a soft, clean, dry cloth is normally sufficient for the optics.

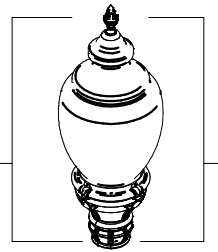
CAUTION: All wiring must be done by a qualified electrician. KEEP THIS SHEET FOR FUTURE REFERENCE.

UPGRADE KIT CONTENTS



PARTS LIST

ITEM #	QTY	PART #	DESCRIPTION
1	1	93049902	RETROFIT KIT Y-LED SAL LENS WITH CCO OPTION
2	1	93049901	RETROFIT KIT Y-LED DRIVER ASSY
3	3	A84033	SCR-8-32 x 3/8" PHLPS PHMS S/S



Y-LED Upgrade Kit Installation Guide

Fixture: FGS™ Federal Globe Small Scale (FGS) For SAL Lens With CCO Optical System

1. REMOVE LENS

⚠ TURN OFF ALL POWER TO THE UNIT AND TAKE PROPER SAFETY PRECAUTION. FAILURE TO DO SO MAY RESULT IN SERIOUS PERSONAL INJURY.

1. REMOVE FINIAL BY TURNING IT COUNTER CLOCKWISE. (FIG. 1-1)
2. REMOVE GASKET AND TOP LENS ASSEMBLY. DO NOT DISCARD. (FIG. 1-1)
3. WITH A PHILLIPS HEAD SCREW DRIVER LOOSEN THREE SCREWS AND REMOVE CCO OPTICAL SYSTEM FROM CAST LID. (FIG. 1-2)

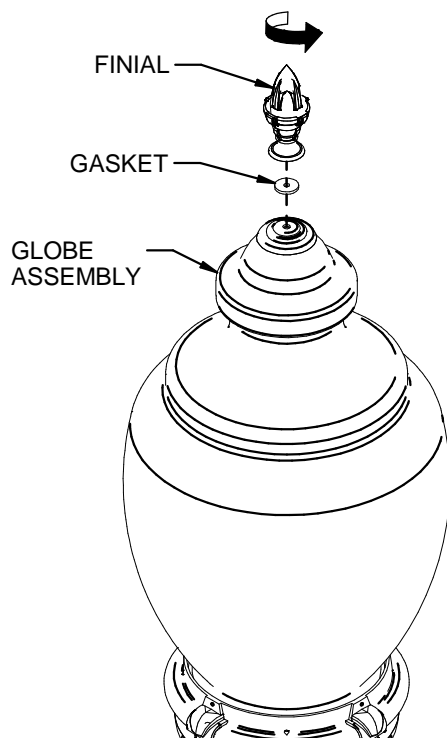


FIG. 1-1

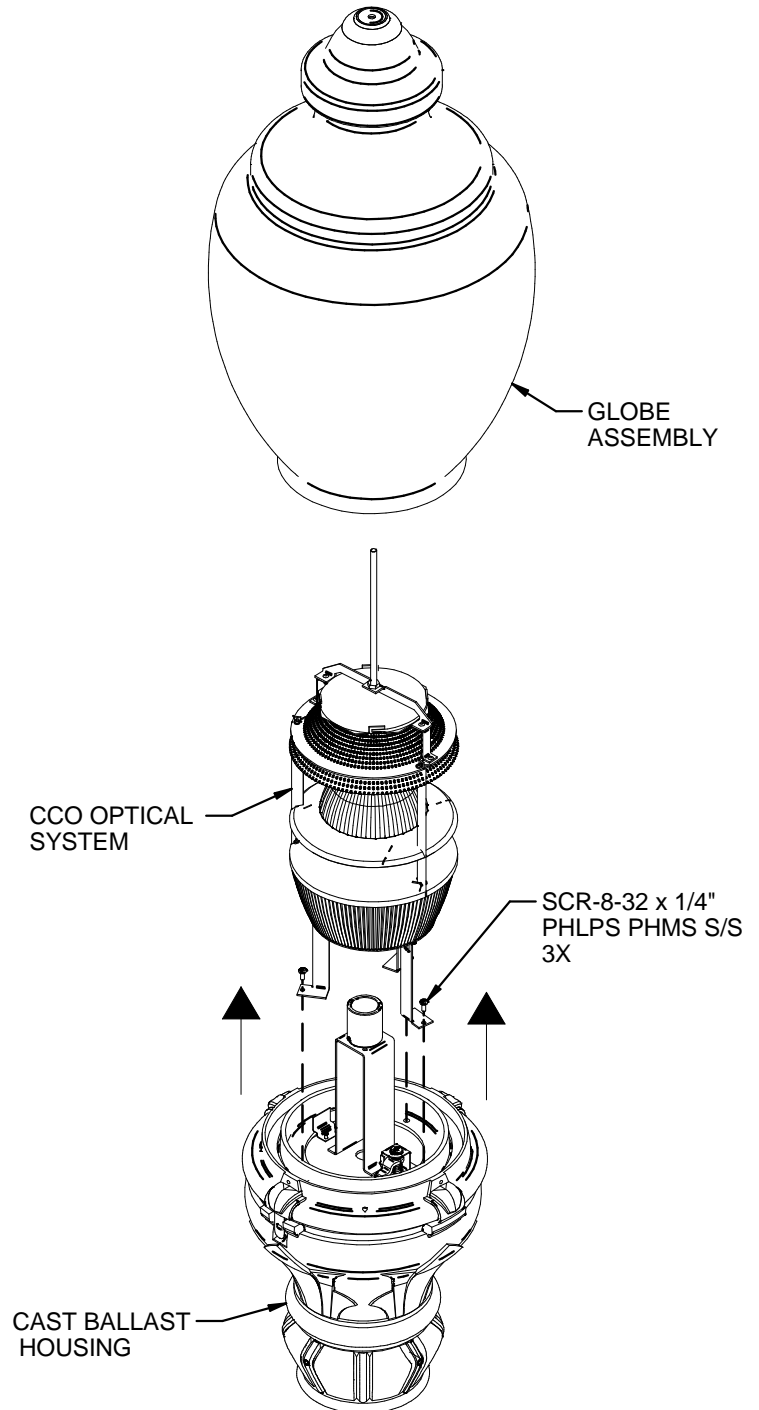
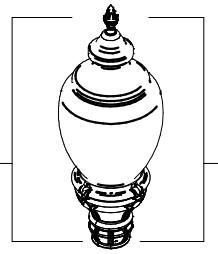


FIG. 1-2



Y-LED Upgrade Kit Installation Guide

Fixture: FGS™ Federal Globe Small Scale (FGS) For SAL Lens With CCO Optical System

2. REMOVE EXISTING BALLAST ASSEMBLY AND SOCKET ASSEMBLY

1. TILT CAST LID TO THE SIDE BY PULLING LATCH BACKWARD. (FIG. 2-1)
2. DISENGAGE QUICK-DISCONNECT AND PULL APART. (FIG. 2-1)
3. REMOVE SOCKET ASSEMBLY BY TURNING TURN-LATCH COUNTER CLOCKWISE. (FIG. 2-2)
4. REMOVE BALLAST ASSEMBLY. (FIG. 2-3)

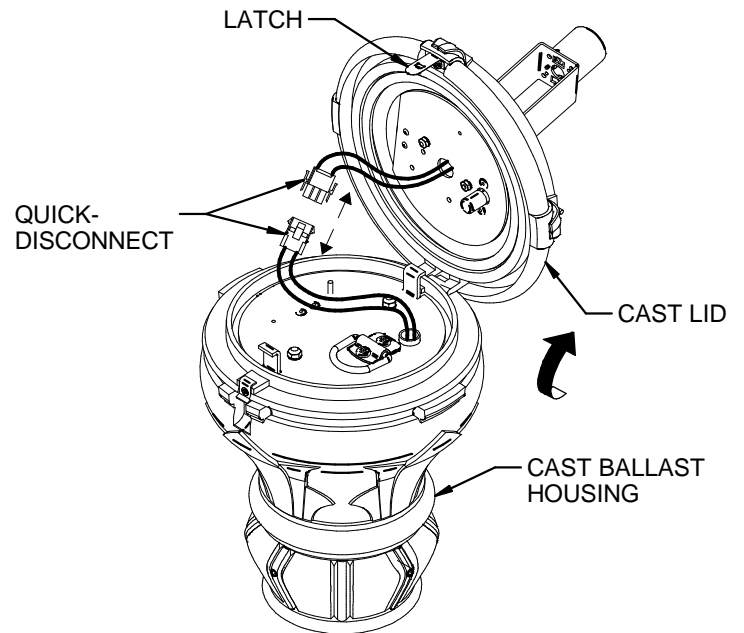


FIG. 2-1

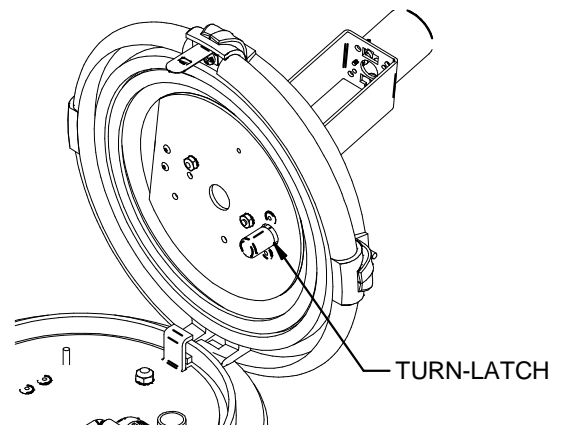


FIG. 2-2

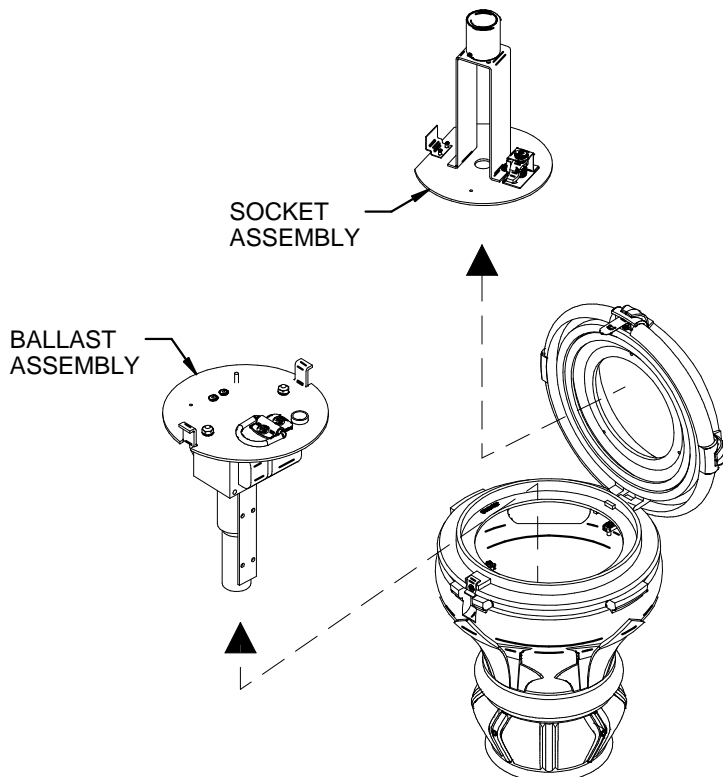
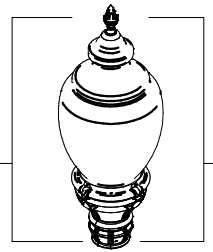


FIG. 2-3



Y-LED Upgrade Kit Installation Guide

Fixture: FGS™ Federal Globe Small Scale (FGS) For SAL Lens With CCO Optical System

3. INSTALLING 32-LED Y6 MODULE AND LENS

1. INSTALL Y-MODULE TO CAST LID **WITH**
ARROW ON MOUNTING PLATE POINTING TO
LATCH ON CAST LID USING PROVIDED
8-32 X 3/8" SCREWS. (FIG. 3-1)
ARROW DENOTE STREET SIDE.
2. PLACE GLOBE ASSEMBLY OVER CAST LID.
(FIG. 3-2)
3. INSTALL GASKET AND FINIAL. (FIG. 3-2)
4. INSTALLATION COMPLETE. (FIG. 3-2)

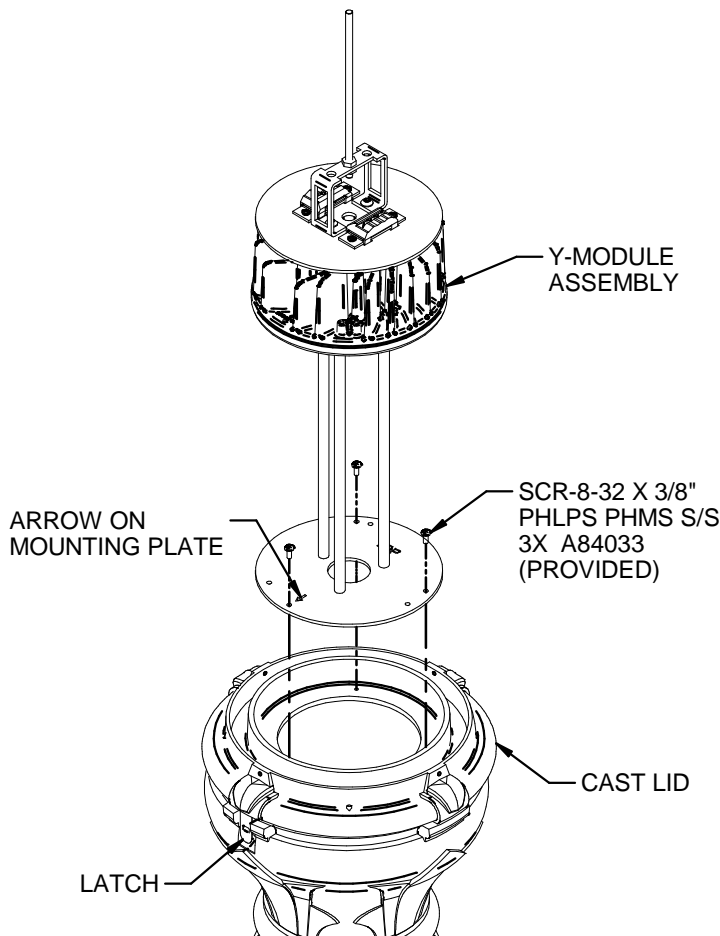


FIG. 3-1

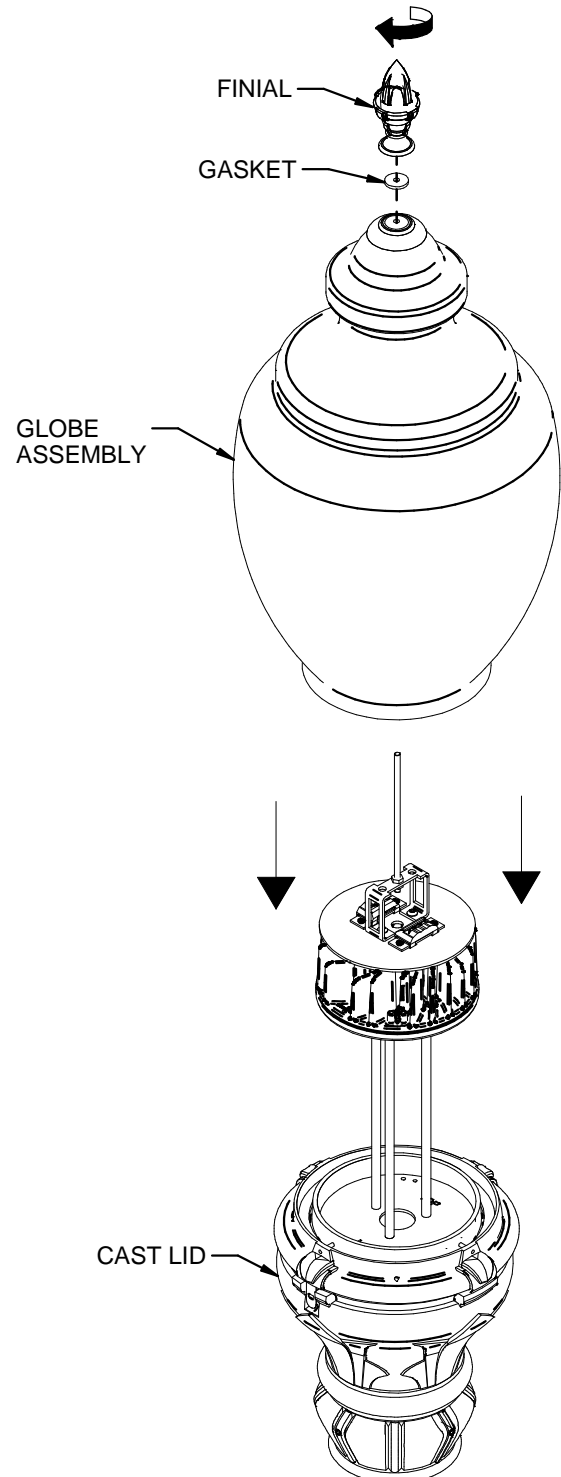
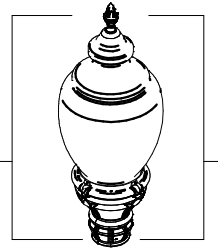


FIG. 3-2



Y-LED Upgrade Kit Installation Guide

Fixture: FGS™ Federal Globe Small Scale (FGS) For SAL Lens With CCO Optical System

4. INSTALLING DRIVER ASSEMBLY

1. TILT GLOBE ASSEMBLY TO THE SIDE BY PULLING LATCH BACKWARD. (FIG. 4-1)
2. INSTALL DRIVER ASSY. (FIG. 4-1)
3. MAKE WIRE CONNECTIONS BY CONNECTING QUICK DISCONNECT FROM DRIVER ASSY TO SOCKET ASSY AND LIFESHIELD QUICK DISCONNECT. (FIG. 4-2)
4. CLOSE FIXTURE, ENSURE LATCH SNAPS BACK TO ITS ORIGINAL POSITION. (FIG. 4-3)
5. MAKE WIRE CONNECTIONS FROM INCOMING TO DRIVER ASSY: WHITE TO WHITE, BLACK TO BLACK AND GREEN TO GREEN. (FIG. 4-3)
6. INSTALLATION COMPLETE.

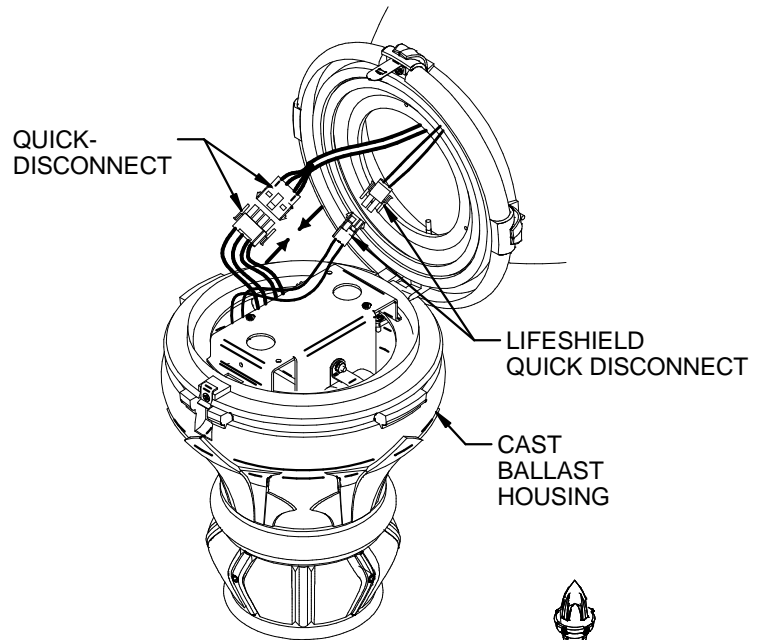


FIG. 4-2

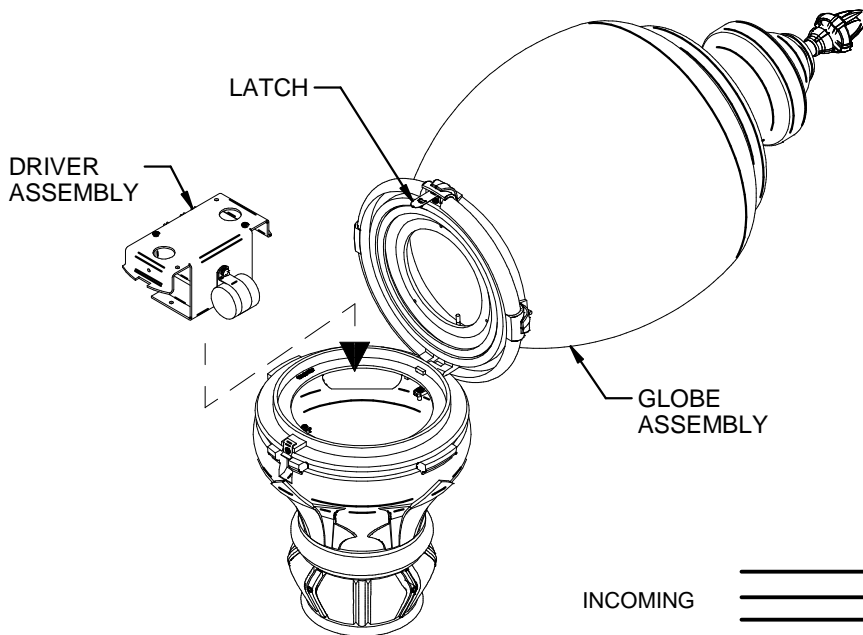


FIG. 4-1

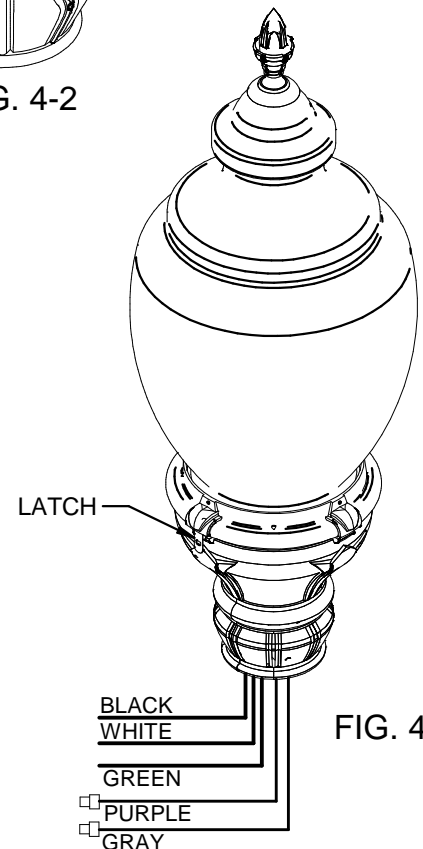
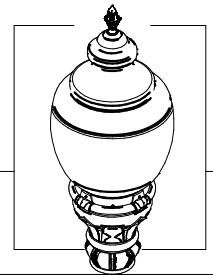


FIG. 4-3



Y-LED Upgrade Kit Installation Guide

Fixture: FGL - Federal Globe Large Scale (FGL) - For SLG/PA3/PA5 Lens

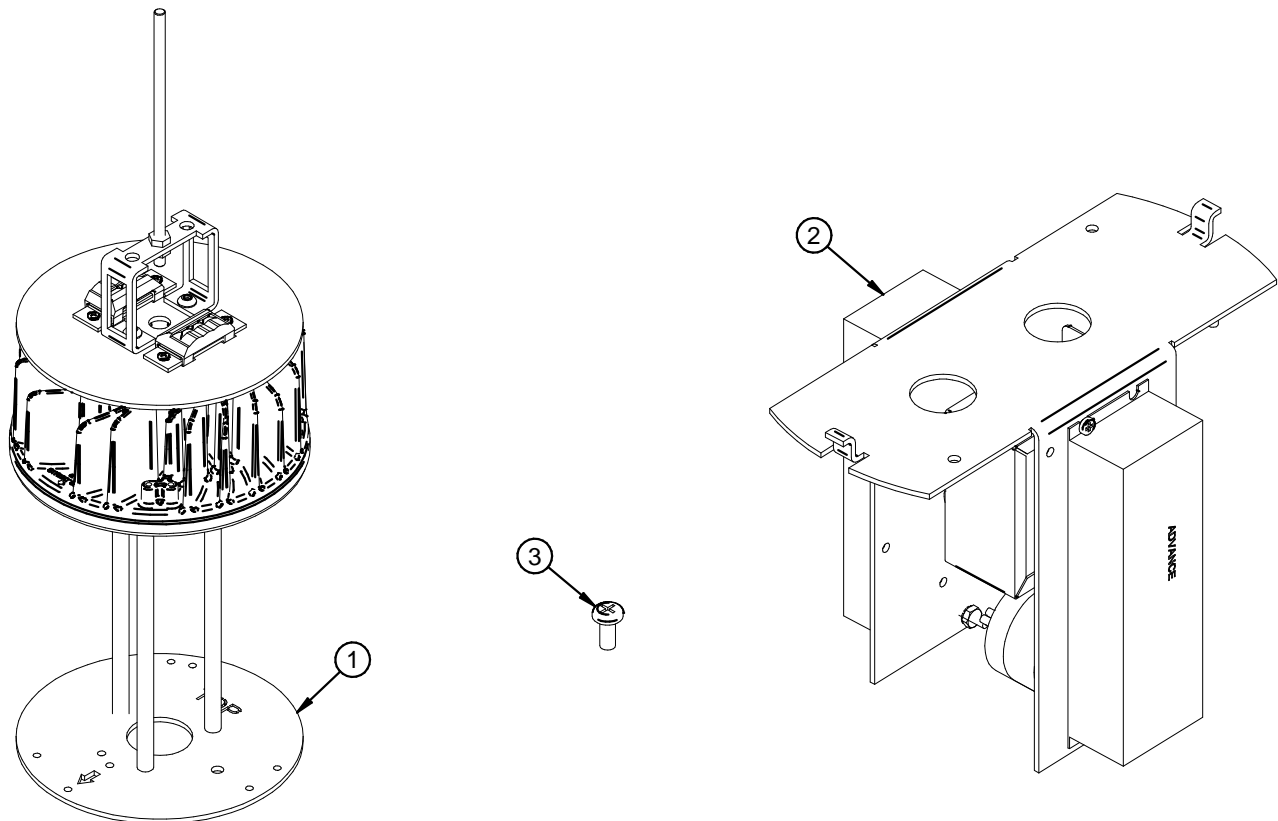


WARNING: Fixtures must be grounded in accordance with local codes or the National Electrical Code. Failure to do so may result in serious personal injury.

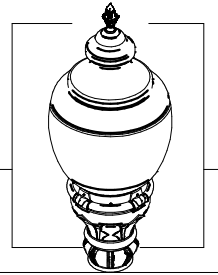
MAINTENANCE: A regularly scheduled maintenance program should be established to retain optimum light output and reduce heat retention. Dusting with a soft, clean, dry cloth is normally sufficient for the optics.

CAUTION: All wiring must be done by a qualified electrician. KEEP THIS SHEET FOR FUTURE REFERENCE.

UPGRADE KIT CONTENTS



PARTS LIST			
ITEM #	QTY	PART #	DESCRIPTION
1	1	93049782	RETROFIT KIT Y-LED FGL SLG-PA3-PA5 LENS
2	1	93049772	RETROFIT KIT Y-LED FGL DRIVER ASSY
3	3	A84033	SCR-8-32 x 3/8" PHLPS PHMS S/S



Y-LED Upgrade Kit Installation Guide

Fixture: FGL - Federal Globe Large Scale (FGL) - For SLG/PA3/PA5 Lens

1. REMOVE EXISTING REFLECTOR ASSEMBLY

⚠ TURN OFF ALL POWER TO THE UNIT AND TAKE PROPER SAFETY PRECAUTION. FAILURE TO DO SO MAY RESULT IN SERIOUS PERSONAL INJURY.

1. REMOVE FINIAL BY TURNING IT COUNTER CLOCKWISE. (FIG. 1-1)
2. REMOVE GASKET AND TOP LENS ASSEMBLY. DO NOT DISCARD. (FIG. 1-1)
3. WITH A PHILLIPS HEAD SCREW DRIVER REACH INSIDE THE REFLECTOR FROM THE TOP AND LOOSEN THE THREE SCREWS. ROTATE THE STACK REFLECTOR AND REMOVE FROM CAST LID. (FIG. 1-2)

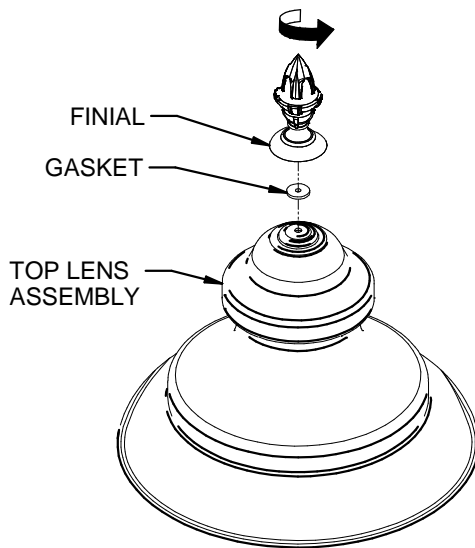


FIG. 1-1

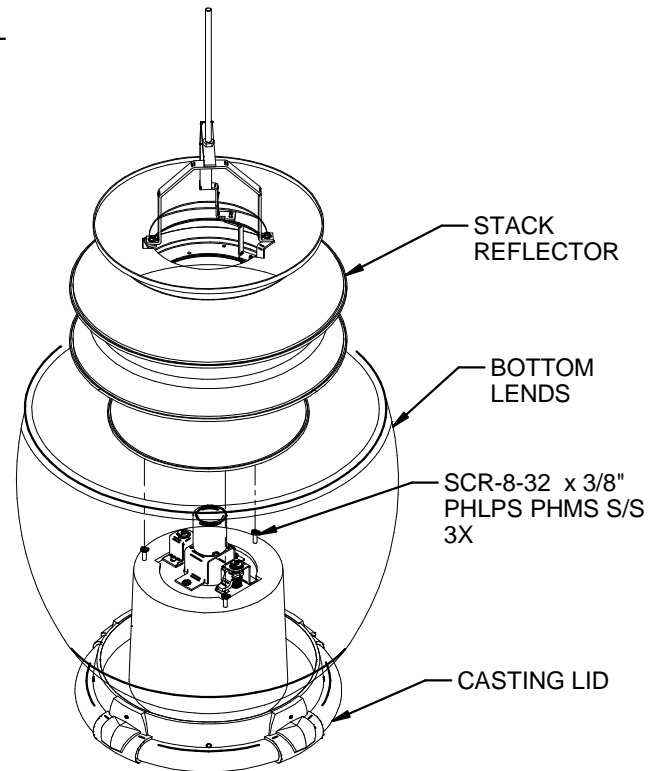
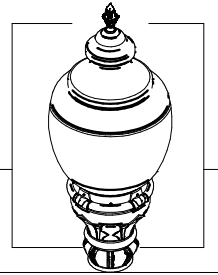


FIG. 1-2



Y-LED Upgrade Kit Installation Guide

Fixture: FGL - Federal Globe Large Scale (FGL) - For SLG/PA3/PA5 Lens

2. REMOVE EXISTING BALLAST ASSEMBLY AND SOCKET ASSEMBLY

1. TILT CAST LID TO THE SIDE BY PULLING LATCH BACKWARD. (FIG. 2-1)
2. DISENGAGE QUICK-DISCONNECT AND PULL APART. (FIG. 2-1)
3. REMOVE SOCKET ASSEMBLY BY TURNING TURN-LATCH COUNTER CLOCKWISE. (FIG. 2-2)
4. REMOVE BALLAST ASSEMBLY. (FIG. 2-3)

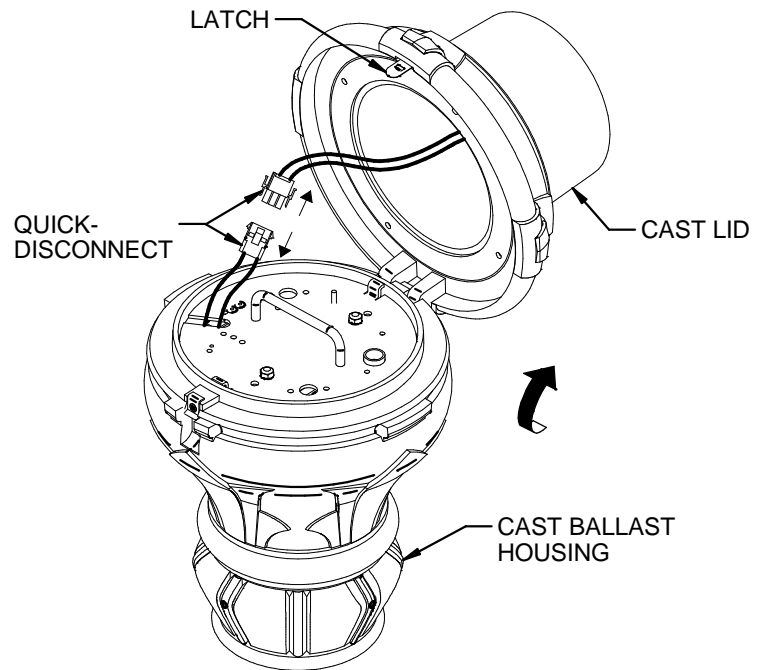


FIG. 2-1

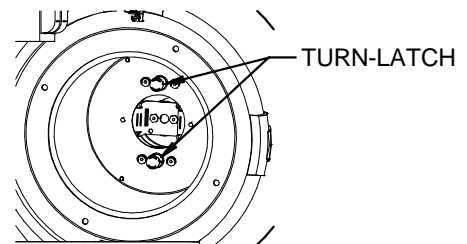


FIG. 2-2

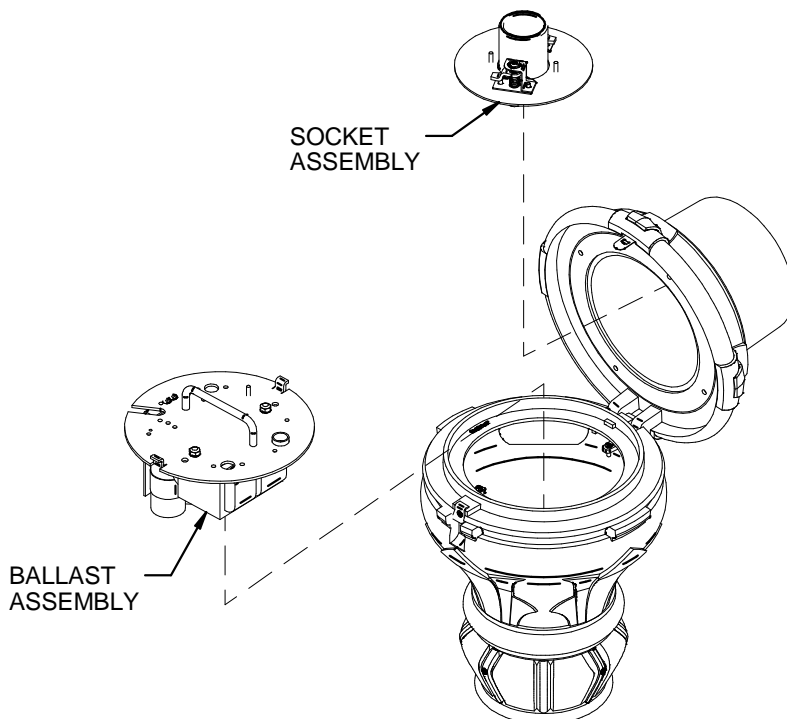
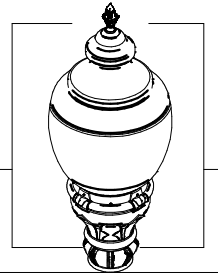


FIG. 2-3



Y-LED Upgrade Kit Installation Guide

Fixture: FGL - Federal Globe Large Scale (FGL) - For SLG/PA3/PA5 Lens

3. INSTALLING 32-LED Y6 MODULE AND LENS

1. INSTALL Y-MODULE TO CAST LID **WITH ARROW ON MOUNTING PLATE POINTING TO LATCH ON CAST LID** USING PROVIDED 8-32 X 3/8" SCREWS. (FIG. 3-1)
ARROW DENOTE STREET SIDE.
2. PLACE TOP LENS ASSEMBLY OVER BOTTOM LENS. (FIG. 3-2)
3. INSTALL GASKET AND FINIAL. (FIG. 3-2)
4. INSTALLATION COMPLETE. (FIG. 3-2)

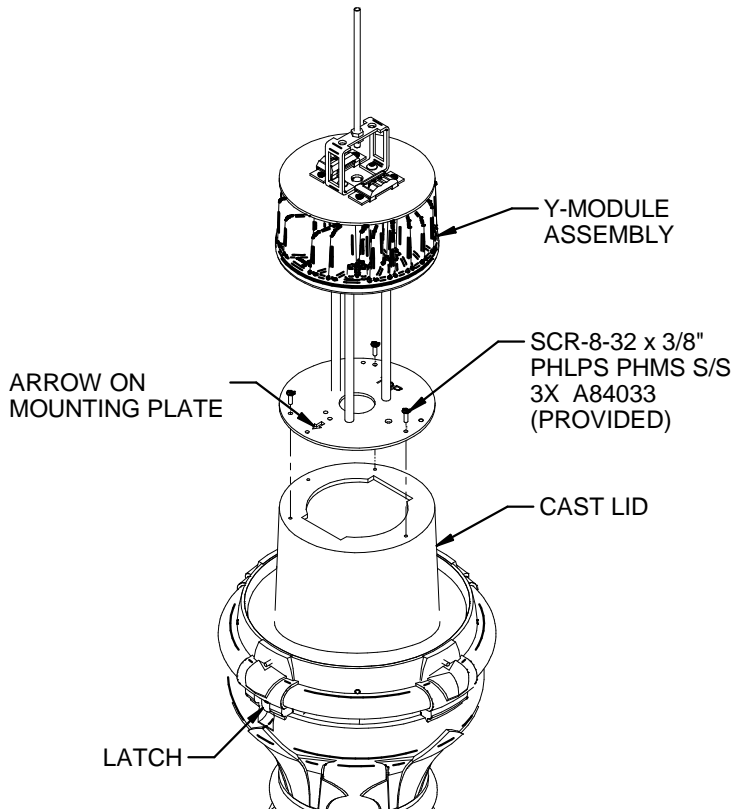


FIG. 3-1

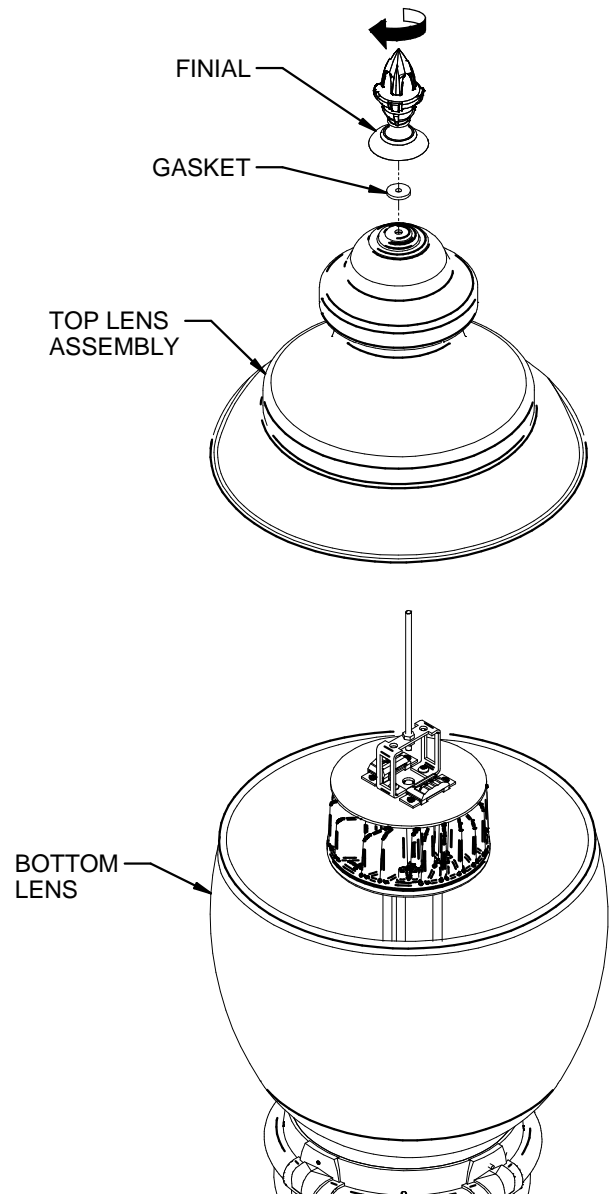
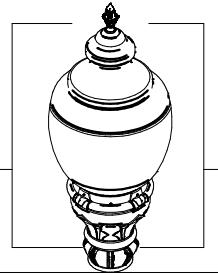


FIG. 3-2



Y-LED Upgrade Kit Installation Guide

Fixture: FGL - Federal Globe Large Scale (FGL) - For SLG/PA3/PA5 Lens

4. INSTALLING DRIVER ASSEMBLY

1. TILT GLOBE ASSEMBLY TO THE SIDE BY PULLING LATCH BACKWARD. (FIG. 4-1)
2. INSTALL DRIVER ASSY. (FIG. 4-1)
3. MAKE WIRE CONNECTIONS BY CONNECTING QUICK DISCONNECT FROM DRIVER ASSY TO SOCKET ASSY AND LIFESHIELD QUICK DISCONNECT. (FIG. 4-2)
3. CLOSE FIXTURE, ENSURE LATCH SNAPS BACK TO ITS ORIGINAL POSITION. (FIG. 4-3)
4. MAKE WIRE CONNECTION FROM INCOMING TO DRIVER ASSY AS FOLLOWS: WHITE TO WHITE, BLACK TO BLACK AND GREEN TO GREEN. (FIG. 4-3)
5. INSTALLATION COMPLETE.

QUICK-DISCONNECT

LIFESHIELD QUICK DISCONNECT

CAST BALLAST HOUSING

FIG. 4-2

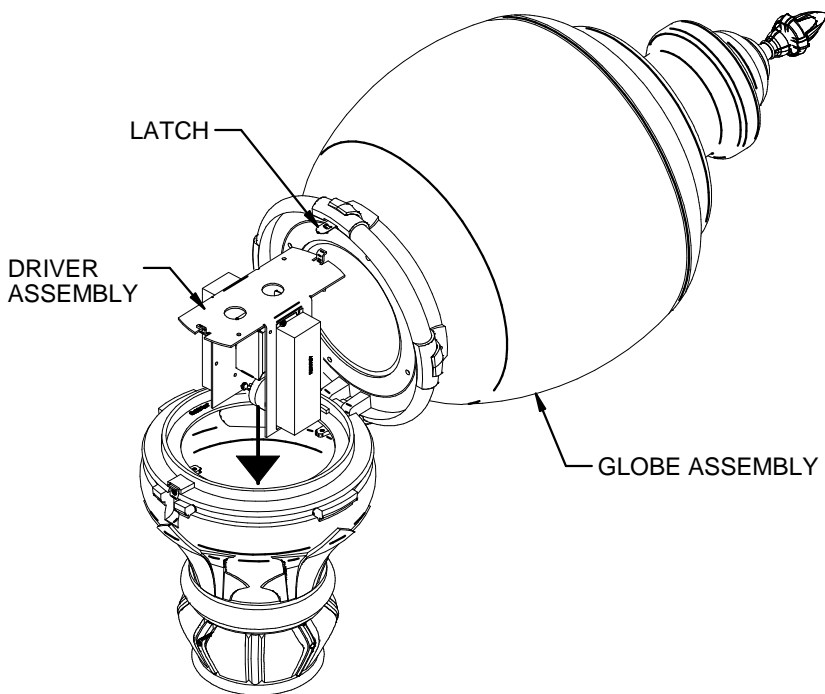


FIG. 4-1

INCOMING

_____	BLACK
_____	WHITE
_____	GREEN

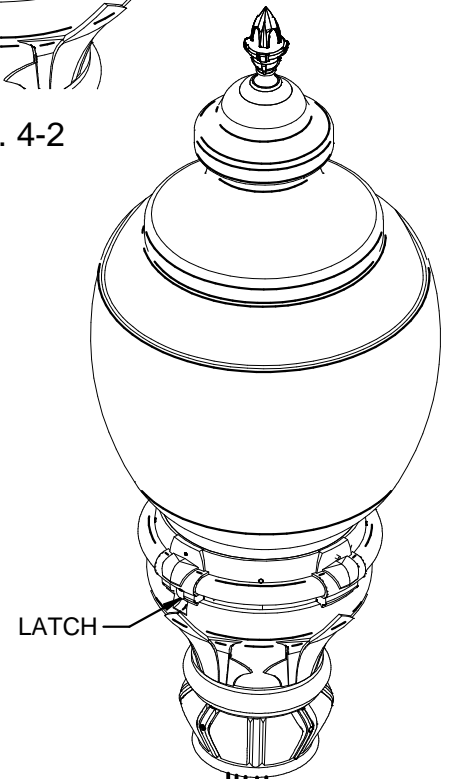
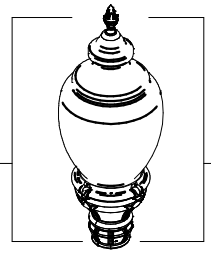


FIG. 4-3

_____	BLACK
_____	WHITE
_____	GREEN
_____	PURPLE
_____	GRAY



Y-LED Upgrade Kit Installation Guide

Fixture: FGS™ - Federal Globe Small Scale (FGS) FOR SAL LENS FOR GR3/ GR5/ BLO

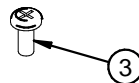
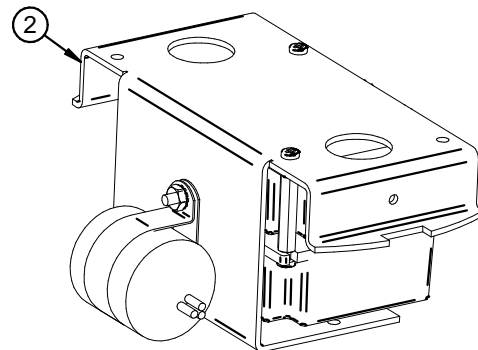
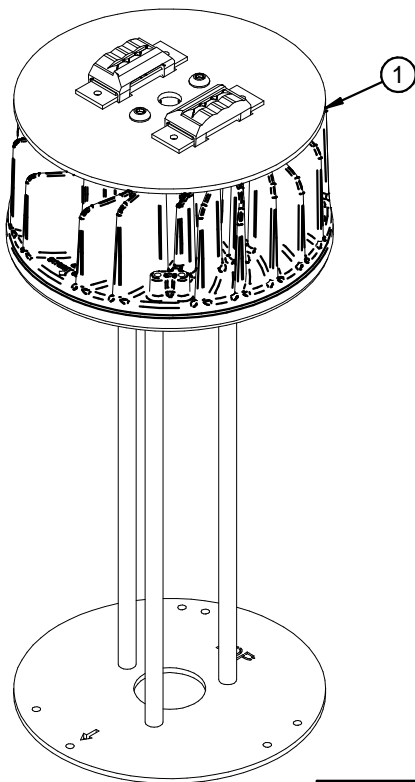


WARNING: Fixtures must be grounded in accordance with local codes or the National Electrical Code. Failure to do so may result in serious personal injury.

MAINTENANCE: A regularly scheduled maintenance program should be established to retain optimum light output and reduce heat retention. Dusting with a soft, clean, dry cloth is normally sufficient for the optics.

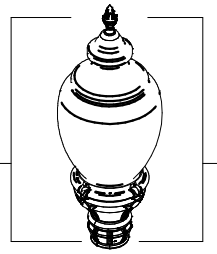
CAUTION: All wiring must be done by a qualified electrician. KEEP THIS SHEET FOR FUTURE REFERENCE.

UPGRADE KIT CONTENTS



PARTS LIST

ITEM #	QTY	PART #	DESCRIPTION
1	1	93049900	RETROFIT KIT Y-LED FGS SAL LENS
2	1	93049901	RETROFIT KIT Y-LED FGS DRIVER ASSY
3	3	A84033	SCR-8-32 x 3/8" PHLPS PHMS S/S



Y-LED Upgrade Kit Installation Guide

Fixture: FGS™ - Federal Globe Small Scale (FGS) FOR SAL LENS FOR GR3/ GR5/ BLO

1. REMOVE LENS

⚠ TURN OFF ALL POWER TO THE UNIT AND TAKE PROPER SAFETY PRECAUTION. FAILURE TO DO SO MAY RESULT IN SERIOUS PERSONAL INJURY.

1. REMOVE GLOBE ASSEMBLY BY LOOSEN FOUR SET SCREWS. (FIG. 1-1)
2. IF GR3/GR5 OPTION IS PRESENT, REMOVE BY REMOVING TWO 8-32 x 1/4" SCREWS. (FIG. 1-2)

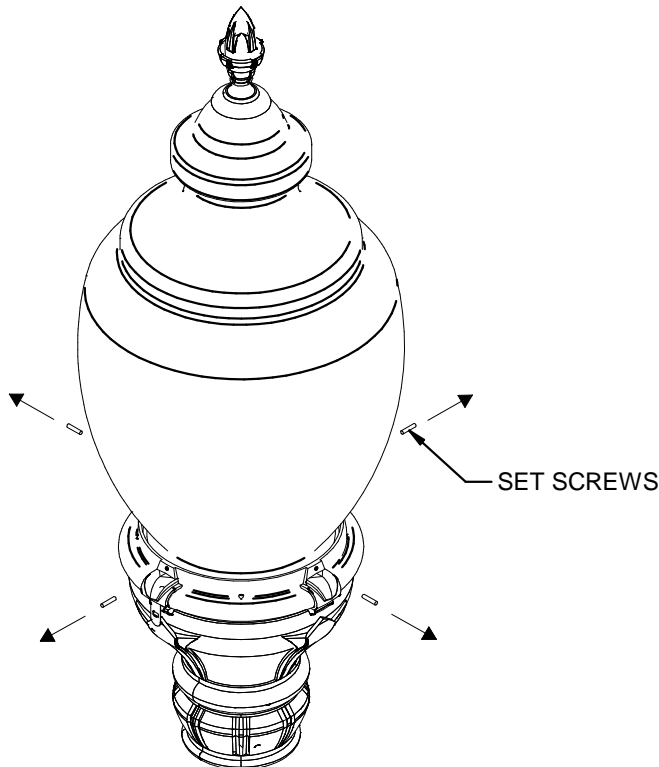


FIG. 1-1

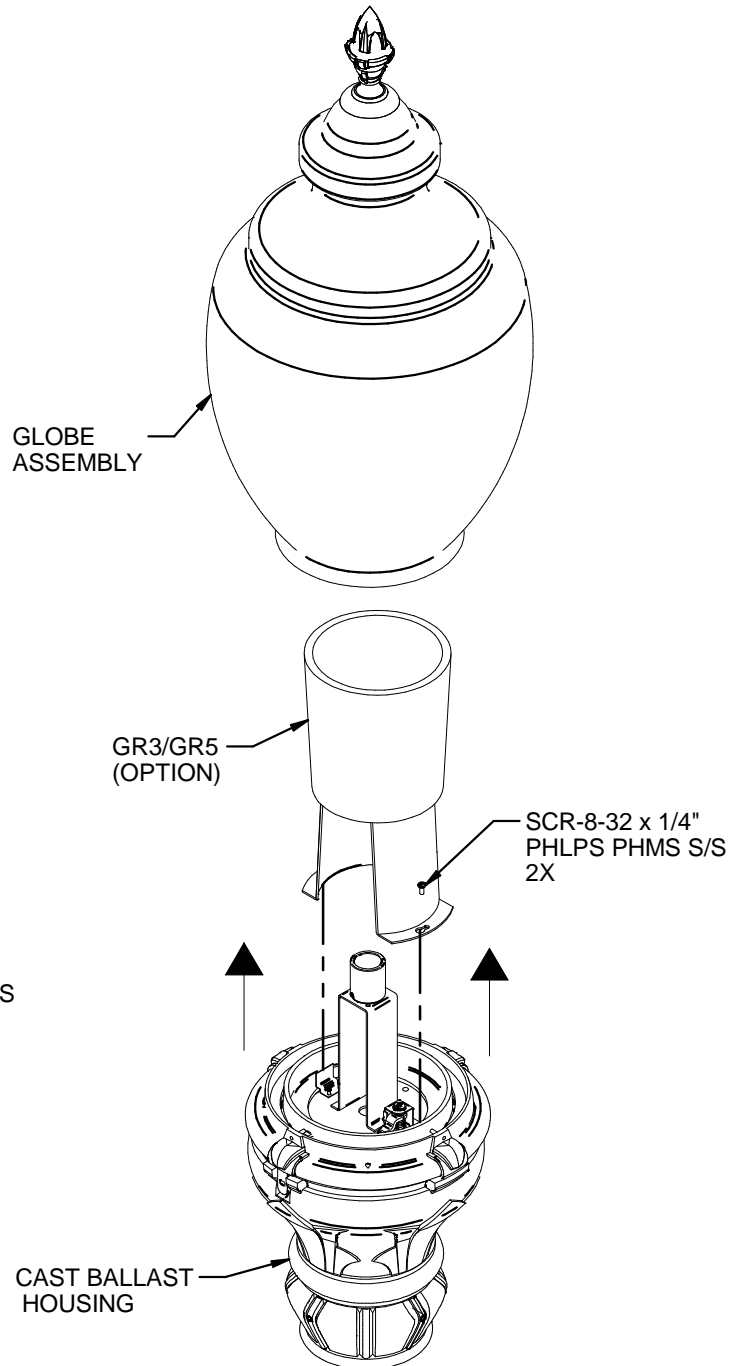
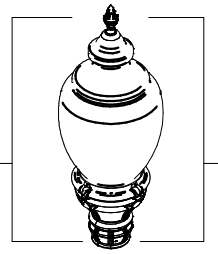


FIG. 1-2



Y-LED Upgrade Kit Installation Guide

Fixture: FGS™ - Federal Globe Small Scale (FGS) FOR SAL LENS FOR GR3/ GR5/ BLO

2. REMOVE EXISTING BALLAST ASSEMBLY AND SOCKET ASSEMBLY

1. TILT CAST LID TO THE SIDE BY PULLING LATCH BACKWARD. (FIG. 2-1)
2. DISENGAGE QUICK-DISCONNECT AND PULL APART. (FIG. 2-1)
3. REMOVE SOCKET ASSEMBLY BY TURNING TURN-LATCH COUNTER CLOCKWISE. (FIG. 2-2)
4. REMOVE BALLAST ASSEMBLY. (FIG. 2-3)

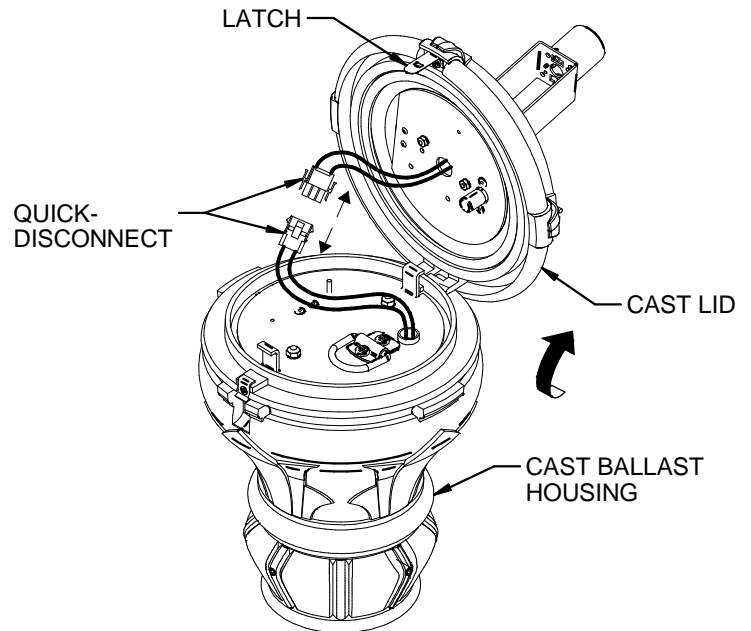


FIG. 2-1

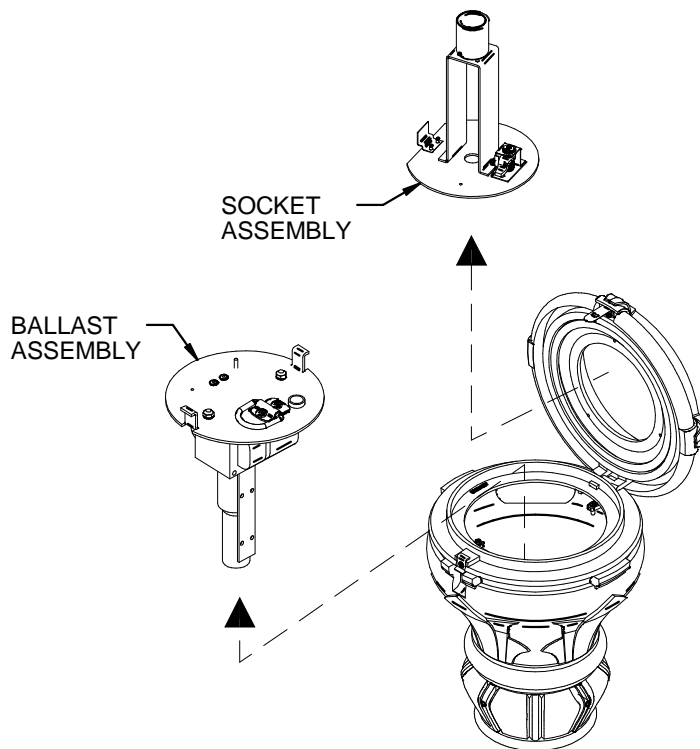


FIG. 2-3

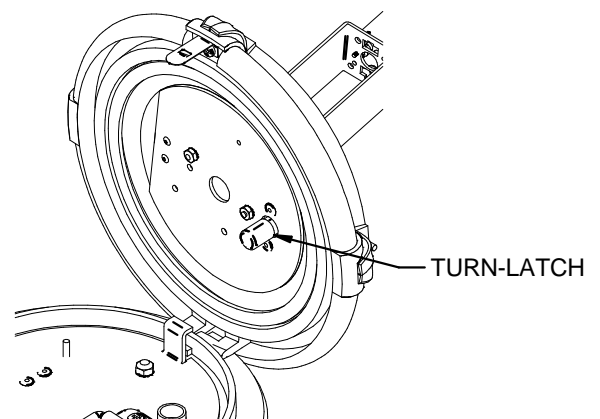
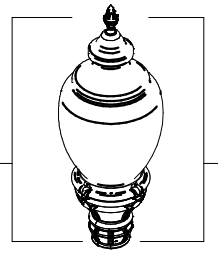


FIG. 2-2



Y-LED Upgrade Kit Installation Guide

Fixture: FGS™ - Federal Globe Small Scale (FGS) FOR SAL LENS FOR GR3/ GR5/ BLO

3. INSTALLING 32-LED Y6 MODULE AND LENS

1. INSTALL Y-MODULE TO CAST LID **WITH** **ARROW ON MOUNTING PLATE POINTING TO LATCH ON CAST LID** USING PROVIDED 8-32 X 3/8" SCREWS. (FIG. 3-1) **ARROW DENOTE STREET SIDE.**
2. PLACE GLOBE ASSEMBLY OVER CAST LID AND SECURE WITH FOUR SET SCREWS. (FIG. 3-2)

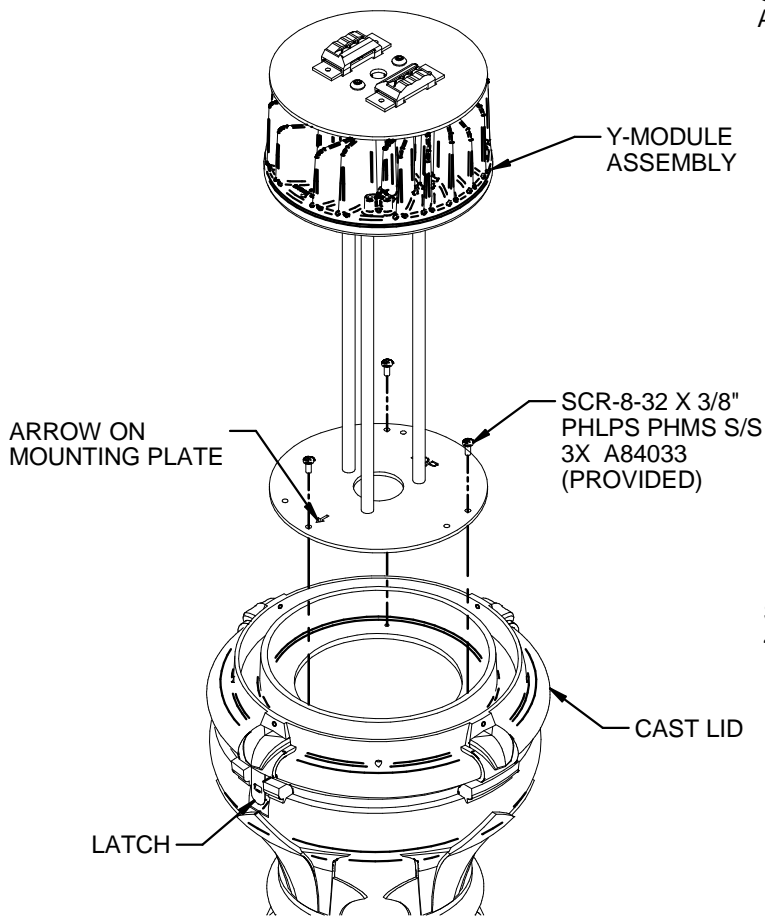


FIG. 3-1

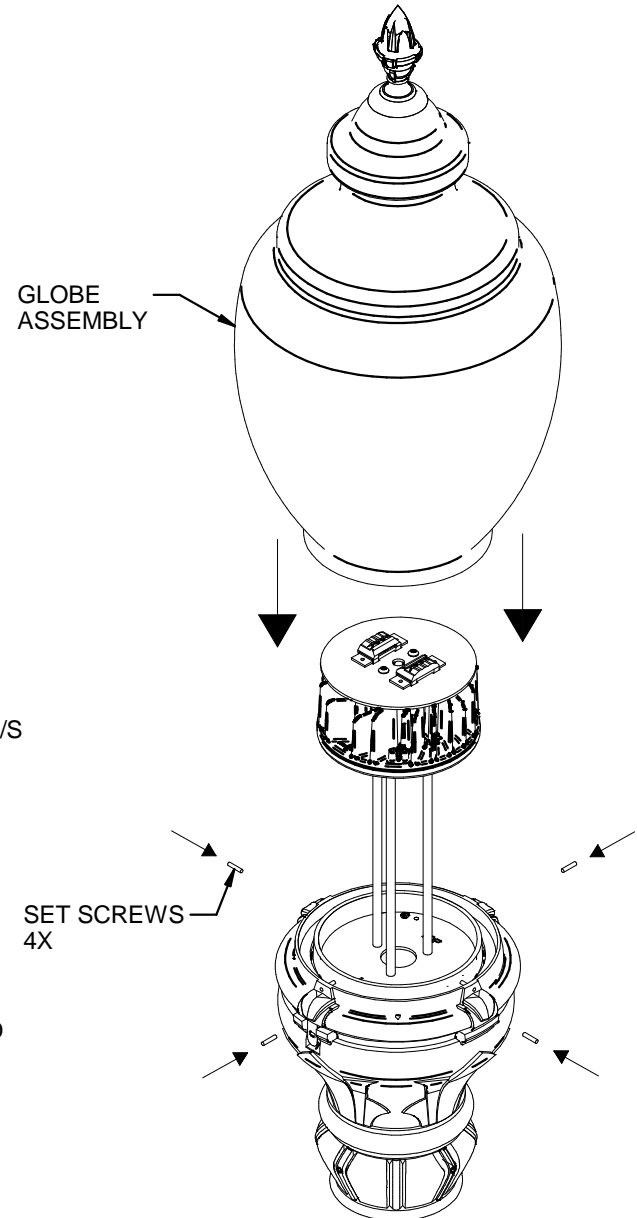
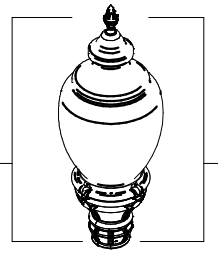


FIG. 3-2



Y-LED Upgrade Kit Installation Guide

Fixture: FGS™ - Federal Globe Small Scale (FGS) FOR SAL LENS FOR GR3/ GR5/ BLO

4. INSTALLING DRIVER ASSEMBLY

1. TILT GLOBE ASSEMBLY TO THE SIDE BY PULLING LATCH BACKWARD. (FIG. 4-1)
2. INSTALL DRIVER ASSY. (FIG. 4-1)
3. MAKE WIRE CONNECTIONS BY CONNECTING QUICK DISCONNECT FROM DRIVER ASSY TO SOCKET ASSY AND LIFESHIELD QUICK DISCONNECT. (FIG. 4-2)
4. CLOSE FIXTURE, ENSURE LATCH SNAPS BACK TO ITS ORIGINAL POSITION. (FIG. 4-3)
5. MAKE WIRE CONNECTIONS FROM INCOMING TO DRIVER ASSY: WHITE TO WHITE, BLACK TO BLACK AND GREEN TO GREEN. (FIG. 4-3)
6. INSTALLATION COMPLETE.

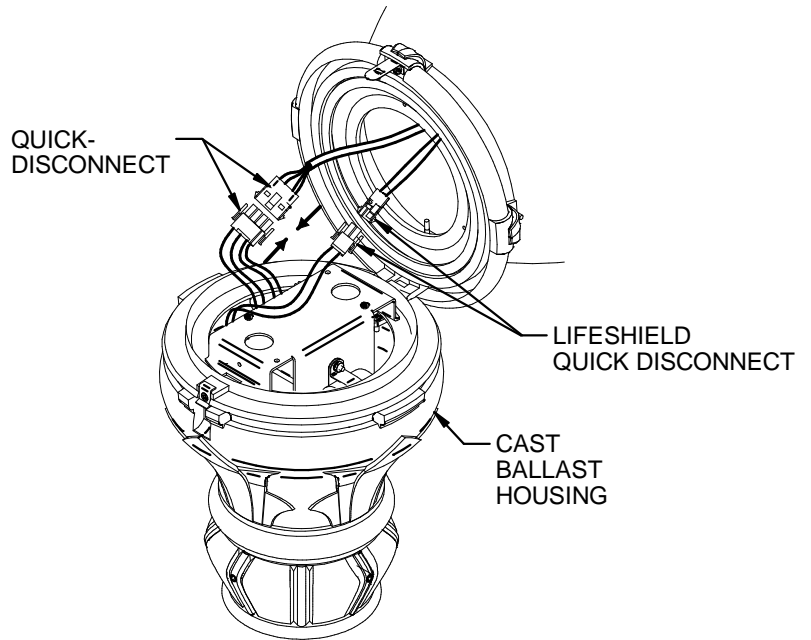


FIG. 4-2

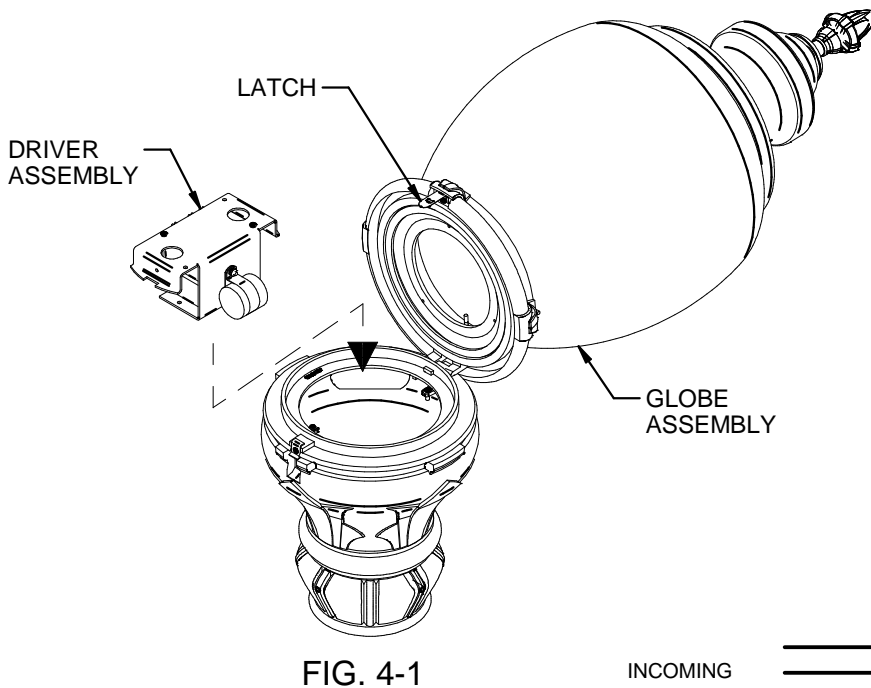


FIG. 4-1

INCOMING

BLACK
WHITE
GREEN

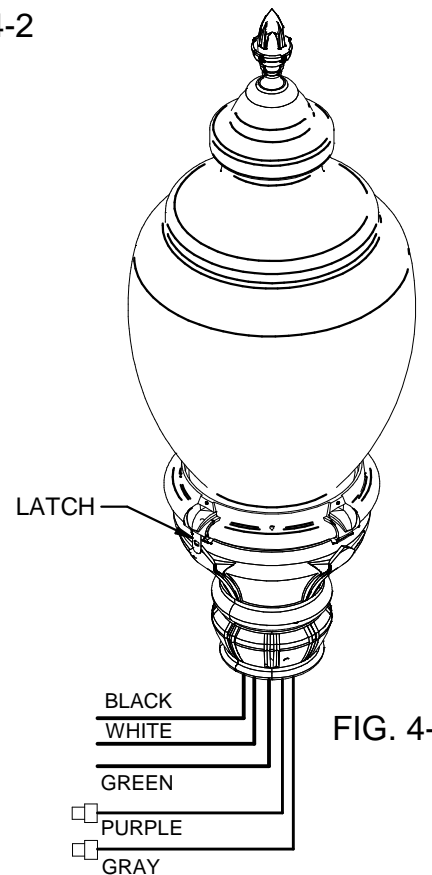
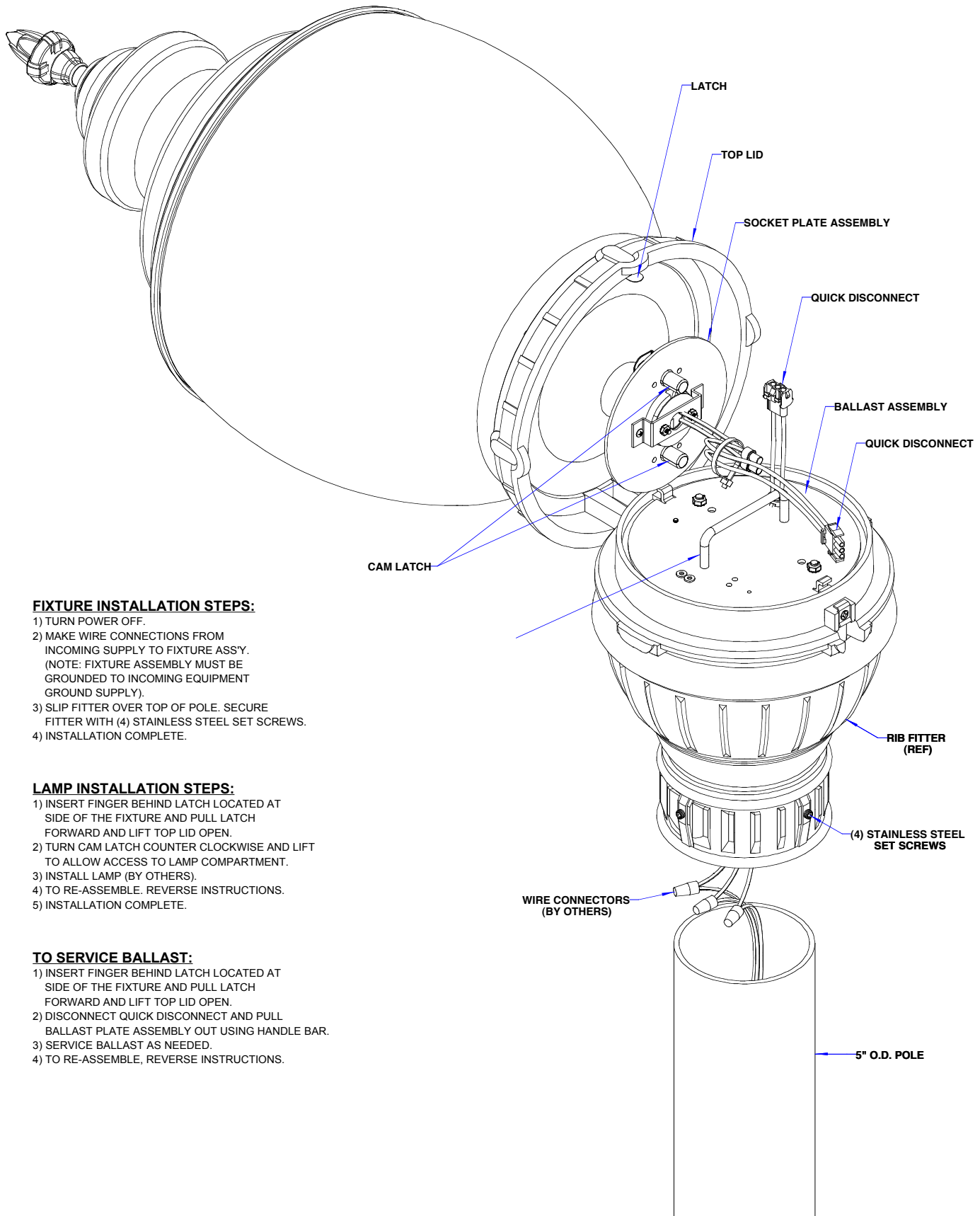


FIG. 4-3

INSTALLATION INSTRUCTIONS

CATALOG NUMBER

FGL



FIXTURE INSTALLATION STEPS:

- 1) TURN POWER OFF.
- 2) MAKE WIRE CONNECTIONS FROM INCOMING SUPPLY TO FIXTURE ASS'Y. (NOTE: FIXTURE ASSEMBLY MUST BE GROUNDED TO INCOMING EQUIPMENT GROUND SUPPLY).
- 3) SLIP FITTER OVER TOP OF POLE. SECURE FITTER WITH (4) STAINLESS STEEL SET SCREWS.
- 4) INSTALLATION COMPLETE.

LAMP INSTALLATION STEPS:

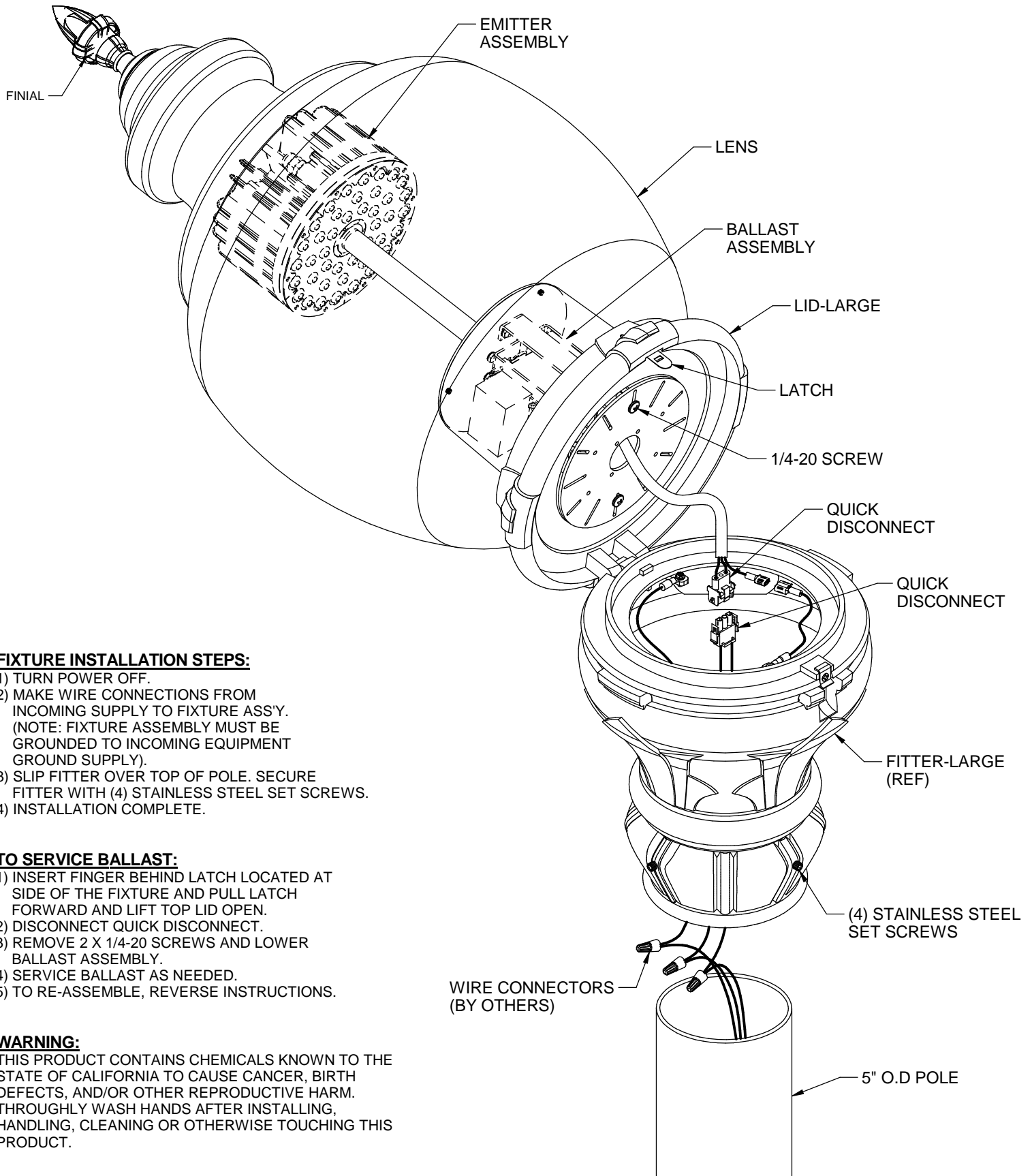
- 1) INSERT FINGER BEHIND LATCH LOCATED AT SIDE OF THE FIXTURE AND PULL LATCH FORWARD AND LIFT TOP LID OPEN.
- 2) TURN CAM LATCH COUNTER CLOCKWISE AND LIFT TO ALLOW ACCESS TO LAMP COMPARTMENT.
- 3) INSTALL LAMP (BY OTHERS).
- 4) TO RE-ASSEMBLE. REVERSE INSTRUCTIONS.
- 5) INSTALLATION COMPLETE.

TO SERVICE BALLAST:

- 1) INSERT FINGER BEHIND LATCH LOCATED AT SIDE OF THE FIXTURE AND PULL LATCH FORWARD AND LIFT TOP LID OPEN.
- 2) DISCONNECT QUICK DISCONNECT AND PULL BALLAST PLATE ASSEMBLY OUT USING HANDLE BAR.
- 3) SERVICE BALLAST AS NEEDED.
- 4) TO RE-ASSEMBLE. REVERSE INSTRUCTIONS.

INSTALLATION INSTRUCTIONS

CATALOG NUMBER

FGL-LED

FIXTURE INSTALLATION STEPS:

- 1) TURN POWER OFF.
- 2) MAKE WIRE CONNECTIONS FROM INCOMING SUPPLY TO FIXTURE ASS'Y. (NOTE: FIXTURE ASSEMBLY MUST BE GROUNDED TO INCOMING EQUIPMENT GROUND SUPPLY).
- 3) SLIP FITTER OVER TOP OF POLE. SECURE FITTER WITH (4) STAINLESS STEEL SET SCREWS.
- 4) INSTALLATION COMPLETE.

TO SERVICE BALLAST:

- 1) INSERT FINGER BEHIND LATCH LOCATED AT SIDE OF THE FIXTURE AND PULL LATCH FORWARD AND LIFT TOP LID OPEN.
- 2) DISCONNECT QUICK DISCONNECT.
- 3) REMOVE 2 X 1/4-20 SCREWS AND LOWER BALLAST ASSEMBLY.
- 4) SERVICE BALLAST AS NEEDED.
- 5) TO RE-ASSEMBLE, REVERSE INSTRUCTIONS.

WARNING:

THIS PRODUCT CONTAINS CHEMICALS KNOWN TO THE STATE OF CALIFORNIA TO CAUSE CANCER, BIRTH DEFECTS, AND/OR OTHER REPRODUCTIVE HARM. THOROUGHLY WASH HANDS AFTER INSTALLING, HANDLING, CLEANING OR OTHERWISE TOUCHING THIS PRODUCT.

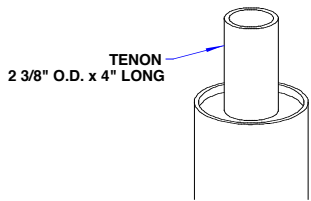
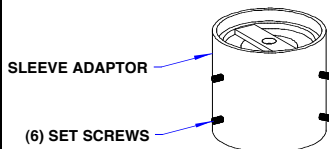
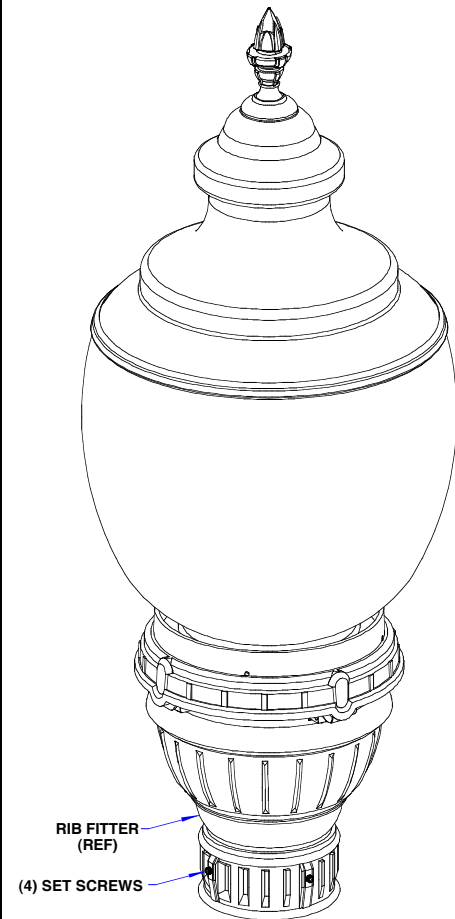
INSTALLATION INSTRUCTIONS

CATALOG NUMBER

FGL-TA23 / TA3 & TA4

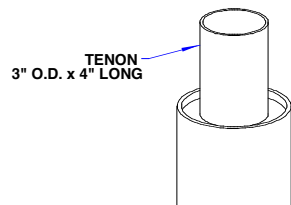
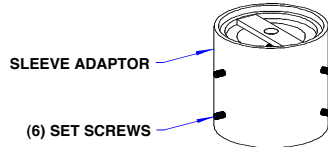
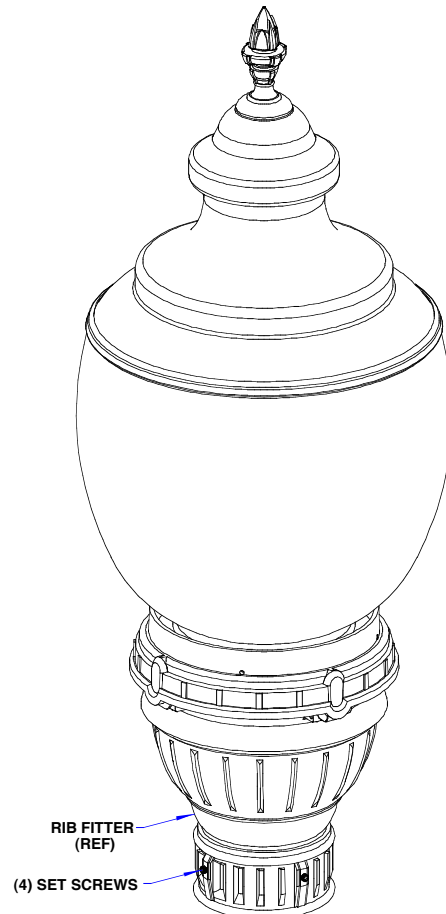
WARNING:

THIS PRODUCT CONTAINS CHEMICALS KNOWN TO THE STATE OF CALIFORNIA TO CAUSE CANCER, BIRTH DEFECTS, AND/OR OTHER REPRODUCTIVE HARM. THOROUGHLY WASH HANDS AFTER INSTALLING, HANDLING, CLEANING OR OTHERWISE TOUCHING THIS PRODUCT.



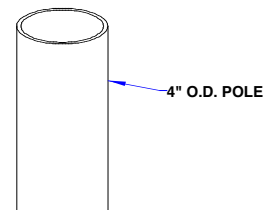
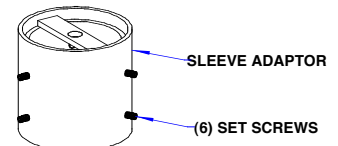
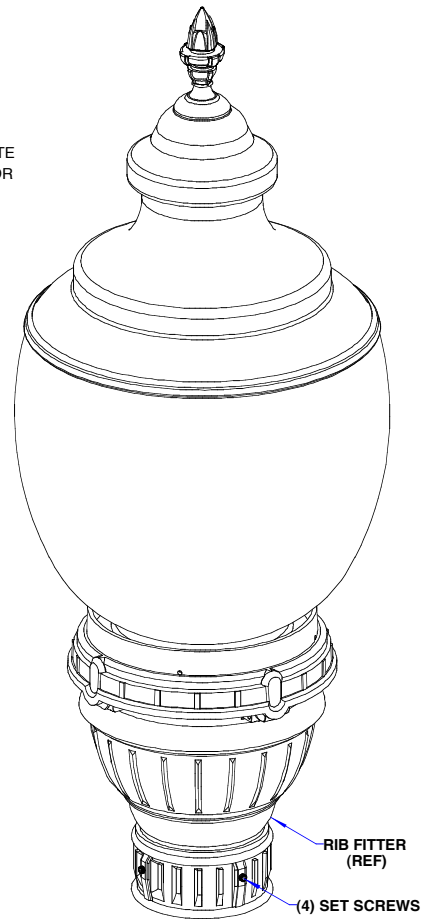
TA23

- 1) SLIP ADAPTOR OVER TENON AND SECURE WITH (6) SET SCREWS.
- 2) SECURE FIXTURE OVER ADAPTOR AND SECURE WITH (4) SET SCREWS.
- 3) INSTALLATION COMPLETE.



TA3

- 1) SLIP ADAPTOR OVER POLE AND SECURE WITH (6) SET SCREWS.
- 2) SECURE FIXTURE OVER ADAPTOR AND SECURE WITH (4) SET SCREWS.
- 3) INSTALLATION COMPLETE.



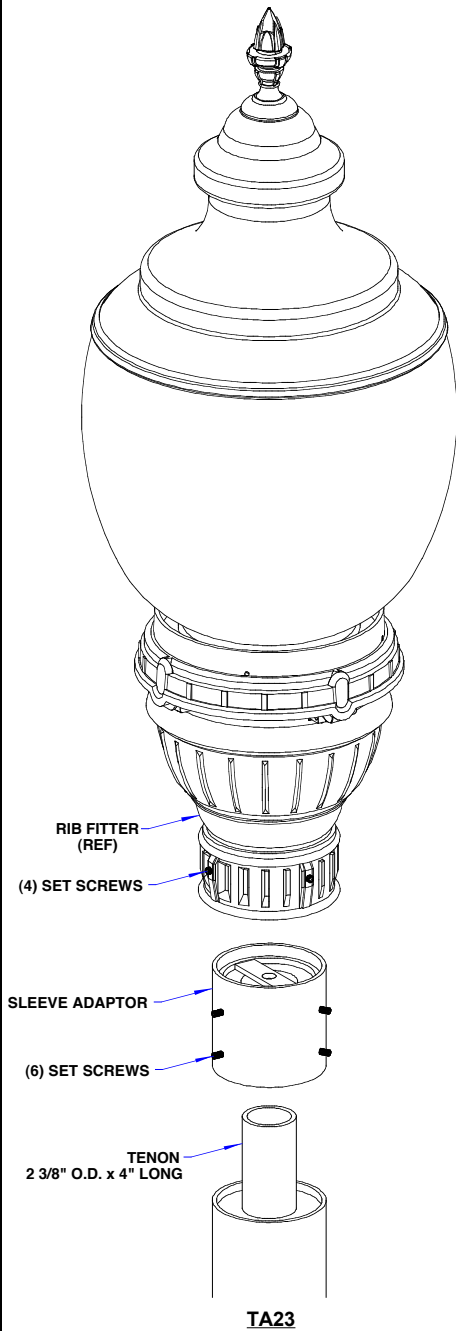
TA4

- 1) SLIP ADAPTOR OVER POLE AND SECURE WITH (6) SET SCREWS.
- 2) SECURE FIXTURE OVER ADAPTOR AND SECURE WITH (4) SET SCREWS.
- 3) INSTALLATION COMPLETE.

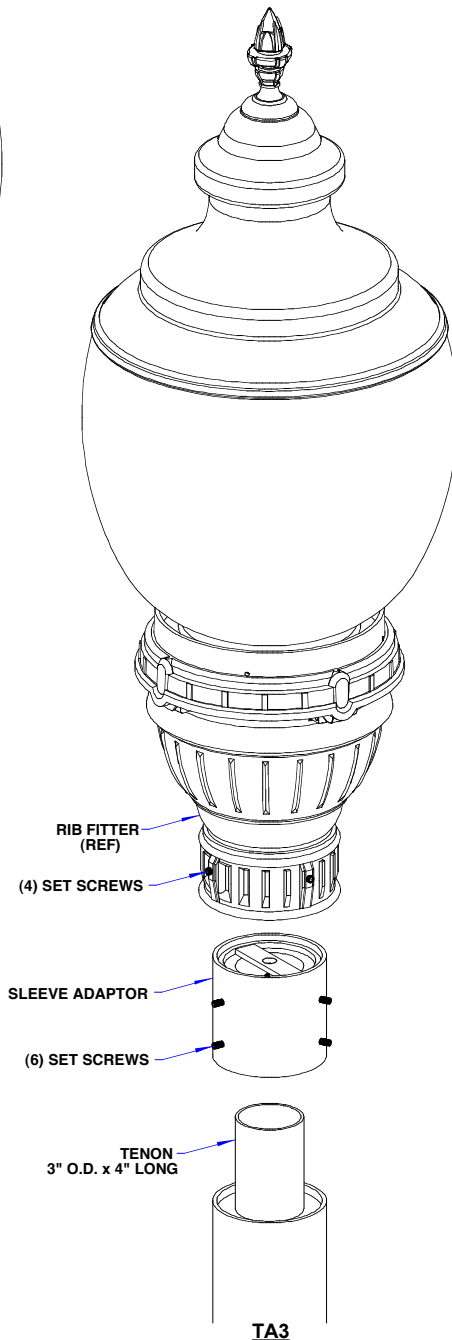
INSTALLATION INSTRUCTIONS

CATALOG NUMBER

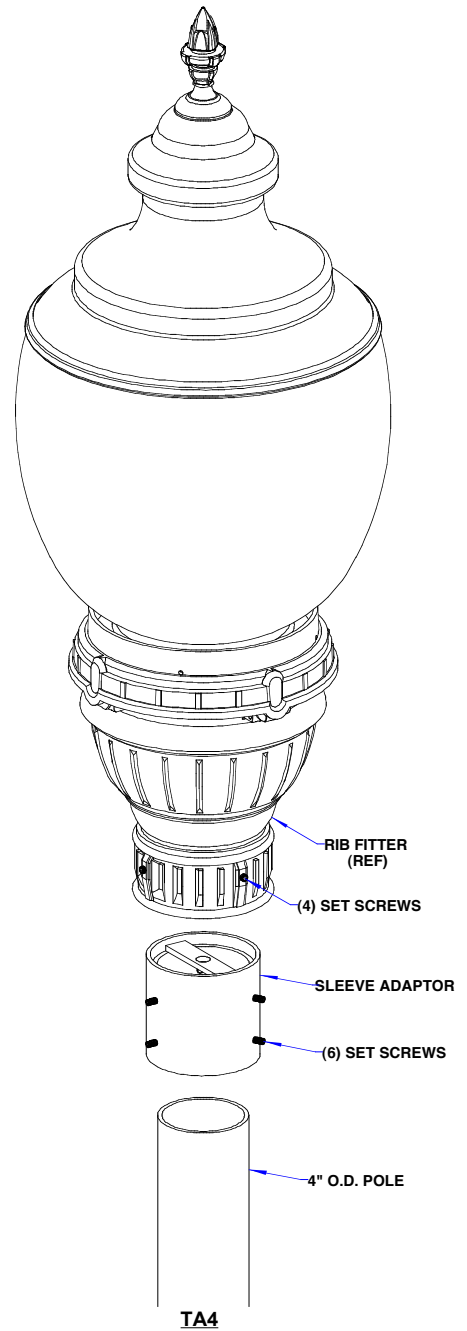
FGL-TA23 / TA3 & TA4



- 1) SLIP ADAPTOR OVER TENON AND SECURE WITH (6) SET SCREWS.
- 2) SECURE FIXTURE OVER ADAPTOR AND SECURE WITH (4) SET SCREWS.
- 3) INSTALLATION COMPLETE.



- 1) SLIP ADAPTOR OVER POLE AND SECURE WITH (6) SET SCREWS.
- 2) SECURE FIXTURE OVER ADAPTOR AND SECURE WITH (4) SET SCREWS.
- 3) INSTALLATION COMPLETE.



- 1) SLIP ADAPTOR OVER POLE AND SECURE WITH (6) SET SCREWS.
- 2) SECURE FIXTURE OVER ADAPTOR AND SECURE WITH (4) SET SCREWS.
- 3) INSTALLATION COMPLETE.