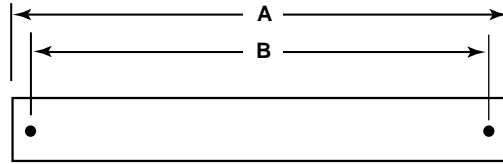
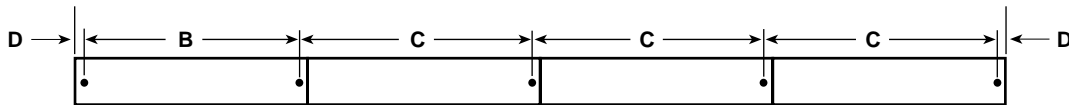


## CMI AND PMI MOUNTING INFORMATION

(For use with CM18, CMF18, CCMF18, S18, and SS18 mounting hardware)



4' or 8' Single



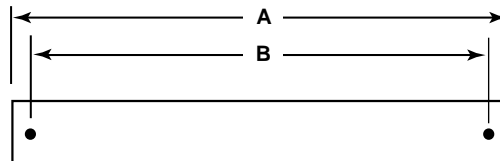
4' or 8' Units in Rows

### Data Chart

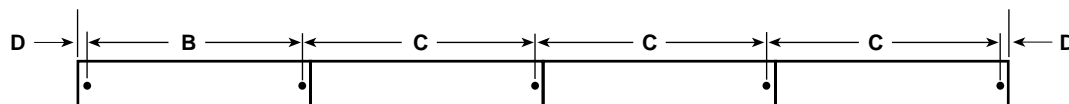
Nominal Length	Lamp Type	A	B	C	D
4'	RS	49 <sup>7</sup> / <sub>16</sub> "	45 <sup>1</sup> / <sub>4</sub> "	49 <sup>3</sup> / <sub>8</sub> "	2 <sup>1</sup> / <sub>16</sub> "
4'	SL/HO	48"	43 <sup>13</sup> / <sub>16</sub> "	47 <sup>15</sup> / <sub>16</sub> "	2 <sup>1</sup> / <sub>16</sub> "
8'	RS	98 <sup>13</sup> / <sub>16</sub> "	94 <sup>5</sup> / <sub>8</sub> "	98 <sup>3</sup> / <sub>4</sub> "	2 <sup>1</sup> / <sub>16</sub> "
8'	SL/HO	96"	91 <sup>13</sup> / <sub>16</sub> "	95 <sup>15</sup> / <sub>16</sub> "	2 <sup>1</sup> / <sub>16</sub> "

## CHI MOUNTING INFORMATION

(For use with KHC or CMHC mounting hardware)



4' or 8' Single



4' or 8' Units in Rows

### Data Chart

Nominal Length	Lamp Type	A	B	C	D	Feed point at end of housing.
4'	RS	49 <sup>7</sup> / <sub>16</sub> "	44 <sup>5</sup> / <sub>8</sub> "	49 <sup>3</sup> / <sub>8</sub> "	2 <sup>3</sup> / <sub>8</sub> "	
4'	SL/HO	48"	43 <sup>3</sup> / <sub>16</sub> "	47 <sup>15</sup> / <sub>16</sub> "	2 <sup>3</sup> / <sub>8</sub> "	
8'	RS	98 <sup>13</sup> / <sub>16</sub> "	94"	98 <sup>3</sup> / <sub>4</sub> "	2 <sup>3</sup> / <sub>8</sub> "	
8'	SL/HO	96"	91 <sup>3</sup> / <sub>16</sub> "	95 <sup>15</sup> / <sub>16</sub> "	2 <sup>3</sup> / <sub>8</sub> "	