

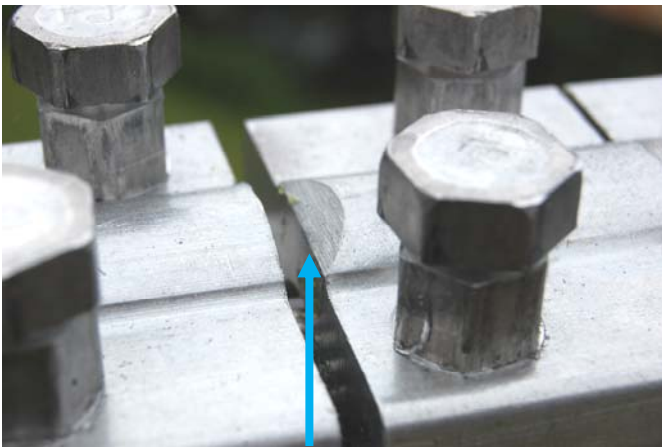
OPGW DEAD-END INSTALLATION INSTRUCTIONS



- 1) Remove bolts from one side of Dead-End.
- 2) Slip OPGW under keepers.



- 3) Replace bolts that were removed.



- 4) Be certain that the chamfered edge of the keeper is facing forward toward the span end of the Dead-End

- 5) **WARNING.** Tighten bolts evenly to prevent misaligned keepers.

- 6) Starting at the front of the dead end:
 - Tighten each bolt sequentially to approx. **5ft lbs.**
 - Repeat this sequence and tighten each bolt to approx. **25 ft. lbs.**
 - Finally tighten each bolt sequentially until the shear head breaks off. (approx. 350" lbs.)

- 6) See photos below that illustrate results from proper bolt tightening vs. improper tightening.



PROPER BOLT TIGHTENING RESULTS



IMPROPER BOLT TIGHTENING RESULTS