

Tools Required for Installation

- Angle Grinder w/type 27 metal grinding wheel
- Hammer
- Adjustable or 15/16" box-end wrench.
- Torque wrench & 15/16" socket.
- *Kopr-Shield* grease.
- Electrical Tape.



Step 1

- Strip about 5" of insulation.
- Wrap electrical tape around wire end to hold strands in place



Step 2

- Grind rail to clean, shiny metal, in an area slightly larger than the nest will cover. Grind the rail as smoothly as possible.



Step 3

- Be sure area is free of all dirt and contamination. Apply Kopr-Shield.



Step 4

- Hook clamp under rail and position to the side of installation position.



Step 5

- Place nest into position. Be sure the indicated side is facing **UP** and the inner surface is clear of debris.



Step 6

- Place wire into nest. Do not put Kopr-Shield inside nest.



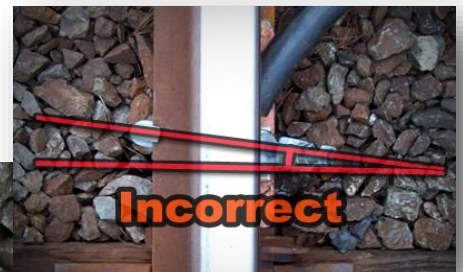
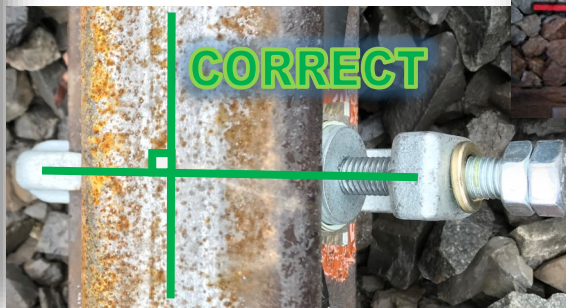
Step 7

- Place indenter on top of wire, aligning tabs of nest and indenter.



Step 8

- Slide clamp assembly over nest and indenter. Tighten assembly to snug condition.



Step 9

- Tighten to **30** foot-pounds, being certain that clamp remains **perpendicular** to rail.



Step 10

- Strike bolt with hammer 3 times and flex cable up and down to ensure it and the nest are properly seated.
- Again, make sure clamp is perpendicular to the rail.



Step 11

- Continue tightening to **45** foot-pounds and repeat the above seating procedure.
- Repeat cable flexing and hammer strike procedure to ensure the assembly is fully seated.

Step 12

- After cable and nest are fully seated, tighten to **90** foot-pounds [FT-LBS]. Acceptable range is 75-100 FT-LBS. **Do not over-tighten.**
- Inspect to be sure assembly is still in proper alignment. Do not strike with hammer after fully tightened.



Step 13

- Tighten locknut against clamp body until split lock washer is completely flattened.

Step 14

- Bend cable into final position.
- Perform final inspection of clamp assembly to ensure nothing has loosened while positioning cable.