

INSTALLATION INSTRUCTIONS

BOX TYPE _____

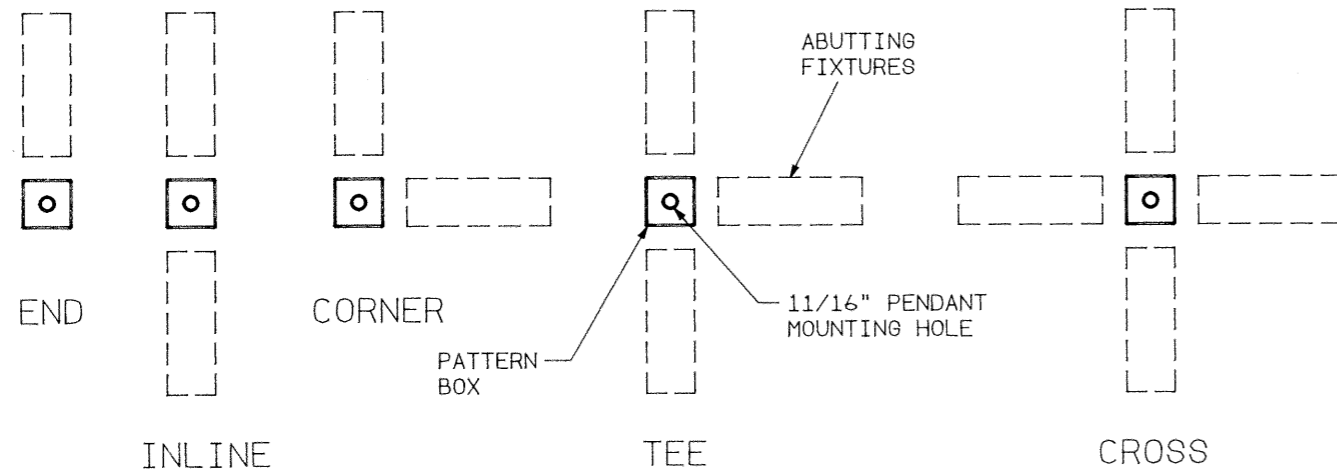
PATTERN BOXES 66N00 & 86N00

Pg. 1 OF 1

PART NO. 510107-2000

DO NOT MODIFY OR ALTER THIS PRODUCT IN ANY WAY, OR INSTALL IN ANY FASHION WHICH IS CONTRARY TO THE INSTRUCTIONS CONTAINED HEREIN. IF YOU HAVE ANY QUESTIONS REGARDING THIS PRODUCT OR THE INSTALLATION OF IT, PLEASE CALL LITECONTROL ENGINEERING AT 781-294-0100

5. Mount a pendant to the far end of each remaining fixture in the pattern and attach the non-pendant end to pattern box per step 2.
6. Replace covers and clean exterior surfaces with a general window cleaner.



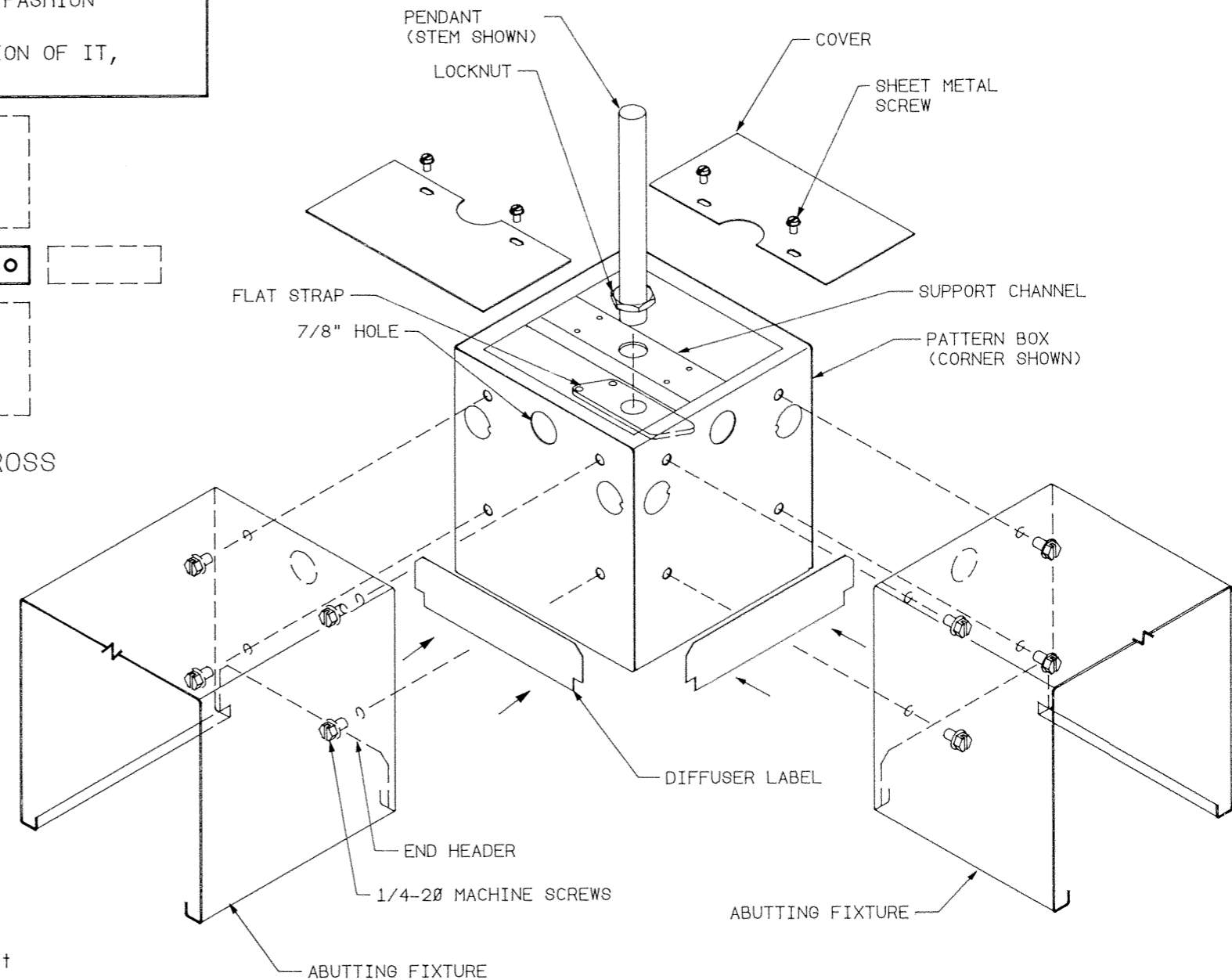
PLAN VIEWS

GENERAL NOTES: (READ SHEETS COMPLETELY BEFORE STARTING)

- A) Litecontrol recommends that (1) abutting fixture be mounted to a Pattern Box before lifting up to ceiling.
- B) Installation is similar for all types of Pattern Boxes.

INSTRUCTIONS:

1. Lift off Covers from Pattern Box by removing (4) sheet metal screws; See View "A".
2. Attach Pattern box to abutting fixture with (4) 1/4-20 machine screws thru fixture end header into side of box. Make sure all sides of are flush with fixture before tightening screws.
3. Abutting fixtures supplied with Parabolic Baffle diffusers (PBSS) are provided with adhesive backed Labels which are attached to sides of Pattern boxes. Peel off label backing paper and using the cutout in the fixture end header as a guide, press label(s) onto side(s) of box.
4. PENDANT MOUNTING: (pendants are shipped separately)
 - A) Thread a locknut onto stem or cable stud; position a Flat Strap underneath the center hole in support channel and thread stem into flat strap. Refer to View "A" on Cable instruction sheet No. 510227 when aircraft cables are used.
 - B) Mount another pendant to the opposite end of the abutting fixture per its installation instructions.
 - C) Lift fixture/pattern box assembly up and mount pendants to ceiling. Wire feed may be brought thru 7/8" holes in sides of box into fixture wireway.
 - D) Level assembly up or down by threading stems or cable studs into Flat Straps. Tighten all locknuts after leveling.



VIEW "A"