

READ BEFORE INSTALLATION

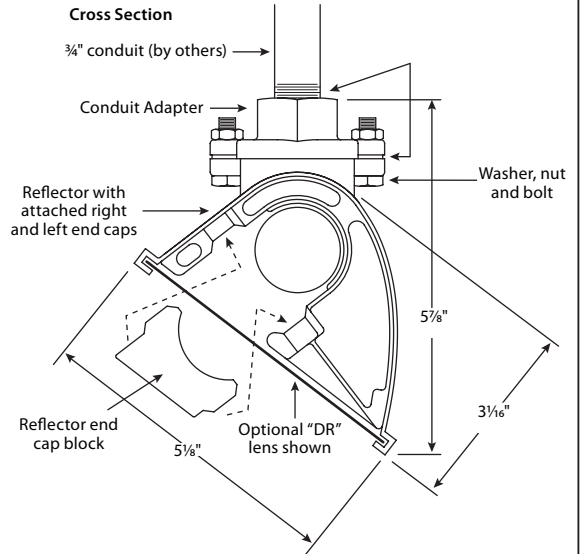
Assembly Instructions:

1. Attach conduit adapter to 3/4" conduit. Seal conduit connections with weather resistant sealing compound.
2. Attach correct lampholder assemblies (see manufacturer's order) to fixture assemblies.
3. Hold fixture assembly up to conduit/ adapter assembly. Make the proper wire connections and insert bolts into position, making sure gasket is installed, and tighten.
4. Insert reflector end cap blocks in notch of end caps, wedged between rubber boot of lampholders and end caps.
5. Insert 1/4-20 x 2 1/2" bolt through holes in end cap and block. Snug bolt so fixture can still be adjusted for proper aiming.
6. Adjust aiming level and tighten 1/4-20 x 2 1/2" bolt.
7. Install lamps, and energize fixture.

CAUTION: Do not install lamps when fixture is energized. It could result in premature ballast failure and shorting out of socket assemblies.

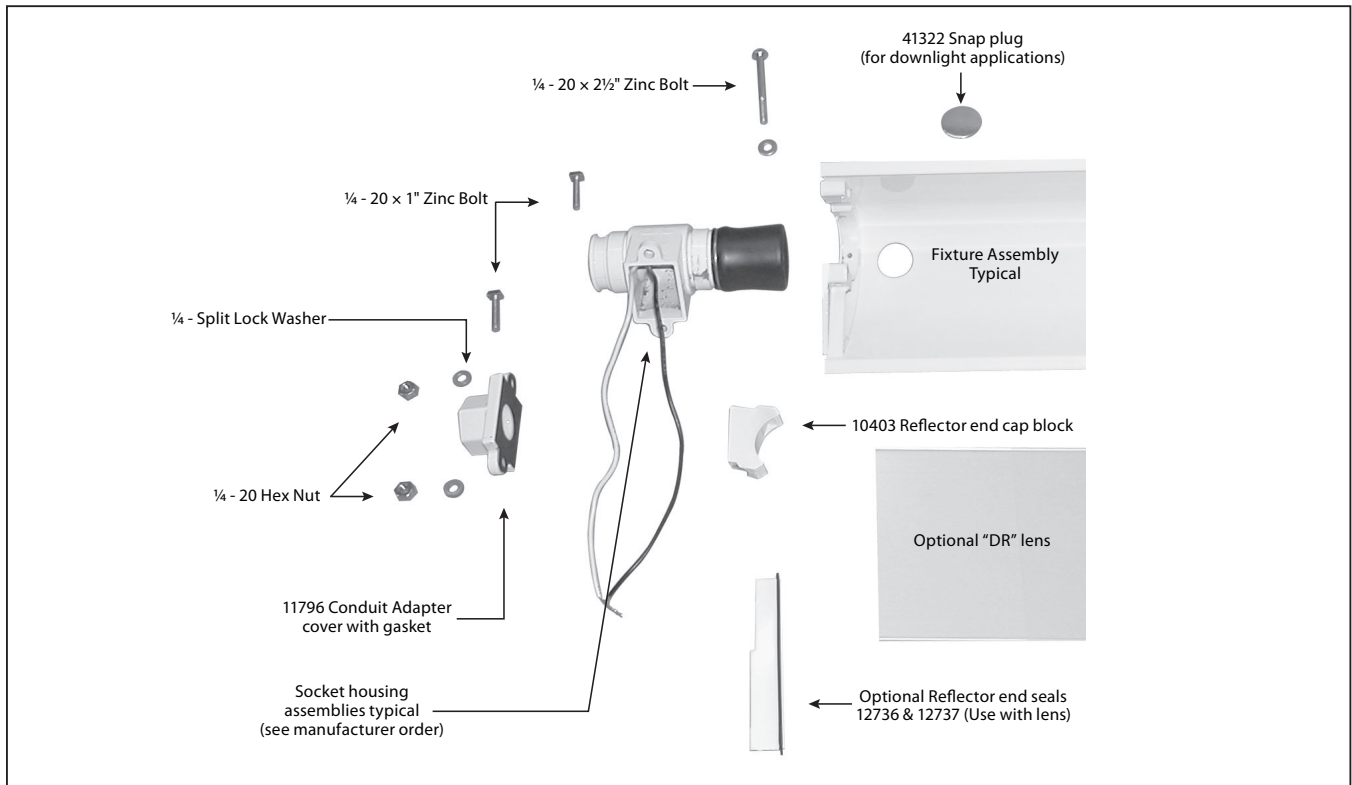
Notes:

- All socket housing assemblies are sealed and water resistant.
- Weatherproof gasket secured in conduit adapter cover.
- Optional "DR" extruded, high impact lens. Recommended for severe cold weather for proper lamp starting.
- Self-centering, weather resistant seal between lamp and socket housings.
- Die cast aluminum socket housings, covers, end reflector blocks, and end caps.



Columbia Lighting is not responsible for damage due to improper installation or handling. Recommend using lamps rated for outdoor use.

Note: All lamps, conduit, condulets and wiring to be supplied by others



RECOMMENDED MOUNTING

Downlight Shown

3' - 3" to 5' - 0" (see note*)

Type "C" condulets required in some states

Seal conduit connections with sealing compound

See wiring diagram 1

All wiring connections to ballast leads must be completed with wire suitable for at least 90°C

SLBB to be mounted in vertical position only.

See wiring diagram 2

Alternate arm mounting allows fixture to swivel for easy servicing.

*Mounting Arm Length: Satisfactory results may be obtained in a range of 3 to 5 feet dependent on sign depth and reflector adjustment.

Notes:

- Type "C" condulets required in some states.
- All wiring connections to ballast leads must be made with resistant connectors and wire suitable for 90°C.
- Weather resistant ballast box is required to be mounted in a vertical position as shown per UL listing.

Optional uplight (Remove snap plug for uplight mounting)

CAUTION: Do not install lamps when fixture is energized. It could result in premature ballast failure.

RECOMMENDED AIMING FOR SLA UNITS

3' to 5'

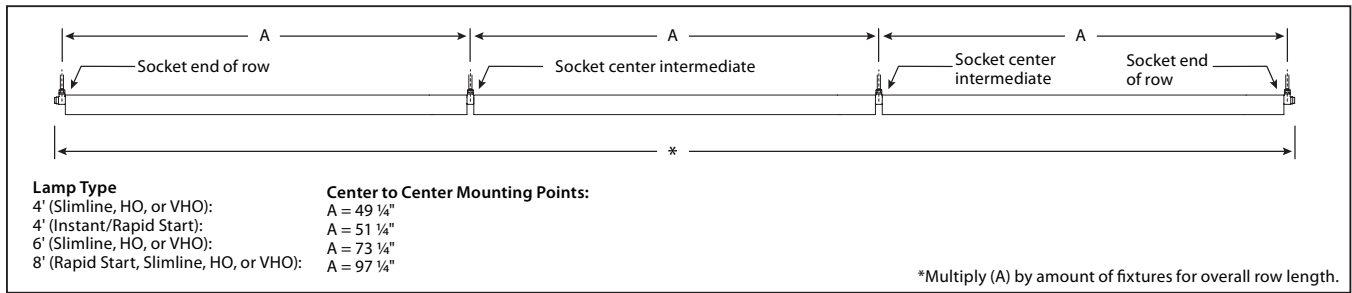
Line of sight across top of panel

Turn reflector until lamp is not visible over top of sign.

Mounting Arm Length:
Satisfactory results may be obtained in a range of 3 to 5 feet dependent on sign depth and reflector adjustment.

Position shown will give best illumination for all standard panels. If fixture is mounted closer to board or sign is very narrow, some adjusting may be required to give more even light distribution.

MOUNTING DIMENSIONS



- Columbia Lighting is not responsible for damage due to improper installation or handling.
- Use outdoor rated lamps only on outdoor applications.

WIRING DIAGRAMS (COMMON)

