

## SAVE THESE INSTRUCTIONS

INSTALLATION INSTRUCTIONS  
SMALL & LARGE VIPER - SERIES

## READ THOROUGHLY BEFORE INSTALLING

**WARNING!** Fixtures must be grounded and installed in accordance with the National Electrical Code and all local codes. Failure to do so may increase the **RISK OF PERSONAL INJURY, PROPERTY DAMAGE, FIRE AND DEATH.** Install and use so fixture failures do not cause a hazard and use only in environments for which the product is specifically marked.

**WARNING!** This product contains chemicals known to the State of California to cause cancer, birth defects, and/or other reproductive harm. Thoroughly wash hands after installing, handling, cleaning, or otherwise touching this product.

**CAUTION!** Follow ALL luminaire recommendations, product markings, instructions, restrictions and warnings regarding luminaire operation and burning position. Luminaire label shows electrical and environmental requirements and restrictions.

All electrical work must be done by a qualified electrician.

Turn off electric power to all affected circuits and allow to cool before servicing.

A regularly scheduled maintenance program should be established to retain optimum light output and reduce heat retention. Dusting with a soft, clean, dry cloth is normally sufficient for the optical system. Any accumulation of dust or dirt should be removed regularly.

Carefully read these instructions before installing product. If you do not understand these instructions, before starting any work, contact your Hubbell Lighting distributor or [techsupport@hubbell-ltg.com](mailto:techsupport@hubbell-ltg.com) or (864) 678-1000

Give instructions to facility owner/manager for future reference.

**NOTE:** This luminaire is designed for outdoor lighting applications and should not be used in areas of high ambient temperature or limited ventilation, or in enclosures.

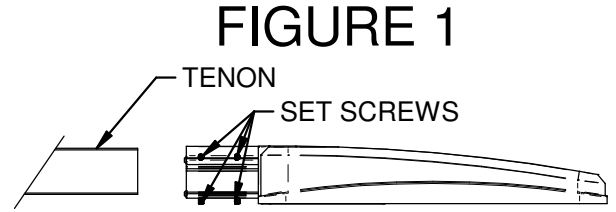
**WARNINGS:** Dangerous voltages exist within the unit and all precautions usually observed in handling voltage equipment should be observed when replacing light engine or otherwise servicing luminaires. Disregarding this warning could result in electrical shock and possible injury to the individual installing or servicing this equipment. Installation and servicing should be done by qualified personnel.

Remove all packaging materials from fixture before installing the fixture.

SAVE THESE INSTRUCTIONS

**SLIPFITTER MOUNTING** (see Fig. 1)

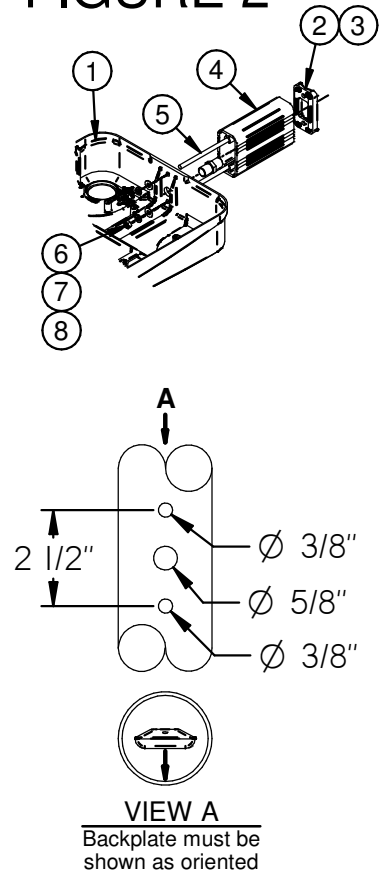
1. Luminaire is intended to be mounted to a 2 3/8" od (2" pipe size) x min. 5" long tenon.
2. Open or remove door (wiring instructions step #2).
3. With power disconnected, slip luminaire over tenon, passing field supply wires through into luminaire. Adjust the (6) set screws to level luminaire, then tighten all (6) set screws to 150 in-lb in an alternating fashion. Recheck torque on all set screws.
4. Proceed to the wiring instructions section below.



**ARM MOUNTING** (see Fig. 2)

1. Ensure that the power is disconnected.
2. Ensure that pole is drilled per the pattern at right. remove any burrs or sharp edges from the center wire way hole.
3. Insert the field supply wires through the wire way of backplate (item 2), and through the pole wire way hole. insert backplate through the top of the pole, oriented as shown, and align holes in backplate with holes in pole.
4. Insert (2) rods (items 5) through the pole holes and thread into backplate (item 2), until flush with inward-facing surface of backplate.
5. Slip adapter plate (item 3, round poles only, curved side facing pole) and rectangular arm (item 4) over the (2) rods (items 5) making sure the rods run through the extruded grooves. pass field supply wires through the arm.
6. Open or remove luminaire door (wiring instructions step #2).
7. Insert the field supply wires through the wire way hole in the luminaire housing, and the (2) rods (items 5) through the corresponding mounting holes.
8. Secure the housing to the end of the arm using (2) each flat washer, lock washer, and nut (items 6, 7 and 8). if necessary, adjust rods (item 5) so that the threads completely penetrate backplate and nuts. torque nuts to 150 in-lb.
9. Proceed to the wiring instructions section below.

FIGURE 2



**Maintenance Notes**

1. Disconnect power before servicing. note especially that drivers must be powered down at least one minute before plugging or unplugging any connectors on the output side, or led damage may result.
2. The door contains the driver(s) and transformer, if applicable, and can be removed by referring to wiring instructions step #2.  
Warning: see note 1.
3. The photocell receptacle, if so equipped, may be rotated by loosening the two screws on top, turning to desired position, and securely re-tightening screws.

SAVE THESE INSTRUCTIONS

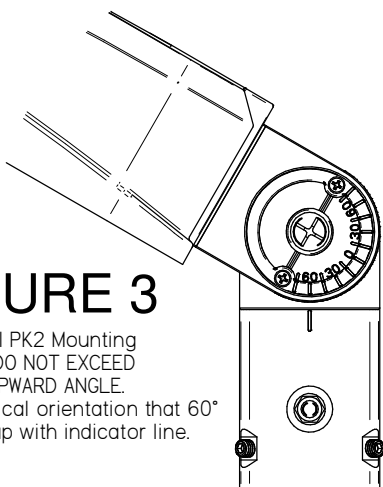
**PK2 MOUNTING** (see Fig. 3 and Fig. 4)

1. Luminaire is intended to be mounted to a 2 3/8" OD (2" pipe size) x min. 5" long tenon.
  2. Open or remove door (wiring instructions step #2).
  3. With power disconnected, slip luminaire over tenon, passing field supply wires through into luminaire. Remove knuckle cover to weave wiring through the swivel area. Adjust the (4) set screws snug tight, then torque all (4) set screws to 150 in-lb in an alternating fashion. Recheck torque on all set screws.
  4. With cover removed, loosen adjustment screw to change positioning angle, tighten screw securely and replace cover with all gaskets/seals in original position to maintain weather tightness, do not adjust over 30 degrees above horizontal.
- Fixtures with sensors should be mounted parallel with ground (horizontal) in order to not diminish range and accuracy of sensors.
5. Proceed to the wiring instructions section below.

**FIGURE 3**

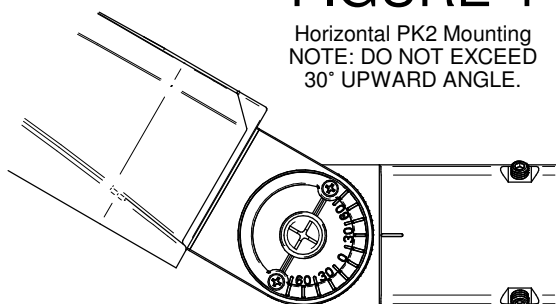
Vertical PK2 Mounting  
NOTE: DO NOT EXCEED  
30° UPWARD ANGLE.

Note that in vertical orientation that 60° should line up with indicator line.



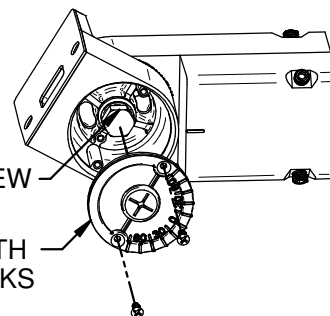
**FIGURE 4**

Horizontal PK2 Mounting  
NOTE: DO NOT EXCEED  
30° UPWARD ANGLE.



ADJUSTMENT SCREW

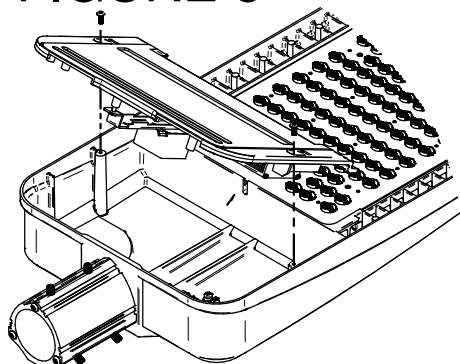
COVER WITH  
DEGREE TICK MARKS



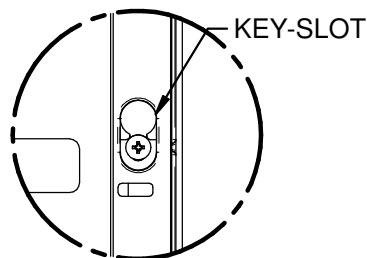
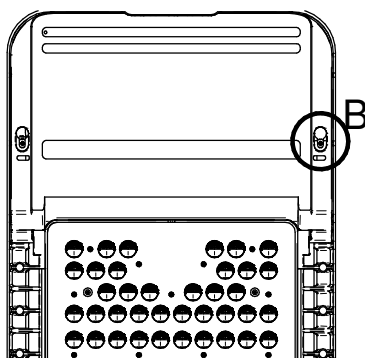
**Wiring Instructions (all mounting types)**

1. These instructions presume that the luminaire has already been mounted (as per above) with field supply wiring (from pole) extended into driver/wiring compartment. Disconnect power before performing these steps.
2. Open door by loosening two key-slotted screws, pushing door forward, and swinging down. If desired, door may then be removed by unplugging two connectors and lifting door out.
3. Check supply voltage against luminaire rating label. Supply wiring must be 12-18 gauge for use with terminal block. Strip supply wire ends 3/8"-7/16", pass through supplied open cable tie and hook up to terminal block. Refer to the factory wiring installed at the opposite side of the terminal block, matching the hot wire to factory black wire, neutral (or opposite phase) to factory white wire, and ground to factory green wire. Connection is made by pressing each terminal block tab with screwdriver or finger, inserting wire, and releasing tab. note: although there are extra spaces on the terminal block, the luminaire is not intended or rated for pass-through wiring connections.
4. Pull cable tie closed to secure wiring. Work out any slack in wiring between cable tie and pole/mounting surface.
5. If door was removed, reconnect connectors if unplugged and orient door back in housing's door track so that wiring will be inside housing when closed (see Fig. 5). Swing door to be horizontally flush with housing, sliding door backward so that screws are within slot portion of key-slot. Ensure wiring is not pinched. Tighten two key-slotted screws to 30 in-lbs each (see Fig. 6).
6. Turn on power and test luminaire.

**FIGURE 5**



**FIGURE 6**



VIEW B