

I-210 Meter Family

with 320 Amp Service Switch



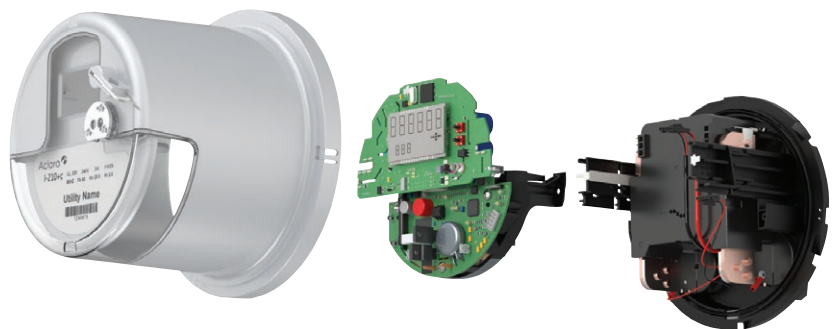
Aclara is proud to introduce the I-210 Meter Family with a 320-amp Remote Service Switch.

The integrated 320-amp service switch will allow utilities to offer the same services and rate programs across all residential customers. In addition, the utility can enable common operational work practices to safely manage all of their residential customers. The functionality and features of the existing I-210 meter carry directly over to this solution - no modification of configurations necessary.

The I-210 meter with 320-amp Service Switch is available for order from Aclara distributors and sales representative.

Key Features

- 5,000 Operations @ Full 320A
- Industry Compliant
- UL Certification (UL2735)
- Load Management Configurations
- Robust design and testing
- Diverse integrated AMI options



I-210 CL320 RD Meter

Advanced Configuration

The I-210 family of meters is designed for configurable options for specific data needs and complex rate requirements.

- Optional advanced functions available such as:
 - Reactive power measurement for power factor rate applications*
 - Power quality and event logging for specific case investigations*
 - Supports up to 8 channels of Load Profile data*
- Remote Disconnect (RD) option improves operational efficiency and adds options like:
 - Demand side management
 - Prepay configuration
 - Controlled outage restoration
- Tamper detection tools that show:
 - Errors
 - Wiring changes
 - Billing issues

*I-210+c Only

Reliability

- Over 130 years of designing and building high-quality, accurate, and reliable meters
- Highly Accelerated Life Testing (HALT) assures reliability over the life of the meter
- Industry leading software suite, MeterMate™, eases configuration effort and increases diagnostic details for lower operational costs

Communications

- Broad AMI options including:
 - Radio frequency point-to-multipoint
 - Power line communications
 - Cellular communications
 - Radio frequency mesh (RF Mesh)
- Rigorous validation of AMI integration to ensure reliability and control cost of ownership

	Form	Class	Volts
Available Forms	2S	320	240
	12S	320	120 & 240
	25S	320	120 & 240
Accuracy	Exceeds +/- 0.5% certified class accuracy		
	Typically within +/- 0.2%		
	Starting Watts 6W @ 120V Typical Watt Loss: 0.7W		
Frequency	50Hz or 60Hz		
Temperature	-40°C to 85°C		
	<95% relative humidity		
Dimension	6.95" DIA X 6.75" H		
Weight	3.9 lbs		
Service Switch	5,000 operations at full rated current (320A)		
	30,000 operations at test amp rating (50A)		
Standards	ANSI C12.1		
	ANSI C12.10		
	ANSI C12.18		
	ANSI C 12.19		
	ANSI C12.20		
	UL 2735		
	FCC Class B Emissions		



A proud member of the Hubbell family.

© 2023 Aclara. All rights reserved.
Hubbell and the Hubbell logo are registered trademarks or trademarks of Hubbell Incorporated. All other trademarks are the property of their respective owners.
Aclara.com | 800-297-2728 | info@aclara.com
Follow us on Twitter @AclaraSolutions

ACL-ACLM-SF-EN-00710 03/2023

