



I-210+c L-Model

The Power of Performance in a Small Package

This compact I-210+c is optimized for cases where a utility has a deployed AMI system and a number of locations where a meter socket and meter will not fit.

Without a compatible AMI meter, the benefit of the AMI is not fully realized. The I-210+c L-Model fits many of these challenging situations where a socket is not practical.

The I-210+c L-Model performs identically to the I-210+c socket meter. The reduced size and mounting options simplify installation and lower the installation cost.

This meter also solves challenges with new loads such as EVs and distributed energy resources (i.e. solar, battery, etc.)

Key Features

- Socket-free installation
- Industry compliant
- UL certification (UL2735)
- Load Management configurations
- Robust Design and Testing
- Diverse integrated AMI options

I-210+c L-Model

Advanced Configuration

This I-210+c is Aclara's flagship residential meter product, offering demand, load profile, TOU, service switch, and communication options.

- Optional advanced functions available such as:
 - Reactive power measurement for power factor rate applications
 - Power quality and event logging for specific case investigations
 - Supports up to 8 channels of Load Profile data
- Remote Disconnect (RD) option improves operational efficiency and adds options like:
 - Demand side management
 - Prepay configuration
 - Controlled outage restoration
- Tamper detection tools that show:
 - Errors
 - Wiring changes
 - Tampering
 - Billing issues

Reliability

- Over 130 years of designing and building high-quality, accurate, and reliable meters
- Accelerated Life Testing assures reliability over the life of the meter
- Industry leading software suite, MeterMate™, eases configuration effort and increases diagnostic details for lower operational costs

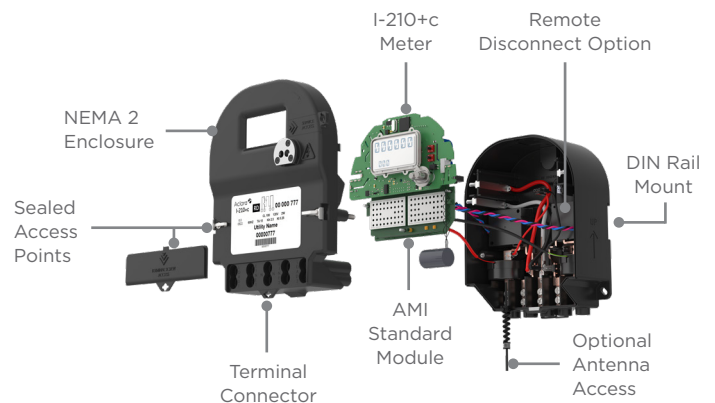
Communications

- Broad AMI options including:
 - Radio frequency point-to-multipoint
 - Power line communications
 - Cellular communications
 - Radio frequency mesh (RF Mesh)
- Rigorous validation of AMI integration to ensure reliability and control cost of ownership



A proud member of the Hubbell family.

Available Connections	Terminal Block Connections 2 wire configuration (4 terminal) - 1L 3 wire configuration (5 terminal) - 12L
Accuracy	Exceeds +/- 0.5% certified class accuracy Typically within +/- 0.2% Starting Watts: 6W @ 120V; 12W @ 240V
Frequency	50Hz or 60Hz
Temperature	-40°C to 85°C <95% relative humidity
Dimension	5.25"W x 3.00"D x 7.00"H
Weight	1.73 lbs
Mounting Option	DIN Rail Type T35 (35mm x 7.5mm) Keyhole 3-screw Mount NEMA 2 enclosure
Standards	ANSI C12.1* ANSI C12.10* ANSI C 12.19 ANSI C12.20* ANSI C37.90.1 UL 2735 FCC Class B Emissions * as applicable to form factor



© 2023 Aclara. All rights reserved.
Hubbell and the Hubbell logo are registered trademarks or trademarks of Hubbell Incorporated. All other trademarks are the property of their respective owners.
Aclara.com | 800-297-2728 | info@aclara.com

ACL-ACLM-SF-EN-00892 07/2023

