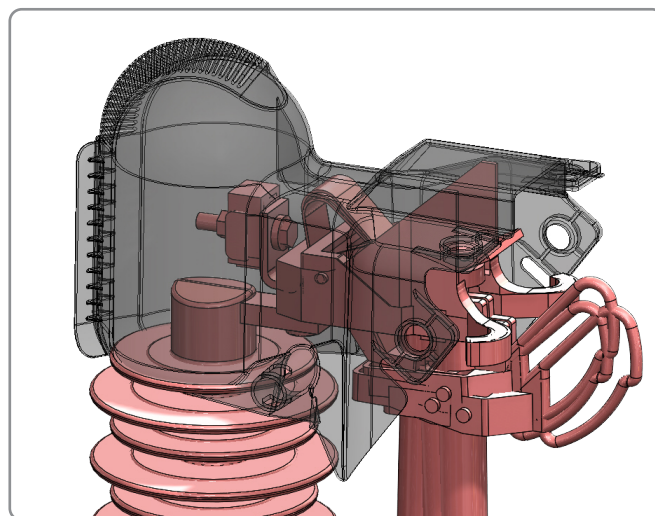
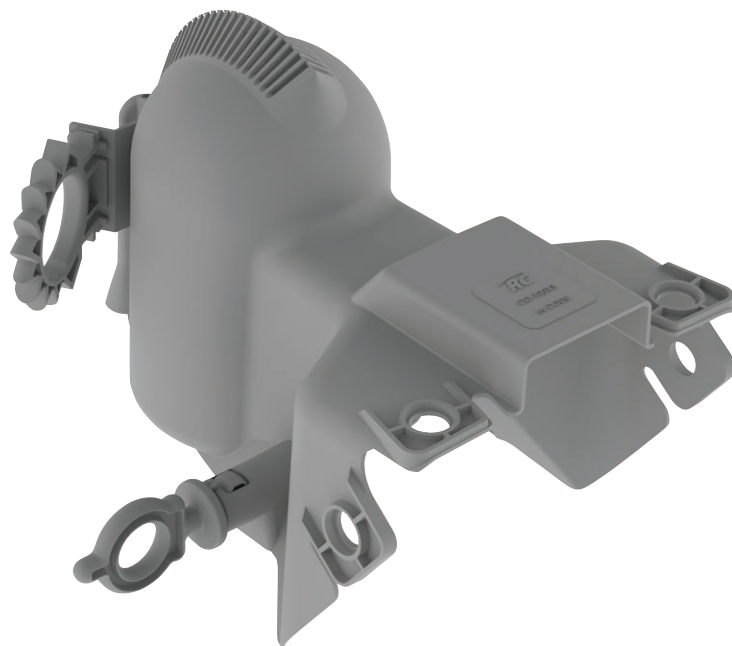


Powerfuse Cutout Guard

Powerfuse cutouts are commonly used in place of standard expulsion fuse cutouts in areas with high wildfire risk. Like other distribution equipment, their close proximity to grounded support structures can pose a significant risk of wildlife contact. Wildlife contact with the energized terminal can result in a power outage, equipment damage and possibly a wildfire. The innovative, hotstick installable Reliaguard Powerfuse Cutout Guard protects these energized risk points and prevents wildlife caused flashovers, power outages and potential wildfires.

Features

- Hotstick Installable from either side
- Positive front closure to prevent wildlife ingress
- Large cable opening with overlapping fingers
- Won't interfere with larger end of stick tools
- Wind retention to 60+ mph
- V-O flammability rating



Description	Part Number	Pack Size (MOQ)
Powerfuse Cutout Guard Kit	CO10014K	24

*Kits include guard, front closure clip and retention pin

For product inquiries, please contact your local sales representative or customer service representative.



A proud member of the Hubbell family.

©2023 Hubbell Power Systems. All rights reserved.
Hubbell and the Hubbell logo are registered trademarks or trademarks of Hubbell Incorporated. All other trademarks are the property of their respective owners.
210 N. Allen Centralia, MO 65240 | (573) 682-5521
www.hubbellpowersystems.com | Email: hpscs@hubbell.com