





Hubbell Power Systems, Inc. is a global manufacturer and supplier of distribution products, capable of providing more than 85% of what you find on a typical distribution pole. Every one of our products meets or exceeds ANSI standards and are backed by our industry leading warranty. We design, manufacture and market quality products to meet technical and functional specifications and exceed customer expectations.





City Centralia, MO

Brands CHANCE®

Ask us about Buy America



ANCHORS

TOUGH-ONE® EARTH ANCHORS

- Industry leader in anchoring for over 100 years
- Complete line of anchors to serve your guying needs in all types of soil
- Engineering support to help provide anchor design and installation guidance
- Resources include our Encyclopedia of Anchoring, soil conditions app and extensive video tutorial library

CHANCE® ANCHORS are manufactured in the US and stamped for steel traceability

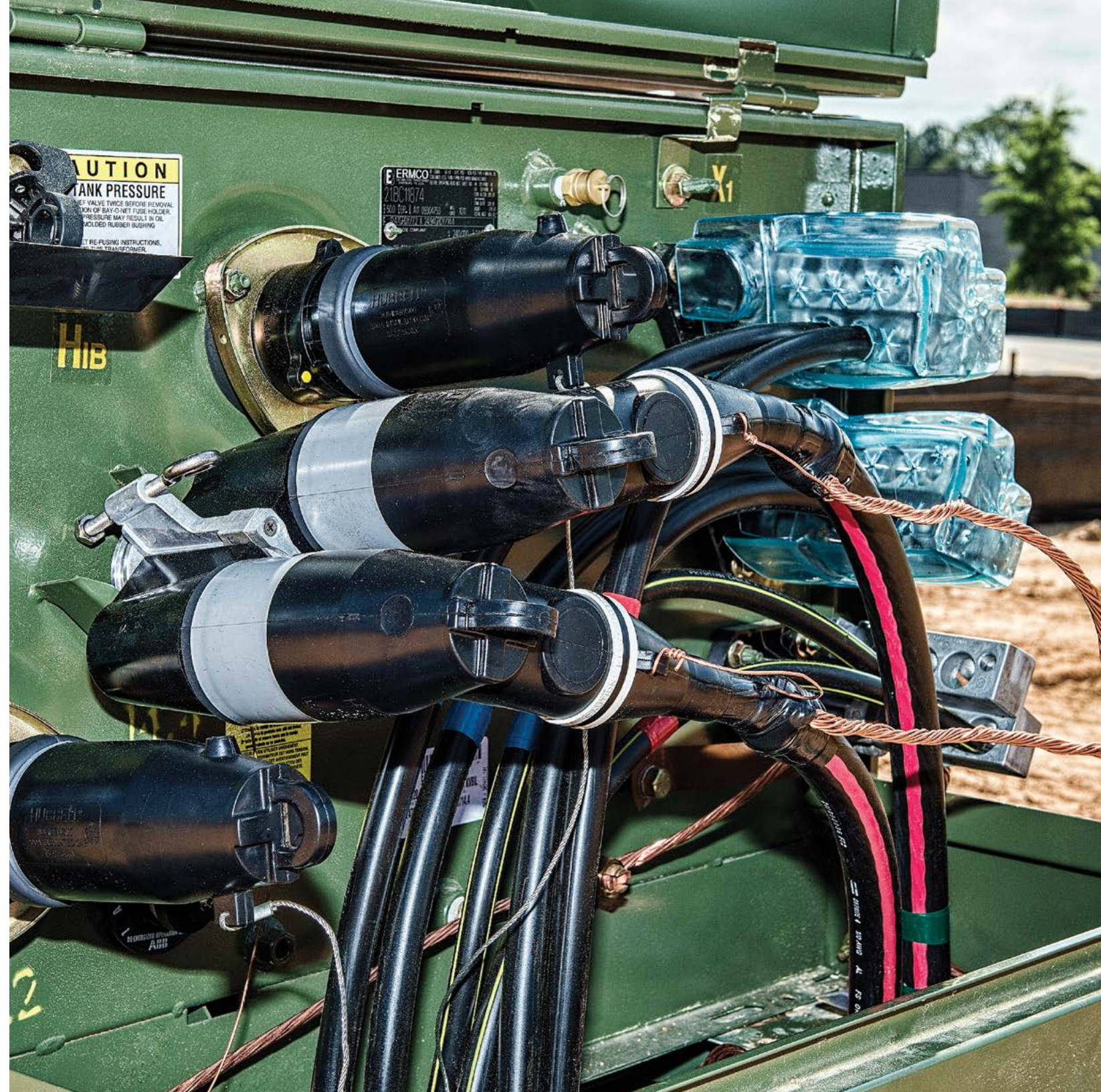
CABLE ACCESSORIES

Aiken, SC | Hubbell®

- 200A loadbreak and 600A deadbreak cable accessories offer a wide range of underground separable connection options
- EPDM elastomers supply stress protection under extreme conditions and contribute to reliable, long-time operation
- Integral jacket seal elbows provide a unique method to seal the outer jacket of underground cable. Available in 15kV and 25kV designs that eliminate the need for separate seal kits
- Hubbell elbow arresters have two separately molded chambers that ensure moisture protection and full compliance to industry standards in addition to their superior operating performance on underground electrical systems

A FIBERGLASS WRAP IS USED

to ensure that the MOV block stack remains in one piece and prevents the blocks from breaching the side wall should the arrester fail.





CONNECTORS

OVERHEAD DISTRIBUTION

- The most complete line of distribution connectors, fittings, and compression products in the electric utilities industry
- Industry leader in specialized connectors offering corrosion resistant automatic splices, for harsh environments
- Formed wire products offer many solutions to meet your distribution needs
- Your industry resource for time proven products like deadends, splices taps, and guying products

UNDERGROUND DISTRIBUTION

- Providing secondary underground products for pad mount transformers
- FARGO® Universal Toggle Latch stud connectors use an innovative latching mechanism that increases the actual contact interface between the transformer stud and stud bar which improves conductivity and operating temperature
- FARGO® offers a full line of slip fit straight and z-bar configuration stud bars for most applications



City Leeds, AL
Brands Anderson™ and FARGO®

ENCLOSURES

Lenoir City, TN | Rocky Mount, NC | Palatka, FL | Juarez, MX

Quazite®, Polycast®, PenCell®, Hot Box® and Hubbell®

Hubbell's diverse family of Underground Enclosures includes Quazite Polymer Concrete, Quazite FRP, and PenCell Plastic. Our designs provide strength and lasting value. Weight reduction over traditional concrete vaults significantly reduces our customers' installation time. We also manufacture fiberglass, plastic and metal sectionalizing cabinets as well as secondary pedestals. After working closely with our customers over the years to understand their needs, we have created a complete assortment of standard sizes and configurations. In addition to a robust line of standard enclosures, we can also engineer an above ground or underground enclosure for customer specific needs.

Hubbell's underground enclosures are rated for

TIERS 5, 8, 15 & 22

Hubbell also can also pre-install the necessary connectors and components required to complete a project. This added service allows our customers to maximize their team's productivity in the field. Enclosures can ship with hardware pre-installed, and with their accompanying box pads or ground sleeves to minimize installation complexity. Providing our customers with turnkey customized enclosure solutions helps everyone accomplish their goals in less time with lower costs.





FUSING

Juarez, MX | Wuhu, CN | Chance®

EXPULSION FUSED CUTOUTS

- Full line of porcelain and polymer cutouts with industry leading performance and in ratings 15kV through 38kV
- Standard, link break, load break, and arrester combination units available
- Interchangeable with S&C (MPS) type XS and ABB type ICX
- Synthetic fuse tube liner which allows for consistent interruption not dependent on changing moisture absorption rates
- Porcelain and Polymer units meet ANSI/IEEE design test standards
- Polymer cutouts also meet CSA 310-09
- Internal testing capabilities for testing to industry standards
- 50 years experience in cutout manufacturing technology
- 30 years experience in polymer compounding technology

FUSES

- Conforms to all applicable ANSI/IEEE specifications
- Chance links are available with a removable or solid buttonhead
- Fuse speeds are available in K, T, MS, and SloFast
- The Chance SloFast fuse link provides both transformer protection and system protection thereby reduced losses and greater utilization of transformer investment dollars





INSULATORS & ARRESTERS

Aiken, SC | Wadsworth, OH

OPTIMA® ARRESTERS

- Patented isolator design to ensure proper detonation of the disconnect that prevents line lockouts from occurring
- Low failure rates
- Reliable operations
- Over 30M in service

VERI*LITE™ POLYMER DEADEND INSULATORS (PDI)

- Latest in polymer design and manufacturing
- Light-weight design
- DS Class ratings according to ANSI C29.13 and CSA C411.5

VERI*LITE™ SUSPENSION (VLS)

- Equivalent to 5 3/4" x 10" or 4 1/4" x 6 1/4" porcelain bells

VERI*LITE™ LINE POST (VLLP)

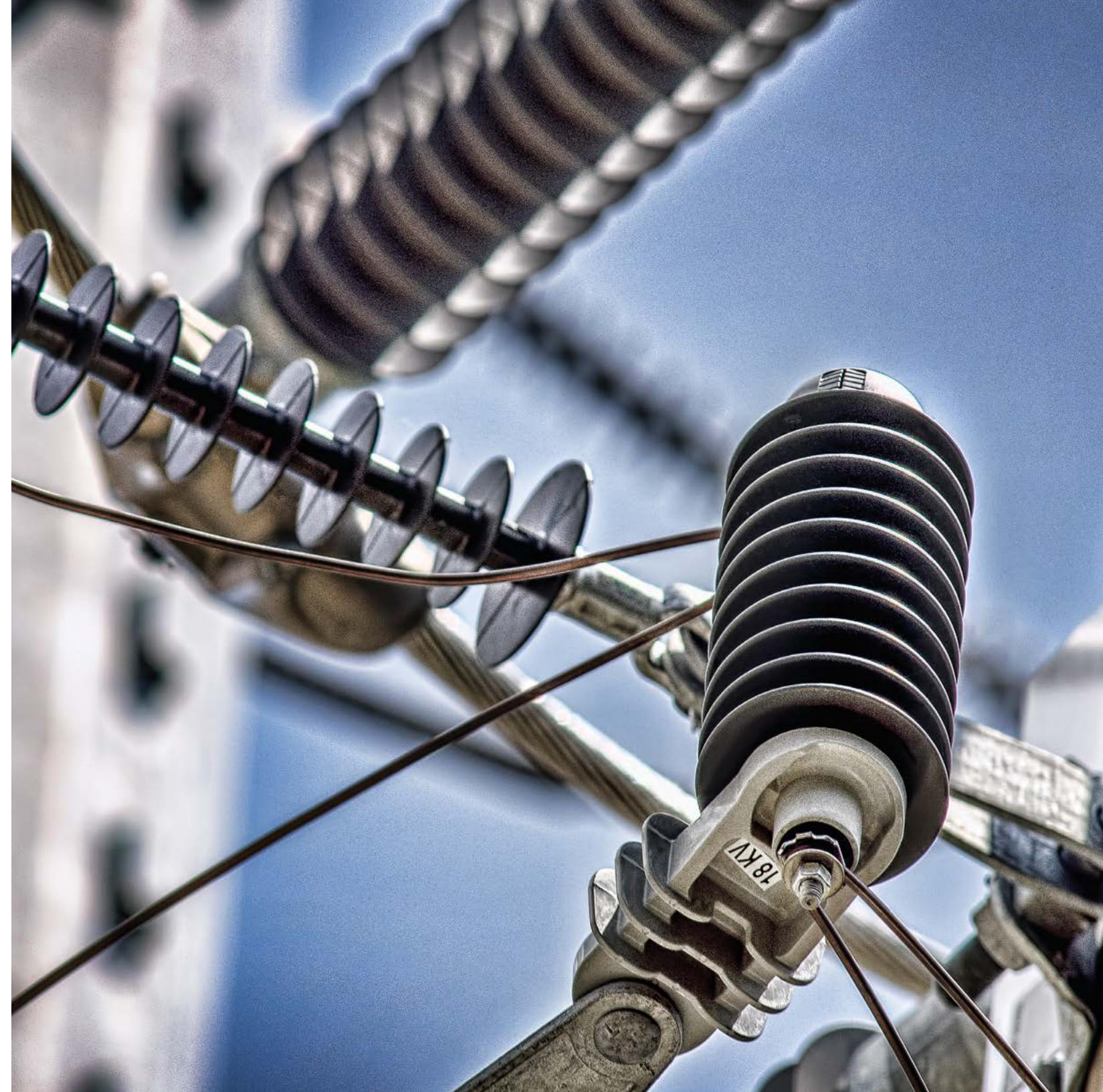
- Meets or exceeds ANSI C29.18 and CSA C411.6

All use fiberglass rod made with highest quality glass and epoxy resins

Weathersheds are made with proprietary ESP and Silicone Rubber formulations

In-house Test Lab

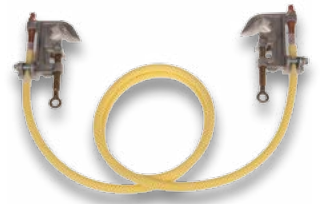
Brands Ohio Brass®





City Centralia, MO

Brands CHANCE®



LINEMAN GRADE TOOLS™

- Full-line supplier of temporary grounding equipment and industry leader in technological advancements
- Full-line supplier of insulated hotsticks, including Grip-All® clamp sticks, telescoping sticks, disconnect sticks and hard and flexible cover-up
- Rubber protective equipment including insulated blankets, line hose, and a large selection of low and high voltage rubber gloves and sleeves
- All distribution hot sticks are tested in accordance with ASTM and IEC standards



POLE LINE HARDWARE

Centralia, MO | CHANCE®

OVERHEAD DISTRIBUTION HARDWARE

- Pole line hardware for every area of overhead distribution construction

Insulator hardware - Pins and brackets for mounting pin and post type insulators

Deadend hardware - Guy attachments, thimbles, eyenuts and associated products used in guy and conductor deadend construction

Riser pole hardware - Conduit brackets and cable guards for riser applications

Equipment brackets - Brackets specifically designed for mounting virtually any piece of distribution equipment

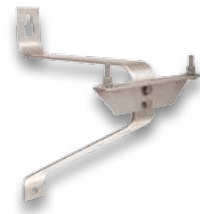
Grounding products - Copper bonded and galvanized steel ground rods, clamps, ground wire molding and staples used in system grounding

Service and secondary hardware - Spool insulators, clevises and service attachments

Fasteners - Bolts, washers, lag screws and staples that are specific to distribution construction

Pole and crossarm accessories - Wood and steel braces, pole and crossarm gains and pole steps

- Maintaining inventory for best in industry service levels
- Proven storm response backed by in-house manufacturing capabilities
- Ability to satisfy "Buy America" certification requirements
- Responsive to special product request





SWITCHING PRODUCTS

OVERHEAD DISTRIBUTION

- Complete line of overhead single phase, by-pass and gang operated switches with industry leading features and benefits, in ratings 15kV through 38kV
- Fully programmable single phase Versa-Tech® recloser to improve system reliability and reduce inventory in ratings through 25kV
- Single phase and three phase programmable electronic sectionalizer for improved system coordination and reliability

UNDERGROUND DISTRIBUTION

- Quality air-insulated, deadfront switchgear available in 15kV and 25kV in variety of switch/fuse configurations and options
- Complete line of pad-mount primary metering enclosures for both single- and three-phase applications up to 35kV
- Pad-mounted enclosures suitable for low voltage splicing or cable termination from the secondary side of a utility's transformer for multiple service feeds

SYSTEM AUTOMATION

- Automation options for both overhead and underground switch to meet your automation needs
- VTU for connecting VersaTech Reclosers to SCADA

POWER FACTOR CORRECTION

- A full line of medium voltage capacitor banks for both pole- and pad-mounted applications, in both fixed and switched versions
- Broadest line of capacitor switches ranging from economical oil switches to maintenance-free solid dielectric vacuum switches including zero voltage close capacitor switches

City Centralia, MO/Leeds, AL/Menomonie Falls, WI

Brands CHANCE®, Hubbell® & Trinetics®



City Leeds, AL
Brands Anderson™ and FARGO®



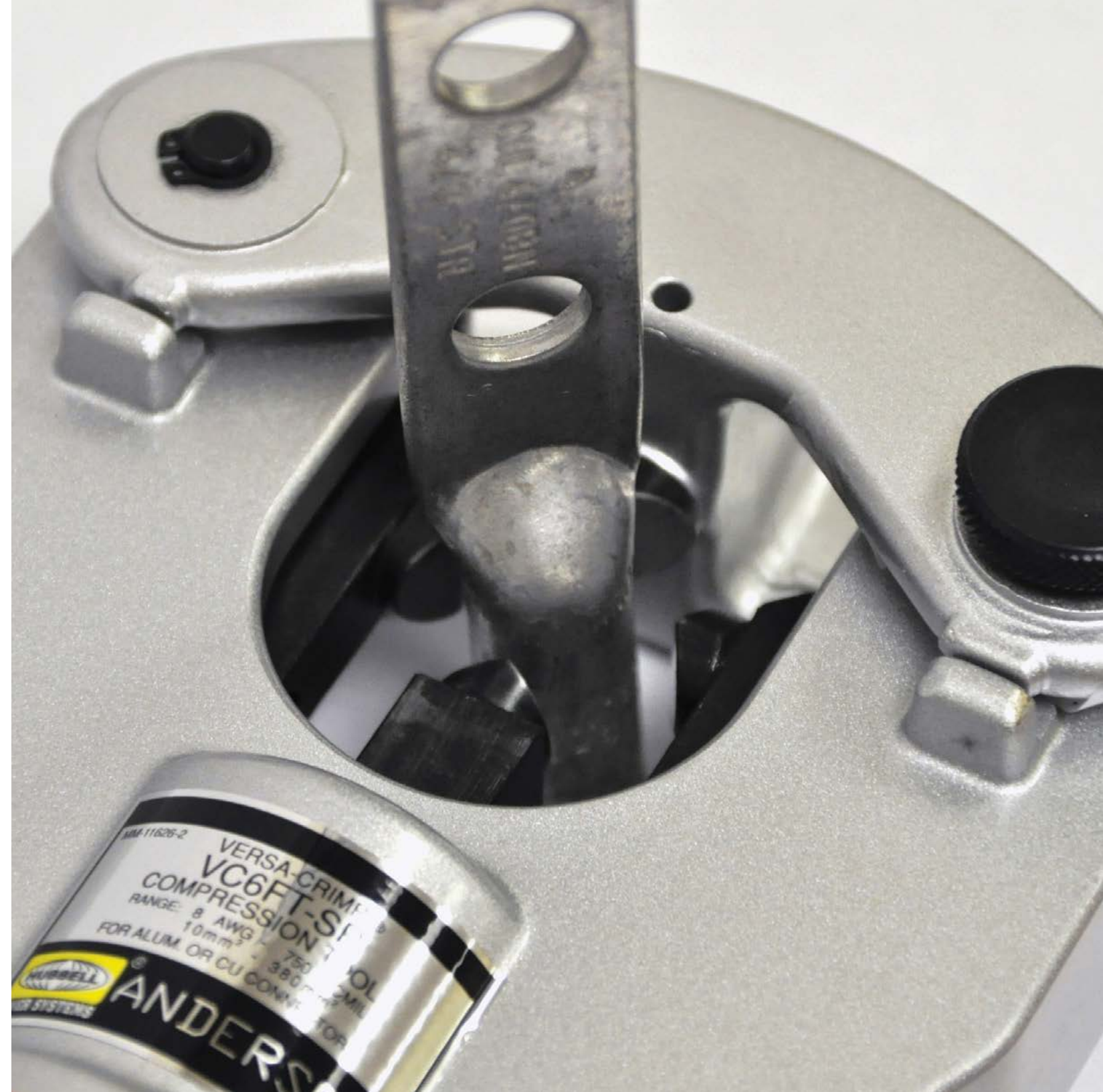
TOOLS

VERSA-CRIMP® COMPRESSION TOOLS & CUTTERS

- Reduce inventory by using one connector to adapt to a variety of different conductor sizes
- New hand tools have a two stage hydraulic pump for faster nib closure
- Two head design in both hand and battery pack tools; open and flip top. Both with rotating heads
- Both heads have a range of #10 Stranded to 750 MCM AL/CU
- Battery powered tools have lithium batteries for long life
- Battery powered cutting tool has replaceable blade

FARGO® SPEED WRENCHES

- Configurations available in nearly every possible combination
- Rugged polypropylene handle provides a solid gripping surface that separates tool ends for accidental contact protection
- Vinyl covered handles do not offer accidental contact protection





HEAT TEAM

WHEN A STORM IS MOVING, CUSTOMER SERVICE IS TOO.

The Hubbell Emergency Action Team (HEAT) works around the clock alongside our distributor partners and customers to do whatever it takes to get product where it's needed.

The Hubbell Power Systems customer service team is our first responder. Based in Centralia, MO, alongside our 400,000 square foot distribution center, the HPS customer service team provides centralized support for more than 40,000 products and around-the-clock coverage during hurricanes, ice storms and major disasters. Throughout the effort, we monitor estimated time of product arrival by satellite communications to ensure you get what you need, where you need it, as expected. 14 years of service, rest assured, we are here when you need us most.

CUSTOMER SERVICE

HUBBELL POWER SYSTEMS CUSTOMERS CAN RELY ON THE EXPERIENCE AND SUPPORT OF OUR GLOBAL CUSTOMER SERVICE TEAM.

We implement around-the-clock coverage when our customers need us most by proactively monitoring accounts and keeping a watchful eye on weather, natural disasters and other industry threats that may cause a disruption of service to your customers. Our e-commerce suite provides an efficient and transparent way of doing business. With vendor managed inventory, you have the reassurance of knowing you will have your products when you need them. At Hubbell Power Systems, service and support is a responsibility that belongs to everyone in the company. Our technical staff is one of the most experienced in the industry and is always available to do whatever it takes to get the job done.





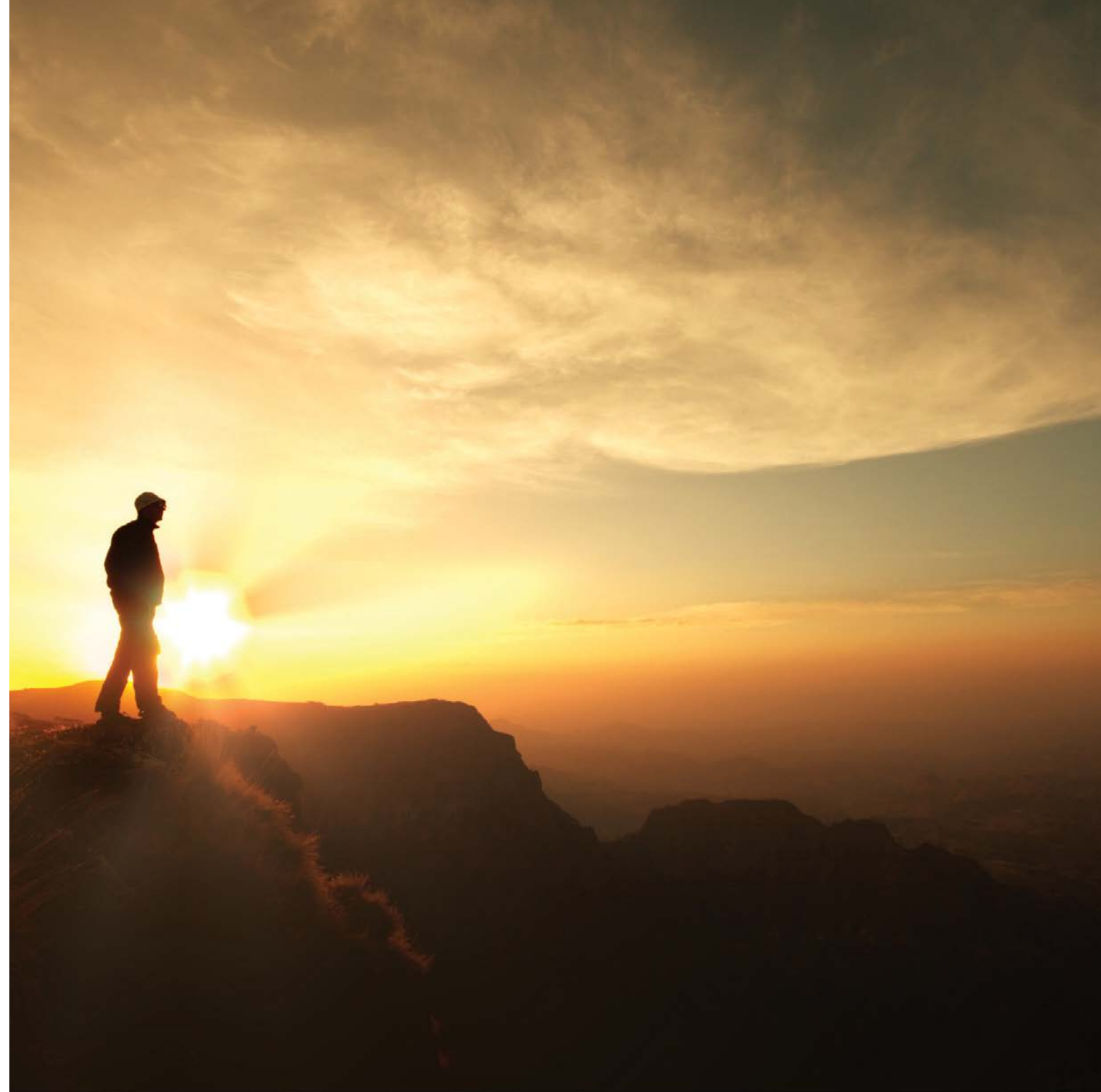
DISTRIBUTION CENTER

OUR 400,000 SQ FT DISTRIBUTION CENTER is centrally located in Centralia, MO, providing the fastest storm response in the industry. Our distribution center proudly ships with 99.9% accuracy. Each year our staff receives, stores and ships more than 40,000 product SKUs. We anticipate the needs of our customers, ensuring the stock you need is available and shipped on time.

WE ARE WORKING TOWARD THE FUTURE

by investing in people and facilities and by bringing the value-added products and services our customers need today and into the future.

FORWARD THINKING At HPS we know the benefit of using Smart Grid technology, and we are actively developing products to help our customers meet the demands of the 21st century. Our Versa-Tech® Reclosers provides a versatile vacuum recloser option with no auxiliary power required. It is remotely programmable and can connect to a Scada systems using our VTU. Our single and three phase programmable electronic sectionalizers can be programmed to desired settings. Both products can greatly reduce inventory for utilities.





HUBBELL POWER SYSTEMS FAMILY OF BRANDS

ANDERSON™ | CHANCE® | DELMAR® | HUBBELL® | OHIO BRASS® | PCORE® | ELECTRO COMPOSITES™
FARGO® | HOT BOX® | OPTI-LOOP™ | PENCELL® | POLYCAST® | QUAZITE® | USCO™