

Please select your trailer size on pages 2 and 3. Select options on pages 5 and 6. Complete the order sheet on page 7. Save the form to your computer and email to: hpsliterature@hubbell.com

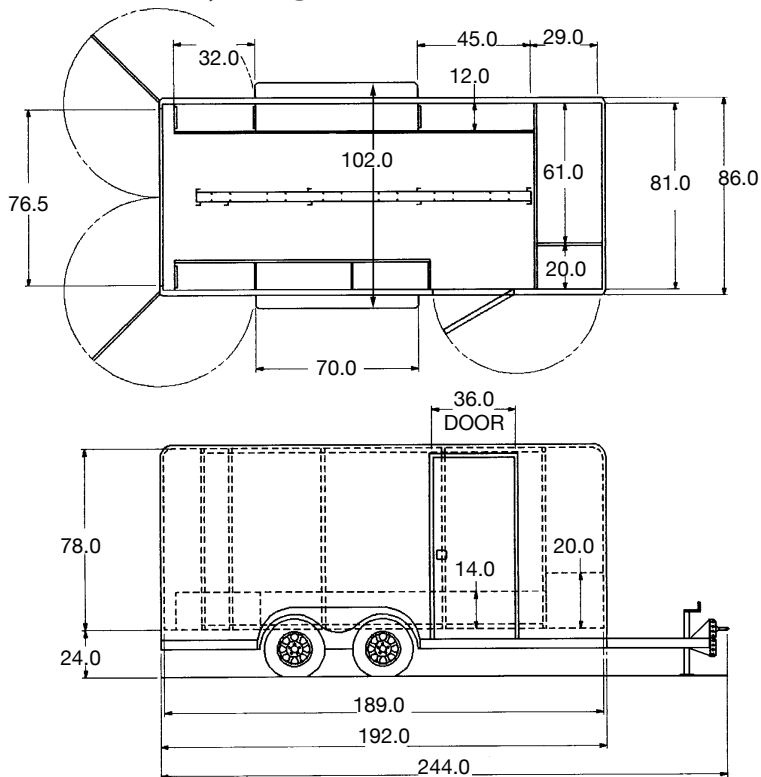
CHANCE[®]



Walk-In Tool Trailers | • 16-foot and 20-foot tandem models
• Standard and Optional features

Specifications 7' Wide Trailer

16-ft. (body-length) Trailer

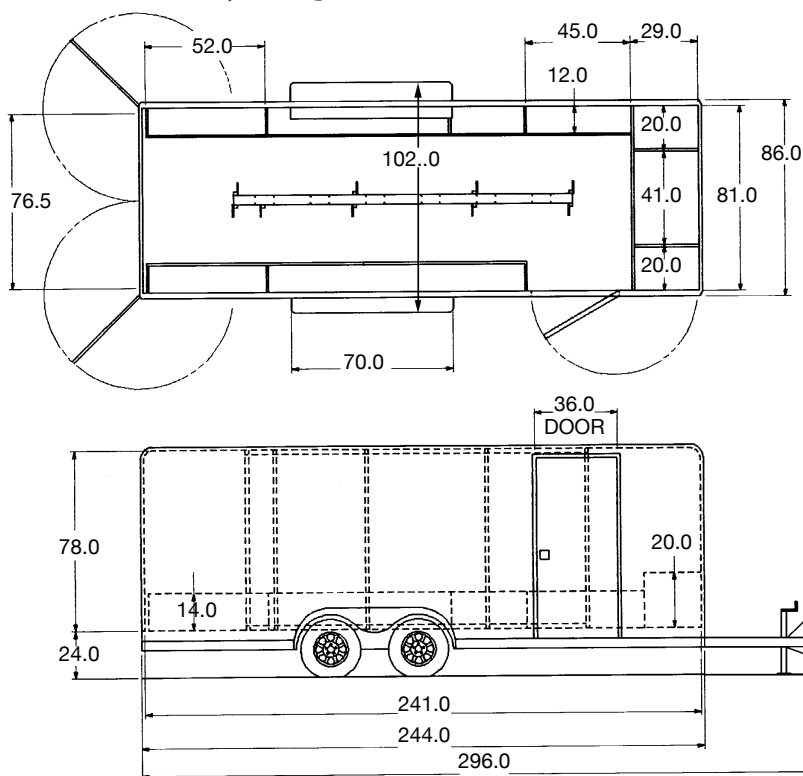


Trailer gross vehicle weight 7,000 lb.
 Tandem axles 3,500 lb. capacity, each
 Trailer curb weight, empty 2,270 lb.
 Payload capacity 4,730 lb.
 Brakes Electric, all four wheels
 Tires 15", load range C
 Hitch weight, empty 230 lb.
 Hitch with safety chains... 3" pintle or 2⁵/₁₆" ball
 Hitch height Adjustable, 19" through 27"
 Tongue jack Manual crank with sand pad
 Exterior lights and reflectors
 Prefinished (white) aluminum skin 0.30" gauge
 Interior floor Plywood
 Interior walls are vinyl coated white.
 Breakaway system & battery (meets DOT)

Standard Storage Provisions

- 14"-deep bins (both sides), 20"-deep front bins
- Rack for 30 universal tools (left, overhead)
- Ladder-rack channel (center, on floor)
- Full-height tool racks (center-mounted), 150 plastic-coated supports & 29 elastic tiedowns

20-ft. (body-length) Trailer



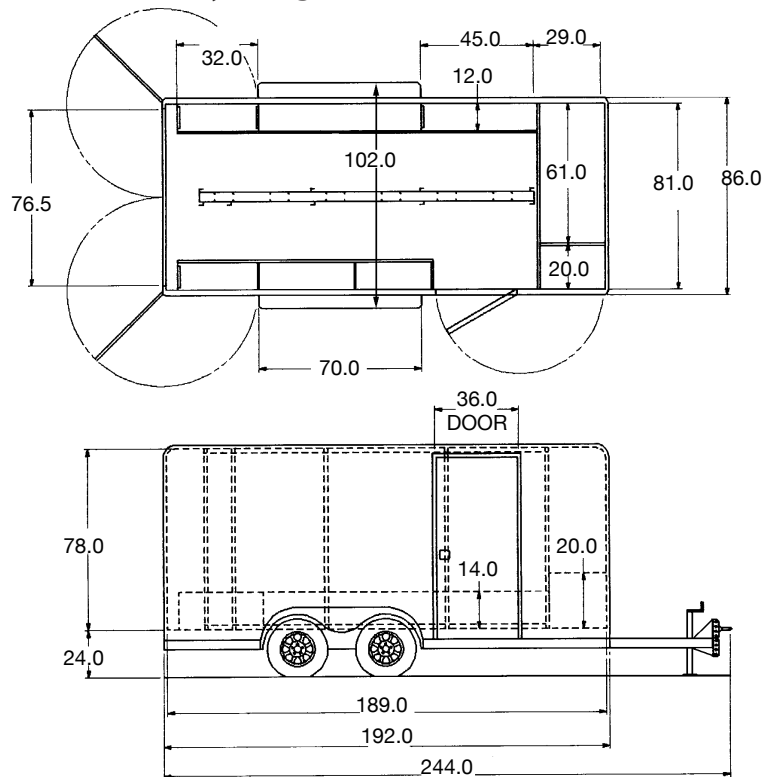
Trailer gross vehicle weight 7,000 lb.
 Tandem axles 3,500 lb. capacity, each
 Trailer curb weight, empty 2,770 lb.
 Payload capacity 4,230 lb.
 Brakes Electric, all four wheels
 Tires 15", load range C
 Hitch weight, empty 280 lb.
 Hitch with safety chains... 3" pintle or 2⁵/₁₆" ball
 Hitch height Adjustable, 19" through 27"
 Tongue jack Manual crank with sand pad
 Exterior lights and reflectors
 Prefinished (white) aluminum skin ..0.30" gauge
 Interior floor Plywood
 Interior walls are vinyl coated white.
 Breakaway system & battery (meets DOT)

Standard Storage Provisions

- 14"-deep bins (both sides), 20"-deep front bins
- Rack for 30 universal tools (left, overhead)
- Ladder rack channel (center, floor)
- Full-height tool racks (center-mounted), 150 plastic-coated supports & 29 elastic tiedowns

Specifications 7'9" Wide Trailer

16-ft. (body-length) Trailer

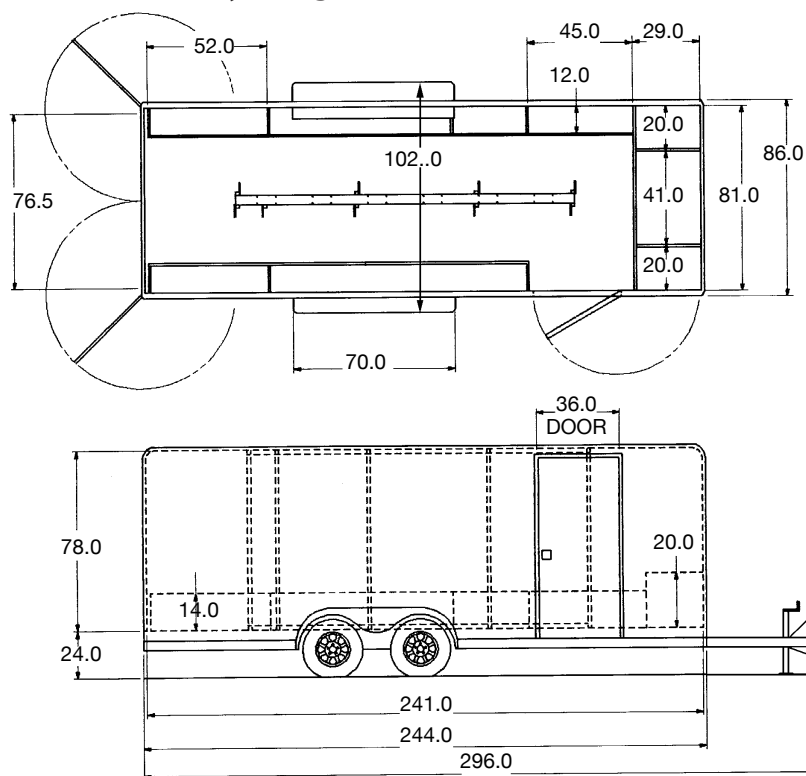


Trailer gross vehicle weight.....7,000 lb.
 Tandem axles.....3,500 lb. capacity, each
 Trailer curb weight, empty2,570 lb.
 Payload capacity.....4,430 lb.
 Brakes..... Electric, all four wheels
 Tires..... 15", load range C
 Hitch weight, empty260 lb.
 Hitch with safety chains... 3" pintle or 2⁵/₁₆" ball
 Hitch height..... Adjustable, 19" through 27"
 Tongue jack Manual crank with sand pad
 Exterior lights and reflectors
 Prefinished (white) aluminum skin 0.30" gauge
 Interior floor..... Plywood
 Interior walls are vinyl coated white.
 Breakaway system & battery (meets DOT)

Standard Storage Provisions

- 14"-deep bins (both sides), 20"-deep front bins
- Rack for 30 universal tools (left, overhead)
- Ladder-rack channel (center, on floor)
- Full-height tool racks (center-mounted), 150 plastic-coated supports & 29 elastic tiedowns

20-ft. (body-length) Trailer



Trailer gross vehicle weight.....7,000 lb.
 Tandem axles.....3,500 lb. capacity, each
 Trailer curb weight, empty2,860 lb.
 Payload capacity.....4,140 lb.
 Brakes..... Electric, all four wheels
 Tires..... 15", load range C
 Hitch weight, empty290 lb.
 Hitch with safety chains... 3" pintle or 2⁵/₁₆" ball
 Hitch height..... Adjustable, 19" through 27"
 Tongue jackManual crank with sand pad
 Exterior lights and reflectors
 Prefinished (white) aluminum skin ..0.30" gauge
 Interior floor.....Plywood
 Interior walls are vinyl coated white.
 Breakaway system & battery (meets DOT)

Standard Storage Provisions

- 14"-deep bins (both sides), 20"-deep front bins
- Rack for 30 universal tools (left, overhead)
- Ladder rack channel (center, floor)
- Full-height tool racks (center-mounted), 150 plastic-coated supports & 29 elastic tiedowns

CHANCE[®] Walk-In Tool Trailers



Your new Walk-In Tool Trailer will provide a convenient way to store, transport and care for your Hot Line Tool sets.

Standard lengths of 16 and 20 feet offer headroom of 6 feet-6 inches.

A 7,000-lb. gross vehicle weight rating gives the trailer ample capacity for your job requirements.

Standard Equipment

CHECKLIST

Interior Tool Storage

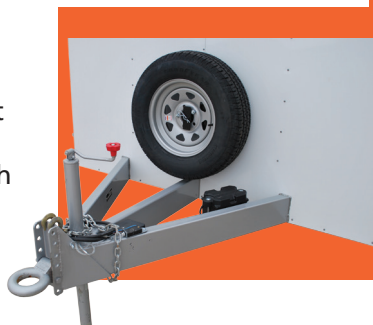
- ✓ Full Length storage bins on both sides and across front
- ✓ Overhead rack and thumbscrews for 30 universal tools (Left side)
- ✓ Two full-height center racks
- ✓ Ladder channel on floor between center racks

Exterior and Towing

- ✓ Breakaway braking system
- ✓ Spare tire with mounting bracket
- ✓ Adjustable height pintle eye hitch
- ✓ Fold-up hand crank tongue jack
- ✓ Two safety chains

Standard features include:

- Corrosion-resistant aluminum exterior
- Tandem axles
- Electric Brakes
- Dual rear doors
- One curbside door
- Tongue mounted spare tire
- Center Interior racking for tool storage
- White exterior finish
- 7-way 12V Trailer End Connector



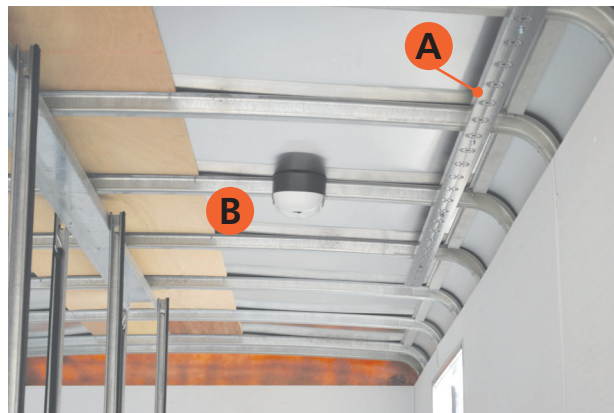
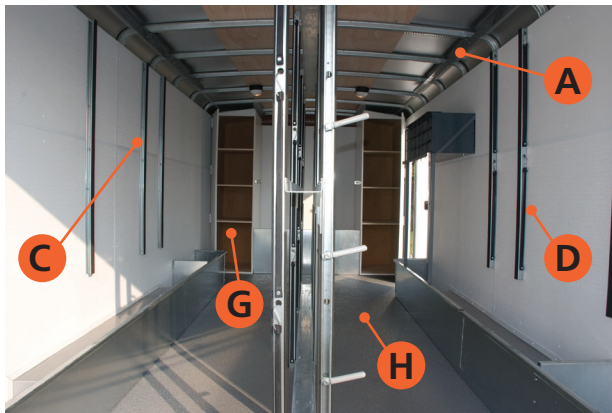
Optional Equipment CHECKLIST

In addition to the Standard features and equipment, Walk-In Trailers can be custom ordered with the Options listed below.

Please check the boxes on these two pages to select Options or just get in touch with us to help.

Interior Tool Storage OPTIONS

- A. Second overhead rack and thumbscrews for 30 universal Tools (Right side)
- B. 12Vdc interior lights with two wall switches, select only one option:
 - 1 pair of lights
 - 2 pairs of lights
 - 3 pairs of light
 - 4 pairs of lights
- C. Wall mounted tool rack with 24 supports and eight elastic tiedowns (Left Side)
- D. Wall mounted tool rack with 24 supports and eight elastic tiedowns (Right Side)
- E. Second interior ladder rack
- F. 110/220 Vac "dry room" heater
- G. 2 vertical cabinets with 4 shelves each, installed in front of trailer.
- H. Rhino Lining protective flooring.
- I. One additional support stud kit (10 per box) for side or center tool racks
Catalog Number T4002528 (not shown)



Optional Equipment CHECKLIST

Exterior and Towing OPTIONS

- J. 12 Vdc Power Tongue Jack (3000lbs)
- K. Rear Skid Plate
- L. Rear Mounted Bumper 6"
- M. Rear Mounted Step Bumper 10 " (not shown)
- N. 2 5/16" Ball Type Hitch (not shown)
- O. Rear Ramp Door (not available with rear bumper)
- P. 10,000-lb. GVWR [two 5,000-lb. axles] (not shown)
- Q. 12,000-lb. GVWR [two 6,000-lb. axles] (not shown)
- R. 14,000-lb. GVWR [two 7,000-lb. axles] (not shown)
- S. Flipped axles add 4 extra inches of ground clearance.

In addition to the Standard features and equipment, Walk-In Trailers can be custom ordered with the Options listed below.

Please check the boxes on these two pages to select Options or just get in touch with us to help.



Order Sheet

Exterior and Towing- Standard Equipment

White exterior finish. Corrosion-resistant aluminum 0.30" gauge
Tandem Torflex Axles feature a "Rubber Ride" independent suspension and EZ-Lube Hubs.
Breakaway braking systems with electric breaks
Dual Rear Doors - One Curbside door
Tongue mounted spare tire
Adjustable height pintle eye hitch(19" to 27")
Fold up hand crank tongue jack with sand pad
Reflectors and LED exterior lights
Two Safety Chains
7-way 12v trailer end connector
DOT compliant
Standard 7,000 GVWR [two 3,500-lb. Axles]

Interior and Storage Provisions- Standard Equipment

White interior vinyl walls
Treated plywood flooring
Full length storage bins 14" deep on sides and 20" deep across from Overhead rack and thumbscrews for 30 universal tools(left side) Two full-height center racks
Ladder channel on floor between racks
150 plastic-coated support studs and 29 elastic tiedowns

Please select size and optional equipment below

- 16 ft. body length 7ft. wide 20 ft. body length 7ft. wide
- 16 ft. body length 7ft. 9in. wide 20 ft. body length 7ft. 9in. wide
- A. Second overhead rack and thumbscrews for 30 universal Tools (Right side)
- B. 12Vdc interior lights with two wall switches, select only one option:
 1 pair of lights 2 pairs of lights 3 pairs of lights 4 pairs of lights
- C. Wall mounted tool rack with 24 supports and eight elastic tiedowns (Left Side)
- D. Wall mounted tool rack with 24 supports and eight elastic tiedowns (Right Side)
- E. Second interior ladder rack
- F. 110/220 Vac "dry room" heater
- G. 2 vertical cabinets with 4 shelves each, installed in front of trailer.
- H. Rhino Lining protective flooring.
- I. One additional support stud kit (10 per box) for side or center tool racks Catalog Number T4002528 (3000lbs)
- J. 12 Vdc Power Tongue Jack (3000lbs)
- K. Rear Skid Plate
- L. Rear Mounted Bumper 6"
- M. Rear Mounted Step Bumper 10"
- N. 2 5/16" Ball Type Hitch
- O. Rear Ramp Door (not available with rear bumper)
- P. 10,000-lb. GVWR [two 5,000-lb. axles]
- Q. 12,000-lb. GVWR [two 6,000-lb. axles]
- R. 14,000-lb. GVWR [two 7,000-lb. axles]
- S. Flipped axles add 4 extra inches of ground clearance.

About Hubbell Power Systems

Hubbell Power Systems (HPS) manufactures a wide variety of transmission, distribution, substation, OEM and telecommunications products used by utilities. HPS products are also used in the civil construction, transportation, gas and water industries. Our product line includes construction and switching products, tools, insulators, arresters, pole line hardware, cable accessories, test equipment, transformer bushings and polymer precast enclosures and equipment pads.

Hubbell has a policy of continuous product improvement. We reserve the right to change design and specifications without notice.

©Copyright 2014 Hubbell Incorporated
Printed in U.S.A. 05/12A&J3M

Bulletin BR_09_108E

www.hubbellpowersystems.com

