

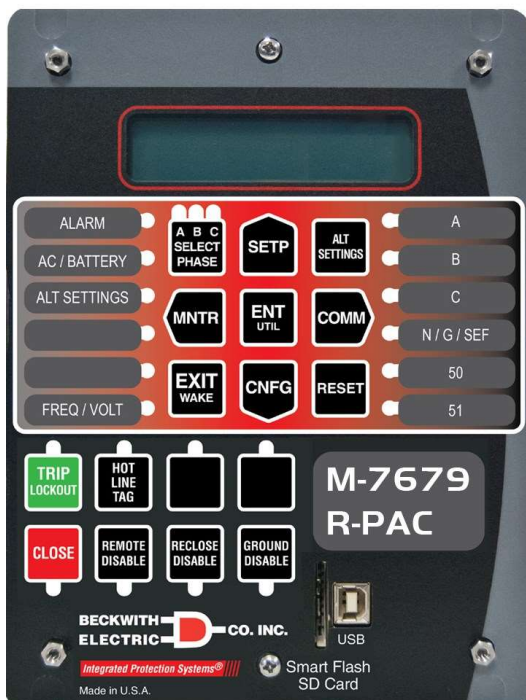
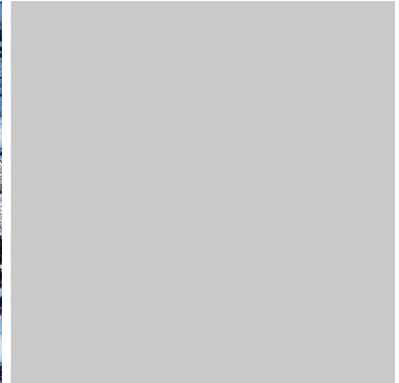
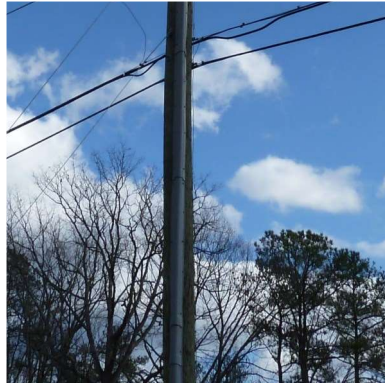
M-7679 R-PAC

Quick Reference Guide

Protection, Automation and Control System for
Recloser, Switch, Sectionalizer and Advanced
Distribution Automation Applications



BECKWITH
ELECTRIC  CO. INC.



Complete Control & Cabinet Replacement Solutions
Page 2

Retrofit Solutions for Existing Cabinets
Page 5






Original Equipment Manufacturers (OEMs)
Page 9

Control & Cabinet Replacement

The M-2979 Control Cabinet houses the M-7679 R-PAC and components for complete replacement of Three-Phase or Independent-Phase Switch, Sectionalizer, or Recloser Controls.

The M-2979 and M-7679 combination includes all the required interface connections and external communication capabilities that are necessary to replace an existing recloser control cabinet. For complete recloser replacement and is compatible with the following popular recloser brands.



Manufacturer	Model	Control Cable
ABB	GridShield® (250 Vdc) Recloser	24 Pin
	OVR3/VR-3S Recloser	24 Pin
	GridShield® (155 Vdc) Recloser	 32, 42 Pin
ABB (Thomas & Betts)	Elastimold MVR Recloser	 32 Pin
Eaton Cooper	NOVA™ 15, 27, 38 Recloser	19 Pin
	NOVA™ TS, STS Recloser	26 Pin
	Traditional Recloser:	
	VSA12, VSA12B, VSA16, VSA20, VSA20A	14 Pin
	VWE, VWE27, VWE38X, WE, WV27, WVE38X	14 Pin
	W, VW, WV, VWV	14 Pin
G&W	Viper-S® Recloser	14, 19 Pin
	Viper-ST® Recloser	 32, 42 Pin
	Viper-LT® Recloser	 32, 42 Pin
	Diamondback Load Break Switch	37 Pin
Siemens	SDR Recloser (when equipped with B-1862 42 to 40 Pin Siemens Adapter)	40 Pin
Tavrida	OSM AI_2 Recloser	42 Pin
	OSM AI_4 Recloser	 42 Pin
Yaskawa	Yaskawa Load Break Switch	



Multi-Recloser Interface Compatible



Three-Phase Ganged Reclosers



Independent-Phase Capable Reclosers

Complete Replacement Solutions



ABB
GridShield (250 Vdc)
Recloser
24 Pin



ABB
OVR3/VR-3S
Recloser
24 Pin



ABB
GridShield (155 Vdc)
Recloser
32, 42 Pin



**ABB
(Thomas & Betts)**
Elastimold MVR
Recloser
32 Pin



Eaton Cooper
NOVA 15, 27, 38
Recloser
19 Pin



Eaton Cooper
NOVA TS, STS
Recloser
26 Pin



Eaton Cooper
VSA12, VSA12B, VSA16,
VSA20, VSA20A
Recloser
14 Pin



Eaton Cooper
VWE, VWE27, VWE38X,
WE, WV27, WVE38X
Recloser
14 Pin



Eaton Cooper
W, VW, WV, VWV
Recloser
14 Pin



Complete Replacement Solutions



G&W
Viper-S
Recloser
14, 19 Pin

3P



G&W
Viper-ST
Recloser
32, 42 Pin

3P

IP

M



G&W
Viper-LT
Recloser
32, 42 Pin

3P

IP

M



G&W
Diamondback
Load Break Switch
37 Pin



Siemens
SDR
(with B-1862 42 to 40 Pin
Siemens Adapter)
Recloser
40 Pin

3P

IP



Tavrida
OSM AL_2
Recloser
42 Pin

3P



Tavrida
OSM AL_4
Recloser
42 Pin

3P

IP

M



Yaskawa
Load Break Switch

M-7679 R-PAC Retrofit Solutions

Beckwith Electric offers Adapter Frames, Adapter Kits or Adapter Chassis to replace select controls with the M-7679 R-PAC in existing cabinets.

- Adapter Chassis**

The Adapter Chassis provides compatible connector sockets that match the pin out of the existing control. Simply unplug control power, input, output and communications connectors and plug into the same locations on the Adapter Chassis allowing for an upgrade to be done in minutes.

- Adapter Kit**

An adapter kit includes an adapter frame and a specially designed wire harness that facilitates the mounting of the M-7679 into an existing enclosure.

- Adapter Frame**

A Beckwith Electric Frame allows for mounting of the M-7679 R-PAC in an existing cutout. The frame includes holes that duplicate the mounting studs used to mount the old control.

Locate your existing relay brand and model number to find the Beckwith Electric adapter chassis or adapter frame you will need for replacement.



Manufacturer	Model	Adapter Chassis	Adapter Kit	Adapter Frame
ABB	RER620 (GridShield)		M-2415	
Arteche	smART p500			B-1666
Eaton Cooper	Form 6 (14/19 Pin Only)	M-2406		
SEL	SEL-351P-3/Panacea	M-2411		B-1608
	SEL-351R-2	M-2410		B-1608

Retrofit Solutions



ABB
RER620 (GridShield)



Beckwith Adapter Kit
M-2415



Arteche
smART p500



Beckwith Adapter Frame
B-1666



Eaton Cooper
Form 6
 (14/19 Pin Only)



Beckwith Adapter Chassis
M-2406

The M-2406 provides easy direct mechanical replacement of the Eaton Cooper Form 6 recloser control in the existing cabinet.

It eliminates the need of expensive rewiring of I/O signals by interfacing with the existing electronics.



Retrofit Solutions



SEL
SEL-351P-3/Panacea



Beckwith Adapter Chassis
M-2411
Beckwith Adapter Frame
B-1608



SEL
SEL-351R-2



Beckwith Adapter Chassis
M-2410
Beckwith Adapter Frame
B-1608

Original Equipment Manufacturers (OEMs)

Manufacturer	Model
Hawker Siddeley (Whipp & Bourne)	GVR Recloser (24 Pin)
Inertia Engineering	PinLineBOSS™ Sidebreak Switch (MSO)
S&C Electric Company	Scada-Mate® SD Switching Systems
Southern States	Smart Sectionalizer TranSwitcher®



**Hawker Siddeley
(Whipp & Bourne)**

GVR
Recloser
24 Pin



Inertia Engineering

PinLineBOSS™
Sidebreak Switch
(MSO)



**S&C Electric
Company**

Scada-Mate® SD
Switching Systems



Southern States

Smart Sectionalizer



Southern States

TranSwitcher®



Are you ready for a quote for a Complete Control & Cabinet Replacement Solution?

To help find the best solution for you, please review and answer the following questions.

Question 1: **What is your current Manufacturer and Model?** Please Specify: _____

Question 2: **Does your switching device have voltage transducers?**

- ☐ Yes (Continue with Question 2.)
- ☐ No (Skip to Question 4.)

Question 3: **What type of voltage transducers are being used with your switching device? (Select One)**

- ☐ 3 X Standard PT (120 Vac Nominal) H4
- ☐ 4 X IVS Sensors (4 Vac Nominal, 12 Vac Max) L4
- ☐ 3 X IVS Sensors (4 Vac Nominal, 12 Vac Max) X4
- ☐ 6 X Standard PT (120 Vac Nominal) H6
- ☐ 6 X IVS Sensors (4 Vac Nominal, 12 Vac Max) L6
- ☐ 3 X Standard PT (120 Vac Nominal) + 3 X IVS Sensors (4 Vac Nominal, 12 Vac Max) X6

Question 4: **How are these voltages being brought into the control cabinet? (Select One)**

- ☐ Through the interface control cable.
- ☐ Through a dedicated voltage sensing cable wired directly into the cabinet.
- ☐ Terminated with an amphenol connector:
 - ☐ 4 Pin
 - ☐ 8 Pin
 - ☐ Other, Please Specify: _____

Question 5: **How is the control cabinet being powered? (Select One)**

- ☐ Direct wired from 1 source.
- ☐ Direct wired from 2 sources.
- ☐ 1 X 2 Pin Socket
- ☐ 1 X 3 Pin Socket
- ☐ 2 X 2 Pin Socket
- ☐ 2 X 3 Pin Socket

Question 6: **What application is being used for your switching device? (Select One)**

- ☐ As a recloser (79) only.
- ☐ As a sectionalizer (load break switch) only.
- ☐ In advanced DA applications like FLISR, Loop Schemes, Multi-mode (79/switch/sectionalizer).

Question 7: **Which mode is used if your switching device is Independent Phase capable? (Select One)**

- ☐ Three Phase Ganged Mode
- ☐ Independent Phase Mode (3T3LO, 1T1LO, 1T3LO)

Question 8: **The M-7679 R-PAC comes standard with (1) USB, (1) SD Port, and (1) RS-232.**

For additional serial ports, select one:

- ☐ RS-232 (Add a Second)
- ☐ RS-485
- ☐ Serial Fiber

Do you need Ethernet Ports, RJ-47 or Fiber? (Select One)

- ☐ (1) RJ-45
- ☐ (1) Fiber
- ☐ (1) RJ-45 & (1) Fiber
- ☐ (2) RJ-45
- ☐ (2) Fiber

Question 9: **The M-7679 R-PAC comes standard with DNP and MODBUS. Select your additional protocol needs:**

- ☐ IEC 61850
- ☐ IEC 60870-5-101/104

After completing this form, please email to ProtectionSales@BeckwithElectric.com,
or visit www.beckwithelectric.com/r-pac-quote to complete this form online. **Thank you!**



**Products defined by you,
refined by Beckwith.**



**6190 118th Avenue North
Largo, FL 33773-3724 U.S.A.**



BeckwithElectric.com



Facebook.com/BeckwithElectric



Twitter.com/BeckwithCompany



YouTube.com/BeckwithElectric