

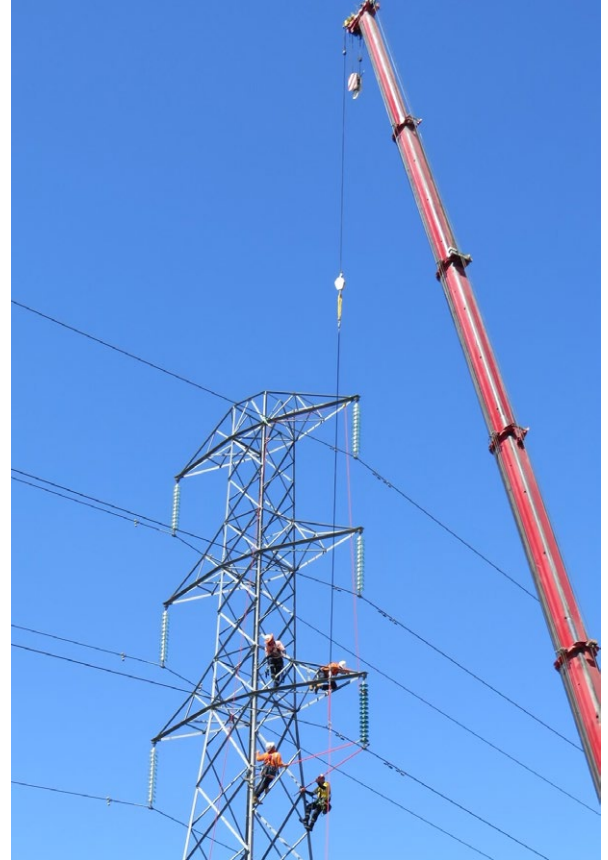


Insulating Rope Link

Designed to be an insulating link between a crane's hook block and energized system components.

Features

- Includes one open and one closed spelter socket termination
- Custom models with 2 open or 2 closed spelter sockets can be made to order
- Similar dielectric properties as CHANCE Epoxiglas™ hotsticks
- Easy to clean and electrically test
- Custom bag included for storage
- Safety Factor: 5:1



| Part Number | Description | Length | Diameter | WLL |
|-----------------------|-----------------------------|---------------|-----------------|-----------------------|
| PSCDEWNK19X010 | D.E.W. Line Rope Link | 10 ft (3.0 m) | 7/8 in (22 mm) | 7,000 lb. (3,175 kg) |
| PSCDEWNK38X010 | D.E.W. Line Heavy Rope Link | 10 ft (3.0 m) | 1.25 in (32 mm) | 15,000 lb. (6,803 kg) |

Custom lengths can be made to order

