



Rethink Rope.

New Barry D.E.W. Line® Insulating Rope Tools
from CHANCE® Lineman Grade Tools™

www.HPSDelivers.com/DEW





Warning: Hazard of Common Rope in Hot Line Work

Common rope products are often used in Electrical Utility work, but in Live-Line Maintenance common rope can be a hazard.

While a brand-new rope with no previous use may have some dielectric properties, moisture, dust, dirt, and other contaminants start compromising the rope as soon as it begins use in the field.

This would be less concerning if the rope could be thoroughly inspected, cleaned, and tested between uses, but that is not possible on open bundles of fibers woven together.

Internal damage and contaminants are easily hidden from inspection, cleaning cannot get deep between fibers, and moisture is very difficult to thoroughly remove.

These factors can cause flashovers resulting in a catastrophic failure of the rope, as well as electrical tracking, giving the system voltage a deadly path to ground.

This is why most rope manufacturers insist their products are not insulating. Barry D.E.W. Line® Insulating Rope Tools provide answers for ALL these issues.

COMMON ROPE ISSUES

- Traps moisture, dust, and contaminants
- Difficult to INSPECT
- Can't be CLEANED
- Difficult to TEST
- Easily compromised by flashover HEAT
- Not INSULATING

It's time to **Rethink Rope.**

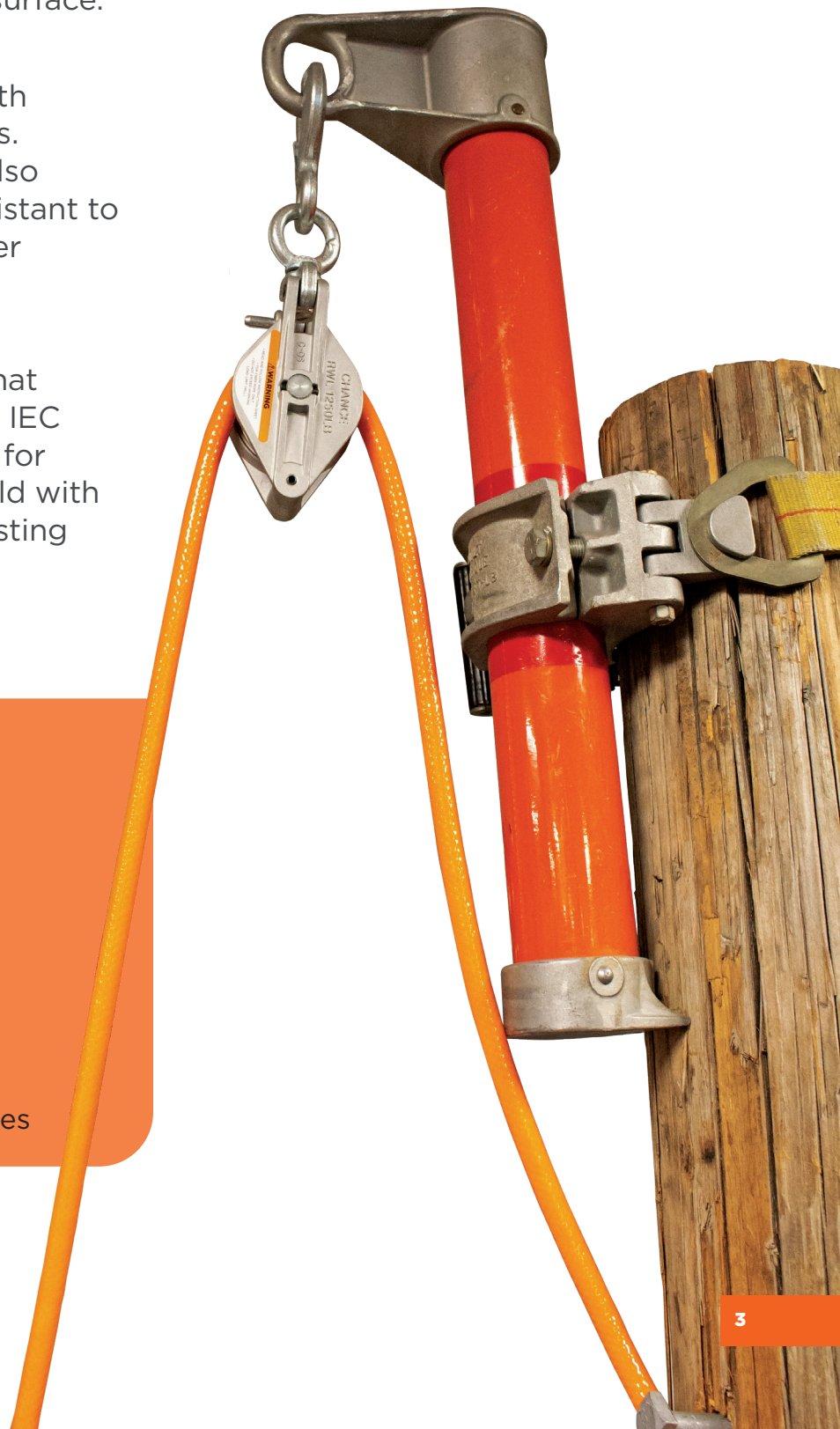
Because all Barry D.E.W. Line® products are fixed-length tools with full-length jackets and sealed terminations, moisture cannot penetrate the tools and can be wiped dry from the surface.

Dirt and contaminants are easily detectable and cleaned away with standard Hotstick cleaning wipes. All Barry D.E.W. Line® tools are also Category 4 Arc-Flash Rated, resistant to 40 calories per square centimeter (cal/cm²),* providing excellent resistance to flashover heat.

And with insulating properties that meet or exceed ASTM F1701 and IEC 62192, these tools can be tested for dielectric effectiveness in the field with the same equipment used for testing CHANCE Hotsticks.

BARRY D.E.W. LINE® INSULATING ROPE TOOLS

- SEALED: moisture, dust, and contaminants cannot penetrate
- Easy to INSPECT
- Easily wiped CLEAN and DRY
- Can Test like a Hotstick
- Resistant to flashover HEAT
- Exceptional INSULATING Properties





Insulating Rope Tools and Nets

Features and Benefits

- All Barry D.E.W. Line® (Dielectric Even Wet) products meet or exceed the dry and wet electrical requirements of IEC 62192:2009 and ASTM F1701-12
- Arc-Flash Rated Resistant to 40 cal/cm² (category 4)
- Fully sealed and hydrophobic
- Cleanable! Barry D.E.W. Line® products can be wiped down quickly and easily before use
- Durable and flexible coating reduces abrasions or cuts
- High strength. Low elongation. Lightweight.
- Excellent resistance to UV
- Individually labeled with date and serial #

The Barry D.E.W. Line® Product Line



RESCUE KIT



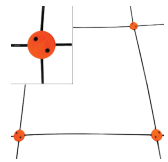
RESCUE ROPE



WORK ROPE



TAG LINE



SAFETY NET

Featured Products

INSULATING RESCUE KITS

Designed as a complete, self-contained, ready to use kit that can be deployed at a moment's notice should an emergency evacuation situation arise. Can be rigged in three different rescue configurations:

- Self-Rescue with controlled descent
- Lowering a victim from above
- Lowering a victim from below



PART NUMBER	DESCRIPTION	ROPE LENGTH†
PSCDEWR2050	D.E.W. LINE R2 RESCUE KIT	50 ft (15.2 m)
PSCDEWR2150	D.E.W. LINE R2 RESCUE KIT	150 ft (45.7 m)

† Made to order in other lengths by request.

INSULATING RESCUE ROPE

Featured in the Rescue Kits; also available separately. Great for evacuating workers out of energized environments. Works well in sheaves, pulleys, descenders, and rope grab devices. Also great for general lifting, pulling, rigging, and stringing.

- Same Rope tool featured in the Rescue Kits
- Similar dielectric properties as CHANCE Epoxiglas™ Hotsticks
- High-Angle Rescue Rope
- Sealed sewn termination with plastic thimble at each end
- Knottable*



(Included in rescue kit but available to order separately)

Outer Diameter: 15/32in (12 mm)

Core Diameter: 7/16in (11 mm)

Working Load Limit*: 500 lb. (226 kg)

Rescue Ropes are made to order. Contact CSR/TM/BU for pricing and availability

* Reduce working load limit by 50% when using knots.

INSULATING WORK ROPE

Multi-purpose load handling tool with stainless steel thimbles and an easily cleaned, hydrophobic surface. Available in two diameters for different working load limits. Perfect for lifting, rigging, pulling, stringing, and as a dielectric link.



- Similar dielectric properties as CHANCE Epoxiglas™ Hotsticks
- Sealed sewn termination with stainless steel thimble at each end
- An easily cleaned, hydrophobic surface
- Knottable*

PART NUMBER	DESCRIPTION	LENGTH†	DIAMETER	WLL*
PSCDEWNP28050	D.E.W. LINE WORK LINE	50 ft (15.2 m)	1/2 in (13 mm)	1,260 lb. (571 kg)
PSCDEWNP28100	D.E.W. LINE WORK LINE	100 ft (30.4 m)	1/2 in (13 mm)	1,260 lb. (571 kg)
PSCDEWNP28150	D.E.W. LINE WORK LINE	150 ft (45.7 m)	1/2 in (13 mm)	1,260 lb. (571 kg)
PSCDEWNP45100	D.E.W. LINE HEAVY WORK LINE	100 ft (30.4 m)	9/16 in (14 mm)	2,000 lb. (907 kg)
PSCDEWNP45150	D.E.W. LINE HEAVY WORK LINE	150 ft (45.7 m)	9/16 in (14 mm)	2,000 lb. (907 kg)

† Made to order in other lengths by request.

* Reduce working load limit by 50% when using knots.

INSULATING TAG LINE

Compact and lightweight fixed-length rope tool with stainless steel thimbles, sealed terminations, and an easily cleaned, hydrophobic surface. It's great for hand lines, tagging out conductors, general purpose lifting and pulling, use as a trigger rope, stabilizing loads, and as a dielectric link.



- Similar dielectric properties as CHANCE Epoxiglas™ Hotsticks
- Sealed sewn termination with stainless steel thimble at each end
- Lightweight

PART NUMBER	DESCRIPTION	LENGTH†	DIAMETER	WLL
PSCDEWNK10020	D.E.W. LINE TAG LINE	20 ft (6.0 m)	1/4 in (6 mm)	200 lb. (90.7 kg)
PSCDEWNK10030	D.E.W. LINE TAG LINE	30 ft (9.1 m)	1/4 in (6 mm)	200 lb. (90.7 kg)
PSCDEWNK10040	D.E.W. LINE TAG LINE	40 ft (12.1 m)	1/4 in (6 mm)	200 lb. (90.7 kg)

† Made to order in other lengths by request.



STAND UP TRANSPORT BAG

Highly recommended accessory for Rescue Ropes, Work Ropes, and Heavy Work Ropes longer than 50 ft in length. Padded walls keep bag open even when empty. Designed for rope tools to be laid in figure 8 pattern which greatly improves ease of handling by reducing memory retained when coiled. Can hold up to 800 ft long Work Ropes and Rescue Ropes, and up to 700 ft long Heavy Work Ropes.

PSCDEWBZ150LU



Dimensions: 56 x 18 x 12 in (1420 x 450 x 300 mm)



INSULATING ROPE LINK

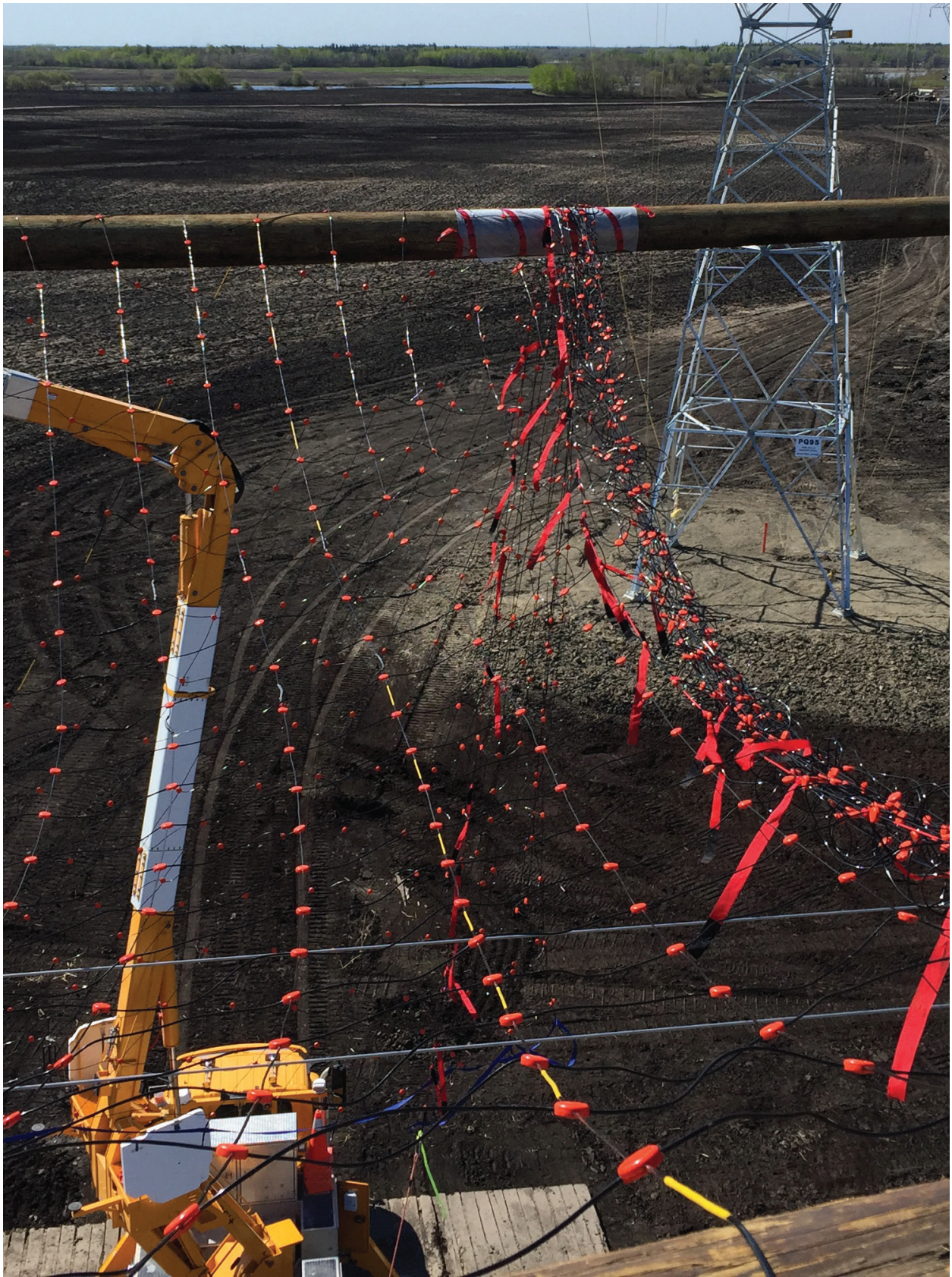
Load handling tool for much heavier work. Available in two diameters for different working load limits.

- Spelter Socket termination at each end, choose two open, two closed, or one of each as pictured above
- Similar dielectric properties as CHANCE Epoxiglas™ Hotsticks
- Easily cleaned and tested hydrophobic surface

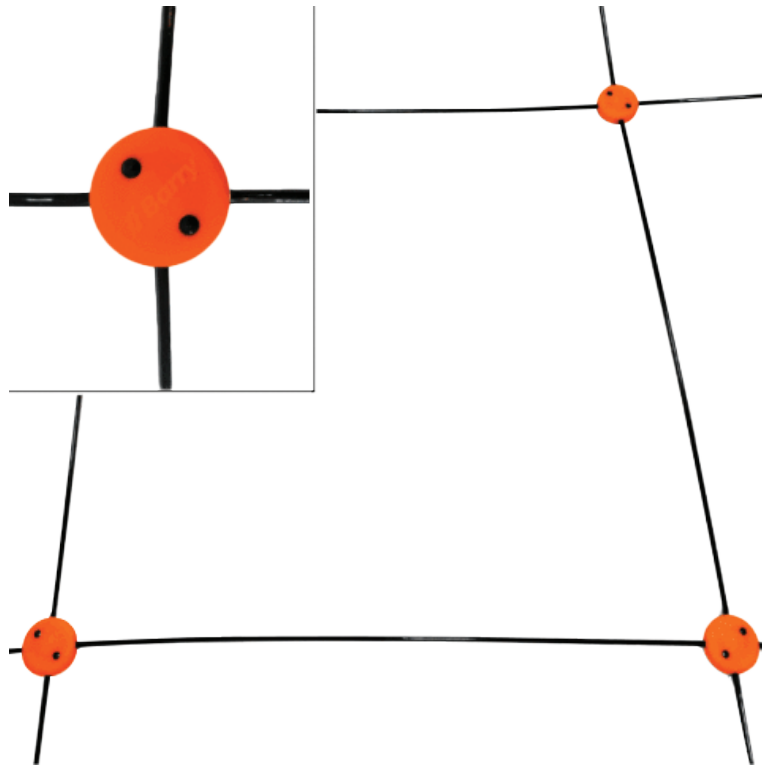
PART NUMBER	DESCRIPTION	LENGTH	DIAMETER	WLL
PSCDEWnk19X010	D.E.W. LINE ROPE LINK	10 ft (3.0 m)	7/8 in (22 mm)	7,000 lb. (3,175 kg)
PSCDEWnk38X010	D.E.W. LINE HEAVY ROPE LINK	10 ft (3.0 m)	1.25 in (32 mm)	15,000 lb. (6,803 kg)

Rope Links are made to order. Contact CSR/TM/BU for pricing and availability





INSULATING SAFETY NET



The BEST way to provide protection against an energized conductor falling into roads, transmission lines, distribution lines, substations, or other energized components.

- Lightweight, dielectric safety net
- Acts as safety barrier or guard structure
- Can be mounted on various structures
- Often used high over roads and distribution lines while transmission work is performed above

Diameter: ¼ in (6 mm)

Mesh Size: 2.5 ft x 2.5 ft (0.75 m x 0.75m)

Standard Lengths: 100 ft (30 m), 150 ft (45 m), 200 ft (61 m)

Width: 70 ft (21 m)

All Nets are made to order. Contact CSR/TM/BU for pricing and availability



For more information visit
www.HPSDelivers.com/DEW



hubbelpowersystems.com

©2022 Hubbell Inc. All rights reserved.
Hubbell, the Hubbell logo are registered trademarks or trademarks of Hubbell Inc.
Barry D.E.W. Line® is a trademark of Barry Cordage Ltd.
All other trademarks are the property of their respective owners.
Printed in U.S.A. CENT_LTE_BR_EN_00105