



Gas Connectors & Accessories

Continental
Industries

EFV FITTING CATALOG



www.hubbell.com



Our Company

Continental Industries, headquartered in Tulsa , Oklahoma , was formed in 1958 and is today a leading manufacturer of connectors for the Gas Utility, Gas & Water Distribution, Propane, Plumbing and Cathodic Protection markets.

An ISO 9001 certified company, Continental Industries has manufacturing locations in Tulsa and Broken Arrow , Oklahoma. Our employees are committed to providing the best value to our customers.

Our full line of plastic and steel connector products are produced utilizing state-of-the-art injection molding machines, automatic screw machines, and CNC machining equipment. Our commitment to quality is evident in every step of our business processes. Renowned for our design and development of technologically advanced products, we provide our customers with reliable, cost-effective solutions to their “main to meter” service line installation, repair, or renewal problems.

thermOweld® , our exothermic welding materials and accessories products, provide a simple, efficient, cost effective method of permanently connecting two or more conductors utilizing a high temperature exothermic reaction between Aluminum and Copper Oxide to produce an almost pure copper weld. We manufacture all of our weld metal and molds in Oklahoma so you are certain of getting consistent, high quality products to satisfy your exothermic welding needs.

Our Vision

Simply stated, our vision is “To be a Sales and Customer Driven Company” . Our commitment to providing the best value to our customers is shared by the entire organization and is evidenced by both the number of long standing relationships we have gratefully developed over the years and the new relationships we are developing every day.

Why Use

Continental Industries is the industry leader in the manufacturing of plastic and steel mechanical fittings for the Gas & Water industry. From the Con-Stab ID Seal® to Scope®, steel saddles to HVT, quality and service is what drives us at Continental Industries.

Manufacturing fittings since 1958, Continental has the experience and confidence necessary to provide the best quality products on the market today. Continental Industries’ mechanical fittings will save you both time and money and give you the peace of mind that comes with using a quality product.

Continental Industries’ uses only the highest quality raw materials, engineered designs and manufacturing processes to ensure the consistent quality that makes Continental Industries’ products second to none.

With regional sales offices located throughout the United States, a Continental Industries representative is only a phone call away to help with any questions you may have.

Come experience what so many other satisfied customers have experienced, the excitement and family atmosphere that is Continental Industries!

Fittings With EFV's

Continental has included EFV's (Excess Flow Valves) into our fittings. For your convenience we offer Gasbreaker™ EFVs. These EFVs meet or exceed D.O.T. 192.381, MSS SP-115 and ASTM F1802 standards. The EFVs offered are bypass models. The bypass models automatically reset when the service line downstream is made gas tight and the pressure is equalized across the valve.



GasBreaker™ EFV Info..... 4-7



Con-Stab ID Seal® Full Couplings
w/ GasBreaker™ EFV's..... 8



Con-Stab ID Seal® Adapter Couplings
w/ GasBreaker™ EFV's..... 9



Con-Stab ID Seal® Fusion Saddle Tees
w/ GasBreaker™ EFV's..... 10-12



Con-Stab ID Seal® Eliminators
w/ GasBreaker™ EFV's..... 13-15



Eliminators
w/ GasBreaker™ EFV's..... 16-18



Compression Full Couplings
w/ GasBreaker™ EFV's..... 19



Polyethylene Pigtails
w/ GasBreaker™ EFV's..... 19



Identification Rings.....20



Protective Sleeves21

The Gasbreaker™ EFVs listed in this material are manufactured to their own specifications. Upon request these specifications may be furnished. Proper evaluation of the data for the chosen EFV should be made prior to selection and use of the EFV. The Gasbreaker™ EFVs are not designed to actuate at pressures less than 5 psig. Therefore it is advised not to use these EFV's in any application where the pressure is below 5 psig.



Since their introduction, millions of GasBreaker™ EFVs have been sold (more than 5 times as many valves as all other US competitors combined) and installed worldwide, providing tens of billions of field service hours. Today the GasBreaker™ Excess Flow Valve is known as “The EFV of Choice.” The GasBreaker™ EFV is manufactured in a wide variety of models that can accommodate service line capacities for both residential and commercial applications. The company’s highly trained technical and production staff is experienced in all areas of EFV research, development, engineering and quality control.

All GasBreaker™ EFVs Feature: Simplicity of Design

- Work with the flow of natural gas as the sensing source
- Activate when a line rupture causes an excess flow condition
- Automatically reset and resume normal operation after repairs are made using a slight gas bypass to repressurize the line
- Non-bypass models are also available. These models are reopened by correcting the excess flow condition and manually applying back pressure to the line and valve.
- Install in minutes with standard tools
- Operate within your normal service line sizing requirements to avoid tripping by snap-acting loads
- Higher capacity EFVs can accommodate future increases in gas loads.
- Maintain stability under turbulent flow conditions by using a unique, dynamically balanced float
- Available for virtually all pressures and service line capabilities
- In-line installation makes them tamper-proof
- Can be fabricated with fitting and piping materials from most manufacturers

Durable/Maintenance-Free construction

- Made of plastic materials proven in use on natural gas systems
- Require no lubrication and are compatible with all types of pipe materials and configurations – plastic-to-plastic, steel-to-plastic, and steel-to-steel
- Constructed of maintenance-free materials that surpass stringent gas utility requirements



GasBreaker™ Excess Flow® Valves (EFVs)

The World’s
Leading
Automatic
Safety
Valves
for Gas
Service
Lines



Cutaway of Series 700 EFV



Why EFVs?

EFVs are similar to electrical circuit breakers that trip when electrical current exceeds design limits. They automatically trip when gas flow to a private residence or commercial facility exceeds design limits. This would be the case if a gas service line were to rupture because of ground movement, natural disasters or third party damage.

100% Tested & Quality Assured

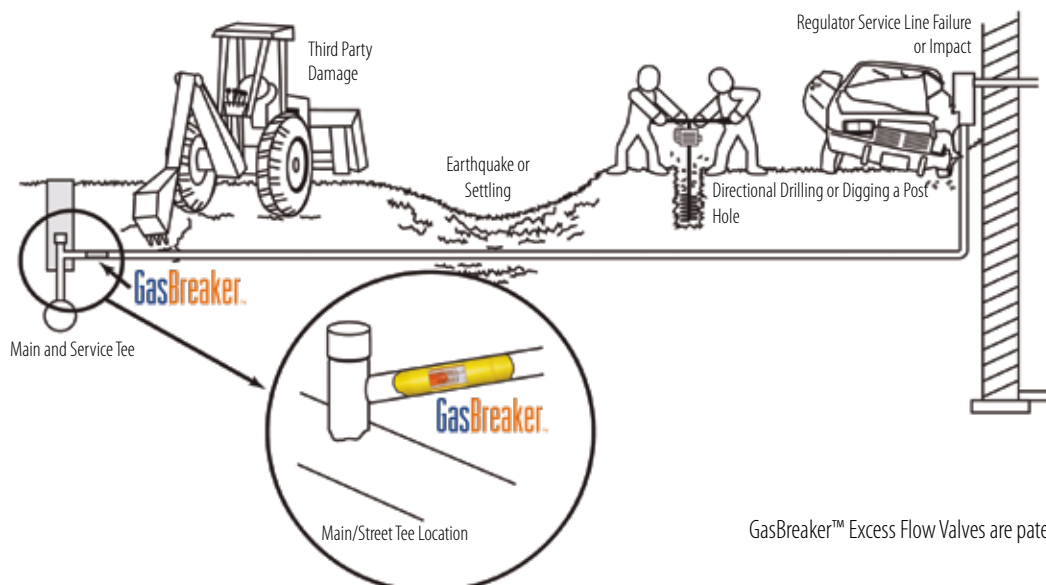
- GasBreaker™ EFVs are 100% factory tested in accordance with DOT 192.381
- Each valve is individually packaged with operating instructions and field identification tags
- Each valve capsule is lot coded with date and model number traceable back to all component parts
- EFV Models are Series identified by color-coded labels with directional arrows that meet the ASTM F2897 Tracking & Traceability Bar Coding Standard
- Valves have passed rigid pre-acceptance testing by major utilities
- Meet or exceed DOT 192.381, MSS SP-115; MSS SP-142; ASTM F1802 and ASTM F2138 requirements

Benefits of EFVs:

- Turn emergency situations into standard leak service calls
- Save time and money by reducing the number of emergency situations
- Safeguard utilities against unwarranted negative publicity and excessive liabilities that result from gas leak emergencies
- Increase public confidence in gas
- Provide safe working conditions for gas utility personnel and first responders at the scene of a service line rupture
- EPA Natural Gas Star Program recommends the installation of EFVs to reduce methane emissions

Available Configurations

- GasBreaker™ EFVs are available prefabricated to your specifications in plastic, steel or in a wide range of tees, couplings and mechanical fittings
- GasBreaker™ No-Hole System “21”® EFVs are designed for installation on existing service lines without digging-up the line. A No-Hole EFV can be installed up to 150 feet upstream from the meter set, under live (pressurized) gas conditions in systems with normal operating pressures up to 150 psig. Sizes 1/2” CTS to 1” IPS; also available in 25 mm & 32 mm – contact GasBreaker™ for availability
- GasBreaker™ Auto Cock™ Excess Flow Valves (EFVs) are designed for installation under live gas conditions at pressures up to 150 psig, in existing steel gas utility service lines or risers immediately upstream of the meter set. Sizes 3/4”, 1”, 1 1/4” IPS – contact GasBreaker™ for availability.



GasBreaker™ Excess Flow Valves are patented.



EFV ASSEMBLY GUIDE

The following pipe sizes can be utilized with the indicated EFV series listed

Plastic pipe available in PE 2406/2708, PE 3408/4710/PE 100							
S/A= Sticks and Assemblies				A= Assemblies Only			
EFV Series	1/2" CTS		3/4" CTS	1" CTS			1 1/4" CTS
	062 wall	090 wall	090 wall	090 wall	099 wall	101 wall	SDR 15.3
300	A	A	A	S/A	S/A	S/A	S/A
350	S/A	S/A	S/A	-	-	-	-
400	A	A	A	S/A	S/A	S/A	S/A
550	S/A	S/A	S/A	-	-	-	-
700	A	A	A	S/A	S/A	S/A	S/A
800	S/A	S/A	A	-	-	-	-
1100	A	A	A	S/A	S/A	S/A	S/A
1800	-	-	A	S/A	S/A	S/A	S/A
2600	-	-	-	S/A	S/A	S/A	A
5500	-	-	-	-	-	-	A

Plastic pipe available in PE 2406/2708, PE 3408/4710/PE 100								
S/A= Sticks and Assemblies				A= Assemblies Only				
EFV Series	1/2" IPS	3/4" IPS		1" IPS		1 1/4" IPS	1 1/2" IPS	2" IPS
	SDR 9.3	SDR 11.0	SDR 9.0	SDR 11.0	SDR 9.33	SDR 10.0	SDR 9.33	SDR 11.00
300	A	S/A	S/A	S/A	S/A	S/A	S/A	S/A
350	S/A	-	-	-	-	-	-	-
400	A	S/A	S/A	S/A	S/A	S/A	S/A	S/A
550	S/A	-	-	-	-	-	-	-
700	A	S/A	S/A	S/A	S/A	S/A	S/A	S/A
800	A	-	-	-	-	-	-	-
1100	A	S/A	S/A	S/A	S/A	S/A	S/A	S/A
1800	-	S/A	S/A	S/A	S/A	S/A	S/A	S/A
2600	-	S/A	S/A	S/A	S/A	A	A	A
5500	-	A	A	A	A	S/A	S/A	S/A
10000	-	-	-	-	-	-	-	S



GasBreaker™ EFV All Plastic Models

Sizes 1/2" CTS to 2" IPS

Models shown are a sampling of available units

PLASTIC STICKS



Model 41 Universal Stick – All Applications



Model 32 – Butt Fusion and Mechanical Applications only

PLASTIC ASSEMBLIES

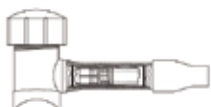
Socket Fusion Applications



Model 58 – Model 32 with coupling on outlet



Model 33 – Model 32 with coupling on inlet & outlet



Model 44 – Tee with valve inserted & coupling on outlet



Model 46 – Tee with Model 32 attached & coupling on outlet with pigtail

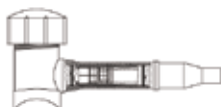
Butt Fusion Applications



Model 42 – Model 32 with coupling on outlet



Model 62 – Tee with Model 32 on outlet



Model 39 – Tee with valve inserted & coupling on outlet

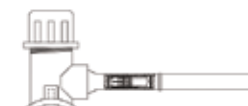
Electrofusion Applications



Model 81 Model 82
Valve machined for insertion into electrofusion tee or pipe



Model 70 – Tee with Model 41 attached



Model 71 – Tee with valve inserted & pigtail

Mechanical Applications



Model 35 – Model 32 with mechanical fitting



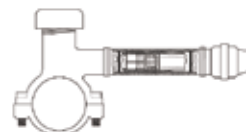
Model 75 Model 76
Valve in stiffener for Continental & Metfit couplings



Model 40 – Tee with valve inserted & mechanical outlet



Model 31 – Tee with Model 35 attached



Model 65 – Mechanical tee with Model 35 attached



CON-STAB ID SEAL®

Full Couplings with GasBreaker™ Excess Flow Valves



GasBreaker™ EXCESS FLOW VALVES					
EFV SIZE	PE SIZE	WALL	PART NUMBER (3408/4710)	PART NUMBER (2406/2708)	
GasBreaker™ SERIES 300	1/2" CTS (5/8" OD)	.090	3259-52-1004-70	3369-52-1004-70	
	3/4" CTS (7/8" OD)	.090	3259-52-1006-70	3369-52-1006-70	
	1" CTS (1 1/8" OD)		.099/.101	3259-52-1008-70	3369-52-1008-70
			.090	3259-52-1008-71	3369-52-1008-71
	1 1/4" CTS (1 3/8" OD)	.090	3259-52-1039-71	3369-52-1039-71	
	1/2" IPS	SDR-9.33 (.090)	3259-52-1012-70	3369-52-1012-70	
	3/4" IPS	SDR-11 (.095)	3259-52-1013-70	3369-52-1013-70	
1" IPS	SDR-11 (.119)	3259-52-1014-70	3369-52-1014-70		
GasBreaker™ SERIES 700	1/2" CTS (5/8" OD)	.090	3259-52-1004-72	3369-52-1004-72	
	3/4" CTS (7/8" OD)	.090	3259-52-1006-72	3369-52-1006-72	
	1" CTS (1 1/8" OD)		.099/.101	3259-52-1008-72	3369-52-1008-72
			.090	3259-52-1008-73	3369-52-1008-73
	1 1/4" CTS (1 3/8" OD)	.090	3259-52-1039-73	3369-52-1039-73	
	1/2" IPS	SDR-9.33 (.090)	3259-52-1012-72	3369-52-1012-72	
	3/4" IPS	SDR-11 (.095)	3259-52-1013-72	3369-52-1013-72	
1" IPS	SDR-11 (.119)	3259-52-1014-72	3369-52-1014-72		
GasBreaker™ SERIES 1800	1" CTS (1 1/8" OD)		.099/.101	3259-52-1008-74	3369-52-1008-74
			.090	3259-52-1008-75	3369-52-1008-75
	1 1/4" CTS (1 3/8" OD)	.090	3259-52-1039-75	3369-52-1039-75	
	1/2" IPS	SDR-9.33 (.090)	3259-52-1012-74	3369-52-1012-74	
	3/4" IPS	SDR-11 (.095)	3259-52-1013-74	3369-52-1013-74	
1" IPS	SDR-11 (.119)	3259-52-1014-74	3369-52-1014-74		

For PE sizes and/or EFV series not listed, contact Continental Industries.

Pressure rating—Designed to meet or exceed pressure rating of PE pipe per 49 CFR Part 192 and ASTM D2513.

Recommended accessories; Continental's Bladed Chamfering Tool.





FITTINGS W/ GasBreaker™ EFV'S

CON-STAB ID SEAL®

Adapter Couplings with GasBreaker™ Excess Flow Valves (PE Stab x PE Pigtail)



GasBreaker™ EXCESS FLOW VALVES				
EFV SIZE	PE SIZE	WALL	PART NUMBER (3408/4710)	PART NUMBER (2406/2708)
GasBreaker™ SERIES 300	1/2" CTS (5/8" OD)	.090	0459-48-3104-70	0469-48-3104-70
	1" CTS (1 1/8" OD)	.099/.101	0859-48-3108-70	0869-48-3108-70
	1/2" IPS	SDR-9.33 (.090)	1259-48-3112-70	1269-48-3112-70
	3/4" IPS	SDR-11 (.095)	1359-48-3113-70	1369-48-3113-70
	1" IPS	SDR-11 (.119)	1459-48-3114-70	1469-48-3114-70
GasBreaker™ SERIES 700	1/2" CTS (5/8" OD)	.090	0459-48-3104-72	0469-48-3104-72
	1" CTS (1 1/8" OD)	.099/.101	0859-48-3108-72	0869-48-3108-72
	1/2" IPS	SDR-9.33 (.090)	1259-48-3112-72	1269-48-3112-72
	3/4" IPS	SDR-11 (.095)	1359-48-3113-72	1369-48-3113-72
	1" IPS	SDR-11 (.119)	1459-48-3114-72	1469-48-3114-72
GasBreaker™ SERIES 1800	1" CTS (1 1/8" OD)	.099/.101	0859-48-3108-74	0869-48-3108-74
	1/2" IPS	SDR-9.33 (.090)	1259-48-3112-74	1269-48-3112-74
	3/4" IPS	SDR-11 (.095)	1359-48-3113-74	1369-48-3113-74
	1" IPS	SDR-11 (.119)	1459-48-3114-74	1469-48-3114-74

For PE sizes and/or EFV series not listed, contact Continental Industries.

Pressure rating—Designed to meet or exceed pressure rating of PE pipe per 49 CFR Part 192 and ASTM D2513.

Recommended accessories: Continental's Bladed Chamfering Tool.





CON-STAB ID SEAL®

Fusion Saddle Tees with GasBreaker™ Series 300 Excess Flow Valves



GasBreaker™ 300 SERIES EXCESS FLOW VALVES						
EFV SIZE	OUTLET (PE SIZE)	WALL	Main Size	PUNCH SIZE	PART NUMBER (3408/4710) (RECTANGULAR BASE)	PART NUMBER (2406/2708) (RECTANGULAR BASE)
GasBreaker™ SERIES 300	1/2" CTS (5/8" OD)	.090	1 1/4"	.800"	3259-15-4204-70	3369-15-4204-70
			2"	.800"	3259-17-4104-70	3369-17-4204-70
			3"	.800"	3259-19-4104-70	3369-19-4204-70
			4"	.800"	3259-21-4104-70	3369-21-4204-70
			6"	.800"	3259-24-4104-70	3369-24-4204-70
			8"	.800"	3259-26-4104-70	3369-26-4204-70
	3/4" CTS (7/8" OD)	.090	1 1/4"	.800"	3259-15-4106-70	3369-15-4206-70
			2"	.800"	3259-17-4106-70	3369-17-4206-70
			3"	.800"	3259-19-4106-70	3369-19-4206-70
			4"	.800"	3259-21-4106-70	3369-21-4206-70
			6"	.800"	3259-24-4106-70	3369-24-4206-70
			8"	.800"	3259-26-4106-70	3369-26-4206-70
	1" CTS (1 1/8" OD)	.099/.101	1 1/4"	.800"	3259-15-4108-70	3369-15-4208-70
			2"	.800"	3259-17-4108-70	3369-17-4208-70
			3"	.800"	3259-19-4108-70	3369-19-4208-70
			4"	.800"	3259-21-4108-70	3369-21-4208-70
			6"	.800"	3259-24-4108-70	3369-24-4208-70
			8"	.800"	3259-26-4108-70	3369-26-4208-70
		.090	1 1/4"	.800"	3259-15-4108-71	3369-15-4208-71
			2"	.800"	3259-17-4108-71	3369-17-4208-71
			3"	.800"	3259-19-4108-71	3369-19-4208-71
			4"	.800"	3259-21-4108-71	3369-21-4208-71
			6"	.800"	3259-24-4108-71	3369-24-4208-71
			8"	.800"	3259-26-4108-71	3369-26-4208-71
	1/2" IPS	SDR-9.33 (.090)	1 1/4"	.800"	3259-15-4112-70	3369-15-4212-70
			2"	.800"	3259-17-4112-70	3369-17-4212-70
			3"	.800"	3259-19-4112-70	3369-19-4212-70
			4"	.800"	3259-21-4112-70	3369-21-4212-70
			6"	.800"	3259-24-4112-70	3369-24-4212-70
			8"	.800"	3259-26-4112-70	3369-26-4212-70
3/4" IPS	SDR-11 (.095)	1 1/4"	.800"	3259-15-4113-70	3369-15-4213-70	
		2"	.800"	3259-17-4113-70	3369-17-4213-70	
		3"	.800"	3259-19-4113-70	3369-19-4213-70	
		4"	.800"	3259-21-4113-70	3369-21-4213-70	
		6"	.800"	3259-24-4113-70	3369-24-4213-70	
		8"	.800"	3259-26-4113-70	3369-26-4213-70	
1" IPS	SDR-11 (.119)	1 1/4"	.800"	3259-15-4114-70	3369-15-4214-70	
		2"	.800"	3259-17-4114-70	3369-17-4214-70	
		3"	.800"	3259-19-4114-70	3369-19-4214-70	
		4"	.800"	3259-21-4114-70	3369-21-4214-70	
		6"	.800"	3259-24-4114-70	3369-24-4214-70	
		8"	.800"	3259-26-4114-70	3369-26-4214-70	

For PE sizes and/or EFV series not listed, contact Continental Industries.

Pressure rating—Designed to meet or exceed pressure rating of PE pipe per 49 CFR Part 192 and ASTM D2513.

Recommended accessories; Continental's Bladed Chamfering Tool.

For Protective Sleeves, see page 21.



FITTINGS W/ GasBreaker™ EFV'S

CON-STAB ID SEAL®

Fusion Saddle Tees with GasBreaker™ Series 700 Excess Flow Valves



GasBreaker™ 700 SERIES EXCESS FLOW VALVES						
EFV SIZE	OUTLET (PE SIZE)	WALL	Main Size	PUNCH SIZE	PART NUMBER (3408/4710) (RECTANGULAR BASE)	PART NUMBER (2406/2708) (RECTANGULAR BASE)
GasBreaker™ SERIES 700	1/2" CTS (5/8" OD)	.090	1 1/4"	.800"	3259-15-4104-72	3369-15-4204-72
			2"	.800"	3259-17-4104-72	3369-17-4204-72
			3"	.800"	3259-19-4104-72	3369-19-4204-72
			4"	.800"	3259-21-4104-72	3369-21-4204-72
			6"	.800"	3259-24-4104-72	3369-24-4204-72
			8"	.800"	3259-26-4104-72	3369-26-4204-72
	3/4" CTS (7/8" OD)	.090	1 1/4"	.800"	3259-15-4106-72	3369-15-4206-72
			2"	.800"	3259-17-4106-72	3369-17-4206-72
			3"	.800"	3259-19-4106-72	3369-19-4206-72
			4"	.800"	3259-21-4106-72	3369-21-4206-72
			6"	.800"	3259-24-4106-72	3369-24-4206-72
			8"	.800"	3259-26-4106-72	3369-26-4206-72
	1" CTS (1 1/8" OD)	.099/.101	1 1/4"	.800"	3259-15-4108-72	3369-15-4208-72
			2"	.800"	3259-17-4108-72	3369-17-4208-72
			3"	.800"	3259-19-4108-72	3369-19-4208-72
			4"	.800"	3259-21-4108-72	3369-21-4208-72
			6"	.800"	3259-24-4108-72	3369-24-4208-72
			8"	.800"	3259-26-4108-72	3369-26-4208-72
		.090	1 1/4"	.800"	3259-15-4108-73	3369-15-4208-73
			2"	.800"	3259-17-4108-73	3369-17-4208-73
			3"	.800"	3259-19-4108-73	3369-19-4208-73
			4"	.800"	3259-21-4108-73	3369-21-4208-73
			6"	.800"	3259-24-4108-73	3369-24-4208-73
			8"	.800"	3259-26-4108-73	3369-26-4208-73
	1/2" IPS	SDR-9.33 (.090)	1 1/4"	.800"	3259-15-4112-72	3369-15-4212-72
			2"	.800"	3259-17-4112-72	3369-17-4212-72
			3"	.800"	3259-19-4112-72	3369-19-4212-72
			4"	.800"	3259-21-4112-72	3369-21-4212-72
			6"	.800"	3259-24-4112-72	3369-24-4212-72
			8"	.800"	3259-26-4112-72	3369-26-4212-72
	3/4" IPS	SDR-11 (.095)	1 1/4"	.800"	3259-15-4113-72	3369-15-4213-72
			2"	.800"	3259-17-4113-72	3369-17-4213-72
			3"	.800"	3259-19-4113-72	3369-19-4213-72
			4"	.800"	3259-21-4113-72	3369-21-4213-72
			6"	.800"	3259-24-4113-72	3369-24-4213-72
			8"	.800"	3259-26-4113-72	3369-26-4213-72
1" IPS	SDR-11 (.119)	1 1/4"	.800"	3259-15-4114-72	3369-15-4214-72	
		2"	.800"	3259-17-4114-72	3369-17-4214-72	
		3"	.800"	3259-19-4114-72	3369-19-4214-72	
		4"	.800"	3259-21-4114-72	3369-21-4214-72	
		6"	.800"	3259-24-4114-72	3369-24-4214-72	
		8"	.800"	3259-26-4114-72	3369-26-4214-72	

For PE sizes and/or EFV series not listed, contact Continental Industries.

Pressure rating—Designed to meet or exceed pressure rating of PE pipe per 49 CFR Part 192 and ASTM D2513.

Recommended accessories; Continental's Bladed Chamfering Tool.

For Protective Sleeves, see page 21.



CON-STAB ID SEAL® Fusion Saddle Tees with GasBreaker™ Series 1800 Excess Flow Valves

GasBreaker™ 1800 SERIES EXCESS FLOW VALVES						
EFV SIZE	OUTLET (PE SIZE)	WALL	Main Size	PUNCH SIZE	PART NUMBER (3408/4710) (RECTANGULAR BASE)	PART NUMBER (2406/2708) (RECTANGULAR BASE)
GasBreaker™ SERIES 1800	1" CTS (1 1/8" OD)	.099/.101	1 1/4"	.800"	3259-15-4108-74	3369-15-4208-74
			2"	.800"	3259-17-4108-74	3369-17-4208-74
			3"	.800"	3259-19-4108-74	3369-19-4208-74
			4"	.800"	3259-21-4108-74	3369-21-4208-74
			6"	.800"	3259-24-4108-74	3369-24-4208-74
			8"	.800"	3259-26-4108-74	3369-26-4208-74
		.090	1 1/4"	.800"	3259-15-4108-75	3369-15-4208-75
			2"	.800"	3259-17-4108-75	3369-17-4208-75
			3"	.800"	3259-19-4108-75	3369-19-4208-75
			4"	.800"	3259-21-4108-75	3369-21-4208-75
			6"	.800"	3259-24-4108-75	3369-24-4208-75
			8"	.800"	3259-26-4108-75	3369-26-4208-75
	1/2" IPS	SDR-9.33 (.090)	1 1/4"	.800"	3259-15-4112-74	3369-15-4212-74
			2"	.800"	3259-17-4112-74	3369-17-4212-74
			3"	.800"	3259-19-4112-74	3369-19-4212-74
			4"	.800"	3259-21-4112-74	3369-21-4212-74
			6"	.800"	3259-24-4112-74	3369-24-4212-74
			8"	.800"	3259-26-4112-74	3369-26-4212-74
	3/4" IPS	SDR-11 (.095)	1 1/4"	.800"	3259-15-4113-74	3369-15-4213-74
			2"	.800"	3259-17-4113-74	3369-17-4213-74
			3"	.800"	3259-19-4113-74	3369-19-4213-74
			4"	.800"	3259-21-4113-74	3369-21-4213-74
			6"	.800"	3259-24-4113-74	3369-24-4213-74
			8"	.800"	3259-26-4113-74	3369-26-4213-74
1" IPS	SDR-11 (.119)	1 1/4"	.800"	3259-15-4114-74	3369-15-4214-74	
		2"	.800"	3259-17-4114-74	3369-17-4214-74	
		3"	.800"	3259-19-4114-74	3369-19-4214-74	
		4"	.800"	3259-21-4114-74	3369-21-4214-74	
		6"	.800"	3259-24-4114-74	3369-24-4214-74	
		8"	.800"	3259-26-4114-74	3369-26-4214-74	



For PE sizes and/or EFV series not listed, contact Continental Industries.
 Pressure rating: Designed to meet or exceed pressure rating of PE pipe per 49 CFR Part 192 & ASTM D2513.
 Recommended accessories; Continental's Bladed Chamfering Tool.
 For Protective Sleeves, see page 21.



FITTINGS W/ GasBreaker™ EFV'S

CON-STAB ID SEAL® ELIMINATORS with GasBreaker™ Series 300 Excess Flow Valves

GasBreaker™ 300 SERIES EXCESS FLOW VALVES					
EFV SIZE	OUTLET (PE SIZE)	WALL	MAIN SIZE	PART NUMBER 5864 1/2" CR PUNCH	PART NUMBER 5764 13/16" CR PUNCH
GasBreaker™ SERIES 300	1/2" CTS (5/8" OD)	.090	1"	5864-14-1604-70	N/A
			1 1/4"	5864-15-1604-70	N/A
			1 1/2"	5864-16-1604-70	5764-16-1604-70
			2"	5864-17-1604-70	5764-17-1604-70
			3"	5864-19-1604-70	5764-19-1604-70
			4"	5864-21-1604-70	5764-21-1604-70
			6"	5864-24-1604-70	5764-24-1604-70
			8"	N/A	5764-26-1604-70
	1" CTS (1 1/8" OD)	.099/.101	1"	5864-14-1608-70	N/A
			1 1/4"	5864-15-1608-70	N/A
			1 1/2"	5864-16-1608-70	5764-16-1608-70
			2"	5864-17-1608-70	5764-17-1608-70
			3"	5864-19-1608-70	5764-19-1608-70
			4"	5864-21-1608-70	5764-21-1608-70
			6"	5864-24-1608-70	5764-24-1608-70
			8"	N/A	5764-26-1608-70
		.090	1"	5864-14-1608-71	N/A
			1 1/4"	5864-15-1608-71	N/A
			1 1/2"	5864-16-1608-71	5764-16-1608-71
			2"	5864-17-1608-71	5764-17-1608-71
			3"	5864-19-1608-71	5764-19-1608-71
			4"	5864-21-1608-71	5764-21-1608-71
			6"	5864-24-1608-71	5764-24-1608-71
			8"	N/A	5764-26-1608-71
	1/2" IPS	SDR-9.33 (.090)	1"	5864-14-1612-70	N/A
			1 1/4"	5864-15-1612-70	N/A
			1 1/2"	5864-16-1612-70	5764-16-1612-70
			2"	5864-17-1612-70	5764-17-1612-70
			3"	5864-19-1612-70	5764-19-1612-70
			4"	5864-21-1612-70	5764-21-1612-70
			6"	5864-24-1612-70	5764-24-1612-70
			8"	N/A	5764-26-1612-70
	3/4" IPS	SDR-11 (.095)	1"	5864-14-1613-70	N/A
			1 1/4"	5864-15-1613-70	N/A
			1 1/2"	5864-16-1613-70	5764-16-1613-70
			2"	5864-17-1613-70	5764-17-1613-70
			3"	5864-19-1613-70	5764-19-1613-70
			4"	5864-21-1613-70	5764-21-1613-70
			6"	5864-24-1613-70	5764-24-1613-70
			8"	N/A	5764-26-1613-70
	1" IPS	SDR-11 (.119)	1"	5864-14-1614-70	N/A
			1 1/4"	5864-15-1614-70	N/A
			1 1/2"	5864-16-1614-70	5764-16-1614-70
			2"	5864-17-1614-70	5764-17-1614-70
			3"	5864-19-1614-70	5764-19-1614-70
			4"	5864-21-1614-70	5764-21-1614-70
			6"	5864-24-1614-70	5764-24-1614-70
			8"	N/A	5764-26-1614-70



33-5505-00 & 33-5505-01 ~
Combination Tapping Tool & Saddle
Bolt "T" Wrench



33-5508-00 ~ Test Plug Cap for
Eliminator Saddles with 1/4" FPT
for attachment of quick connect
coupling

For PE sizes and/or EFV series not listed, contact Continental Industries.
Pressure rating: 100psig MAOP

Recommended accessories; Continental's Bladed Chamfering Tool, 33-5505-00 ~ Combination Tapping Tool & Saddle Bolt "T" Wrench for 1" thru 6" IPS Eliminators, 33-5505-01 ~ Combination Tapping Tool & Saddle Bolt "T" Wrench for 3" thru 8" IPS Eliminators, 33-5508-00 ~ Test Plug Cap for Eliminator Saddles
For Protective Sleeves, see page 21.



CON-STAB ID SEAL® ELIMINATORS with GasBreaker™ Series 700 Excess Flow Valves

GasBreaker™ 700 SERIES EXCESS FLOW VALVES					
EFV SIZE	OUTLET (PE SIZE)	WALL	MAIN SIZE	PART NUMBER 5864 1/2" CR PUNCH	PART NUMBER 5764 13/16" CR PUNCH
GasBreaker™ SERIES 700	1/2" CTS (5/8" OD)	.090	1"	5864-14-1604-72	N/A
			1 1/4"	5864-15-1604-72	N/A
			1 1/2"	5864-16-1604-72	5764-16-1604-72
			2"	5864-17-1604-72	5764-17-1604-72
			3"	5864-19-1604-72	5764-19-1604-72
			4"	5864-21-1604-72	5764-21-1604-72
			6"	5864-24-1604-72	5764-24-1604-72
			8"	N/A	5764-26-1604-72
	1" CTS (1 1/8" OD)	.099/.101	1"	5864-14-1608-72	N/A
			1 1/4"	5864-15-1608-72	N/A
			1 1/2"	5864-16-1608-72	5764-16-1608-72
			2"	5864-17-1608-72	5764-17-1608-72
		.090	3"	5864-19-1608-72	5764-19-1608-72
			4"	5864-21-1608-72	5764-21-1608-72
			6"	5864-24-1608-72	5764-24-1608-72
			8"	N/A	5764-26-1608-72
	1/2" IPS	SDR-9.33 (.090)	1"	5864-14-1608-73	N/A
			1 1/4"	5864-15-1608-73	N/A
			1 1/2"	5864-16-1608-73	5764-16-1608-73
			2"	5864-17-1608-73	5764-17-1608-73
			3"	5864-19-1608-73	5764-19-1608-73
			4"	5864-21-1608-73	5764-21-1608-73
			6"	5864-24-1608-73	5764-24-1608-73
			8"	N/A	5764-26-1608-73
	3/4" IPS	SDR-11 (.095)	1"	5864-14-1612-72	N/A
			1 1/4"	5864-15-1612-72	N/A
			1 1/2"	5864-16-1612-72	5764-16-1612-72
			2"	5864-17-1612-72	5764-17-1612-72
			3"	5864-19-1612-72	5764-19-1612-72
			4"	5864-21-1612-72	5764-21-1612-72
			6"	5864-24-1612-72	5764-24-1612-72
			8"	N/A	5764-26-1612-72
	1" IPS	SDR-11 (.119)	1"	5864-14-1613-72	N/A
			1 1/4"	5864-15-1613-72	N/A
			1 1/2"	5864-16-1613-73	5764-16-1613-73
			2"	5864-17-1613-72	5764-17-1613-72
3"			5864-19-1613-72	5764-19-1613-72	
4"			5864-21-1613-72	5764-21-1613-72	
6"			5864-24-1613-72	5764-24-1613-72	
8"			N/A	5764-26-1613-72	



33-5505-00 & 33-5505-01 ~
Combination Tapping Tool & Saddle
Bolt "T" Wrench



33-5508-00 ~ Test Plug Cap for
Eliminator Saddles with 1/4" FPT for
attachment of quick connect coupling

For PE sizes and/or EFV series not listed, contact Continental Industries.

Pressure rating: 100psig MAOP

Recommended accessories; Continental's Bladed Chamfering Tool, 33-5505-00 ~ Combination Tapping Tool & Saddle Bolt "T" Wrench for 1" thru 6" IPS Eliminators, 33-5505-01 ~ Combination Tapping Tool & Saddle Bolt "T" Wrench for 3" thru 8" IPS Eliminators, 33-5508-00 ~ Test Plug Cap for Eliminator Saddles

For Protective Sleeves, see page 21.



FITTINGS W/ GasBreaker™ EFV'S

CON-STAB ID SEAL® ELIMINATORS with GasBreaker™ Series 1800 Excess Flow Valves

GasBreaker™ 1800 SERIES EXCESS FLOW VALVES					
EFV SIZE	OUTLET (PE SIZE)	WALL	MAIN SIZE	PART NUMBER 5864 1/2" CR PUNCH	PART NUMBER 5764 13/16" CR PUNCH
GasBreaker™ SERIES 1800	1" CTS (1 1/8" OD)	.099/.101	1"	5864-14-1608-74	N/A
			1 1/4"	5864-15-1608-74	N/A
			1 1/2"	5864-16-1608-74	5764-16-1608-74
			2"	5864-17-1608-74	5764-17-1608-74
			3"	5864-19-1608-74	5764-19-1608-74
			4"	5864-21-1608-74	5764-21-1608-74
			6"	5864-24-1608-74	5764-24-1608-74
			8"	N/A	5764-26-1608-74
		.090	1"	5864-14-1608-75	N/A
			1 1/4"	5864-15-1608-75	N/A
			1 1/2"	5864-16-1608-75	5764-16-1608-72
			2"	5864-17-1608-75	5764-17-1608-75
			3"	5864-19-1608-75	5764-19-1608-75
			4"	5864-21-1608-75	5764-21-1608-75
			6"	5864-24-1608-75	5764-24-1608-75
			8"	N/A	5764-26-1608-75
	1/2" IPS	SDR-9.33 (.090)	1"	5864-14-1612-74	N/A
			1 1/4"	5864-15-1612-74	N/A
			1 1/2"	5864-16-1612-74	5764-16-1612-74
			2"	5864-17-1612-74	5764-17-1612-74
			3"	5864-19-1612-74	5764-19-1612-74
			4"	5864-21-1612-74	5764-21-1612-74
			6"	5864-24-1612-74	5764-24-1612-74
			8"	N/A	5764-26-1612-74
	3/4" IPS	SDR-11 (.095)	1"	5864-14-1613-74	N/A
			1 1/4"	5864-15-1613-74	N/A
			1 1/2"	5864-16-1613-74	5764-16-1613-74
			2"	5864-17-1613-74	5764-17-1613-74
			3"	5864-19-1613-74	5764-19-1613-74
			4"	5864-21-1613-74	5764-21-1613-74
			6"	5864-24-1613-74	5764-24-1613-74
			8"	N/A	5764-26-1613-74
1" IPS	SDR-11 (.119)	1"	5864-14-1614-74	N/A	
		1 1/4"	5864-15-1614-74	N/A	
		1 1/2"	5864-16-1614-74	5764-16-1614-74	
		2"	5864-17-1614-74	5764-17-1614-74	
		3"	5864-19-1614-74	5764-19-1614-74	
		4"	5864-21-1614-74	5764-21-1614-74	
		6"	5864-24-1614-74	5764-24-1614-74	
		8"	N/A	5764-26-1614-74	



33-5505-00 & 33-5505-01~
Combination Tapping Tool & Saddle
Bolt "T" Wrench



33-5508-00 ~ Test Plug Cap for
Eliminator Saddles with 1/4" FPT for
attachment of quick connect coupling



For PE sizes and/or EFV series not listed, contact Continental Industries.

Pressure rating: 100psig MAOP

Recommended accessories; Continental's Bladed Chamfering Tool, 33-5505-00 ~ Combination Tapping Tool & Saddle Bolt "T" Wrench for 1" thru 6" IPS Eliminators, 33-5505-01 ~ Combination Tapping Tool & Saddle Bolt "T" Wrench for 3" thru 8" IPS Eliminators, 33-5508-00 ~ Test Plug Cap for Eliminator Saddles

For Protective Sleeves, see page 21.



ELIMINATORS with GasBreaker™ Series 300 Excess Flow Valves

GasBreaker™ 300 SERIES EXCESS FLOW VALVES					
EFV SIZE	OUTLET (PE SIZE)	WALL	MAIN SIZE	PART NUMBER 5864 1/2" CR PUNCH	PART NUMBER 5764 13/16" CR PUNCH
GasBreaker™ SERIES 300	1/2" CTS (5/8" OD)	.090	1"	5864-14-1004-70	N/A
			1 1/4"	5864-15-1004-70	N/A
			1 1/2"	5864-16-1004-70	5764-16-1004-70
			2"	5864-17-1004-70	5764-17-1004-70
			3"	5864-19-1004-70	5764-19-1004-70
			4"	5864-21-1004-70	5764-21-1004-70
			6"	5864-24-1004-70	5764-24-1004-70
			8"	N/A	5764-26-1004-70
		.062	1"	5864-14-1004-71	N/A
			1 1/4"	5864-15-1004-71	N/A
			1 1/2"	5864-16-1004-71	5764-16-1004-71
			2"	5864-17-1004-71	5764-17-1004-71
			3"	5864-19-1004-71	5764-19-1004-71
			4"	5864-21-1004-71	5764-21-1004-71
			6"	5864-24-1004-71	5764-24-1004-71
			8"	N/A	5764-26-1004-71
	1" CTS (1 1/8" OD)	.099/.101	1"	5864-14-1008-70	N/A
			1 1/4"	5864-15-1008-70	N/A
			1 1/2"	5864-16-1008-70	5764-16-1008-70
			2"	5864-17-1008-70	5764-17-1008-70
			3"	5864-19-1008-70	5764-19-1008-70
			4"	5864-21-1008-70	5764-21-1008-70
			6"	5864-24-1008-70	5764-24-1008-70
			8"	N/A	5764-26-1008-70
		.090	1"	5864-14-1008-71	N/A
			1 1/4"	5864-15-1008-71	N/A
			1 1/2"	5864-16-1008-71	5764-16-1008-71
			2"	5864-17-1008-71	5764-17-1008-71
			3"	5864-19-1008-71	5764-19-1008-71
			4"	5864-21-1008-71	5764-21-1008-71
			6"	5864-24-1008-71	5764-24-1008-71
			8"	N/A	5764-26-1008-71
	3/4" IPS	SDR-11 (.095)	1"	5864-14-1013-70	N/A
			1 1/4"	5864-15-1013-70	N/A
			1 1/2"	5864-16-1013-70	5764-16-1013-70
			2"	5864-17-1013-70	5764-17-1013-70
			3"	5864-19-1013-70	5764-19-1013-70
			4"	5864-21-1013-70	5764-21-1013-70
			6"	5864-24-1013-70	5764-24-1013-70
			8"	N/A	5764-26-1013-70
1" IPS	SDR-11 (.119)	1"	5864-14-1014-70	N/A	
		1 1/4"	5864-15-1014-70	N/A	
		1 1/2"	5864-16-1014-70	5764-16-1014-70	
		2"	5864-17-1014-70	5764-17-1014-70	
		3"	5864-19-1014-70	5764-19-1014-70	
		4"	5864-21-1014-70	5764-21-1014-70	
		6"	5864-24-1014-70	5764-24-1014-70	
		8"	N/A	5764-26-1014-70	



33-5505-00 & 33-5505-01~ Combination Tapping Tool & Saddle Bolt "T" Wrench



33-5508-00 ~ Test Plug Cap for Eliminator Saddles with 1/4" FPT for attachment of quick connect coupling



For PE sizes and/or EFV series not listed, contact Continental Industries.

Pressure rating: 100psig MAOP

Recommended accessories; 33-5505-00 ~ Combination Tapping Tool & Saddle Bolt "T" Wrench for 1" thru 6" IPS Eliminators, 33-5505-01 ~ Combination Tapping Tool & Saddle Bolt "T" Wrench for 3" thru 8" IPS Eliminators, 33-5508-00 ~ Test Plug Cap for Eliminator Saddles

For Protective Sleeves, see page 21.



FITTINGS W/ GasBreaker™ EFV'S

ELIMINATORS

with GasBreaker™ Series 700 Excess Flow Valves

GasBreaker™ 700 SERIES EXCESS FLOW VALVES					
EFV SIZE	OUTLET (PE SIZE)	WALL	MAIN SIZE	PART NUMBER 5864 1/2" CR PUNCH	PART NUMBER 5764 13/16" CR PUNCH
GasBreaker™ SERIES 700	1/2" CTS (5/8" OD)	.090	1"	5864-14-1004-72	N/A
			1 1/4"	5864-15-1004-72	N/A
			1 1/2"	5864-16-1004-72	5764-16-1004-72
			2"	5864-17-1004-72	5764-17-1004-72
			3"	5864-19-1004-72	5764-19-1004-72
			4"	5864-21-1004-72	5764-21-1004-72
			6"	5864-24-1004-72	5764-24-1004-72
			8"	N/A	5764-26-1004-72
		.062	1"	5864-14-1004-73	N/A
			1 1/4"	5864-15-1004-73	N/A
			1 1/2"	5864-16-1004-73	5764-16-1004-73
			2"	5864-17-1004-73	5764-17-1004-73
			3"	5864-19-1004-73	5764-19-1004-73
			4"	5864-21-1004-73	5764-21-1004-73
			6"	5864-24-1004-73	5764-24-1004-73
			8"	N/A	5764-26-1004-73
	1" CTS (1 1/8" OD)	.099/.101	1"	5864-14-1008-72	N/A
			1 1/4"	5864-15-1008-72	N/A
			1 1/2"	5864-16-1008-72	5764-16-1008-72
			2"	5864-17-1008-72	5764-17-1008-72
			3"	5864-19-1008-72	5764-19-1008-72
			4"	5864-21-1008-72	5764-21-1008-72
			6"	5864-24-1008-72	5764-24-1008-72
			8"	N/A	5764-26-1008-72
		.090	1"	5864-14-1008-73	N/A
			1 1/4"	5864-15-1008-73	N/A
			1 1/2"	5864-16-1008-73	5764-16-1008-73
			2"	5864-17-1008-73	5764-17-1008-73
			3"	5864-19-1008-73	5764-19-1008-73
			4"	5864-21-1008-73	5764-21-1008-73
			6"	5864-24-1008-73	5764-24-1008-73
			8"	N/A	5764-26-1008-73
	3/4" IPS	SDR-11 (.095)	1"	5864-14-1013-72	N/A
			1 1/4"	5864-15-1013-72	N/A
			1 1/2"	5864-16-1013-72	5764-16-1013-72
			2"	5864-17-1013-72	5764-17-1013-72
3"			5864-19-1013-72	5764-19-1013-72	
4"			5864-21-1013-72	5764-21-1013-72	
6"			5864-24-1013-72	5764-24-1013-72	
8"			N/A	5764-26-1013-72	
1" IPS	SDR-11 (.119)	1"	5864-14-1014-72	N/A	
		1 1/4"	5864-15-1014-72	N/A	
		1 1/2"	5864-16-1014-72	5764-16-1014-72	
		2"	5864-17-1014-72	5764-17-1014-72	
		3"	5864-19-1014-72	5764-19-1014-72	
		4"	5864-21-1014-72	5764-21-1014-72	
		6"	5864-24-1014-72	5764-24-1014-72	
		8"	N/A	5764-26-1014-72	



33-5505-00 & 33-5505-01~
Combination Tapping Tool & Saddle
Bolt "T" Wrench



33-5508-00 ~ Test Plug Cap for
Eliminator Saddles with 1/4" FPT for
attachment of quick connect coupling



For PE sizes and/or EFV series not listed, contact Continental Industries.

Pressure rating: 100psig MAOP

Recommended accessories:, 33-5505-00 ~ Combination Tapping Tool & Saddle Bolt "T" Wrench for 1" thru 6" IPS Eliminators, 33-5505-01 ~ Combination Tapping Tool & Saddle Bolt "T" Wrench for 3" thru 8" IPS Eliminators, 33-5508-00 ~ Test Plug Cap for Eliminator Saddles

For Protective Sleeves, see page 21.



ELIMINATORS with GasBreaker™ Series 1800 Excess Flow Valves

GasBreaker™ 1800 SERIES EXCESS FLOW VALVES					
EFV SIZE	OUTLET (PE SIZE)	WALL	MAIN SIZE	PART NUMBER 5864 1/2" CR PUNCH	PART NUMBER 5764 13/16" CR PUNCH
GasBreaker™ SERIES 1800	1" CTS (1 1/8" OD)	.099/.101	1"	5864-14-1008-74	N/A
			1 1/4"	5864-15-1008-74	N/A
			1 1/2"	5864-16-1008-74	5764-16-1008-74
			2"	5864-17-1008-74	5764-17-1008-74
			3"	5864-19-1008-74	5764-19-1008-74
			4"	5864-21-1008-74	5764-21-1008-74
			6"	5864-24-1008-74	5764-24-1008-74
			8"	N/A	5764-26-1008-74
		.090	1"	5864-14-1008-75	N/A
			1 1/4"	5864-15-1008-75	N/A
			1 1/2"	5864-16-1008-75	5764-16-1008-75
			2"	5864-17-1008-75	5764-17-1008-75
			3"	5864-19-1008-75	5764-19-1008-75
			4"	5864-21-1008-75	5764-21-1008-75
			6"	5864-24-1008-75	5764-24-1008-75
			8"	N/A	5764-26-1008-75
	3/4" IPS	SDR-11 (.095)	1"	5864-14-1013-74	N/A
			1 1/4"	5864-15-1013-74	N/A
			1 1/2"	5864-16-1013-74	5764-16-1013-74
			2"	5864-17-1013-74	5764-17-1013-74
			3"	5864-19-1013-74	5764-19-1013-74
			4"	5864-21-1013-74	5764-21-1013-74
			6"	5864-24-1013-74	5764-24-1013-74
			8"	N/A	5764-26-1013-74
1" IPS	SDR-11 (.119)	1"	5864-14-1014-74	N/A	
		1 1/4"	5864-15-1014-74	N/A	
		1 1/2"	5864-16-1014-74	5764-16-1014-74	
		2"	5864-17-1014-74	5764-17-1014-74	
		3"	5864-19-1014-74	5764-19-1014-74	
		4"	5864-21-1014-74	5764-21-1014-74	
		6"	5864-24-1014-74	5764-24-1014-74	
		8"	N/A	5764-26-1014-74	



33-5505-00 & 33-5505-01 ~ Combination Tapping Tool & Saddle Bolt "T" Wrench



33-5508-00 ~ Test Plug Cap for Eliminator Saddles with 1/4" PT for attachment of quick connect coupling



For PE sizes and/or EFV series not listed, contact Continental Industries.

Pressure rating: 100psig MAOP

Recommended accessories; 33-5505-00 ~ Combination Tapping Tool & Saddle Bolt "T" Wrench for 1" thru 6" IPS Eliminators, 33-5505-01 ~ Combination Tapping Tool & Saddle Bolt "T" Wrench for 3" thru 8" IPS Eliminators, 33-5508-00 ~ Test Plug Cap for Eliminator Saddles

For Protective Sleeves, see page 21.



FITTINGS W/ GasBreaker™ EFV'S

COMPRESSION FITTINGS

Full Couplings with GasBreaker™ Excess Flow Valves

GasBreaker™ EXCESS FLOW VALVES			
EFV SIZE	PE SIZE	WALL	PART NUMBER
GasBreaker™ SERIES 300	1/2" CTS (5/8" OD)	.090	5657-52-1004-70
		.062	5657-52-1004-71
	1" CTS (1 1/8" OD)	.099/.101	5657-52-1008-70
		.090	5657-52-1008-71
	3/4" IPS	SDR-11 (.095)	5657-52-1013-70
1" IPS	SDR-11 (.119)	5657-52-1014-70	
GasBreaker™ SERIES 700	1/2" CTS (5/8" OD)	.090	5657-52-1004-72
		.062	5657-52-1004-73
	1" CTS (1 1/8" OD)	.099/.101	5657-52-1008-72
		.090	5657-52-1008-73
	3/4" IPS	SDR-11 (.095)	5657-52-1013-72
1" IPS	SDR-11 (.119)	5657-52-1014-72	
GasBreaker™ SERIES 1800	1" CTS (1 1/8" OD)	.099/.101	5657-52-1008-74
		.090	5657-52-1008-75
	3/4" IPS	SDR-11 (.095)	5657-52-1013-74
1" IPS	SDR-11 (.119)	5657-52-1014-74	

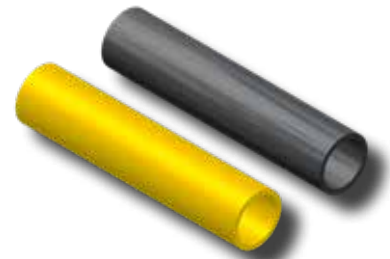


For PE sizes and/or EFV series not listed, contact Continental Industries.
 Pressure rating—Designed to meet or exceed pressure rating of PE pipe per 49 CFR Part 192 and ASTM D2513.

POLYETHYLENE PIGTAILS

For Butt Fusion Applications with GasBreaker™ Excess Flow Valves

GasBreaker™ EXCESS FLOW VALVES				
EFV SIZE	PE SIZE	WALL	PART NUMBER (2406/2708)	PART NUMBER (3408/4710)
GasBreaker™ SERIES 350	1/2" CTS (5/8" OD)	.090	0000-33-5779-24	0000-33-5779-34
		.062	0000-33-5777-24	0000-33-5777-34
GasBreaker™ SERIES 300	1" CTS (1 1/8" OD)	.099/.101	0000-33-5781-24	0000-33-5781-34
		.090	0000-33-5780-24	0000-33-5780-34
	3/4" IPS	SDR-11 (.095)	0000-33-5783-24	0000-33-5783-34
1" IPS	SDR-11 (.119)	0000-33-5784-24	0000-33-5784-34	
GasBreaker™ SERIES 700	1" CTS (1 1/8" OD)	.099/.101	0000-33-5787-24	0000-33-5787-34
		.090	0000-33-5786-24	0000-33-5786-34
	3/4" IPS	SDR-11 (.095)	0000-33-5789-24	0000-33-5789-34
1" IPS	SDR-11 (.119)	0000-33-5790-24	0000-33-5790-34	
GasBreaker™ SERIES 1800	1" CTS (1 1/8" OD)	.099/.101	0000-33-5792-24	0000-33-5792-34
		.090	0000-33-5791-24	0000-33-5791-34
	3/4" IPS	SDR-11 (.095)	0000-33-5794-24	0000-33-5794-34
1" IPS	SDR-11 (.119)	0000-33-5795-24	0000-33-5795-34	



• For PE sizes and/or EFV series not listed, contact Continental Industries.

IDENTIFICATION RINGS

These ID rings are made from aluminum tubing. They are designed to be placed at the meter for easy identification that an EFV has been installed in the service line.

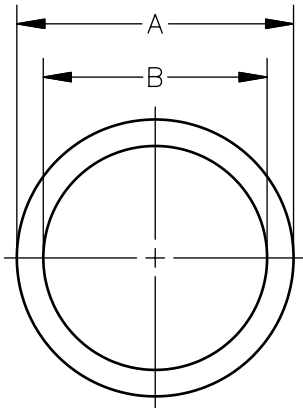


FIG 1

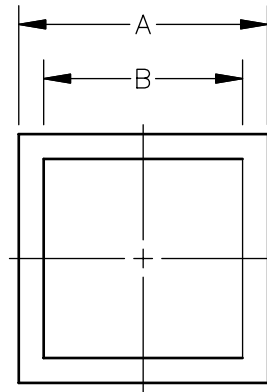
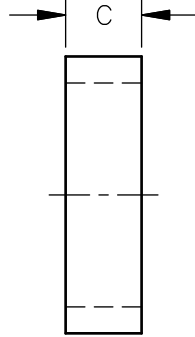
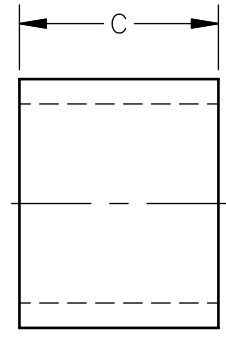


FIG 2



IDENTIFICATION RINGS					
PART NUMBER	FIG	A	B	C	NOTES
0000-23-5658-01	1	1 3/8"	1 1/8"	3/8"	STENCILED W "EXCESS FLOW VALVE-EFV"
0000-23-5658-06	1	1 3/8"	1 1/8"	3/8"	
0000-23-5658-07	1	1 3/8"	1 1/8"	3/8"	COLOR: ANODIZED GOLD COLOR
0000-23-5658-08	1	2"	1 3/4"	3/8"	
0000-23-5658-09	1	2 3/4"	2 1/2"	3/8"	
0000-23-5982-01	2	1 3/4"	1 1/2"	1"	
0000-23-5983-01	2	2"	1 3/4"	1"	
0000-23-5984-01	2	3"	2 3/4"	1"	

For sizes not listed, contact Continental Industries.

If you would prefer to have the ID ring packaged with your fitting(s), just add an "R" to the end of the catalog number (ex 3259-52-1004-70R).



0000-23-5658-01

0000-23-5658-06
0000-23-5658-08
0000-23-5658-09

0000-23-5658-07

0000-23-5982-01
0000-23-5983-01
0000-23-5984-01

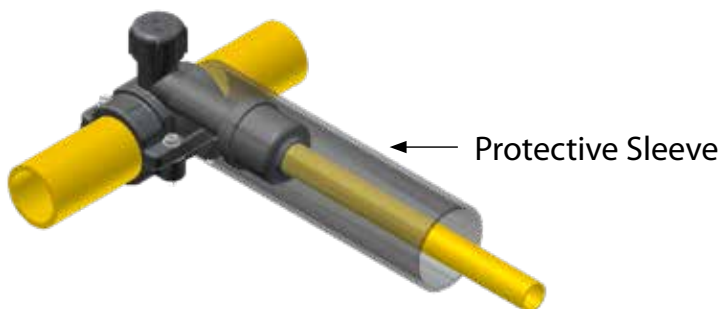


PE PROTECTIVE SLEEVES



CATALOG NUMBER	DIAMETER		LENGTH	FOR USE WITH CONTINENTAL PRODUCTS		
	INTERNAL	OUTSIDE		STEEL FITTINGS	PA FITTINGS	STAB FITTINGS
44-2585-00	1.370/1.395	1.612	12"			
44-2586-00	1.875/1.915	2.190	12"		3/8" OD & 5/8" OD P.E. Compression O/L's	
44-2587-00	2.375/2.425	2.760	12"	3/8" OD, 5/8" OD P.E. Compression O/L's	1 1/8" OD P.E. Compression O/L's	
44-2588-00	2.375/2.425	2.760	21"	5/8" OD, 1/2" IPS & 3/4" IPS P.E. Transition O/L's		
44-2589-00	2.875	3.270	24"	7/8" OD, 1/2" IPS P.E. Compression O/L's	3/4" IPS & 1" IPS P.E. Compression O/L's	5/8" OD, 7/8" OD, 1 1/8" OD, 1/2" IPS, 3/4" IPS & 1" IPS O/L's
				1 1/8" OD, 1" IPS P.E. Transition O/L's		
44-5753-00	4.250 MIN.	4.760	24"	1 1/8" OD, 3/4" IPS, 1" IPS, 1 1/4" IPS & 1 1/2" IPS P.E. Compression O/L's	1 1/4" IPS P.E. Compression O/L's	1 1/4" IPS & 1 1/2" IPS O/L's
				1 1/4" IPS P.E. Transition O/L's		
44-5754-00	5.200 MIN.	5.820	36"		2" IPS P.E. Compression O/L's	2" IPS O/L's

NOTE: It is advisable to limit shear at main connections. In this regard, your company's policies should be followed. For further information, reference; ASTM D 2774 Standard Practice for Underground Installation of Thermoplastic Pressure Piping; Code of Federal Regulations, Title 49, Transportation Part 192; AGA Plastic Pipe Manual and/or The Guidance Manual for Operators of Small Gas Systems by the U.S. Department of Transportation.






Con-Stab ID Seal® Fittings

FACTS • FEATURES • BENEFITS

FACTS

- The Con-Stab has been sold to the Gas Distribution Plumbing & Propane markets since 1990
- Millions are in service in the U.S.
- The Con-Stab meets the following standards:
 - ASTM D 2513 “Standard Specification for Thermoplastic Gas Pressure Pipe, Tubing and Fittings”
 - ASME B31.8-1995 “Gas Transmission and Distribution Piping Systems”
 - D.O.T., Title 49 of the Code of Federal Regulations, Part 192.283 (b)
 - NFPA 58, LP-Gas Code and NFPA 54 National Fuel Gas Code
 - CSA
 - ICC – International Plumbing Code
 - IAPMO – Uniform Plumbing Code
 - First Stab Connector to be rated at 125 psi
 - Continental is a ISO 9001 Certified Company
 - All U.S. Made and Assembled 
 - The Con-Stab product line is the fastest growing Connector product line in the U.S.



FEATURES & BENEFITS

- Each Con-Stab has Two Internal Seals between the Stiffener and the Pipe
 - **Benefit:** This is the most consistent and smoothest sealing area on P.E. pipe
- Fixed Stiffener
 - **Benefit:** Fixed Stiffeners eliminate uneven loading of the pipe wall at the sealing point
- Self Locking Gripper
 - **Benefit:** Gripper is engaged once the pipe is inserted to stab depth
No internal pressure needed for grip engagement
- Material Options P.E. 3408/4710 or P.E. 2406
 - **Benefit:** Both materials available upon request to satisfy your Customer’s needs
- Moisture Lip
 - **Benefit:** This helps prevent debris from entering the Connector
- Uni-body Construction
 - **Benefit:** No external parts to handle during assembly
- Con-Stab Pressure Rating
 - **Benefit:** Meets or exceeds the maximum design pressure of the piping system
- Product Line Offering has over 2,000 Various Options
 - **Benefit:** For Every Connection we have a Connector
- No Tools Needed for Assembly
 - **Benefit:** Just Chamfer the pipe and push
No equipment to buy for assembly
No equipment maintenance
- Assembly Instructions On Every Bag with Illustrations
 - **Benefit:** Makes training and assembly for end user easy
- Chamfer Tool
 - **Benefit:** Available with blades for extended use



OTHER PRODUCTS FROM HGCA

Hubbell Gas Connectors & Accessories, headquartered in Tulsa, Oklahoma with locations California, Wisconsin and Illinois We engineer and manufacture, with a commitment to providing our customers the highest quality products at the best value.

For gas distribution, Hubbell Gas Connectors & Accessories (HGCA) supplies a full line of specialty products, offering turnkey solutions for main-to-meter connections. No other single manufacturer can offer the variety of fittings that HGCA provides. Whether you need to connect PE to PE, PE to PVC, PE to Steel, PE to Copper or Steel to Steel, chances are HGCA has one to do the job. HGCA is an ISO 9001 certified company. Our products meet or exceed all ASTM and D.O.T. requirements and make safe, reliable and economical connections.

Advance Engineering is a National Leader in providing the Gas Utility Industry and other related markets with fabricated meter sets and high grade pipe nipples for 75 plus years. Together with our sister company Perfect Pipe and Supply, our turnkey operations provides the Gas Utilities Industry with fabrications starting in the Residential 250 Class arena and going up to Gate Station fabrication. We have a complete line of fabricated Bypass sets for all Diaphragm and Rotary Meter configurations.



The GasBreaker Brand has served the natural gas industry since 1970. In 1974, GasBreaker EFVs became the premier Excess Flow Valves used on gas service lines to protect homes and businesses. Since their introduction millions of GasBreaker EFVs have been sold (More than 5 times as many valves as all US competitors combined) and installed worldwide, providing tens of billions of field service hours. Today the GasBreaker Excess Flow Valve is known as "The EFV of Choice."



As one of the most trusted names in gas pipeline components manufacturing since 1973, the Lyall Corporation has an undisputed reputation for quality. The Lyall mission is to consistently manufacture the safest, most reliable and installer-friendly gas pipeline products available. From midstream to local distribution and all points between, Lyall keeps the gas industries moving.





Gas Connectors & Accessories

Continental Industries

Superior Quality

Superior Service

Superior Selection



1140 North 129th East Ave. Tulsa OK 74116

Phone: 918-627-5210

Fax: 918-6221275

www.conind.com

0000-99-1039-00 ECN 2729 REV "Z" 01/18

