

## Protect your network in harsh environments

### HI-Impact™ Copper Solutions

Hubbell HI IMPACT solutions provide protected solutions to connect copper in harsh environments so you can extend your network wherever you need it. Support the growing number of connected edge devices in non-traditional areas with speeds up to 10Gbe. IP rated and durable connections ensure network reliability and wide range of solutions supports network cabling, Wi-Fi APs, cameras, card access, automation, & controls wherever it is needed.

#### Features

- TIA 568 CAT6A and CAT6 Solutions available
- IP Rated connections to protect against dust and water ingress
- UV and chemical resistance
- COBRA-LOCK™ terminations available

#### Benefits

- Supports up to 10Gbe applications
- Optimized performance in harsh environments
- Variety of accessories available
- Meet the needs of a wide range of applications

#### Applications

- Stadiums/public venues
- Parking garages/car washes/gas stations
- Hospitals/healthcare/laboratories/pharmaceuticals
- Education campuses
- Restaurants/food service
- Marine
- Manufacturing facilities & warehousing
- Transportation



# HI-Impact™ Copper Connectors

Robust and reliable. Copper connectors are ETL verified for performance.

## User friendly design for quick connection and installation.



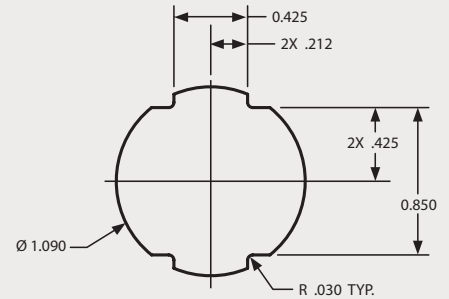
### Durability

Rugged construction for the most punishing environments.



### Interface

User-friendly quick connect positive indication when fully engaged.



### Installation

Standard 3/4" conduit knockout simplifies installation

## Specifications

- Vibration: frequency range 10-500Hz
- Acceleration: 5g (operational)
- Mating cycles: 750 minimum
- Hi-Impact housing: thermoplastic, UL 94V-O

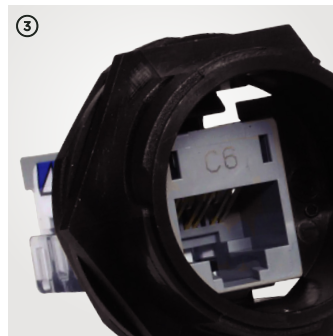
## Standards

- TIA-568.2-D Category 6A & Category 6
- Up to IEEE 802.3bt 4PPoE
- Ingress protection: IP67 (dust/water)

## HI-Impact Copper Connectors

Includes (1) housing, (1) jack, (1) flat bulkhead gasket, and (1) retaining nut

Description	Catalog No.
HI-Impact Category 6A Unshielded Jack, includes HJU6AW ①	<a href="#">HI6A</a>
HI-Impact Category Shielded 6A Jack, includes HJS6A ②	<a href="#">HI6AS</a>
HI-Impact Category 6A Shielded Coupler, includes SFCSC6A	<a href="#">HIS6AC</a>
HI-Impact Category 6 Unshielded Jack, includes HXJ6GY ③	<a href="#">HI6</a>
HI-Impact Category 6 Unshielded Coupler, includes SFC6W	<a href="#">HI6C</a>
HI-Impact Category 6 COBRA-LOCK Jack, includes HJU6W	<a href="#">HI6CL</a>
HI-Impact Protective Cap ④	<a href="#">HIC</a>



# HI-Impact™ Patch Cords

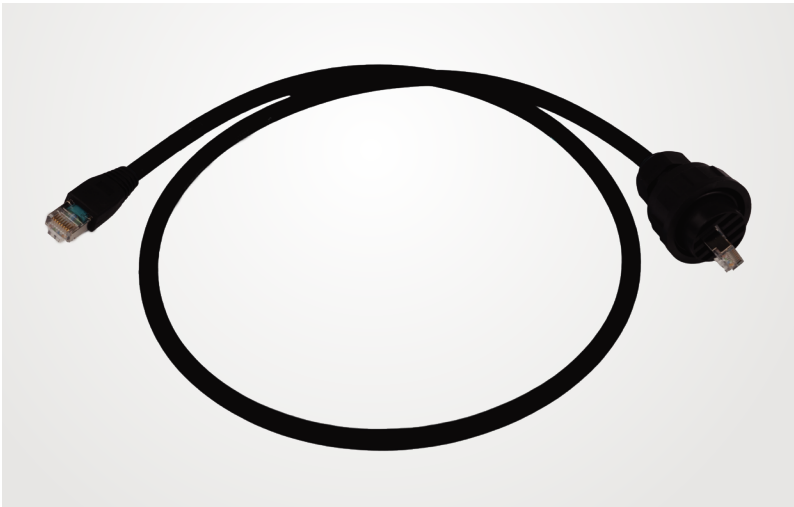
Select HI-Impact RJ45s to mate with HI-Impact jacks for a protected connection. Standard RJ45s mate with equipment and other standard RJ45 ports.

## Specifications

- Housing temperature range: -\*25°C to 70°C
- Thermoplastic UL 94V-0
- Rugged, UV & chemical resistant black jacket

## Standards

- TIA-568.2-D Category 6A & Category 6
- Up to IEEE 802.3bt 4PPoE
- Ingress protection: IP67 (dust/water)



## HI-Impact Patch Cord Assembly Chart



## HI-Impact Patch Cords

### Category 6A Shielded for use in Shielded & Unshielded Applications

Description	3 Feet	5 Feet	7 Feet	10 Feet	15 Feet	20 Feet
HI-Impact CAT6A RJ45 to Standard RJ45	HI6A03AE	HI6A05AE	HI6A07AE	HI6A10AE	HI6A15AE	HI6A20AE
HI-Impact CAT6A RJ45 on both sides	HI6A03EE	HI6A05EE	HI6A07EE	HI6A10EE	HI6A15EE	HI6A20EE
Standard CAT6A RJ45 on both ends	HI6A03AA	HI6A05AA	HI6A07AA	HI6A10AA	HI6A15AA	HI6A20AA
	25 Feet	30 Feet	35 Feet	40 Feet	45 Feet	50 Feet
HI-Impact CAT6A RJ45 to Standard RJ45	HI6A25AE	HI6A30AE	HI6A35AE	HI6A40AE	HI6A45AE	HI6A50AE
HI-Impact CAT6A RJ45 on both sides	HI6A25EE	HI6A30EE	HI6A30EE	HI6A40EE	HI6A45EE	HI6A50EE
Standard CAT6A RJ45 on both ends	HI6A25AA	HI6A30AA	HI6A35AA	HI6A40AA	HI6A45AA	HI6A50AA

### Category 6 UTP

Description	3 Feet	5 Feet	7 Feet	10 Feet	15 Feet	20 Feet
HI-Impact CAT6 RJ45 to Standard RJ45	HI603AE	HI605AE	HI607AE	HI610AE	HI615AE	HI620AE
HI-Impact CAT6 RJ45 on both sides	HI603EE	HI605EE	HI607EE	HI610EE	HI615EE	HI620EE
Standard CAT6 RJ45 on both ends	HI603AA	HI605AA	HI607AA	HI610AA	HI615AA	HI620AA
	25 Feet	30 Feet	35 Feet	40 Feet	45 Feet	50 Feet
HI-Impact CAT6 RJ45 to Standard RJ45	HI625AE	HI630AE	HI635AE	HI640AE	HI645AE	HI650AE
HI-Impact CAT6 RJ45 on both sides	HI625EE	HI630EE	HI630EE	HI640EE	HI645EE	HI650EE
Standard CAT6 RJ45 on both ends	HI625AA	HI630AA	HI635AA	HI640AA	HI645AA	HI650AA

## Accessories

### Stainless Steel Wallplates

Port Size	Gangs	Catalog No.
1	1	<a href="#">HISF11</a>
2	1	<a href="#">HISF12</a>
	2	<a href="#">HISF22</a>
4	2	<a href="#">HISF24</a>



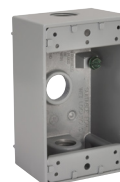
### Thermoplastic 4-Point FS/FD Wallplates

Port Size	Gangs	Color	IP Rating	Catalog No.
1	1	Gray	55	<a href="#">HI14GY</a>
		Yellow	55	<a href="#">HI114PY</a>
2	1	Gray	55	<a href="#">HI24GY</a>
		Yellow	55	<a href="#">HI124PY</a>



### Weatherproof Device Box

Knock-out	Protection Level	Color	Catalog No.
1/2"	NEMA Type 3R	Gray	<a href="#">HIWP05GY</a>
3/4"	NEMA Type 3R	Gray	<a href="#">HIWP75GY</a>



### Watertight FD Boxes

*IP65, 66, 69K suitability*

Color	3/4" Hub	1" Hub
Gray	<a href="#">HBL6083</a>	<a href="#">HBL6084</a>
Yellow	<a href="#">HBL60CM83A</a>	<a href="#">HBL60CM84A</a>

*\*Compatible with single gang, one port FS/FD wall plates HI14GY and HI11PY.*



### HI-Impact Couper Housing

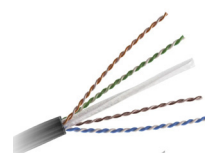
Description	Catalog No.
Coupler Drop Housing, Copper or Fiber, IP67	<a href="#">HICHCF</a>

*\*Connectors not included*



### Indoor/Outdoor Plenum Rated Cables

Description	Catalog No.
Category 6A	<a href="#">C6AIOSPBK</a>
Category 6	<a href="#">C6IOSPBK</a>



### Outdoor Cables

Description	Catalog No.
Category 6A, F/UTP Construction	<a href="#">C6ASOPBK</a>
Category 6, UTP Construction	<a href="#">HC6SOPBK</a>

