

iStation A/V

HDBaseT 3.0 In-Wall HDMI Extender

Hubbell's High-Definition 110 Video Extender with HDBaseT transmits uncompressed 4K video signals over one solid, unshielded, twisted-pair (UTP) cable, allowing video display devices to be located up to 328 feet away from a digital source. Additionally it supports repeating of IR, and USB control signals and also includes a 3.5 mm audio jack. Ideal for interactive white boards, projectors, HDTVs, flat screens, monitors and other video display devices. The Hubbell HDBaseT Extender feature multiple LEDs to indicate that power and signal are working properly. 110 punchdown termination reduces installation time and Hubbell's unique design allows both source and display device to be installed in back boxes. Hubbell's unique offering of connection, power, and delivery products provides solutions needed for today's A/V requirements in educational, commercial, and retail applications.



Features

- Locate a display device up to 328 feet (100m) away
- Terminate with one Category 6A UTP or shielded cable
- Supplied as a kit with both Source and Display modules
- 110 Termination Reduces Installation Time
- Source and Display Modules can both be Installed in Back Boxes so there are no external boxes

Standards

- Listed UL AZOT/7
- HDMI, HDCP2.2 | CEC
- USB 2.0 High Speed (480mbps)
- RoHS compliant

Specifications

- Connectors: HDMI 19-pin, Type A, female connector, gold plated 2μ"
- IDC Contact: phosphor bronze with tin plating over nickel under plating
- Material: steel housing



Performance

Applications:

- Uncompressed HDMI 2.0 (18Gbps - 4K@60Hz 4:4:4)
- Video maximum support: 4K: 4096x2160 OR 3840 x 2160p @ 60Hz
- 4:4:4 24bit
- HDCP 2.2
- CEC control
- Distance: (100m/328ft)
- Audio signal: 2ch PCM; up to 7.1 DTS-X and DOLBY ATMOS®
- Analog audio pass through 3.5mm jacks
- USB Type A, 2.0 High Speed (480mbps), selectable Host or Device

Electrical:

- Category 6A or higher cables required; up to 328 ft (100m)
- Power: Front or rear 5V DC input on each device
- DC power wire length: up to 50ft with 16 AWG

Mechanical:

- Minimum box depth: 3" for flush mounting. 2.5" for non-flush instantiations
- HDMI: 250 insertions

Ordering Information

HDBaseT Modules

Description	Installation	Kit	Transmitter	Receiver
110 HDBaseT Extender: 4K HDMI, USB, 3.5mm Audio, IR, Decorator, Black	Single 4-pair CAT6A UTP Cable *5V DC Power Supply required on each end (sold separately)	ISFHDSBK	ISFHDT5BK	ISFHDR5BK

Complementary Products and Accessories

AV Power Supply Outlet

Description	Input Voltage	Output Voltage	Color	Catalog No.	
				15A, 125V	20A
AV Power Supply Tamper-Resistant Decorator Receptacle, w/ (1) USB Port 5A, 5V DC output	125V AC	5V DC	Black	AVPS152BK	AVPS202BK
			Ivory	AVPS152I	AVPS202I
			Gray	AVPS152GY	AVPS202GY
			Light Almond/ Office White	AVPS152LA	AVPS202LA
			White	AVPS152W	AVPS202W



External 5.5V DC Power Supply

Catalog No.
HDMIDC5V2

Infrared Emitter and Receiver Kit

Catalog No.
AVIR

In-Wall AV Switching Transmitters

Description	Catalog No.
(1) VGA, (1) HDMI	ISFHDT421BK
(3) HDMI	ISFHDT431BK



Accessory - AV Wall Boxes

Description	Catalog No.
2-Gang	HBL985
3-Gang	HBL986

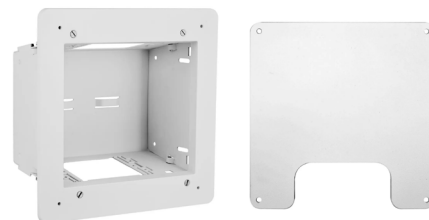


High Speed HDMI Patch Cords

Description	Color	Catalog No.
3 Foot		HCH03BK
6 Foot	black	HCH06BK
10 Foot		HCH06BK

FPTV Connection Enclosure

Description	Catalog No.
2-Gang In-Wall Enclosure, White	NSAV62M
4-Gang In-Wall Enclosure, White	NSAV124M
Steel Cover for NSAV124M, White	NSAV6C
Steel Cover for NSAV62M, White	NSAV12C



Decorator Wallplates

Description	Catalog No.	Color	XX
1-Gang without Label Field	NP26XX	Almond	AL
2-Gang without Label Field	NP262XX	Black	BK
1-Gang with Label Field	IFP126XX	Gray	GY
2-Gang with Label Field	IMFP2XX	Ivory	I
		Office White/ Light Almond	OW
		White	W

XX = Color



A proud member of the Hubbell family.

©2023 Hubbell Premise Wiring. All rights reserved.
Hubbell and the Hubbell logo are registered trademarks or trademarks of Hubbell Incorporated.
All other trademarks are the property of their respective owners.
hubbell.com/hubbellpremisewiring
Phone 1-800-626-0005 | Fax 1-860-535-8328

EP-PREM-TECH-SF-EN-00873 | REV 10 2023