



Entertainment

PRODUCT SOLUTION GUIDE



Your next great event can depend on our great performance.

The dynamic and unpredictable environments you face each day place high demands on your equipment. Hubbell devices reliably deliver secure connections that let you turn your attention to the details critical for a flawless show, no matter the venue.

Our devices tailored to the entertainment industry exceed requirements. For more than 130 years, our focus is on creating innovative products that provide performance, durability, convenience, with aesthetics, and safety.

The quality and detail built into every product can take the harsh, everyday abuse unique to producing a show. All black plugs and connectors blend seamlessly into the background. Series 15, 16, and 18 single pole devices with a double cam stand up to repeated mating. Angled plugs from 15A to 60A fit into tight spaces where cable management is critical.

Safety is always a top priority for us. You can count on products designed and manufactured to exceed UL standards. Hubbell Wiring Device-Kellems has been a standard in the entertainment industry so the show can go on.



Table of Contents

Stage Pin Devices 4

Straight Blade Devices 6

Insul-Lock® 7

Twist-Lock® Devices 8

Single Pole Devices 12

Pin and Sleeve Devices 14

Watertight Devices 15

Hose and Cable Protection Systems 16

Wire Management 17

Straight Blade Receptacles and USB Devices . . . 18

Portable GFCI and Temporary Power Boxes . . . 19



Flexible | Safe | Rugged | Reliable



Athletic Facilities



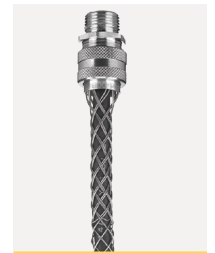
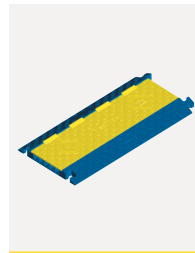
Performing Arts



Studio & Television



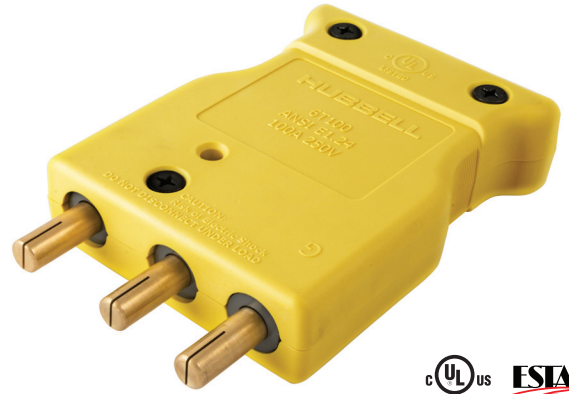
Amusement Parks



Stage Pin Devices

Heat resistant, impact resistant and easy to wire

- Durable thermoplastic construction is lightweight, with durable body for maximum impact resistance
- Secure terminations use stainless steel double set screws with fine pitch threads to maximize termination strength for cooler running connections



Adjustable Strain Relief

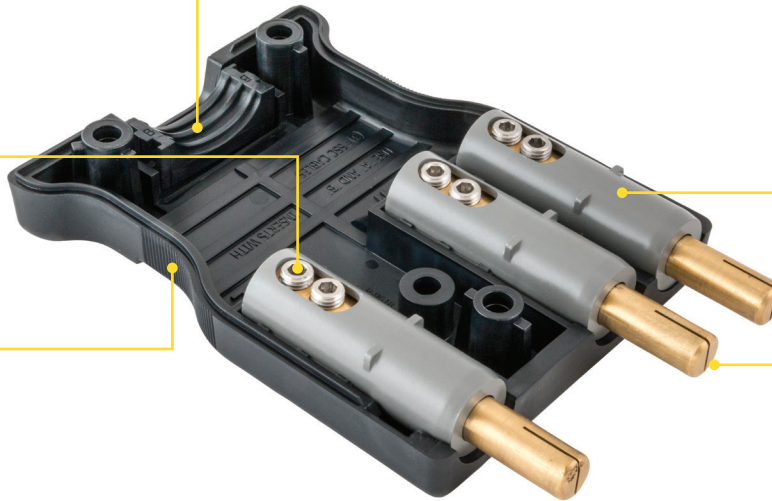
Accommodates the widest range of cables all in one device while exceeding UL requirements

High Performance Brass Contacts

Provide improved performance and extended life by reducing operating temperatures

Ergonomic Shape

For easy insertion and withdrawal from mating devices

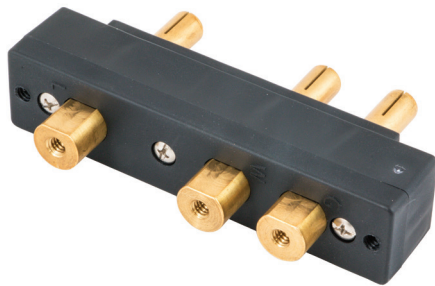


Heat Resistant Sleeves

Patent pending, highly stable and heat resistant contact shrouds provide phenolic functionality with a modern twist

Simplified Wiring

Removable contacts that snap back into place for greater wiring flexibility and simplicity



Termination Styles

Ring Terminal and Double Set Screw termination options are available for 60A and 100A panel mounts

Hubbell Stage Pin devices were designed in collaboration with industry experts, resulting in the most user friendly, highest performing devices in the industry.

Stage Pin devices exemplify our commitment to always improve our products.





20 Amp Stage Pin Devices

Description	Voltage	Termination	Color	Catalog Number
Male Inline Male Inline Bulk Pack Male Inline	125V	Double Set Screw	Black Black Clear	HBL20SPM HBL20SPMOEM HBL20SPMC
Female Inline Female Inline Bulk Pack Female Inline	125V	Double Set Screw	Black Black Clear	HBL20SPF HBL20SPFOEM HBL20SPFC
Male Panel Mount (Inlet) Female Panel Mount	125V	Double Set Screw	Black	HBL20SPMR HBL20SPFR



60 Amp Stage Pin Devices

Description	Voltage	Termination	Color	Catalog Number
Male Inline Female Inline	125V	Double Set Screw	Black	HBL60SPM HBL60SPF
Male Panel Mount	125V	Double Set Screw Ring Terminal	Black	HBL60SPMR HBL60SPMRRT
Female Panel Mount	125V	Double Set Screw Ring Terminal	Black	HBL60SPFR HBL60SPFRRT



100 Amp Stage Pin Devices

Description	Voltage	Termination	Color	Catalog Number
Male Inline Female Inline	125V	Double Set Screw	Black	HBL100SPM HBL100SPF
Male Panel Mount	125V	Double Set Screw Ring Terminal	Black	HBL100SPMR HBL100SPMRRT
Female Panel Mount	125V	Double Set Screw Ring Terminal	Black	HBL100SPFR HBL100SPFRRT
Male Inline Female Inline	250V	Double Set Screw	Yellow	HBL106SPM HBL106SPF
Male Panel Mount	250V	Double Set Screw Ring Terminal	Yellow	HBL106SPMR HBL106SPMRRT
Female Panel Mount	250V	Double Set Screw Ring Terminal	Yellow	HBL106SPFR HBL106SPFRRT

Single Cable Sets and Breakouts in One Device

Device	Cable Combination	Device	Cable Combination
60A/125V	(3) #6 SC (6) #6 SC (2) #4 SC	100A/ 125V	(2) #4 SC (4) #4 SC (2) #2 SC
	#8/3 #6/3 #4/3		#6/3 AWG #4/3 AWG
	(1) #6 SC TYPE W S00W TYPE W		(1) #6 SC (2) #6 SC (1) #6 SC TYPE W TYPE W



Hubbell stage pin devices feature a removable sleeve that is heat-stable and heat-resistant. It does not allow the heat generated at the connection to negatively impact the device. Like phenolic devices of the past, this modern innovation will provide for a cool running device that is simple and convenient to wire.

The super tough engineered thermoplastic housing makes the device:

- Lightweight
- Impact resistant
- Easy to handle

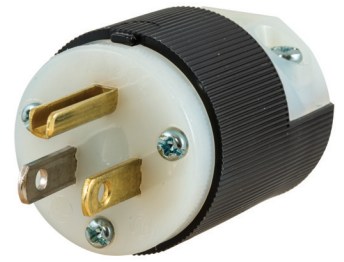
Our design delivers 'The Best of Both Worlds!'



Straight Blade Devices

Straight Blade Devices

- Durable, impact and chemical-resistant nylon construction ensures reliability
- Integral VARI-SIZE® insert accommodates a wide range of cord diameters (.23 to .72 in.)
- Visible catalog number while in use offers easy identification
- All black EBK versions have a large cord clamp to close flush on 10/3 cords (.36 to .72 in)
- Ultra-bright LEDs let the user know that power is present and flowing to the device



Flanged Inlets and Receptacles

- Equipment mounting flanges fit flush on panel surfaces
- All nylon construction resists stress cracking and breakage
- Fits with weatherproof covers

All Black Straight Blade Devices

Amps	Volts	NEMA Code#	Poles/Wires	AC HP Rating	Heavy Duty Plug			Connector Body		
					All Black	EBK	EBK 100pc. Bulk	All Black	EBK	EBK 100pc. Bulk
15	125V	5-15	2P/3W	0.5	HBL5266CM2 HBL5266CBKST*	HBL5266EBK HBL5266CBKST*	HBL5266EBKM1 HBL5266CBKSTM1*	HBL5269CM2 HBL5269CBKST*	HBL5269EBK HBL5269CBKST*	HBL5269EBKM1 HBL5269CBKSTM1*
20	125V	5-20		1	HBL5366CM2 HBL5366CBKST*	HBL5366EBK HBL5366CBKST*	HBL5366EBKM1 HBL5366CBKSTM1*	HBL5369CM2 HBL5369CBKST*	HBL5369EBK HBL5369CBKST*	HBL5369EBKM1 HBL5369CBKSTM1*

*EdgeConnect



Straight Blade Devices

Amps	Volts	NEMA Code#	Poles/Wires	AC HP Rating	Heavy Duty Plug		Connector Body		8-Position Angle Plug	Flanged Inlet	Flanged Receptacle
					Black/White	Clear/Illuminated	Black/White	Clear/Illuminated			
15	125V	5-15	2P/3W	0.5	HBL5266C HBL5266CST*	515LP	HBL5269C HBL5269CST*	515LC	HBL5266CA	HBL5278C	HBL5279C
20	125V	5-20		1	HBL5366C HBL5366CST*	520LP	HBL5369C HBL5369CST*	520LC	HBL5366CA	HBL5378C	HBL5379C

*EdgeConnect



Straight Blade Colored Cord Clamps*

Description	Color	Catalog Number
For use with 15A and 20A, 2 pole/3 wire, insulgrip plugs and connectors with cord diameter range of .230"-.720" (5.8-18.3) only.	Blue	HBLCORDCLAMPBL
	Green	HBLCORDCLAMPGN
	Orange	HBLCORDCLAMPOR
	Purple	HBLCORDCLAMP
	Red	HBLCORDCLAMP
	Yellow	HBLCORDCLAMPY

Note: *Clamp only. Contains no screws. Order in increments of 10. Not UL Listed or CSA Certified.

Safety and Durability
Hubbell straight blade devices maintain reliable power connections to prevent performance interruptions. Use them for all types of entertainment applications, from cord sets to cases to panel mounting.

Insul-Lock™ Connectors and Panel Mounts

Miniature Power Connections for Entertainment Applications

Insul-Lock™ Plus Connectors

- 20A, 250V AC rated
- Rated for disconnect under load
- IP65 rated
- UL 50E Type 4 rated when used with weatherproof covers
- Connectors accept up to 12/3 AWG SO cable which meets NEC 520.68 requirements for extra-hard usage cords or cables
- Panel mount devices accept commonly available .25" spade style connectors
- Industry standard mating, interchangeable with installed base

Insul-Lock™ Plus Connectors

Description	Male Connector Power In	Female Connector Power Out
Locking cable connector, screw terminals	HBLMC	HBLFC

Insul-Lock™ Plus Panel Mounts

Description	Inlet	Outlet
1/4" tab terminations with divider	HBLMPD	HBLFPD
1/4" tab terminations, without divider	HBLMP	HBLFP

Insul-Lock™ Plus Accessories

Description	Inlet	Outlet
Spring loaded weatherproof cover	HBLMPC	HBLFPC
Dust protection cap	HBLMPDC	HBLFPDC



Insul-Lock™ Connectors

- 25A, 250V rated
- Connectors accept up to 12/3 AWG SO cable Meets NEC 520.68 requirements for extra-hard usage cords or cables
- Color coded blue for power in and gray for power out
- Panel mount devices accept commonly available .25" spade style connectors. Simplifies installation for domestic OEM's
- Industry standard mating Interchangeable with installed base
- Impact-resistant thermoplastic construction; suitable for use in UL1640 applications

Inline Connectors

Amps	Power In (Blue)	Power Out (Gray)
25 Amp	HBLCPIBL	HBLCPOGY

25 Amp Panel Mounts

Style	Power In (Blue)	Power Out (Gray)
Standard	HBLPMIBL	HBLPMOgy
Divided	HBLPMIDBL	HBLPMODgy

Accessories

Description	Catalog Number
Panel mount retainer plate	HBLPMRP
Panel mount M3x.5 screw, 8mm long	HBLPMSC



Ideal for use with LED lighting and other applications including multiple screen video walls. The rear of the connector is black to blend in when used in visible areas.

Twist-Lock® Devices

Only Hubbell Makes Twist-Lock Devices

- Superior cord grip design protects terminations from excess strain
- High performance, reliable terminations for maintaining trouble free connections
- High-impact nylon construction with voltage color-coding resists abuse and facilitates easy identification
- All black EBK versions have a large cord clamp to close flush on 10/3 cords



Twist-Lock EdgeConnect™ Devices

- Faster termination time (up to 80% faster)
- No need for screwdriver and torque wrench
- No strand relaxation
- No exposed metal
- No need to re-torque over time



Twist-Lock Circuit Testers

- Developed specifically for entertainment techs, quickly diagnose a miswired situation or application
- Great for dark, difficult to reach spaces
- No measurement readings to interpret



Twist-Lock Circuit Testers

Description	Rating	20 Amp	30 Amp
3-Phase Circuit Tester	3Ø 120/208V AC Min. Voltage: 90V AC	NEMA L21-20P	NEMA L21-30P
		HBL3PT2511	HBL3PT2811
Circuit Tester	125V	NEMA L5-20P	NEMA L5-30P
		HBLT2311	HBLT2611 HBLT26CM11 (Marine)
	250V	NEMA L6-20P	NEMA L6-30P
		HBLT2321	HBLT2621
	277V	NEMA L7-20P	—
		HBLT2331	—
	125/250V	NEMA L14-20P	NEMA L14-30P
		HBLT2411	HBLT2711
	347V	NEMA L24-20P	—
		HBLT3721	—

Note: Testers in other NEMA configurations can be developed upon request.

Twist-Lock Colored Cord Clamps*



Description	Color	For 3 Wire Devices	For 4 & 5 Wire Devices
For use with 20A and 30A Insulgrip® Twist-Lock® Plugs and Connectors. Cord diameter: 3 wire .350"-.930" (9-24), 4 & 5 wire .350"-.1150" (9-29)	Black	HBLTL2CCBK	HBLTL3CCBK
	Blue	HBLTL2CCBL	HBLTL3CCBL
	Brown	HBLTL2CCBR	HBLTL3CCBR
	Green	HBLTL2CCGR	HBLTL3CCGR
	Orange	HBLTL2CCOR	HBLTL3CCOR
	Teal	HBLTL2CCTL	HBLTL3CCTL
	Dark Blue	HBLTL2CCDB	HBLTL3CCDB
	White	HBLTL2CCWH	HBLTL3CCWH
	Yellow	HBLTL2CCYL	HBLTL3CCYL
	Red	HBLTL2CCRD	HBLTL3CCRD

Note: *Clamp only. Contains no screws. Order in increments of 10. Not UL Listed or CSA Certified.

All Black and EBK Twist-Lock Devices



NEMA Rating Color Coded by		NEMA Code #	Poles/Wires	AC HP Rating	Plug		Connector Body	
Amps	Voltage				All Black	All Black EBK	All Black	All Black EBK
15	125V	L5-15	2P/3W	0.5	HBL4720CBK	—	HBL4729CBK	—
20	125V	L5-20		1	HBL2311STBK*	HBL2311EBK	HBL2313STBK*	HBL2313EBK
	250V	L6-20		2	HBL2321STBK*	HBL2321EBK	HBL2323STBK*	HBL2323EBK
30	125V	L5-30	2	HBL2611STBK*	—	HBL2613STBK*	—	
	250V	L6-30	2	HBL2621STBK*	HBL2621EBK	HBL2623STBK*	HBL2623EBK	
20	125/250V	L14-20	3P/4W	2(1)	HBL2411STBK*	—	HBL2413STBK*	—
30	125/250V	L14-30		2	HBL2711STBK*	—	HBL2713STBK*	—
20	3ØY 120/208V AC	L21-20	4P/5W	2	HBL2511STBK*	—	HBL2513STBK*	—
30	3ØY 120/208V AC	L21-30		3	HBL2811STBK*	—	HBL2813STBK*	—

*EdgeConnect

Our Twist-Lock Tester is an exclusive patented design that easily tests the circuit condition without the need for traditional measurement techniques. Knowing that power is present at any receptacle or connector is critical. An LED output will immediately provide the status of the circuit.

Twist-Lock® Devices

NEMA Rating Color Coded by		NEMA Code #	Poles/Wires	AC HP Rating	Plug	Connector Body		Receptacle	Flanged Receptacle	Flanged Inlet
Amps	Voltage					Black/White	Black/White			
15	125V	■ L5-15	2P/3W	0.5	HBL4720C HBL4720CST	HBL4729C HBL4729CST	HBL4710ST*	HBL4715C	HBL4716C	
	250V	■ L6-15			1.5	HBL4570C HBL4570CST	HBL4579C HBL4579CST	HBL4560ST*	HBL4585C	HBL4586C
20	125V	■ L5-20		1		HBL2311ST*	HBL2313ST*	HBL2310 HBL2310ST*	HBL2316ST*	HBL2315ST*
	250V	■ L6-20		2	HBL2321ST*	HBL2323ST*	HBL2320 HBL2320ST*	HBL2326ST*	HBL2325ST*	
	480V AC	■ L8-20		3	HBL2341	HBL2343ST*	HBL2340	HBL2346ST*	HBL2345ST*	
30	125V	■ L5-30		2	HBL2611ST*	HBL2613ST*	HBL2610 HBL2610ST*	HBL2616ST*	HBL2615ST*	
	250V	■ L6-30		2	HBL2621ST*	HBL2623ST*	HBL2620 HBL2620ST*	HBL2626ST*	HBL2625ST*	
	480V AC	■ L8-30		5	HBL2641ST*	HBL2643ST*	HBL2640	HBL2646ST*	HBL2645	
20	125V/250V	■ L14-20		3P/4W	2 (1)	HBL2411 HBL2411ST*	HBL2413ST*	HBL2410 HBL2410ST*	HBL2416ST*	HBL2415 HBL2415ST*
	3Ø 250V AC	■ L15-20			3	HBL2421 HBL2421ST*	HBL2423ST*	HBL2420 HBL2420ST*	HBL2426ST*	HBL2425 HBL2425ST*
	3Ø 480V AC	■ L16-20			5	HBL2431 HBL2431ST*	HBL2433ST*	HBL2430 HBL2430ST*	HBL2436ST*	HBL2435 HBL2435ST*
30	125V/250V	■ L14-30			2	HBL2711 HBL2711ST*	HBL2713ST*	HBL2710 HBL2710ST*	HBL2716ST*	HBL2715 HBL2715ST*
	3Ø 250V AC	■ L15-30	3		HBL2721 HBL2721ST*	HBL2723ST*	HBL2720 HBL2720ST*	HBL2726ST*	HBL2725 HBL2725ST*	
	3Ø 480V AC	■ L16-30	10		HBL2731 HBL2731ST*	HBL2733ST*	HBL2730 HBL2730ST*	HBL2736ST*	HBL2735 HBL2735ST*	
20	3ØY 120/208V AC	■ L21-20	4P/5W		2	HBL2511 HBL2511ST*	HBL2513ST*	HBL2510 HBL2510ST*	HBL2516ST*	HBL2515 HBL2515ST*
	3ØY 120/208V AC	■ L22-20			5	HBL2521 HBL2521ST*	HBL2523ST*	HBL2520 HBL2520ST*	HBL2526ST*	HBL2525 HBL2525ST*
30	3ØY 120/208V AC	■ L21-30			3	HBL2811 HBL2811ST*	HBL2813ST*	HBL2810 HBL2810ST*	HBL2816ST*	HBL2815 HBL2815ST*
	3ØY 120/208V AC	■ L22-30			10	HBL2821 HBL2821ST*	HBL2823ST*	HBL2820 HBL2820ST*	HBL2826ST*	HBL2825 HBL2825ST*

*EdgeConnect

Non-NEMA Devices

20	20A 250V 10A 600V AC		4P/5W		HBL3521C HBL3521CST*	HBL3523C HBL3523CST*	HBL3520	HBL3525C	HBL3524C
----	-------------------------	--	-------	--	-------------------------	-------------------------	---------	----------	----------

*EdgeConnect

50 Amp Devices

50	125/250V AC		3P/4W		CS6365C	CS6364C	CS6369		CS6375
----	-------------	--	-------	--	---------	---------	--------	--	--------

Twist-Lock Bulk Packs

Description	Catalog number
CAT# CS6364C, BULK 10	CS6364CM2
CAT #CS6365C, BULK 10	CS6365CM2
CAT#HBL2311, ALL BLACK, BULK 30	HBL2311M15
CAT#HBL2311, BULK 50	HBL2311M20 HBL2311STM1*
CAT#HBL2313, BULK 50	HBL2313M20
CAT#HBL2313, ALL BLACK, BULK 30	HBL2313M7
CAT#HBL2321, BULK 50	HBL2321M20 HBL2321STM1*
CAT#HBL2323, BULK 50	HBL2323M20
CAT #HBL2321M11, GRAY BODY AND BLACK CORD GRIPS AND FACE, BULK 50	HBL2321M11 HBL2321STM1*
CAT #HBL2323M11, GRAY BODY AND BLACK CORD GRIPS AND FACE, BULK 50	HBL2323M11

*EdgeConnect



Designed specifically for the entertainment industry, our all black Insulgrip wiring devices offer the same reliability as the black and white versions, meeting requirements for durability, aesthetics and safety. All black plugs and connectors blend into the background, keeping the focus on the entertainment, and not the wiring.



Super fast connections for greater efficiency

For decades, installers have had to spend considerable time wiring each screw and torquing it down with a screwdriver or torque wrench, with the responsibility of measuring and ensuring the integrity of each connection. Even experienced installers needed well over a minute to terminate one device.

With the Twist-Lock® EdgeConnect™ Screwless Termination system, simply insert the wire and press the plunger down. No tools are required. That connection is fool-proof and long lasting, with no special experience or skills needed to all but guarantee a high quality result. Any qualified installer regardless of level of training can guarantee a high quality result. Elapsed time? About 11 seconds!

Labor savings is easy!



Insert

Press...termination is activated!

To unwire, lift the plunger upward



Simply move the plunger upwards to unwire

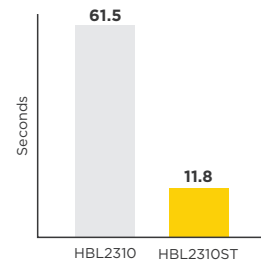


With this new termination method, NEC® code 110.14(D) "Terminal connection torque" requiring the use of a torque driver to secure the terminations is no longer applicable.

Time study analysis

	Screw Terminated Device	Screwless Terminated Device
Example catalog number	HBL2310	HBL2310ST
	Seconds	Seconds
Time per pc	61.5	11.8

Seconds saved with screwless termination, per piece **49.7**



For every application

Applications subject to vibration or thermal cycling benefit from increased performance and productivity savings with Hubbell's Edge technology. Perfect for use in power distribution systems, for powering motor drives, or simply installing equipment on the production floor.

Improve labor time on a repetitive, time consuming task by 80%!

Certifications



Listed to UL 498



Verified to Federal Specification W-C-596h
(Plugs and flanged inlets only)



Certified to CSA C22.2 No.42

OEMs

Save money with 80% reduction in installation time, while providing consistently reliable connections.

Electricians

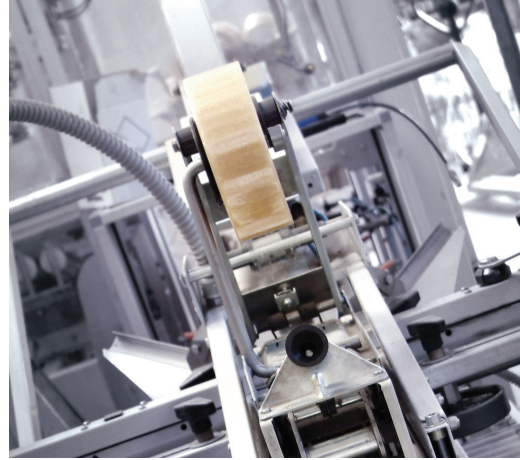
Terminate in just 11 seconds, no torque screwdriver required, with no exposed live metal.

Electrical contractors

Ensure quick yet reliable installations, even in harsh environments.



*National Electrical Code® and NEC® are registered trademarks of the National Fire Protection Association, Quincy, MA.



Plugs and flanged inlets
4 and 5 wire plugs and flanged inlets will bring enormous benefits to more users than ever before—such as OEMs and machine manufacturers, maintenance and repair operations, builders and other professionals who must efficiently and cost-effectively install up to thousands of plugs every day.

The highest reliability—even under constant vibration!

The terminations are tight from day one and stay tight, gripping hard to keep the power flowing even through high vibration environments that can steadily work wires loose and cause unscheduled downtime.

Wires secured with Hubbell Twist-Lock® EdgeConnect™ screwless termination devices not only stay tight, they actually dig in and get tighter in the face of the relentless vibration from industrial equipment which constantly threatens the integrity of traditional connections.

Throughout industry, vibration is generally expected to degrade, not improve, a product's performance in every instance. Not with Twist-Lock EdgeConnect devices—tough environments just make them perform even better and even more reliably for our users.

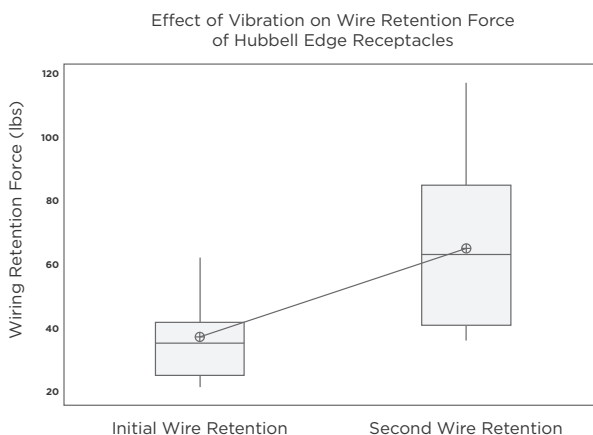
Similar performance is also demonstrated in the face of related industrial threats such as temperature cycling and strand relaxation. No matter what the environment, with Twist-Lock Edge devices you won't have to go back and retighten—just install once and you're all set.



Device has been cut open for side viewing.

Vibration performance

25%-60% higher retention



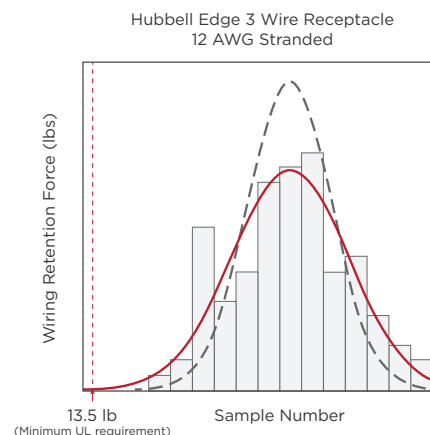
Upon installation, a 10 AWG THHN stranded wire required 40 lbs of force to disengage.

After exposure to vibration per the UL standard, 65 lbs of force were required to disengage the wire.

Three-axis vibration sequence test performed in accordance with "UL 498, Standard for Safety—Attachment Plugs and Receptacles"

Wire retention

13.5 lb UL minimum requirement



When compared to the minimum UL requirement for wire retention, Twist-Lock EdgeConnect screwless termination offers superior strength.

Single Pole

Single Pole Devices - Series 15

150A, 600V AC

- Enclosure Types 3R, 4X, 12
- Combo head, non-metallic safety retaining screw
- Insulgrip® body design
- Accepts 8 AWG-2 AWG wire
- Colors available: black, blue, brown, green, gray, orange, red, white and yellow
- UL and cULus Listed

Single pole devices are the right choice for supplying temporary electrical power distribution for entertainment, theme parks, carnival equipment, concerts, movie making and numerous other applications requiring temporary power.

Single pole devices have been designed with ease of assembly and disassembly in mind; no special tools are required.

150 Amp, Inlines



Description	Male	Female
Thermoplastic elastomer, cable size #8 - #2 AWG	HBL15Mxx	HBL15Fxx

150 Amp, Receptacles, Stud Type 11/16" x 3/4"



Description	Male	Female
Thermoplastic, panel mount	HBL15FRSxx	HBL15MRSxx

150 Amp, Receptacles, Double Set Screw



Description	Female	Male
Thermoplastic, cable size #8 - #2 AWG	HBL15FRxx	HBL15MRxx

Protective Caps



Description	Fits Male Devices	Fits Female Devices
Fits 150 amp inlines and receptacles	HBL15MCAPxx	HBL15FCAPxx
Fits 300/400 amp inlines and receptacles	HBLMCAPxx	HBLFCAPxx

xx=color: **BK** (Black), **W** (White), **GN** (Green), **R** (Red), **BL** (Blue), **BN** (Brown), **O** (Orange), **Y** (Yellow) and **GY** (Gray).

Gender Reversing Devices



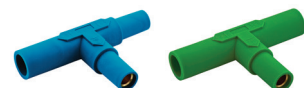
Description	Double Male	Double Female
Fits 300 and 400 amp inlines and receptacles	HBLDMxx	HBLDFxx

3-Fers



Description	Male-Fem-Fem-Fem	Fem-Male-Male-Male	Soft 3-Fers
Fits 300 and 400 amp inlines and receptacles	HBLM3Fxx	HBLF3Mxx	HBLM3FSBK HBLF3MSGN

xx=color: **BK** (Black), **W** (White), **GN** (Green), **R** (Red), **BL** (Blue), **BN** (Brown), **O** (Orange) and **Y** (Yellow).



Tees

Description	Tapping Tee	Paralleling Tee
Fits 150 amp inlines and receptacles	HBL15Txx	HBL15PTxx



Gender Reversing Devices

Description	Double Male	Double Female
Fits 150 amp inlines and receptacles	HBL15DMxx	HBL15DFxx



Weather Protective Covers

Description	Catalog Number
Use with 150 amp stud type or double set screw receptacles	HBL15NCxx
Use with 300/400 amp stud type or double set screw receptacles	HBLNCxx HBLNCAxx

xx=color: **BK** (Black), **W** (White), **GN** (Green), **R** (Red), **BL** (Blue), **BN** (Brown), **O** (Orange), **Y** (Yellow), **GY** (Gray) and **C** (Clear).



Tees

Tapping Tee: Fem-Fem-Male	Paralleling Tee: Fem-Male-Male
HBLTxx	HBLPTxx



Distribution Block

1 Male, 6 Females
HBL7DBxx

Single Pole Devices—Series 16 & 18

300A and 400A, 600V AC

- Enclosure Types 3R, 4X, 12
- Non-metallic safety retaining screw
- Insulgrip® body design
- Accepts 6 AWG - 4/0 wire
- Colors available: black, blue, brown, green, gray, orange, red, white and yellow
- UL and cUL Listed



Our Single Pole connectors are made from a specially formulated thermoplastic elastomer (TPE) that resists cracking in cold, hot or oily conditions as well as any other harmful environments that may be found within the entertainment industry.



300A, 400A, Inlines

Description	Male Plug	Female Plug
Series 16 300 amp, thermoplastic elastomer, cable size #6-2/0 AWG	HBL300Mxx	HBL300Fxx
Series 16 400 amp, thermoplastic elastomer, cable size 2/0-4/0 AWG	HBL400Mxx	HBL400Fxx
Series 18 300 amp, thermoplastic elastomer, cable size #2-2/0 AWG	HBL18300Mxx	HBL18300Fxx
Series 18 400 amp, thermoplastic elastomer, cable size 3/0-4/0 AWG	HBL18400Mxx	HBL18400Fxx

Receptacles, Stud Type

Description	Through Hole Mounting	
	Female	Male
Panel mount, thermoplastic elastomer	HBLFRSxx	HBLMRSxx

Receptacles, Double Set Screw

Description	Through Hole Mounting	
	Female	Male
Panel mount, thermoplastic elastomer	HBLFRxx	HBLMRxx

Receptacles, Bus Bar Mount

Description	Straight Receptacles	
	Female	Male
Panel mount, thermoplastic elastomer	HBLFRBxx	HBLMRBxx
2-hole bus bar	HBLFRB2xx	HBLMRB2xx

Offset Terminals

Description	Straight Style	
	Female	Male
Panel Mount, thermoplastic elastomer	HBLFOSxx	HBLMOSxx

Angled Receptacles, Stud Type

Description	Angled Receptacles	
	Female	Male
Panel Mount, thermoplastic elastomer	HBLFRASxx	HBLMRASxx

Threaded Hole Mounting

Female	Male
HBLFRSCxx	HBLMRSCxx

Angled Receptacles

Female	Male
HBLFRAx	HBLMRAx

Angled Receptacles

Female	Male
HBLFRABxx	HBLMRABxx

Angled Style

Female	Male
HBLFOAx	HBLMOAx

xx=color: BK (Black), W (White), GN (Green), R (Red), BL (Blue), BN (Brown), O (Orange) and Y (Yellow).

Pin & Sleeve Wiring Devices

IEC Pin and Sleeve

- Provide safe and dependable performance in the most demanding environments
- Heavy duty non-conductive nylon construction provides impact and corrosion protection
- Pin and Sleeve devices are available in configurations from 20A 125V to 100A 600V AC

Advantage™ Series

- Disconnecting means for both motor circuits and branch circuits
- Switch-rated connectors established new benchmarks for mechanical and electrical performance
- Compact design device is similar in size to standard IEC 60309-2 devices, receptacles mount to standard Hubbell IEC Pin and Sleeve back boxes
- Upgrade to a switch-rated connection: Add an “S” to standard catalog number HBL430C7W » HBSL430C7W



IEC Pin and Sleeve Type 4X/IP69k

Rating Color Coded by Voltage	Poles/Wires	Plug	Connector*	Receptacle*
20A 125/250V	3P/4W	HBL420P12W	HBL420C12W	HBL420R12W
20A 3Ø 480V	3P/4W	HBL420P7W	HBL420C7W	HBL420R7W
30A 125/250V	3P/4W	HBL430P12W	HBL430C12W	HBL430R12W
30A 3Ø 480V	3P/4W	HBL430P7W	HBL430C7W	HBL430R7W
30A 3ØY 120/208V	4P/5W	HBL530P9W	HBL530C9W	HBL530R9W
60A 125/250V	3P/4W	HBL460P12W	HBL460C12W	HBL460R12W
60A 3Ø 480V	3P/4W	HBL460P7W	HBL460C7W	HBL460R7W
60A 3ØY 120/208V	4P/5W	HBL560P9W	HBL560C9W	HBL560R9W
100A 125/250V	3P/4W	HBL4100P12W	HBL4100C12W	HBL4100R12W
100A 3Ø 480V	3P/4W	HBL4100P7W	HBL4100C7W	HBL4100R7W
100A 3ØY 120/208V	4P/5W	HBL5100P9W	HBL5100C9W	HBL5100R9W

*Change the prefix to HBSL for Switch-Rated P&S SKUs. For example the switch-rated version of the HBL430C7W is the HBSL430C7W.

Convention Center Pin and Sleeve

- Manufactured with durable light-weight polycarbonate construction to withstand heavy impact
- Mates with existing installed base
- Single device that accepts both round and flat cable



Low Profile Convention Center Pin & Sleeve

Rating Color Coded by Voltage	Poles/Wires	Plug	Connector	Receptacle	Inlet
60A 277/480V	4P/5W	HBL5607P	HBL5607C	HBL5607R	HBL5607B



Switch-Rated Advantage Series

The Advantage series now includes a 30A, 60A, and 100A offering which are the first and only IEC 60309-2 Pin and Sleeve Switch-Rated Devices in the market place.

Once again, we bring more advantages to the switch-rated market establishing new benchmarks in both performance and innovation!



Watertight Safety
When it comes to safety, most everyone knows that water and electricity can create a dangerous environment. Ensuring a watertight seal for electrical devices is critical to ensuring maximum safety of personnel in any wet environment. Our Watertight Twist-Lock® devices have become the industry standard for maintaining a watertight seal.

Watertight Wiring Devices

Watertight Safety-Shroud® Twist-Lock Devices

- Maintains UL Type 4X watertight seal when in use and when disconnected with use of closure cap
- Safety-Shroud recessed blades provide protection against bending and breaking for a longer life
- Neoprene sealing gland and thermoplastic guard assure sealing when fully connected

Watertight Devices

- Double insulated elastomeric cover with thermoplastic body for extra safety and water resistance
- NEMA 4, 4X, 6P Rated and IP69k Suitability
- Corrosion-resistant nickel plated blades and stainless steel captive assembly screws



Watertight Safety Shroud Twist-Lock Devices

NEMA Rating Color Coded by Voltage	Poles/Wires	Plug	Connector	Flanged Inlet	Receptacle
20A 125V	2P/3W	HBL2311SW	HBL2313SW	HBL2315SW	HBL2310SW
20A 250V	2P/3W	HBL2321SW	HBL2323SW	HBL2325SW	HBL2320SW
20A 125/250V AC	3P/4W	HBL2411SW	HBL2413SW	HBL2415SW	HBL2410SW
20A 3Ø 250V	3P/4W	HBL2421SW	HBL2423SW	HBL2425SW	HBL2420SW
20A 3Ø 480V	3P/4W	HBL2431SW	HBL2433SW	HBL2435SW	HBL2430SW
30A 125V	2P/3W	HBL2611SW	HBL2613SW	HBL2615SW	HBL2610SW
30A 250V	2P/3W	HBL2621SW	HBL2623SW	HBL2625SW	HBL2620SW
30A 125/250V	3P/4W	HBL2711SW	HBL2713SW	HBL2715SW	HBL2710SW
30A 3Ø 250V	3P/4W	HBL2721SW	HBL2723SW	HBL2725SW	HBL2720SW
30A 3Ø 480V	3P/4W	HBL2731SW	HBL2733SW	HBL2735SW	HBL2730SW



Watertight Devices

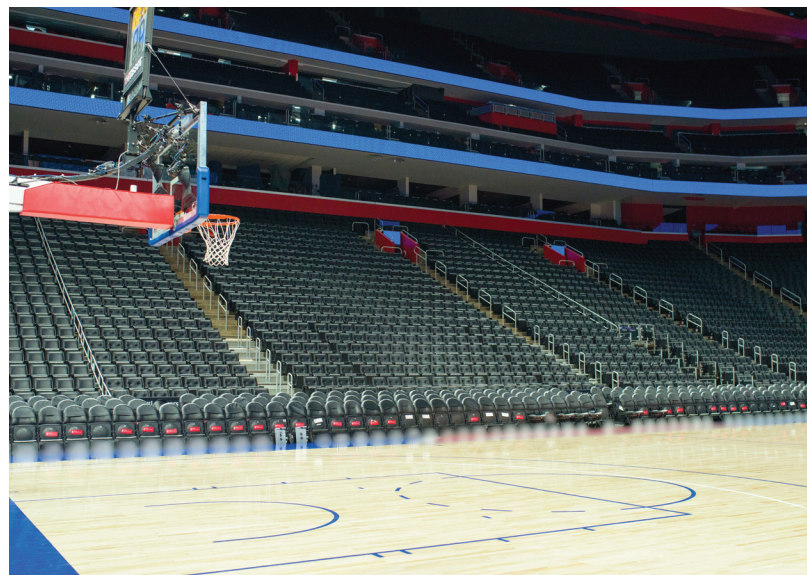
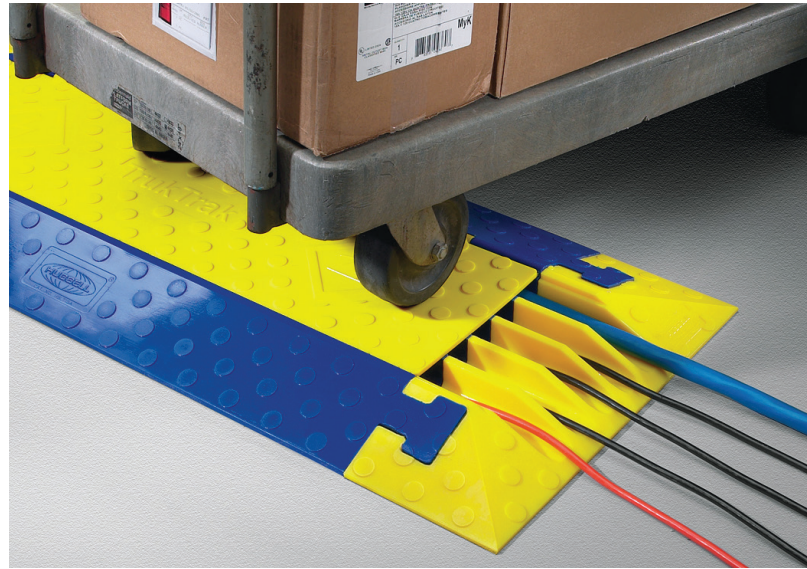
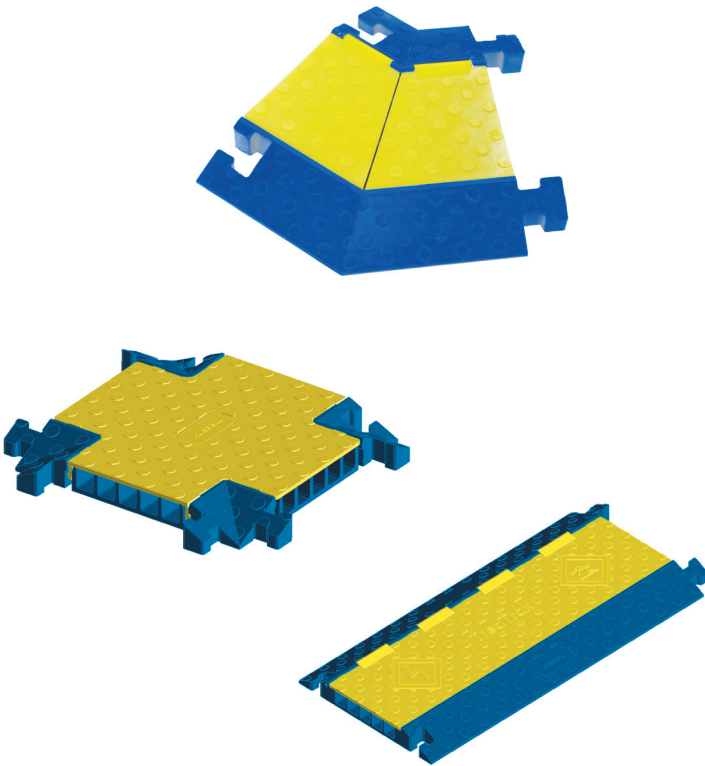
NEMA Rating Color Coded by Voltage	Poles/Wires	Plug			Connector			Receptacle Yellow
		Yellow	Black	Clear/LED	Yellow	Black	Clear/LED	
15A 125V	2P/3W	HBL24W47A	HBL24W47BK	HBL24W47AWC	HBL25W47A	HBL25W47BK	HBL25W47AWC	HBL65W47
20A 125V	2P/3W	HBL26W47	HBL26W47BK	HBL26W47WC	HBL27W47	HBL27W47BK	HBL27W47WC	HBL67W47
20A 250V	2P/3W	HBL26W48	HBL26W48BK	—	HBL27W48	HBL27W48BK	—	HBL67W48
20A 125/250V AC	3P/4W	HBL26W74	—	—	HBL27W74	—	—	HBL67W74
20A 3Ø 250V	3P/4W	HBL26W75	HBL26W75BK	—	HBL27W75	HBL27W75BK	—	HBL67W75
20A 3Ø 480V	3P/4W	HBL26W76	HBL26W76BK	—	HBL27W76	HBL27W76BK	—	HBL67W76
30A 125V	2P/3W	HBL28W47	HBL28W47BK	—	HBL29W47	HBL29W47BK	—	HBL69W47
30A 250V	2P/3W	HBL28W48	—	—	HBL29W48	—	—	HBL69W48*
30A 125/250V	3P/4W	HBL28W74	—	—	HBL29W74	—	—	HBL69W74
30A 3Ø 250V	3P/4W	HBL28W75	HBL28W75BK	—	HBL29W75	HBL29W75BK	—	HBL69W75*
30A 3Ø 480V	3P/4W	HBL28W76	HBL28W76BK	—	HBL29W76	HBL29W76BK	—	HBL69W76*

Note: *For black devices add BK suffix.

Hose and Cable Protection Systems

Hose and Cable Protection Systems TrukTrak® and TredTrak®

- Safeguards cables and cords from vehicle and pedestrian traffic
- TrukTrak is ideal for events where trucks and forklifts are present while TredTrak supports pedestrian and light vehicle traffic in public, institutional and commercial applications
- Complies with NEC® Article 525 for insulating cables at carnivals, amusement parks, convention centers and similar public areas



TrukTrak and TredTrak Systems

Description	TrukTrak®	TredTrak®
5 Channel, blue and yellow	HBLTT5B	HBLTRED5B
5 Channel end caps (pair only), yellow	HBLTT5ECB	HBLTRED5ECB
5 Channel female end caps (2 females), yellow	—	HBLTRED5ECFB
5 Channel 45° right turn, blue and yellow	HBLTT545RB	—
5 Channel 45° left turn, blue and yellow	HBLTT545LB	—
5 Channel "X" fitting, blue and yellow	—	HBLTRED5XB
5 Channel "Y" fitting, blue and yellow	—	HBLTRED5YB
3 Channel, blue and yellow	HBLTT3B	—
3 Channel end caps (pair only), yellow	HBLTT3ECB	—
2 Channel, blue and yellow	HBLTT2B	—

Hubbell's Hose and Cable Protection System is designed to support pedestrian and light vehicle traffic in public, institutional and commercial applications. Our modular cable protection line also permits compliance with NEC® requirements (Article 525) for insulating electrical cables and cord at carnivals, amusement parks, convention centers and similar public areas.



Kellems wire mesh products are available for a wide variety of applications including supporting and strain relief of electrical cords. The design provides an even amount of pressure over the length of the grip and prevents the cord from damage and kinking.

The support grip line has multiple eyes for attaching grips to any support structure. The strain relief line of mesh controls arc-of-bend and protects terminations from excessive strain.

Wire Management

Cord Connectors

- GOTCHA® ring incorporates a split hinge design to prevent friction and provide strain relief
- The connector body is a one-piece design with machined threads that provide a strong positive seal
- A tapered interior seats the bushing evenly for a liquidtight seal

Strain Relief Grips

- Multi-weave grip products provide arc-of-bend control minimizing cable damage and extending cable life
- Ideal for providing maximum safety where conduit is subject to vibration, motion or strain
- Stainless steel mesh is corrosion resistant and optional liquidtight fittings provide a watertight seal

Support Grips

- Ideal for ensuring safety by supporting electrical cable service drops or hoses
- Available in tin-coated bronze or stainless steel, heavy duty, standard and light duty for a variety of applications



Straight Male

NPT Hub Size	Cord Diameter Inches (mm)	Machined Aluminum	Machined Zinc-Plated Steel	Nylon Gray	Nylon Black
1/2	.38"-.50" (9.7-12.7)	SHC1023	SHC1023ZP	SHC1023CR	SHC2023CR
	.50"-.63" (12.7-15.9)	SHC1024	SHC1024ZP	SHC1024CR	SHC2024CR
3/4	.63"-.75" (15.9-19.0)	SHC1037	SHC1037ZP	SHC1037CR	SHC2037CR



Kellems® Deluxe Cord Grips

NPT Thread Size	Grip Diameter Range Inches (cm)	Straight Male Thread	Straight Female Thread	90° Male Thread	45° Male Thread
1/2	.187"-.250" (.47-.63)	07401004	—	07401074	—
	.250"-.375" (.63-.95)	07401006	—	07401076	074011236
	.375"-.500" (.95-1.27)	07401008	07401043	07401078	074011021
	.500"-.625" (1.27-1.59)	07401010	07401045	07401080*	074011237
3/4	.187"-.250" (.47-.63)	07401011	—	—	—
	.250"-.375" (.63-.95)	07401013	—	—	—
	.375"-.500" (.95-1.27)	07401015	—	07401081	—
	.500"-.625" (1.27-1.59)	07401017	07401052	07401083	074011049
	.625"-.750" (1.59-1.90)	07401018	07401053	07401084*	074011051*
	.750"-.875" (1.90-2.22)	074011249*	—	074011275*	074011239*

Note: *Cable jacket may have to be stripped to pass through connector body.

Single Eye, Closed Mesh**

For permanent support when cable end is available to be installed through grip.



Cable Diameter Range Inches (cm)	Approx. Breaking Strength Lbs. (N)	Catalog Number
.50"-.62" (1.27-1.57)	530 (2,357)	02201013
.63"-.74" (1.60-1.88)	790 (3,514)	02201014
.75"-.99" (1.90-2.51)	1,020 (4,537)	02201015
1.00"-1.24" (2.54-3.15)	1,610 (7,161)	02201017
1.25"-1.49" (3.17-3.78)	1,610 (7,161)	02201018
1.50"-1.74" (3.81-4.42)	1,610 (7,161)	02201019

Note: **Change catalog number from 022 to 024 for stainless steel. Consult factory for availability.

Single Eye, Split Mesh, Rod Closing**

For support when cable end is not available.



Approx. Breaking Strength Lbs. (N)	Catalog Number
790 (3,514)	02203013
790 (3,514)	02203014
1,020 (4,537)	02203015
1,610 (7,161)	02203017
1,610 (7,161)	02203018
1,610 (7,161)	02203019

Note: **Change catalog number from 022 to 024 for stainless steel. Consult factory for availability.

Straight Blade Receptacles and USB Devices

HBL® Extra Heavy Duty Compact Industrial Receptacles

- Heavy duty brass mounting strap and impact-resistant construction
- Compact device body for installation where space is limited

Hubbell-PRO Heavy Duty Specification Grade Receptacles

- Galvanized steel mounting strap and plated steel terminal screws for corrosion resistance
- Polycarbonate face and base provide impact resistance and durability
- Available in bulk packaging in red, black, and blue versions for high volume assemblers



HBL Heavy Duty Compact Industrial Receptacles

Color	Receptacles	
	15A	20A
Blue	—	HBL5352BL
Black	HBL5252BK	HBL5352BK
Red	HBL5252R	HBL5352R
White	HBL5252W	HBL5352W



EdgeConnect™ HBL Heavy Duty Industrial Grade Receptacles

Color	EdgeConnect Receptacles	
	15A	20A
Blue	HBL5262STBL	HBL5362STBL
Black	HBL5262STBK	HBL5362STBK
Red	HBL5262STR	HBL5362STR
White	HBL5262STW	HBL5362STW
Green	HBL5262STGN	HBL5362STGN



EdgeConnect Hubbell-PRO Heavy Duty Specification Grade Receptacles

Color	EdgeConnect Receptacles	
	15A	20A
Black	5262STBK	5362STBK
Blue	5262STBL	5362STBL
Red	5262STR	5362STR
White	5262STW	5362STW
Green	5262STGN	5362STGN

Extra Heavy Duty GFCI Receptacles

- Patented tamper-resistant design limits improper access to energized contacts
- Self-test units continually test and monitors for protection automatically
- No power at device face if reverse wired, eliminating false assumption of protection

Installation Efficiency

- 55W 20V 'Power Delivery' USB-C Port
- The new USB standard Type-C port supports faster mobile device charging
- Compliant with USB BC1.2 battery charging and 3.0 power delivery



AUTOGUARD® Self Test Tamper & Weather Resistant

Color	Receptacles	
	15A	20A
Brown	GFSG5262	GFSG5362
Black	GFSG5262BLK	GFSG5362BLK
Gray	GFSG5262GRY	GFSG5362GRY
Ivory	GFSG5262I	GFSG5362I
Red	GFSG5262R	GFSG5362R
White	GFSG5262W	GFSG5362W



USB Charging Receptacles Type-C • Type A&C

Description	Color	Type-C USB ports	Type A&C USB ports
Power Delivery 55 Watt, 20VDC 15A 125V	Brown	USB15CPD	USB15ACPD
	Black	USB15CPDBK	USB15ACPDBK
	Gray	USB15CPDGY	USB15ACPDGY
	Ivory	USB15CPDI	USB15ACPDI
	Lt. Almond	USB15CPDLA	USB15ACPDLA
Power Delivery 55 Watt, 20VDC 20A, 125V	White	USB15CPDW	USB15ACPDW
	Brown	USB20CPD	USB20ACPD
	Black	USB20CPDBK	USB20ACPDBK
	Gray	USB20CPDGY	USB20ACPDGY
	Ivory	USB20CPDI	USB20ACPDI
20A, 125V	Lt. Almond	USB20CPDLA	USB20ACPDLA
	White	USB20CPDW	USB20ACPDW

USB Charger 4 Port Outlet

Description	Type A 4 USB ports
Four USB Type A, class 2.0 ports, 5 Amp, 5 Volt DC, Style Line® decorator	USB4BK USB4I USB4LA USB4W



GFCI Safety Code

Combining GFCI protection and tamper-resistant safety provides an ideal “one-stop” Hubbell solution. Our tamper-resistant GFCI devices also include a weather-resistant rating per NEC® 406.9, providing UV and corrosion resistance for harsh, damp applications.

Note: See full line catalog for additional colors available.

Portable GFCI and Temporary Power Boxes

Portable GFCI Line Cords and Outlets

- Provides a watertight housing for maximum safety in harsh environments
- Available with either automatic and manual set feature to fit the application
- Meets UL943 requirements for self-test

Multiple Outlet Portable GFCI

- Ideal for providing safety in applications requiring multiple outlets
- Features gasketed cover to protect outlets not in use
- Meets UL943 requirements for self-test

Circuit Guard® Portable GFCI Line Cords



Description	Length	Automatic	Manual
15A 120V AC GFCI Cord Line	18 in. 6 ft. 25 ft.	GFPST4C15A GFPST6C15A GFPST25C15A	GFPST4C15M GFPST6C15M GFPST25C15M
15A 120V AC w/ Stripped Leads	15 ft.	GFPSTOEMA	GFPSTOEMM
20A 120V AC	3 ft.	GFPST3C20M	—

Multiple Outlet Portable GFCI



Description	Rating	Catalog Number
4-Outlet, 2-Duplex, Manual Set	15A 120V AC 20A 120V AC	GFP15M GFP20M



SPIDER® Temporary Power Distribution

- Ensure maximum safety for outdoor events
- Individual GFCI modules
- Gasketed latching receptacle lift covers
- Replaceable legs



Temporary Power Boxes

Max Rating	Type	Receptacle Rating	Protection Overload/GFI	Receptacle Type	
				Straight Blade	Twist-Lock®
Spider® II 30A, 120/240V AC	(7) Receptacles (1) Twist-Lock**	20A, 125V 30A, 120/240V	Yes/Yes No/No	SDSB1A	SDTL1A
Spider® II 50A, 120/240V AC	(7) Receptacles (1) Twist-Lock**	20A, 125V 50A, 125/250V	Yes/Yes No/No	SBSB1A	SBTL1A
Spider® II 60A, 3Ø 120/208V	(6) Receptacles (1) Pin & Sleeve*	20A, 125V 60A, 3ØY, 120/208V	Yes/Yes No/No	SCSBO	SCTLO
Commercial Spider® 50A 120/240V AC	(6) Receptacles (1) Twist-Lock® (1) Twist-Lock**	20A, 125V 30A, 250V 50A 125/250V	Yes/Yes Yes/No No/No	TPDS	TPDL

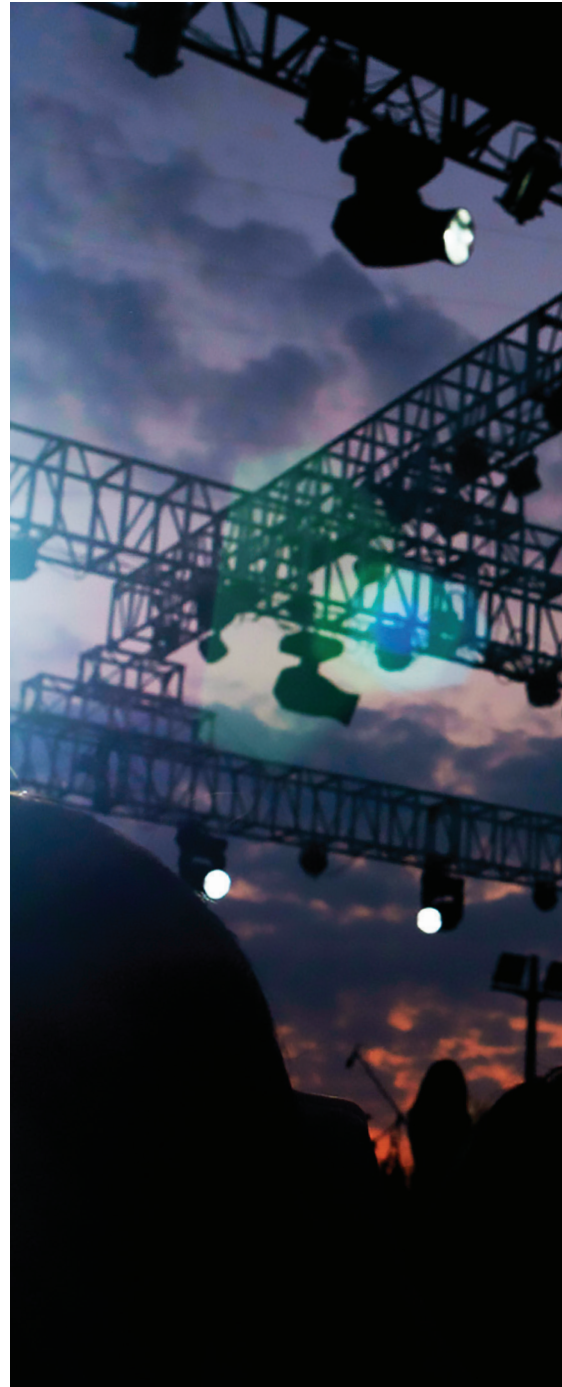
* Inlet and outlet.

Our SPIDER Temporary Power Distribution system incorporates the latest devices for reliably delivering safe, temporary power to a variety of equipment and lighting systems for outdoor events.

Cable Sets



Description	50 Amp	50 Amp
50 Ft. cord set for use with Spider II Boxes	SCB50	—
50 Ft. cord set for use with Temporary Boxes (TPD Series)	—	TPC50



A Hubbell brand

©2024 Hubbell Wiring Device-Kellems. All rights reserved.
Hubbell and the Hubbell logo are registered trademarks or trademarks of Hubbell
Incorporated. All other trademarks are the property of their respective owners.
40 Waterview Dr., Shelton, CT 06484
www.hubbell.com/wiringdevice-kellems | custserv@hubbell.com | 800-288-6000

EP-WDK-BR-EN-02183 | REV 06/2024