



ELECTRICAL PRODUCTS

Cord Reels



inREACH™ Industrial & Weatherproof Cord Reels

Hubbell's redesigned inREACH™ Industrial and Industrial Weatherproof Cord Reels enhance user safety and maximize efficiency by managing cord and power in a safe and organized manner, while also meeting the demands of tough industrial environments.

inREACH™ Industrial and Industrial Weatherproof Cord Reels are listed to UL 355 and CSA, C22.2 No. 308 with a durable, lightweight low profile cast aluminum construction. inREACH™ reels also feature an accessory mounting bracket for quick, easy installation on any surface.

inREACH™ *No matter what your need, Hubbell will always be inREACH™!*

inREACH™ Industrial Reels are built to provide safe, convenient power for demanding commercial and industrial applications and environments. These reels feature a 250V rating and can be ceiling, wall or bench mounted.

They are available with incandescent, fluorescent or LED hand lamps, as well as a variety of Hubbell 15 and 20 amp connectors and portable outlet boxes.

inREACH™ Industrial Weatherproof Reels are made for outdoor and washdown environments, with a 600V rating and UL Type 4 enclosure rating. They are designed for use with 15, 20 and 30 amp industrial products, such as portable outlet boxes, Insulgrip® and Twist-Lock® devices.

inREACH™ Industrial & Industrial Weatherproof Cord Reels

- Durable, corrosion resistant cast aluminum construction
- Yellow, white, or black powder coat finish
- Movable guide arm can be mounted in two positions
- Positive latch mechanism automatically maintains desired cord length
- Ratchet lock can be disengaged in field for constant tension applications
- 16-6AWG cord for greater current carrying capacity

inREACH™ Industrial Cord Reels

- UL Type 1
- 250V AC, SJO Type Cable
- Plug-in 5ft long power cord requires no electrical wiring

inREACH™ Industrial Weatherproof Cord Reels

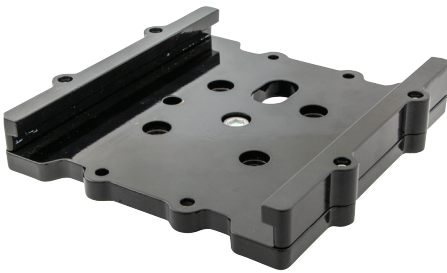
- UL Type 4
- 600V AC, SOW Type Cable
- NPT conduit hub



inREACH™ Mounting Bracket

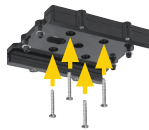
The inREACH™ mounting bracket allows you to decrease or eliminate the additional labor associated with installing reels at the end of the job.

*Labor Savings
are inREACH™!*



The inREACH mounting bracket can be installed during the earlier stages of the project, allowing for trim out of the cord reel at a fraction of the time and labor.

STEP 1



Secure the inREACH™ mounting bracket during the rough-in process.

STEP 2



Remove two hex bolts from the bracket. Slide the reel into the bracket.

STEP 3



Replace two hex bolts and secure screws to complete the job.

inREACH™ Plenum Rated Enclosure

Hubbell's inREACH™ plenum rated enclosure is the first of its kind, allowing customers to securely mount cord reels in drop ceilings, while isolating them from the plenum space. These enclosures are listed to UL2416, making them compliant with plenum requirements per the NEC.



The plenum enclosure is easily secured to the building structure using threaded rods.



Install almost any Hubbell inREACH cord reel using factory provided hardware and included 4 in. sq. electrical box.



Greatly improve aesthetics while maintaining code compliance.

Heavy Duty Industrial Weatherproof Cord Reels

Heavy Duty Industrial Weatherproof Reels are made for the most abusive and demanding environments, with a 600V rating and UL Type 4 enclosure rating. They are designed for use with 15, 20, and 30 amp industrial products such as portable outlet boxes, Insulgrip® and Twist-Lock® devices and pendant push-button stations.

Heavy Duty Industrial Weatherproof Cord Reels

- Powder coated, solid US steel construction
- Ratchet lock can be disengaged in field for constant tension application
- UL Type 4 enclosure protects spring motor, junction box, slip ring assembly and cable entrance from hosedown and corrosion
- Not supplied with end effectors
- 3/4 NPT conduit hub



Medical Cord Reels

inREACH Medical Cord Reels provide safe and convenient power designed specifically for medical facilities. Hospital Grade plugs and receptacles provide the most reliable performance in demanding medical applications. The all-white construction complies with sanitary practices by making contamination more visible and easier to clean.

Features

- A cast aluminum housing withstands corrosive environments
- Hospital grade, tamper-resistant receptacles provide four plug-in points, and a fully-illuminated LED face clearly indicates available power
- An optional inline GFCI module provides Class A ground fault protection even when the neutral conductor is compromised



Commercial Cord Reels

Commercial Cord Reels are designed for the less demanding requirements of commercial and light industrial environments. UL Listed, these reels feature a steel or non-metallic construction and a 125V rating with SJT type cord to provide power and lighting for all your needs.

Steel Commercial Cord Reels

- Compact, durable steel construction
- Flexible mounting options for ceiling, wall or bench
- Automatic ratchet lock maintains desired cord length and easy, smooth retraction

Non-Metallic Commercial Cord Reels

- Durable lightweight non-metallic housing
- 40 ft of 12/3 cord for greater current carrying capacity
- Triple tap outlet with supplemental overcurrent protection



RETAIL



BIG BOX STORE



AUTOMOTIVE REPAIR

Air/Water Hose Reels

Air/Water Hose Reels are highly versatile and ideal for tight spaces. The full flow shafts and swivels assure maximum product delivery.

Air/Water Hose Reels

- Constructed of rugged steel with baked polyester finish components
- Multi-position four roller guide and adjustable hose stop
- Spring rewind and ratchet lock



Static Discharge Reels

Static Discharge Reel ground portable equipment operating in hazardous environments. When properly clamped to ground, the static discharge reel will prevent the build up of static electricity and reduce the chance of sparking, which may cause an explosion.

Static Discharge Reels

- Steel housing construction available with steel or nylon coated steel cable
- Compact design minimizes required installation space
- Large grounding jaw clamp provides low resistance ground termination



CORD & HOSE REELS

inREACH™ INDUSTRIAL WEATHERPROOF CORD REELS

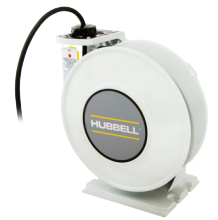
Description	Amps	Voltage	Cable Length ft. (m)	Cable Type	Weight lbs. (kg)	Catalog Number
White Weatherproof Industrial Reel	15A	600V AC	45 (13.7)	14/3 SOW 14/4 SOW	28.2 (12.8) 30.0 (13.6)	HBLW45143W* HBLW45144W*
	20A	600V AC	45 (13.7) 40 (12.2)	12/3 SOW 12/4 SOW	31.3 (14.2) 32.2 (14.6)	HBLW45123W* HBLW40124W*
	30A	600V AC	40 (12.2) 35 (10.7)	10/3 SOW 10/4 SOW	33.3 (15.1) 34.2 (15.5)	HBLW40103W* HBLW35104W*
	18A	600V AC	80 (24.4)	12/3 SOW	97.5 (44.2)	HBLW80123W
	16A	600V AC	80 (24.4)	12/4 SOW	107.4 (48.7)	HBLW75124W
	25A	600V AC	75 (22.9)	10/3 SOW	103.8 (47.1)	HBLW75103W
	20A	600V AC	75 (22.9)	10/4 SOW	116.2 (52.7)	HBLW75104W
	40A	600V AC	45 (13.7)	8/3 SOW	106.5 (48.3)	HBLW4583W
	30A	600V AC	60 (18.3)	8/3 SOW	123.2 (55.9)	HBLW6083W
	35A	600V AC	45 (13.7)	8/4 SOW	122.8 (55.7)	HBLW4584W
	55A	600V AC	45 (13.7)	6/3 SOW	123.0 (55.8)	HBLW4563W
	55A	600V AC	45 (13.7)	6/4 SOW	126.7 (57.5)	HBLW4564W
	14A	600V AC	45 (13.7)	12/8 SOW	107.4 (48.7)	HBLW45128W
	6A	600V AC	45 (13.7)	14/12 SOW	113.5 (51.5)	HBLW451412W

All industrial weatherproof cord reels are supplied with wire leads and 3/4", 1", or 1 1/4" NPT hub feed depending on the model. Power supply cable not supplied. | *For shorter cable lengths, modify length indication in catalog number (i.e. HBLWXX); 35ft & 25ft lengths are available. | *For yellow reel, remove 'W' suffix from catalog number.

inREACH™ INDUSTRIAL CORD REELS

Description		Amps	Voltage	Cable Length ft. (m)	Cable Type	Weight lbs. (kg)	Catalog Number
White Industrial Reel without end effectors		15A	250V AC	45 (13.7)	14/3 SJO 14/4 SJO	24.0 (10.9) 25.4 (11.5)	HBLI45143 HBLI45144
		20A	250V AC	45 (13.7)	12/3 SJO	26.5 (12.0)	HBLI45123
		18A	250V AC	70 (21.3) 90 (27.43)	12/3 SJO 12/3 SJO	79.6 (36.1) 86.5 (39.2)	HBLI70123 HBLI90123
		20A	250V AC	45 (13.7)	12/4 SJO	29.8 (13.5)	HBLI45124
		16A	250V AC	80 (24.4)	12/4 SJO	76.1 (34.5)	HBLI80124
		30A	250V AC	45 (13.7) 40 (12.2)	10/3 SJO 10/4 SJO	32.4 (14.7) 33.7 (15.3)	HBLI45103 HBLI40104
		25A	250V AC	80 (24.4) 80 (24.4)	10/3 SJO 10/4 SJO	104.3 (47.3) 113.3 (51.4)	HBLI80103 HBLI80104
	Industrial Reel without end effectors	white reel with white cord black reel with black cord	20A	250V AC	45 (13.7)	12/3 SJO	26.5 (12.0)
White Industrial Reel	with HBL5269C	15A	125V AC	45 (13.7)	14/3 SJO	24.0 (10.9)	HBLI45143C15
	with HBL5369C with HBL2313	20A	125V AC	45 (13.7)	12/3 SJO	26.5 (12.0) 26.5 (12.0)	HBLI45123C20 HBLI45123TL20
White Industrial Reel with Yellow Portable Outlet Box	(1) 15A Duplex Receptacle (2) 15A Duplex Receptacles	15A	125V AC	45 (13.7)	14/3 SJO	24.0 (10.9) 24.0 (10.9)	HBLI45143R15 HBLI45143R215
	GFCI Module and (1) 15A Duplex Receptacle GFCI Module and (2) 15A Duplex Receptacles	15A	125V AC	45 (13.7)	14/3 SJO	24.0 (10.9) 24.0 (10.9)	HBLI45143GF15 HBLI45143GF215
White Industrial Reel with Black Portable Outlet Box	(1) 15A Duplex Receptacle (2) 15A Duplex Receptacles	15A	125V AC	45 (13.7)	14/3 SJO	24.0 (10.9) 24.0 (10.9)	HBLI45143R15M1 HBLI45143R215M1
	GFCI Module and (2) 15A Duplex Receptacles	15A	125V AC	45 (13.7)	14/3 SJO	24.0 (10.9)	HBLI45143GF215M1
White Industrial Reel with Yellow Portable Outlet Box	(1) 20A Duplex Receptacle (2) 20A Duplex Receptacles	20A	125V AC	45 (13.7)	12/3 SJO	26.5 (12.0) 26.5 (12.0)	HBLI45123R20 HBLI45123R220
	GFCI Module and (1) 20A Duplex Receptacle GFCI Module and (2) 20A Duplex Receptacles	20A	125V AC	45 (13.7)	12/3 SJO	26.5 (12.0) 26.5 (12.0)	HBLI45123GF20 HBLI45123GF220
White Industrial Reel with Black Portable Outlet Box	(1) 20A Duplex Receptacle (2) 20A Duplex Receptacles	20A	125V AC	45 (13.7)	12/3 SJO	26.5 (12.0) 26.5 (12.0)	HBLI45123R20M1 HBLI45123R220M1
	GFCI Module and (2) 20A Duplex Receptacles	20A	125V AC	45 (13.7)	12/3 SJO	26.5 (12.0)	HBLI45123GF220M1
White Industrial Reel with Tri-Tap	GFCI Module and Triple Tap Outlet	15A	125V AC	45 (13.7)	12/3 SJO	26.5 (12.0)	HBLI45123GFTT

15A reels are supplied with HBL5266C on the power supply cord. 20A reels are supplied with HBL5366C on the power supply cord. | For shorter cable lengths, modify length indication in catalog number (i.e. HBLIXX); 35ft & 25ft lengths are available. | For yellow reel, add 'Y' suffix to catalog number.



inREACH™ MOUNTING ACCESSORIES

Description	Weight lbs. (kg)	Catalog Number
Mounting bracket	2.5 (1.1)	HBLIMB
Mounting bracket with junction box mount	3.0 (1.4)	HBLIMBJ
Mounting bracket	3.5 (1.6)	HBLIACMB
Mounting bracket with junction box mount	4.0 (1.8)	HBLIACMBJ
340° pivot base	3.5 (1.6)	HBLI340PB
Plenum rated enclosure	30.0 (13.6)	HBLIPRBOX

inREACH™ REPLACEMENT PARTS

Description	Weight lbs. (kg)	Cable Type	Catalog Number
Replacement stop	0.2 (.09)	16AWG	HBLI16BS
		14AWG	HBLI14BS
		12AWG	HBLI12BS
		10AWG	HBLI10BS

Note: consult with manufacturer for compatible cord reel models.

inREACH™ CATEGORY 6 DATA REELS

Description	Cable Length ft. (m)	Cable Type	Weight lbs. (kg)	Catalog Number
White Data Reel with RJ45 Plugs	50 (15.2)	Cat 6	22.9 (10.4)	HBLI50CAT6W
Black Data Reel with RJ45 Plugs	50 (15.2)	Cat 6	22.9 (10.4)	HBLI50CAT6

inREACH™ INDUSTRIAL LIGHTED CORD REELS

Description		Amps	Watts	Voltage	Cable Length ft. (m)	Cable Type	Weight lbs. (kg)	Catalog Number
White Industrial Reel	with LED hand lamp, with end light	0.07A	8+1	120V AC	45 (13.7)	16/3 SJO	22.9 (10.4)	HBLI45I63LED
	with incandescent hand lamp	0.8A	100	125V AC	45 (13.7)	16/3 SJO	22.9 (10.4)	HBLI45I63IN

15A reels are supplied with HBL5266C on the power supply cord. | For shorter cable lengths, modify length indication in catalog number (i.e. HBLIXX); 35ft & 25ft lengths are available. | For yellow reel, add 'Y' suffix to catalog number.

HEAVY DUTY INDUSTRIAL WEATHERPROOF REELS*

Description		Amps	Voltage	Cable Length ft. (m)	Cable Type	Weight lbs. (kg)	Catalog Number
14" yellow weatherproof reel		15A	600V AC	50 (15.2)	14/3 SOW A	55 (24.9)	HBL501431W
16" weatherproof reel	yellow housing white housing	20A	600V AC	50 (15.2)	12/3 SOW A	80 (36.3)	HBL501232W HBL501232WM1
16" yellow weatherproof reel		16A	600V AC	50 (15.2)	12/4 SOW A	86 (39.0)	HBL501242W
16" weatherproof reel	yellow housing white housing	25A	600V AC	50 (15.2)	10/3 SOW A	86 (39.0)	HBL501032W HBL501032WM1
16" yellow weatherproof reel		20A	600V AC	50 (15.2)	10/4 SOW A	92 (41.7)	HBL501042W

Note: *All heavy duty industrial cord reels are supplied with wire leads and 3/4" NPT hub feed. Power supply cable not supplied.

COMMERCIAL CORD REELS

Description		Amps	Watts	Voltage	Cable Length ft. (m)	Cable Type	Weight lbs. (kg)	Catalog Number
Black Reel	with triple tap outlet with wire leads	15A	1,875	125V AC	40 (12.2)	12/3 SJTW	9.0 (4.1)	HBLC40123TT HBLC40123
White Reel with triple tap outlet and white cord		10A	1,250	125V AC	30 (9.1)	16/3 SJT	8.5 (3.9)	HBLC30163TT
Yellow Reel	with Hubbell HBL5969VBLK connector with wire leads	10A	1,250	125V AC	25 (7.6)	16/3 SJT	8.5 (3.9)	HBLC25163C HBLC25163

Note: Commercial reels supplied with 2 ft. power supply cord and molded on straight blade 15A plug.

COMMERCIAL LIGHTED CORD REELS

Description	Amps	Watts (max)	Voltage	Cable Length ft. (m)	Cable Type	Weight lbs. (kg)	Catalog Number
White Reel with LED hand lamp, with flashlight end	0.65	8+1	125V AC	40 (12.2)	18/2 SJTOW	8.2 (3.7)	HBLC40182LED
White Reel with non-metallic incandescent hand lamp and automatic shut off switch	0.6	75	125V AC	25 (7.6)	16/3 SJT	9.0 (4.1)	HBLC25163AIN*
Yellow Reel with metallic incandescent hand lamp with receptacle	13	1,625	125V AC	25 (7.6)	14/3 SJT	9.5 (4.3)	HBLC25143IN

Note: *Automatic shut off switch allows electrical cord reel installation to conform to Article 511 of the NEC* concerning installation of electrical devices in commercial garages, repair facilities and storage locations by positioning the switch above the defined area where hazardous fumes may collect.



CORD & HOSE REELS

INREACH™ MEDICAL CORD REELS

Description	Amps	Volts	Cable Length ft. (m)	Cable Type	Weight lbs. (kg)	Catalog Number
White reel, white portable outlet box, GFCI module, and (2) 20A hospital grade receptacles	20	125V AC	45 (13.7)	12/3 SJ0	34.9 (15.8)	HBLIWC45I23GF220HG
White reel, white portable outlet box, and (2) 20A hospital grade receptacles	20	125V AC	45 (13.7)	12/3 SJ0	34.4 (15.6)	HBLIWC45I23R220HG
White reel and hospital grade connector HBL8319C	20	125V AC	45 (13.7)	12/3 SJ0	33.6 (15.2)	HBLIWC45I23C20HG



AIR/WATER HOSE REELS

Description	Max Pressure (PSI)	Input Hose Fitting (NPTF)	Cable Length ft. (m)	O.D. in. (mm)	Weight lbs. (kg)	Catalog Number
Low pressure 1/4" ID	300	1/4	35 (10.7)	0.51 (13.0)	24 (10.9)	HBLHR2535
			50 (15.2)		26 (11.8)	HBLHR2550
Low pressure 3/8" ID	300	3/8	25 (7.6)	0.65 (16.5)	23 (10.4)	HBLHR3825
			50 (15.2)		36 (16.3)	HBLHR3850
			70 (21.3)		50 (22.7)	HBLHR3870
Low pressure 1/2" ID	300	3/8	35 (10.7)	0.77 (19.6)	38 (17.2)	HBLHR5035
			50 (15.2)		44 (20.0)	HBLHR5050



STATIC DISCHARGE REELS

Description	Cable Length ft. (m)	Cable Type	Weight lbs. (kg)	Catalog Number
Static discharge reel	50 (15.2)	Single 3/32" Steel	12 (5.4)	HBL50SD
Static discharge reel	50 (15.2)	Single 3/32" Steel Nylon Coated	13 (5.9)	HBL50SDN
Static discharge reel	50 (15.2)*	Dual (Y) 3/32" Steel	13 (5.9)	HBL50YSD



Note: *35 ft. (10.6m) + dual 15 ft. (4.5m) for "Y".

Contact Us

Count on Hubbell Wiring Device-Kellems for the most reliable and innovative wiring device product line in North America.



custserv@hubbell.com



(800) 288-6000



Find your local representative at
www.hubbell.com/wiringdevice-kellems

Online Resources

The Hubbell Wiring Device-Kellems website offers fast and convenient information through our online catalog, technical support, videos and more. The website also features a landing page on energy savings. Visit www.hubbell.com/wiringdevice-kellems/en.



A proud member of the Hubbell family.

©2024 Hubbell Incorporated. All rights reserved.

Hubbell and the Hubbell logo are registered trademarks or trademarks of Hubbell Incorporated. All other trademarks are the property of their respective owners.

hubbell.com/wiringdevice-kellems

40 Waterview Drive, Shelton, CT 06484 | 800-288-6000

EP-WDK-CORD-REELS-BR-EN-2023-01293 REV 01/2024