

## EdgeConnect™ Technology

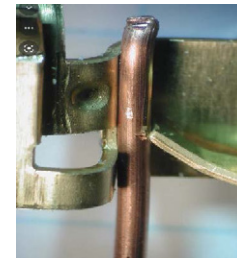
### Is this the same as push wire?

No. Back-stab or push-in termination relies upon a feature formed by the brass contact (see image) and is limited to 15A and 14AWG solid wire.

EdgeConnect termination uses a patented spring clamp to apply continuous pressure and accepts 14-10AWG solid or stranded wire.

### Is this the same as WAGO™ connectors?

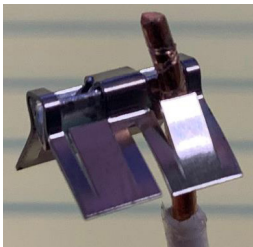
No. WAGO connectors are clamps for splicing wire. EdgeConnect™ technology uses spring terminals within the wiring devices to terminate wires securely.



**Push wire termination**



**EdgeConnect termination**



**WAGO connector**



**EdgeConnect spring clamp ready to use**



**Engaged spring applies continuous pressure**

### How does the termination strengthen over time?

The internal spring grips the wire with constant force while screw terminal terminations may relax over time. Vibration that happens from normal wear and tear causes EdgeConnect spring terminals to tighten even further. As strands relax, the grip gets tighter, which doesn't occur with traditional screw terminals. Read more about the vibration performance [here](#).



### Do EdgeConnect devices accept ten-gauge stranded wire?

Yes! They accept 14, 12, and 10 AWG solid or stranded wire. The product line offers a full range from 15A to 30A up to 480 Volts.

## EdgeConnect™ Technology

### Can you split the circuit?

Yes, you can still split the circuit tab/break-off tab with pliers to control each receptacle separately.

### How much do I need to strip the wire?

There is a gauge on the back of the device showing the optimal strip length (approximately ½ in.).

### Will this fit in traditional wall boxes?

Yes, the added depth from the plungers is less than a quarter of an inch.

### Can EdgeConnect devices use standard wall plates?

Yes, they use the same size wall plates and face coverings as traditional wiring devices.

### Why are the plungers different colors?

The plungers are color coded for easy installation and follow the traditional NEC labeling standard:

- Green – Ground wire
- White – Neutral wire
- Black and/or Red – Hot wires

### Is there exposed metal?

No. Unlike traditional screw terminals, EdgeConnect devices have no exposed conductive material. It keeps you safe and eliminates the need for using electrical tape around the device.

### Are there EdgeConnect GFCI devices?

Not yet. Please subscribe to stay in the know as we expand the product line.

### Can I rewire after plunger is engaged?

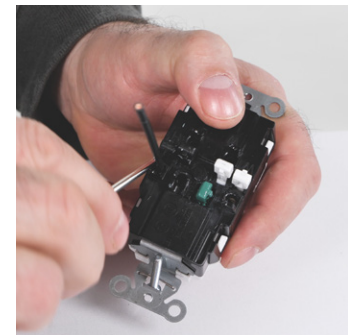
Yes, if you need to perform a change-out or adjust your termination simply use a 3/16" (or smaller) screwdriver and insert it into the top of the plunger. Use the molded fulcrum point as a lever and lift the plunger completely up to remove the wire.

### Where can I find more information about EdgeConnect technology?

Our landing page <https://www.hubbell.com/wiringdevice-kellems/en/edge-connect>



Circuit Tab



A proud member of the Hubbell family.

©2024 Hubbell Incorporated. All rights reserved. Hubbell and the Hubbell logo are registered trademarks or trademarks of Hubbell Incorporated. All other trademarks are the property of their respective owners.

40 Waterview Drive, Shelton, CT 06484  
[hubbell.com/wiringdevice-kellems](https://www.hubbell.com/wiringdevice-kellems) | [custserv@hubbell.com](mailto:custserv@hubbell.com)  
 Phone (800) 288-6000 | Fax (800) 255-1031

EP-WDK-FAQ-EN-01215 | REV 02 2024