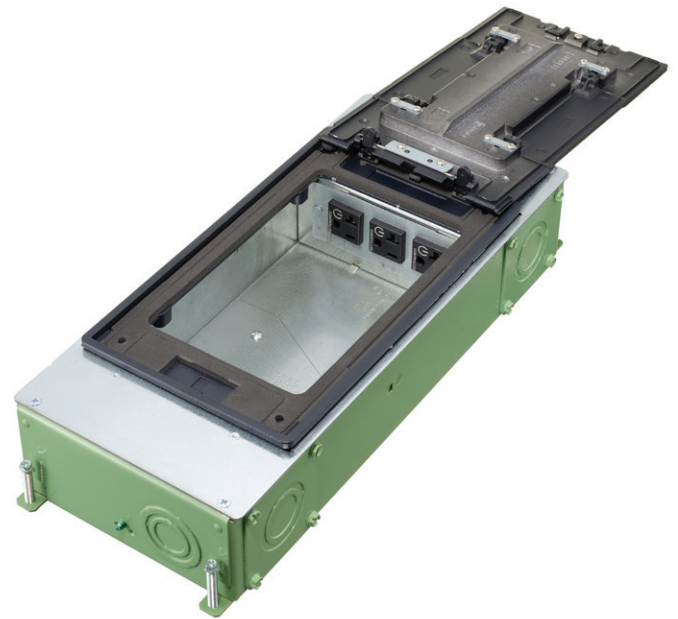


2-Gang Recessed Floor Boxes

The Hubbell SystemOne 2-Gang Recessed Concrete Floor Box offers eight styles, satisfying the requirements of almost any commercial building application. Rectangular or round covers, as well as furniture feed covers, are available in a variety of finishes to blend with any existing or new décor. A parallel-device layout reduces plug interference, maximizing functionality and performance.

Box


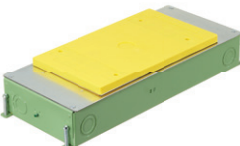


- 14 gauge galvanized sheet metal
- Deeper floor boxes accept field installed metallic 2" threaded hubs and PVC hubs
- Patented PVC conduct adapters can be used on the deep floor boxes—CFBHUB200PVC (2 in. feed-thru) and CFBHUB125PVC (1¼" feed-thru)
- ETERNAL™ series floor boxes have 3.75 inch deep wiring chambers
- Single screw, labor saving, easy mount device plates



Cover

- Rectangular covers- maximum static load of 800 lbs. with 2x safety factor
- Round covers- maximum static load of 1,000 lbs. with 2x safety factor
- 180° cover opening
- Two large cable hideaway egress doors
- Listed to UL 514A and UL scrubwater compliant
- Die cast aluminum cover construction
- Available in round, rectangular and furniture feed styles
- All covers are ADA compliant

2-Gang Floor Boxes

Style	Rectangular Cover		Round Cover	
				
Standard Box	CFB2G30E	CFB2G25E	CFB2G30RE	CFB2G25RE
Corrosion-Resistant (On-grade)	CFB2G30CRE	CFB2G25CRE	CFB2G30RCRE	CFB2G25RCRE
Recommended Pour Depth	3.50" (88.9)	3.00" (76.2)	3.75" (95.3)	3.25" (82.6)
Min. Depth of Pour	3.00" (76.2)	2.50" (63.5)	3.75" (95.3)	3.25" (82.6)



Rectangular Covers

Available finishes



Aluminum Powder Coat Black Powder Coat Brass Powder Coat Bronze Powder Coat Satin Nickel Powder Coat

Finish	Surface Cover Dimensions 11 ¹ / ₁₆ in. x 7 ³ / ₁₆ in.			Flush Cover Dimensions 10 ¹ / ₁₆ in. x 6 ³ / ₁₆ in.		
	Without Insert	With Insert	Furniture Feed (1 in. and 2 in. Plugs)	Without Insert	With Insert	Furniture Feed (1 in. and 2 in. Plugs)
Aluminum Powder Coat	24GCCVRALU	24GCCVRALUC	24GCFFCVRALU	24GTCVRALU	24GTCVRALUC	24GTFFCVRALU
Black Powder Coat	24GCCVRBK	24GCCVRBK	24GCFFCVRBK	24GTCVRBK	24GTCVRBK	24GTFFCVRBK
Brass Powder Coat	24GCCVRBRS	24GCCVRBRSC	24GCFFCVRBRS	24GTCVRBRS	24GTCVRBRSC	24GTFFCVRBRS
Bronze Powder Coat	24GCCVRBRZ	24GCCVRBRZC	24GCFFCVRBRZ	24GTCVRBRZ	24GTCVRBRZC	24GTFFCVRBRZ
Satin Nickel Powder Coat	24GCCVRNK	24GCCVRNK	24GCFFCVRNK	24GTCVRNK	24GTCVRNK	24GTFFCVRNK



6 Inch Round Covers

Available finishes



Brushed Aluminum Black Powder Coat Brass Plated Bronze Plated Gray Powder Coat Satin Nickel Plated

Finish	Flush Surface	Furniture Feed (¾ in. and 2 in. Plugs)
Brushed Aluminum	CFBS1R6CVRALU	CFBS1R6FFCVRALU
Black Powder Coat	CFBS1R6CVRBLK	CFBS1R6FFCVRBLK
Brass Plated	CFBS1R6CVRBRS	CFBS1R6FFCVRBRS
Bronze Plated	CFBS1R6CVRBRZ	CFBS1R6FFCVRBRZ
Gray Powder Coat	CFBS1R6CVRGRY	CFBS1R6FFCVRGRY
Satin Nickel Plated	CFBS1R6CVRNKL	CFBS1R6FFCVRNKL



Furniture feed covers ship with low voltage dividing system.

Plates for use in SystemOne 2-Gang floor boxes

Cat. No.	Plate Style	Cat. No.	Plate Style
FBMPREC	(1) Decorater opening	FBMPDUP	(1) Duplex opening
FBMP139	(1) Simplex opening 1.40 in. diameter	FBMP156	(1) Twist-Lock® opening 1.60 in. diameter
FBMP6DJ	(1) Hubbell keystone jack openings and (4) jack KOs with label field	FBMP6KS	(1) Opening with Hubbell 6-Port frame for keystone jacks
FBMP15IM	(1) 1.5U Hubbell iStation opening	FBMP2IM	(2) 1U Hubbell iStation openings
FBMPBNK	1-gang blank plate	FBMPFT	Cable feed through with bushing
FBMPAAP	(4) Extron® AAP openings	FBMPMAAP	(2) Extron® MAAP openings
FBMPTRAC	(1) opening for Tracjack® or Series II®	FBMPSIEMONCT	Siemon CT Series

Extron® is a registered trademark of Extron Electronics. TracJack®, Series II® and Ortronics® are registered trademarks of Ortronics/Legrand.

Pre-Wired Device Plates for use with 2-Gang floor boxes

Description	Type	15A	20A
Duplex, gray	Standard Tamper-Resistant	PWFBMPCR15GRY PWFBMPCR15GRYTR	PWFBMPCR20GRY PWFBMPCR20GRYTR
Decorator, gray	Standard Tamper-Resistant	PWFBMPDR15GRY PWFBMPDR15GRYTR	PWFBMPDR20GRY PWFBMPDR20GRYTR
2-Cubes, single circuit	Standard Marked Controlled	-	PWFBMP2R* PWFBMP2RC*
3-Cubes, single circuit	Standard Marked Controlled	-	PWFBMP3R* PWFBMP3RC*

Note: *Includes isolated ground sticker



A proud member of the Hubbell family.