

# 4-Gang Round Floor Boxes

With an 8 in. diameter, the Hubbell SystemOne 4-Gang Round Recessed Floor Box is ideal for use in raised access floors with pre-cut tile or wood floor coverings. With a variety of finish selections, the round covers blend in with the flooring and overall design of the building. Deep, 2 ¾ in. wiring compartments are ready to accommodate today's most advanced, high-performance power, data and AV needs to supply reliable connectivity.

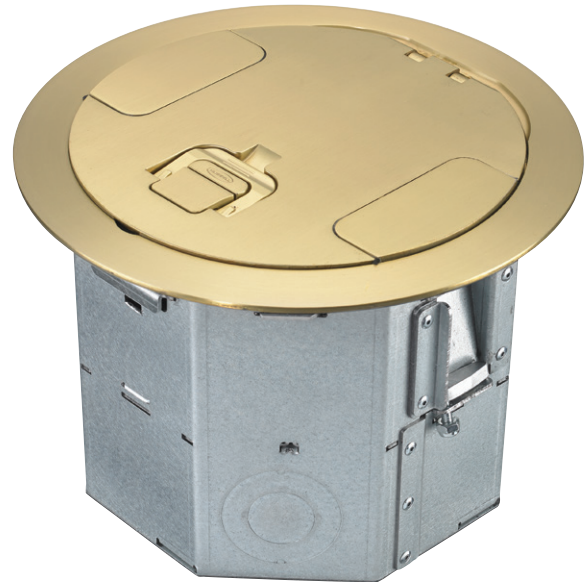
## Features and Benefits

### Round Box

- For use in Raised Access or Wood Floors
- Fits in 8 in. diameter air diffuser holes
- 16 gauge galvanized sheet metal construction
- 2 in. knock-out on the bottom allows for large amounts of data and/or AV devices
- Minimum Depth from Top of Floor Tile 6.47" (164.3)
- Mounts in tiles ¾ in. to 2 in. thick
- Plenum rated box assemblies

### Cover

- 180° cover opening
- Two large cable egress doors
- Listed to UL 514A and UL scrubwater compliant
- Die cast aluminum cover construction
- Round covers- maximum static load of 1,000 lbs. with 2x safety factor
- All covers are ADA compliant



**RAFB4BASE**



**RAFB4BRS**

Cover Material	Cover Finish	Catalog Number
Sheet Metal	Natural (Temporary)	<b>RAFB4BASE</b>
Cast Aluminum	Brushed Aluminum	<b>RAFB4ALU</b>
Cast Aluminum	Black Powder Coat	<b>RAFB4BLK</b>
Cast Aluminum	Brass Plated	<b>RAFB4BRS</b>
Cast Aluminum	Bronze Plated	<b>RAFB4BRZ</b>
Cast Aluminum	Gray Powder Coat	<b>RAFB4GRY</b>
Cast Aluminum	Satin Nickel Plated	<b>RAFB4NKL</b>



## 8 Inch Round Covers

Round covers are suitable for use with all floor types

Plate Style	Catalog Number
Brushed Aluminum	<b>CFBS1R8CVRALU</b>
Black Powder Coat	<b>CFBS1R8CVRBLK</b>
Brass Plated	<b>CFBS1R8CVRBRS</b>
Bronze Plated	<b>CFBS1R8CVRBRZ</b>
Gray Powder Coat	<b>CFBS1R8CVRGRY</b>
Satin Nickel Plated	<b>CFBS1R8CVRNKL</b>

### Available finishes



Brushed Aluminum



Black Powder Coat



Brass Plated



Bronze Plated



Gray Powder Coat



Satin Nickel Plated

### RAFB4 Series - Plates

Cat. No.	Plate Style	Cat. No.	Plate Style
<b>RAFB4SPDECO</b>	(1) Decorater opening	<b>RAFB4SPDUPLEX</b>	(1) Duplex opening
<b>RAFB4SPTL14</b>	(1) Simplex opening 1.40 in. diameter	<b>RAFB4SPTL16</b>	(1) Twist-Lock® opening 1.60 in. diameter
<b>RAFB4SP3UIS</b>	(1) Hubbell iStation Opening for 3 Units	<b>RAFB4SP3MAAP</b>	(3) Extron® MAAP Modules
<b>RAFB4SP2AAP</b>	(2) Extron® AAP Modules	<b>RAFB4SPBLANK</b>	Blank
<b>RAFB4SPORT</b>	Opening to Accept Bezels for Ortronics TracJack®		

Extron® is a registered trademark of Extron Electronics. TracJack®, Series II® and Ortronics® are registered trademarks of Ortronics/Legrand.



**RAFB4NKL**  
with Devices



A proud member of the Hubbell family.

hubbell.com/wiringdevice-kellems | 40 Waterview Drive,  
Shelton, CT 06484 | 800-288-6000

©2023 Hubbell Incorporated. All rights reserved.  
Hubbell and the Hubbell logo are registered trademarks or  
trademarks of Hubbell Incorporated.  
All other trademarks are the property of their respective owners.

EP-WDK-SF-EN-01476 10/23