

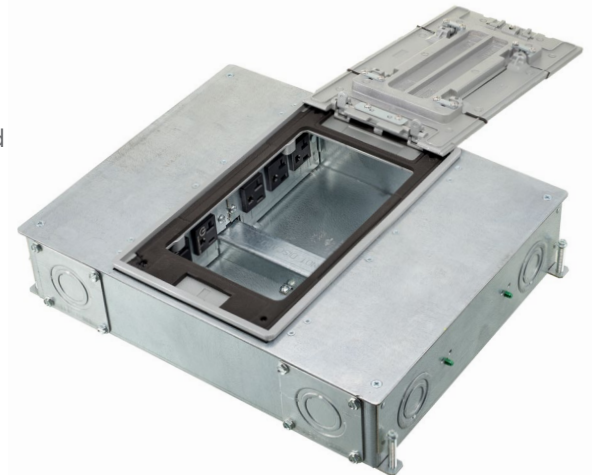
4-Gang Recessed Floor Boxes

4-Gang Recessed

Hubbell's SystemOne 4-Gang Recessed Concrete Floor Box is available with rectangular or round covers. Ten different styles make it possible to meet the electrical requirements of most commercial projects, new construction or renovation. The parallel device layout maximizes functionality which can be limited when devices are mounted 90° from one another.

Box


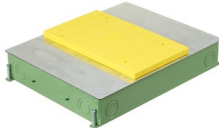


- 3.75" deep wiring device chambers
- 14 gauge galvanized sheet metal
- Optional fusion-bonded, green epoxy paint for on-grade use
- 3 in. and deeper versions accept field installed metallic 2" threaded hubs
- Patented PVC conduit adapters can be used on 3 in. and deeper metal and PVC floor boxes—**CFBHUB200PVC** (2 in. feed-thru) and **CFBHUB125PVC** (1¼" feed-thru)
- Pre-pour and post-pour adjustment
- Single screw, labor saving, easy mount device plates
- Exclusive 4-Gang PVC concrete floor boxes can be used for slab on grade and second floor and above concrete floors



Cover

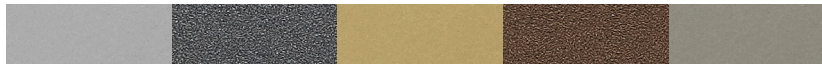
- Rectangular covers- maximum static load of 800 lbs. with 2x safety factor
- Round covers- maximum static load of 1,000 lbs. with 2x safety factor
- Available in round and rectangular, recessed and furniture feed styles
- Recessed covers open a full 180°
- Large hide-away cable egress doors
- Listed to UL 514A and UL Scrubwater compliant
- Die cast aluminum cover construction
- All covers are ADA compliant

4-Gang Floor Boxes

Style	Rectangular Cover		Round Cover	
				
Standard Box	CFB4G30E	CFB4G25E	CFB4G30RE	CFB4G25RE
Corrosion-Resistant (On-grade)	CFB4G30CRE	CFB4G25CRE	CFB4G30RCRE	CFB4G25RCRE
Recommended Pour Depth	3.50" (88.9)	3.00" (76.2)	3.75" (95.3)	3.25" (82.6)
Min. Depth of Pour	3.00" (76.2)	2.50" (63.5)	3.75" (95.3)	3.25" (82.6)



Rectangular Covers

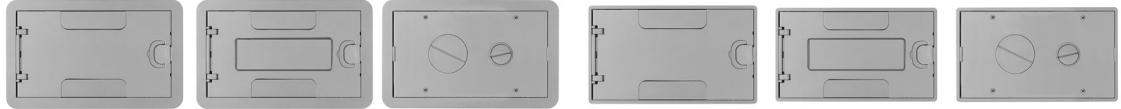


Available finishes

Aluminum Powder Coat Black Powder Coat Brass Powder Coat Bronze Powder Coat Satin Nickel Powder Coat

Finish	Surface Cover Dimensions 11 ¹ / ₁₆ in. x 7 ³ / ₁₆ in.			Flush Cover Dimensions 10 ¹ / ₁₆ in. x 6 ³ / ₁₆ in.		
	Without Insert	With Insert	Furniture Feed (1 in. and 2 in. Plugs)	Without Insert	With Insert	Furniture Feed (1 in. and 2 in. Plugs)
Aluminum Powder Coat	24GCCVRALU	24GCCVRALUC	24GCFFCVRALU	24GTCVRALU	24GTCVRALUC	24GTFFCVRALU
Black Powder Coat	24GCCVRBK	24GCCVRBKC	24GCFFCVRBK	24GTCVRBK	24GTCVRBKC	24GTFFCVRBK
Brass Powder Coat	24GCCVRBRS	24GCCVRBRSC	24GCFFCVRBRS	24GTCVRBRS	24GTCVRBRSC	24GTFFCVRBRS
Bronze Powder Coat	24GCCVRBRZ	24GCCVRBRZC	24GCFFCVRBRZ	24GTCVRBRZ	24GTCVRBRZC	24GTFFCVRBRZ
Satin Nickel Powder Coat	24GCCVRNK	24GCCVRNKC	24GCFFCVRNK	24GTCVRNK	24GTCVRNKC	24GTFFCVRNK

Furniture feed covers ship with low voltage dividing system.



8 Inch Round Covers



Available finishes

Brushed Aluminum Black Powder Coat Brass Plated Bronze Plated Gray Powder Coat Satin Nickel Plated

Finish	Flush Surface	Furniture Feed (¾ in. and 2 in. Plugs)
Brushed Aluminum	CFBS1R8CVRALU	CFBS1R8FFCVRALU*
Black Powder Coat	CFBS1R8CVRBLK	CFBS1R8FFCVRBLK*
Brass Plated	CFBS1R8CVRBRS	CFBS1R8FFCVRBRS*
Bronze Plated	CFBS1R8CVRBRZ	CFBS1R8FFCVRBRZ*
Gray Powder Coat	CFBS1R8CVRGRY	CFBS1R8FFCVRGRY*
Satin Nickel Plated	CFBS1R8CVRNKL	CFBS1R8FFCVRNKL*



* For 4-gang box dual service, **CFBS1R8FF4GDIVKIT** required with Furniture Feed covers. Purchased separately.

Plates for use in SystemOne 4-Gang floor boxes

Cat. No.	Plate Style	Cat. No.	Plate Style
FBMPREC	(1) Decorator opening	FBMPDUP	(1) Duplex opening
FBMP139	(1) Simplex opening 1.40 in. diameter	FBMP156	(1) Twist-Lock® opening 1.60 in. diameter
FBMP6DJ	(1) Hubbell keystone jack openings and (4) jack KOs with label field	FBMP6KS	(1) Opening with Hubbell 6-Port frame for keystone jacks
FBMP15IM	(1) 1.5U Hubbell iStation opening	FBMP2IM	(2) 1U Hubbell iStation openings
FBMPBNK	1-gang blank plate	FBMPFT	Cable feed through with bushing
FBMPAAP	(4) Extron® AAP openings	FBMPMAAP	(2) Extron® MAAP openings
FBMPTRAC	(1) opening for Tracjack® or Series II®	FBMPSIEMONCT	Siemon CT Series

Extron® is a registered trademark of Extron Electronics. TracJack®, Series II® and Ortronics® are registered trademarks of Ortronics/Legrand.

Pre-Wired Device Plates for use with 4-Gang floor boxes

Description	Type	15A	20A
Duplex, gray	Standard Tamper-Resistant	PWFBMPCR15GRY PWFBMPCR15GRYTR	PWFBMPCR20GRY PWFBMPCR20GRYTR
Decorator, gray	Standard Tamper-Resistant	PWFBMPDR15GRY PWFBMPDR15GRYTR	PWFBMPDR20GRY PWFBMPDR20GRYTR
2-Cubes, single circuit	Standard Marked Controlled	-	PWFBMP2R* PWFBMP2RC*
3-Cubes, single circuit	Standard Marked Controlled	-	PWFBMP3R* PWFBMP3RC*

Note: *Includes isolated ground sticker



A proud member of the Hubbell family.