

HUBBELL SYSTEM ONE FLOOR BOX

10-Gang Rectangular Floor Boxes

Designed to serve high-capacity, multi-service applications, the 10-gang floor box supports installation with an array of Hubbell power, data and AV devices. Third-party mounting plates are available for other manufacturers' devices, including Extron®, Crestron® and FSR®. A 5 ½ in. box depth offers great capacity for connectivity, with the ability accept 2 in. conduit to meet growing AV and data needs. The rectangular covers come in a variety of colors and finishes to enhance any building's design.

Features and Benefits

Rectangular Box

- For Use in Raised Access or Wood Floors
- 16 gauge galvanized sheet metal
- Many boxes allow for 2 in. conduits
- Mounts in tiles ¾ in. to 2 in. thick
- Single screw, labor saving, easy mount device plates
- Plenum rated box assemblies

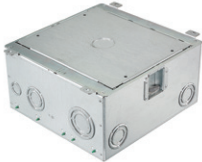
Cover

- 180° cover opening
- Two large cable egress doors
- Covers- maximum static load of 1,500 lbs with 2x safety factor
- Listed to UL 514A and UL scrubwater compliant
- Die cast aluminum cover construction
- Available in round, rectangular and furniture feed styles
- All covers are ADA compliant



8/10-Gang Floor Boxes

| | |
|-----------------------------------|--------------------|
| Style | Rectangular Cover |
| Box Type | |
| Standard | AFB10G55 |
| Chicago (No Knockouts) | AFB10G55CHI |
| Min. Depth from Top of Floor Tile | 5.95" (151.1) |



Rectangular Covers

(for use with raised access tiles and wood floors)

| Finish | Surface Style Cover | |
|--------------------------|---------------------|----------------------|
| | Without Insert | With Insert |
| Aluminum Powder Coat | 10GAFBCVRLU | 10GAFBCVRLUC |
| Black Powder Coat | 10GAFBCVRBK | 10GAFBCVRBKC |
| Brass Powder Coat | 10GAFBCVRBRS | 10GAFBCVRBRSC |
| Bronze Powder Coat | 10GAFBCVRBRZ | 10GAFBCVRBRZC |
| Satin Nickel Powder Coat | 10GAFBCVRNK | 10GAFBCVRNKC |



Aluminum Powder Coat



Black Powder Coat



Bronze Powder Coat



Brass Powder Coat

Plates for Use in SystemOne 8*/10-Gang Floor Boxes

| Cat. No. | Plate Style | | Cat. No. | Plate Style | |
|-----------------------|---|--|----------------------|---|--|
| FB10MPREC | (1) Decorater opening | | FB10MPDUP | (1) Duplex opening | |
| FB10MPBNK | Blank | | FB10MPKEY | Decorater Opening Plate Including Hubbell ISF6GY | |
| FB10MPTRAC | (2) Openings to Accommodate (6) Ortronics TracJack® | | FB10MP2A | (2) Decorater | |
| FB10MP2E | (2) Duplex opening | | FB10MPMAAP | (4) Extron® MAAP Modules | |
| FB10MPAAP | (4) Extron® MAAP Modules | | FB10MP2B | For (6) 1U Hubbell iStation Modules | |
| FB10MPFT | Cable Feed Through with Bushing | | FB10TLA | (1) Twist-Lock® Opening 1.60 in. Dia. (Uses 2-Gangs) | |
| FB10TLX | (1) Simplex Opening 1.40 in. Dia. (Uses 2-Gangs) | | FB10TLB | (2) Twist-Lock® Opening 1.60 in. Dia. (Uses 3-Gangs) | |
| FB10TLY | 2) Simplex Opening 1.40 in. Dia. (Uses 3-Gangs) | | FB10MP3GAPP | (1) Opening for Appliance Receptacle (Uses 3-Gangs) | |
| FB10TLC | (3) Twist-Lock® Opening 1.60 in. Dia. (Uses 5-Gangs) | | FB10TLZ | (3) Simplex Opening 1.40 in. Dia. (Uses 5-Gangs) | |
| FB10MPNEMA2XG* | (2) 2-Gang. Meets NEMA Spacing. Ideal for Crestron® DM -TX Product and Power (Uses 5-Gangs) | | FB10MPNEMA4G* | (4) Single Service Openings Utilizing NEMA Wallplate (Uses 5-Gangs) | |

Note: *Use with FB10MPNEMA2XG and/or FB10MPNEMA4G for 8-gang configuration.

Extron® is a registered trademark of Extron Electronics. Crestron® is a registered trademark of Crestron Electronics, Inc. TracJack®, Series II® and Ortronics® are registered trademarks of Ortronics/Legrand.

Pre-Wired Devices Plates

| Description | Type | 15A | 20A |
|-----------------|------------------------------|--|--|
| Duplex, gray | Standard Tamper-Resistant | PWFB10MPPCR15GRY PWFB10MPPCR15GRYTR | PWFB10MPPCR20GRY PWFB10MPPCR20GRYTR |
| Decorater, gray | Standard Tamper-Resistant | PWFB10MPDR15GRY PWFB10MPDR15GRYTR | PWFB10MPDR20GRY PWFB10MPDR20GRYTR |



A proud member of the Hubbell family.

hubbell.com/wiringdevice-kellems | 40 Waterview Drive,
Shelton, CT 06484 | 800-288-6000

©2023 Hubbell Incorporated. All rights reserved.
Hubbell and the Hubbell logo are registered trademarks or
trademarks of Hubbell Incorporated.
All other trademarks are the property of their respective owners.

EP-WDK-SF-EN-01479 10/23