

# *inREACH™ Cord Reels: The Power Delivery Solution for Educational Facilities*

## *Industry First*

*Hubbell inREACH™ Cord Reels meet NEC® Code 406.12 for tamper-resistant receptacles in K-12 schools, colleges, and universities*

Hubbell's inREACH™ Cord Reels are designed specifically for educational facilities with top-of-the-line safety features.

The cord reels are listed to UL 355 and CSA C22.2 No. 308 with a durable, low-profile cast aluminum construction. An impact-resistant portable outlet box houses two tamper-resistant duplex receptacles and is secured with a strain relief cord grip which can withstand 100lbs of pullout force up to 5 minutes. To provide ground fault protection and local point of reset, these reels incorporate a Class A, inline GFCI module listed to UL 943, Section 6.7.2.1.



## **CORD REEL FEATURES**

- Durable, corrosion resistant cast aluminum construction
- White powder coat finish
- Tamper resistant receptacles comply with NEC 406.12
- Inline GFCI module listed to UL 943, Section 6.7.2.1 for local reset
- Adjustable ball stop can set the desired cord length
- 12AWG fully rated at 20 amps
- Available in 25ft, 35ft and 45ft lengths

## **inREACH™ PLENUM RATED ENCLOSURE**

To allow installers to securely mount a cord reel in drop ceilings while isolating it from the plenum space, Hubbell offers its new inREACH Plenum Rated Enclosure. Its UL 2416 listing ensures that the enclosure complies with NEC 300.22 plenum requirements.



The plenum enclosure is easily secured to the building structure using threaded rods.



Install almost any Hubbell inREACH cord reel using factory provided hardware and included 4 in. sq. electrical box.



Greatly improve aesthetics while maintaining code compliance.

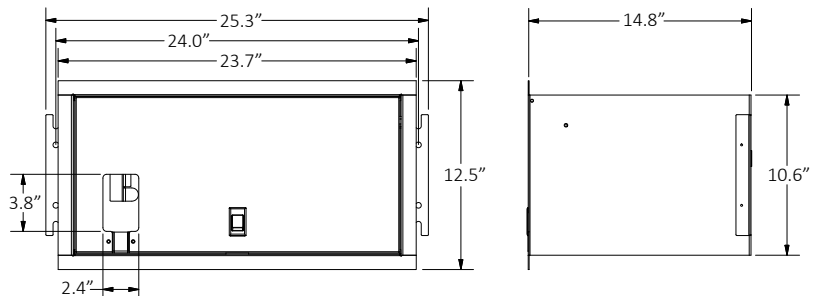
# inREACH™ Plenum Rated Enclosure



Hubbell's inREACH™ plenum rated enclosure is the first of its kind, allowing customers to securely mount cord reels in drop ceilings, while isolating it from the plenum space. These enclosures are listed to UL2416, making them compliant with plenum requirements per the NEC.

## PLENUM RATED BOX FEATURES & DIMENSIONS

- Steel enclosure, white powder coat surface finish
- UL 2416 listed; CAN/CSA C22.2 No 60950-1-07, compliant with plenum requirements per NEC300.22
- Accepts most Hubbell InREACH industrial cord reels
- 75 lbs. load capacity
- 4 in. square electrical box included
- Pre-punched knockout hole



## ORDERING INFORMATION

### inREACH™ Industrial Cord Reels

Description	Amps	Voltage	Cable Length ft (m)	Cable Type	Weight lbs. (kg)	Catalog Number
White industrial reel, black portable outlet box, GFCI module and (2) 20A duplex receptacles	20A	125V AC	45 (13.7)	12/3 SJO	26.5 (12.0)	HBLI45123GF220M1

For additional cord reel configurations, please view our online resources below, or contact your local Hubbell representative.

### Plenum Rated Enclosure for inREACH™ Cord Reels

Description	Weight lbs. (kg)	Catalog Number
Plenum rated enclosure	30.0 (13.6)	HBLIPRBOX



## ONLINE RESOURCES

The Hubbell Wiring Device-Kellems website offers fast and convenient information through our online catalog, technical support, videos and more.

Visit [www.hubbell.com/wiringdevice-kellems](http://www.hubbell.com/wiringdevice-kellems).



Full Line Catalog



Cord Reels



inREACH Cord Reel  
Drop Ceiling Enclosure Video

## CONTACT US

Count on Hubbell Wiring Device-Kellems for the most reliable and innovative wiring device product line in North America.

✉ [custserv@hubbell.com](mailto:custserv@hubbell.com)

☎ (800) 288-6000

📍 Find your local representative at  
[www.hubbell.com/wiringdevice-kellems](http://www.hubbell.com/wiringdevice-kellems)