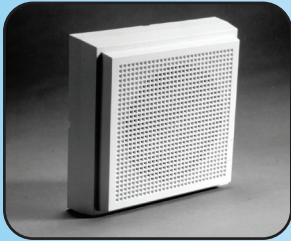


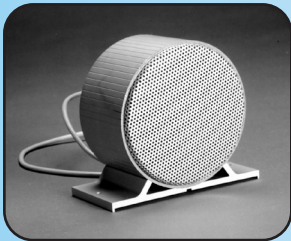
GAI-Tronics loudspeakers are designed especially for voice broadcasts, providing clear and efficient communications in the speech frequency range.

Our cone speaker assemblies feature quality components selected for reliable performance in office, control room - virtually any light industrial application.



MODEL B406-8-W

- ABS construction
- Easy installation with integral mounting plate
- Quick spring clamp wire terminations



MODEL CAR4-8

- Bi-directional speaker is ideal for hallways
- Easy wall mounting
- Anodized aluminum construction
- Furnished with cable tail

The models shown here represent a portion of the variety of models available.

Please contact your local GAI-Tronics Sales Representative for more information.



MODEL 1204-003

- Flush ceiling speaker with back box
- White epoxy, painted aluminum baffle with rim mounting holes to simplify installation
- Supplied with remote volume control and wall plate
- 12-inch diameter light industrial cone speaker



MODEL B650-8

- Flush ceiling speaker with enclosed rear chamber
- ABS construction
- Easy installation of back box with three mounting hooks
- Quick "spring clip" wire terminations

SPEAKER PLACEMENT

Because effective communications rely on correct speaker placement, remember the following general guidelines when considering system layout and speaker placement:

- If there is a main “noise source”, place the speaker as close to it as possible. This way, speaker volume and noise source volume will attenuate at the same rate.
- Speakers should be placed two to six feet above head level.
- Speakers should not face each other, unless they are more than 50 feet apart.

TRANSFORMER APPLICATIONS

In central amplifier systems utilizing 70 volt or 100 lines, speakers will require line matching transformers. The B406-8-W, B650-8 and CAR4-8 can be ordered with transformers for use in 70 volt systems or 100 volt systems.

The 1204-003 can be fitted with a 15 watt line matching transformer. Please order part number 56133-007.

REMOTE SPEAKER VOLUME CONTROL

Model number 12506-001 is a remote volume control kit which can be used with the B406-8-W, 1204-003, CAR4-8, and B650-8 units. The kit contains a stainless steel panel and L-pad.

PART NUMBER	SPL 1 w@ 1 Mtr.	EFFICIENT FREQUENCY RANGE	POWER	IMPEDANCE	DIMENSIONS inches (mm)	SHIPPING WEIGHT
**B406-8-W	97 dB	320 - 11,500 Hz	6W	8 Ohms	8.3 H X 8.3 W X 2.6 D (210) X (210) X (66)	2.7 lb. (1.2kg)
****CAR4-8	96 dB	350 - 10,900 Hz	4W	8 Ohms	6 H X 7 W X 3.5 D (152 X (178) X (90)	3.3 lb. (1.5kg)
*****B650-8	93 dB	210 - 8100 Hz	6W	8 Ohms	9.1 Dia. X 4.7 D* (232) X (120)	3.3 lb. (1.5kg)
1204-003	97 dB	210 - 12,500 Hz	15W	8 Ohms	16.6 Dia. X 10.0” D* (210) X (256)	10.0 lb. (4.5kg)

*Distance behind mounting surface

** B406T-100W Includes 100V transformer
B406T-70W Includes 70V transformer

**** CAR4T-100 Includes 100V transformer
CAR4T-70 Includes 70V transformer

***** B650T-100 Includes 100V transformer
B650T-70 Includes 70V transformer