

Project Name _____ PO # _____

Contact Name _____ Company Name _____

Contact Phone Number _____ Shipping Address _____

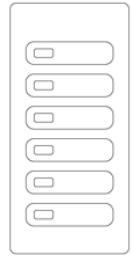
City _____ State _____ Zip Code _____

NOTES

- Custom Text (-CT) is an option to allow customers to create unique text to apply on a button cap based on unique and personalized requirements
- CT option is based on [custom text](#) not currently available from our preset list
- CT options are unique and will require longer lead times
- 8 Character limit. Text requests over 8 characters will be required to be abbreviated Spaces count towards a character.
- Text will be 5pt., Arial Narrow, all caps
- Light pipes are always on the left
- **Red and Black caps will be provided with white text.**
- **White, Light Almond, Gray and Ivory caps will be provided with black text.**
- **Special characters may be used, however will require additional internal efforts to define to the factory. (See special notes field on the bottom of this page.)**
- **Pilot light functionality is not supported with Off or Raise/Lower type buttons.**



1-4 Button w/ Light Pipe



6 Button w/ Light Pipe

HOW TO ORDER

1. Complete this Custom Text form including your purchase order number and contact information.
2. Each -CT, custom button cap request requires a completed Custom Text Order Form. Text will be printed exactly as written, so please write in all capital letters.
3. Submit a PO and the form on Oasis. For questions about your order, please contact your Customer Service Rep.

***Order forms provided to customer service must be in the original editable PDF format. They may NOT be scanned, handwritten, faxed, or photocopied.**

Ordering part numbers (NX)

CATALOG #

Model	Device	Size	Light Pipe	Color	Custom Text
BTD	N				CT -

EXAMPLE: BTD-N-L-N-GY-CT-HUBBELL

*Notes:

- Light Pipe text starts at the light pipe and progresses right
- Non-light pipe text is centered on the button cap

*All Custom Text (CT) must be written in **all caps**

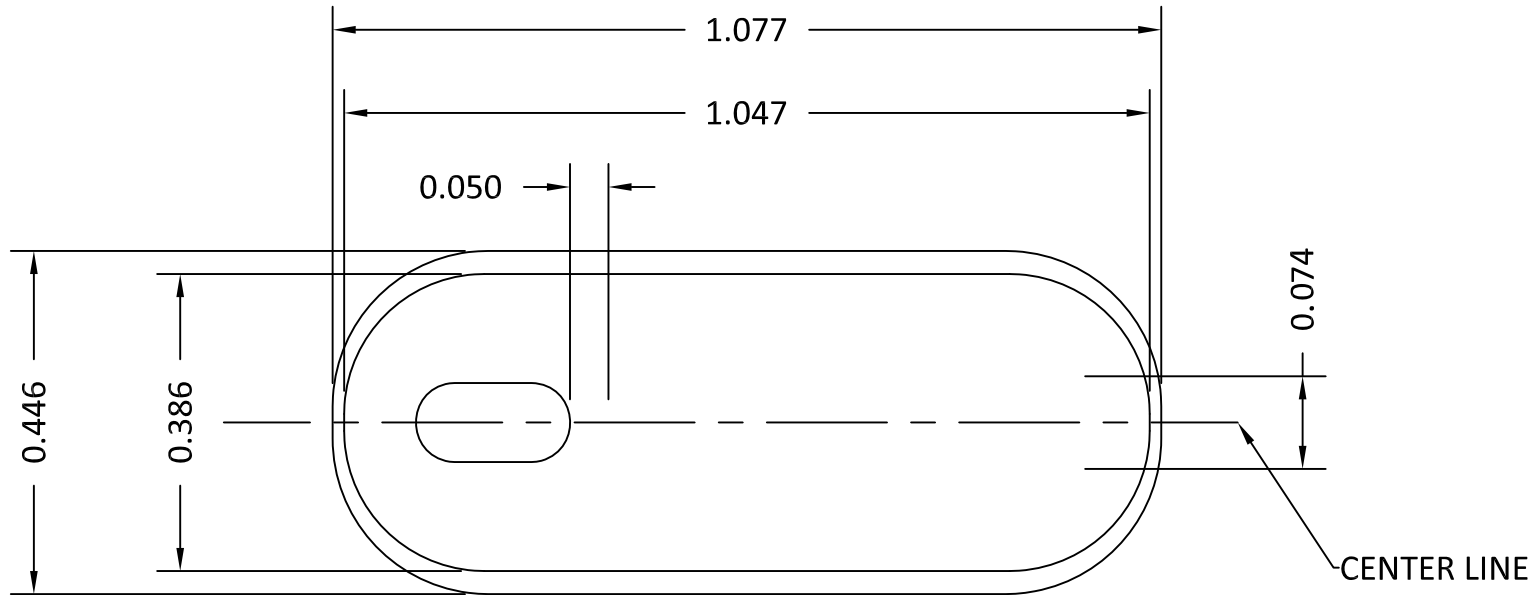
CUSTOMER NOTES:

CUSTOMER APPROVAL: I hereby agree that the spelling, capitalization and arrangement of the text shown on the attached Custom Text order is correct and release for manufacturing without further review.

Signature _____ Date _____

BTD-N-L-P-(x)-CT-

*All Custom Text (CT) must be written in **all caps**



* (x) INDICATES THE WALL STATION DEVICE NAME

*PRINTED PART NO.	BUTTON PART NO.	BUTTON COLOR	IMAGE COLOR
BTD-(x)-L-P-WH-	30-00583-01	WHITE	BLACK
BTD-(x)-L-P-GY-	30-00583-03	GRAY	BLACK
BTD-(x)-L-P-LA-	30-00583-04	LIGHT ALMOND	BLACK
BTD-(x)-L-P-BK-	30-00583-05	BLACK	WHITE
BTD-(x)-L-P-IV-	30-00583-07	IVORY	BLACK
BTD-(x)-L-P-RD-	30-00583-10	RED	WHITE

NOTES:

- HUBBELL CONTROL SOLUTIONS TO PROVIDE IMAGE SOFTWARE FILE (*.ai OR *.EPS).
- LIGHT PIPE IS TO ALWAYS BE ON THE LEFT OF TEXT ORIENTATION
- POSITION IMAGE ON BUTTON AS SHOWN -CENTERED TEXT SHOWN AS REF.
- IMAGE TO BE FREE OF SMEARS, SMUDGES AND FOREIGN MATERIALS.

HUBBELL
Control Solutions

TITLE

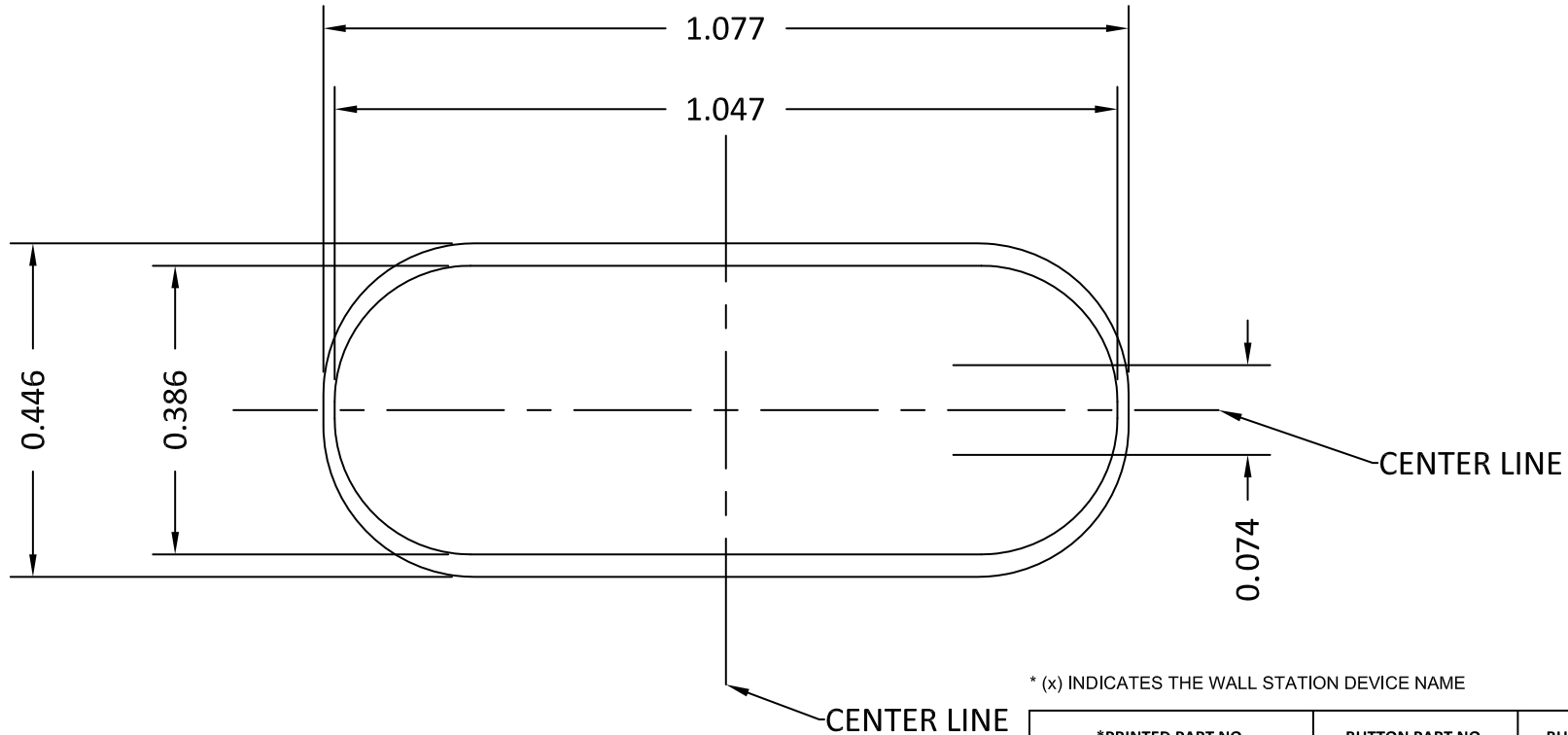
BUTTON LABELED W/LIGHTPIPE

SIZE A	DWG NO 30-00583-xx_	REV A
-----------	------------------------	----------

SCALE: | WEIGHT: | SHEET 1 OF 1

BTD-N-L-N-(x)-CT-

*All Custom Text (CT) must be written in **all caps**



* (x) INDICATES THE WALL STATION DEVICE NAME

*PRINTED PART NO.	BUTTON PART NO.	BUTTON COLOR	IMAGE COLOR
BTD-(x)-L-N-WH-	30-00419-01	WHITE	BLACK
BTD-(x)-L-N-GY-	30-00419-03	GRAY	BLACK
BTD-(x)-L-N-LA-	30-00419-04	LIGHT ALMOND	BLACK
BTD-(x)-L-N-BK-	30-00419-05	BLACK	WHITE
BTD-(x)-L-N-IV-	30-00419-07	IVORY	BLACK
BTD-(x)-L-N-RD-	30-00419-10	RED	WHITE

NOTES:

- HUBBELL CONTROL SOLUTIONS TO PROVIDE IMAGE SOFTWARE FILE (*.ai OR *.EPS).
- POSITION IMAGE ON BUTTON AS SHOWN -CENTERED TEXT SHOWN AS REF.
- IMAGE TO BE FREE OF SMEARS, SMUDGES AND FOREIGN MATERIALS.

HUBBELL
Control Solutions

TITLE

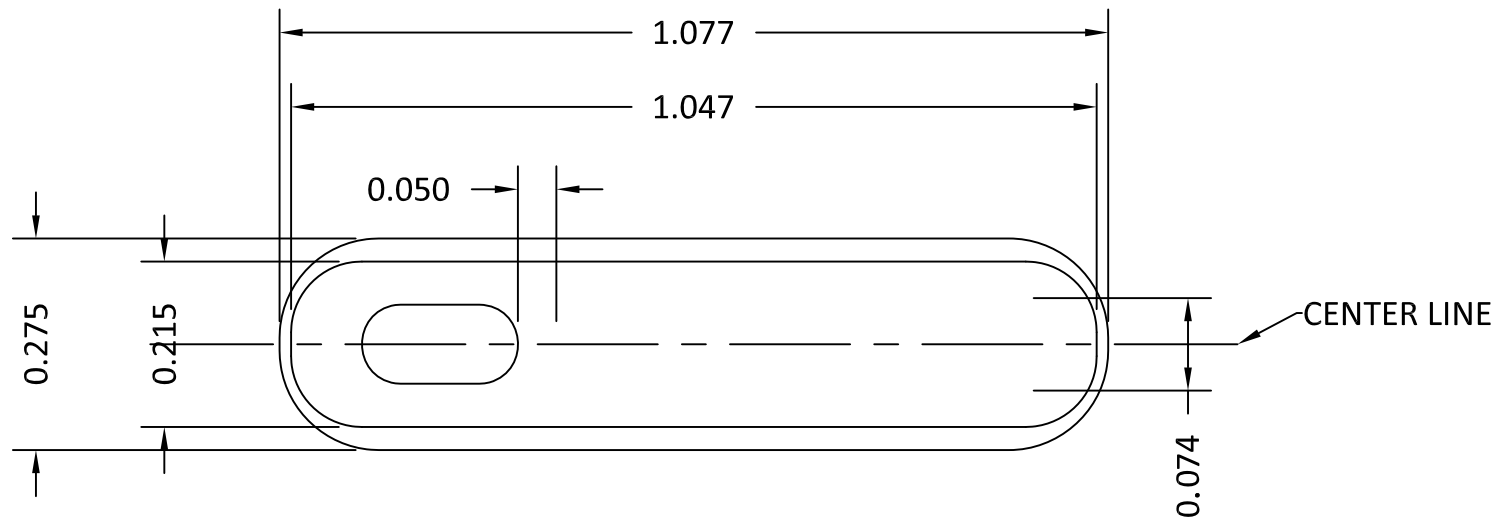
BUTTON LABELED

SIZE A	DWG NO 30-00419-xx_	REV A
-----------	------------------------	----------

SCALE: | WEIGHT: | SHEET 1 OF 1

BTD-N-S-P-(x)-CT-

*All Custom Text (CT) must be written in **all caps**



* (x) INDICATES THE WALL STATION DEVICE NAME

*PRINTED PART NO.	BUTTON PART NO.	BUTTON COLOR	IMAGE COLOR
BTD-(x)-S-P-WH-	30-00582-01	WHITE	BLACK
BTD-(x)-S-P-GY-	30-00582-03	GRAY	BLACK
BTD-(x)-S-P-LA-	30-00582-04	LIGHT ALMOND	BLACK
BTD-(x)-S-P-BK-	30-00582-05	BLACK	WHITE
BTD-(x)-S-P-IV-	30-00582-07	IVORY	BLACK
BTD-(x)-S-P-RD-	30-00582-10	RED	WHITE

NOTES:

- HUBBELL CONTROL SOLUTIONS TO PROVIDE IMAGE SOFTWARE FILE (*.ai OR *.EPS).
- LIGHT PIPE IS TO ALWAYS BE ON THE LEFT OF TEXT ORIENTATION
- POSITION IMAGE ON BUTTON AS SHOWN -CENTERED TEXT SHOWN AS REF.
- IMAGE TO BE FREE OF SMEARS, SMUDGES AND FOREIGN MATERIALS.

HUBBELL
Control Solutions

TITLE

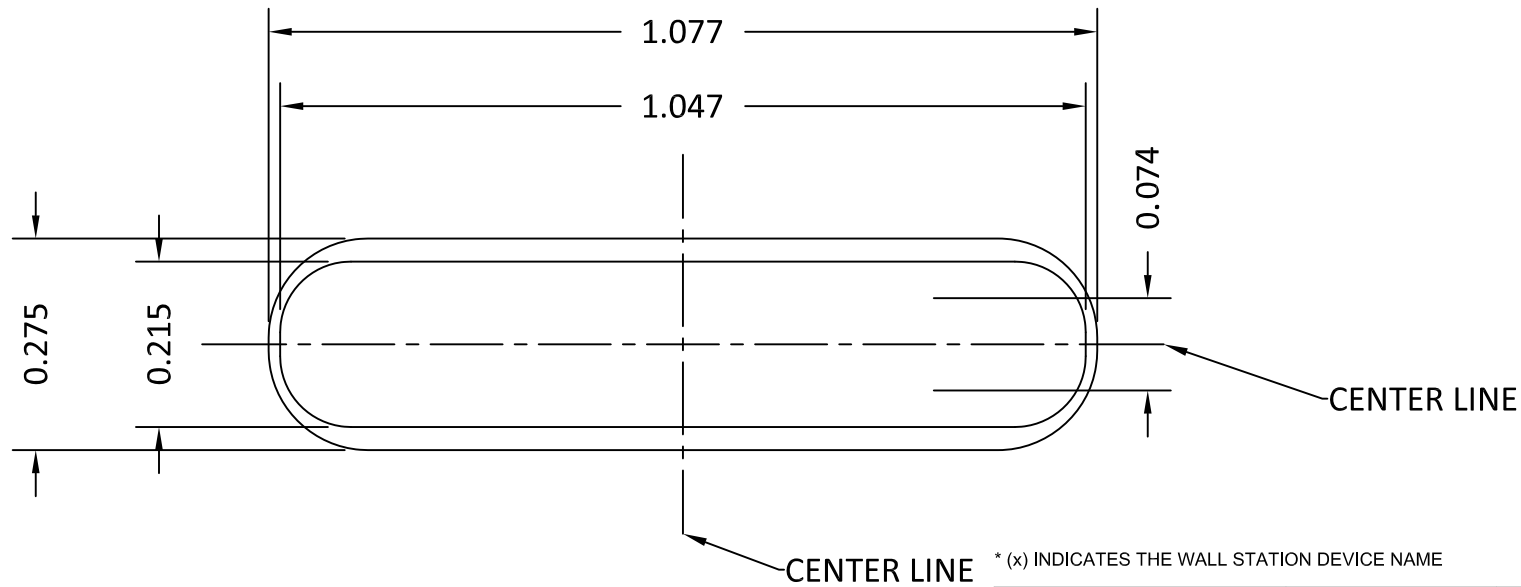
BUTTON LABELED W/LIGHTPIPE

SIZE A	DWG NO 30-00582-xx_	REV A
-----------	------------------------	----------

SCALE: | WEIGHT: | SHEET 1 OF 1

BTD-N-S-N-(x)-CT-

*All Custom Text (CT) must be written in **all caps**



* (x) INDICATES THE WALL STATION DEVICE NAME

*PRINTED PART NO.	BUTTON PART NO.	BUTTON COLOR	IMAGE COLOR
BTD-(x)-S-N-WH-	30-00388-01	WHITE	BLACK
BTD-(x)-S-N-GY-	30-00388-03	GRAY	BLACK
BTD-(x)-S-N-LA-	30-00388-04	LIGHT ALMOND	BLACK
BTD-(x)-S-N-BK-	30-00388-05	BLACK	WHITE
BTD-(x)-S-N-IV-	30-00388-07	IVORY	BLACK
BTD-(x)-S-N-RD-	30-00388-10	RED	WHITE

NOTES:

- HUBBELL CONTROL SOLUTIONS TO PROVIDE IMAGE SOFTWARE FILE (*.ai OR *.EPS).
- POSITION IMAGE ON BUTTON AS SHOWN -CENTERED TEXT SHOWN AS REF.
- IMAGE TO BE FREE OF SMEARS, SMUDGES AND FOREIGN MATERIALS.

**HUBBELL
Control Solutions**

TITLE BUTTON LABELED		
SIZE A	DWG NO 30-00388-xx_	REV A
SCALE:	WEIGHT:	SHEET 1 OF 1