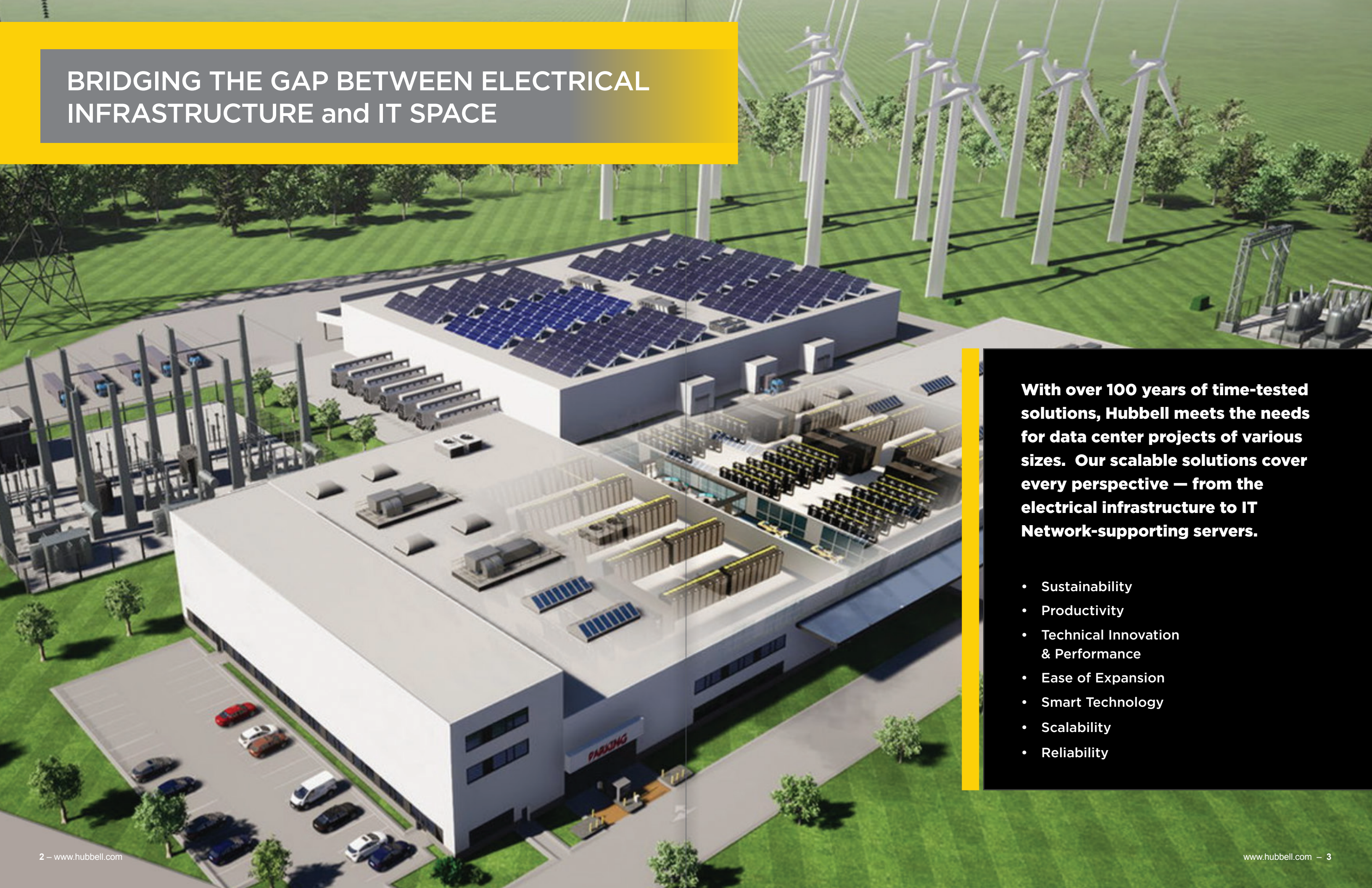


# DATA CENTER SOLUTIONS OVERVIEW





# BRIDGING THE GAP BETWEEN ELECTRICAL INFRASTRUCTURE and IT SPACE



**With over 100 years of time-tested solutions, Hubbell meets the needs for data center projects of various sizes. Our scalable solutions cover every perspective — from the electrical infrastructure to IT Network-supporting servers.**

- Sustainability
- Productivity
- Technical Innovation & Performance
- Ease of Expansion
- Smart Technology
- Scalability
- Reliability



# DATA CENTER SOLUTIONS



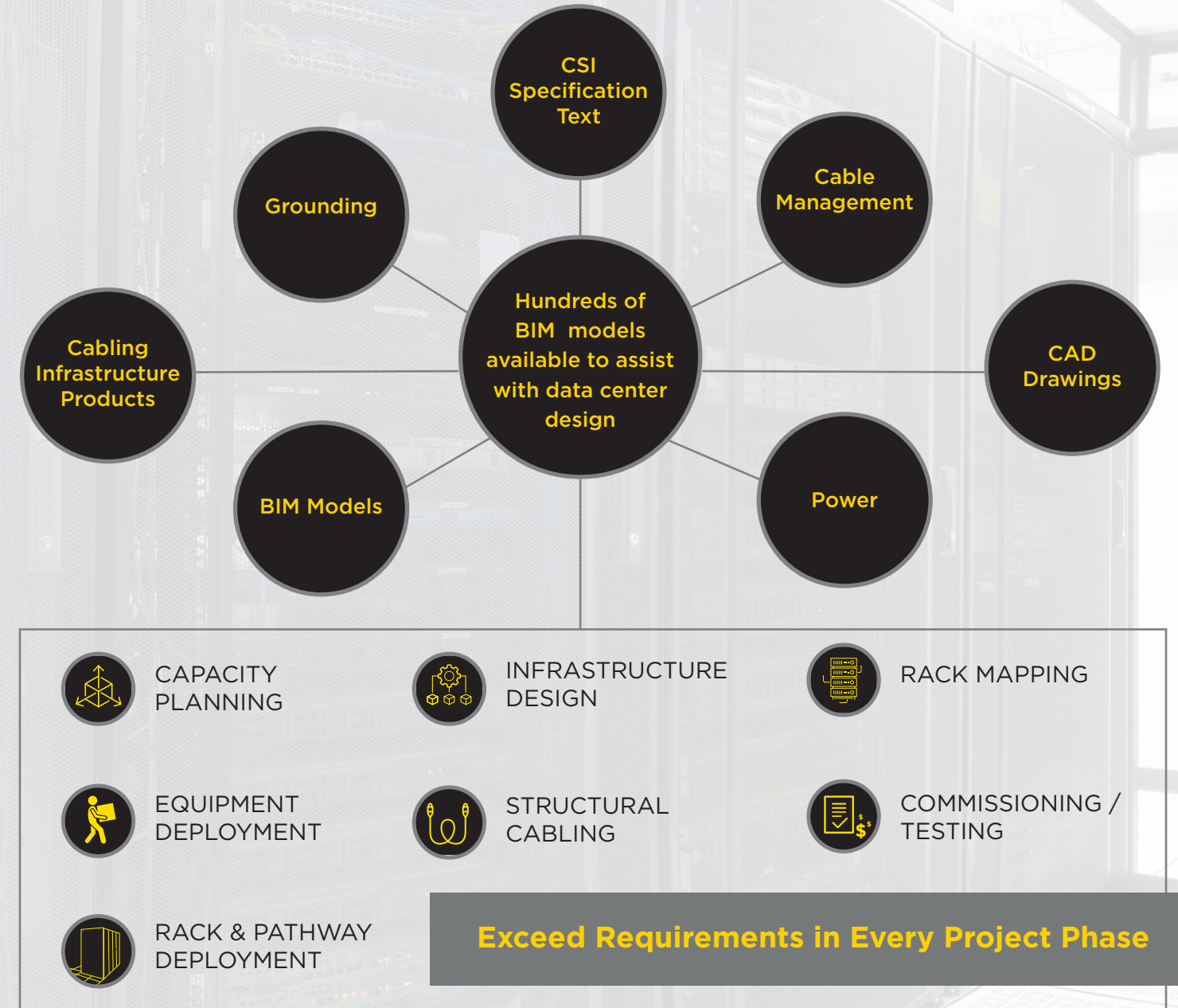
## Electrical Infrastructure

Facility owners and users depend on Commercial Builders to utilize reliable components that provide consistent service. Hubbell's commitment to quality ensures our electrical products deliver high performance installation, safety and user experience. No matter the project size, we align with your construction needs.

 <b>Planning Design</b> BIM, Specifications, Long Lead-Early Bid Packages	 <b>Site Prep-Footing-Foundations</b> Helical Anchors, Grounding, Temporary Power, Floor Boxes, Pour Sleeves, Long Lead Logistics	 <b>Core &amp; Shell</b> (Structured Steel Equipment) Temporary Power, Portable GFCI, Power Connectors, Grounding, Disconnects
 <b>Interior</b> (Rough-in & Trim-out) Pre-fab, Modular, Raco Boxes-fittings, Enterprise wiring, Wiring Devices, Wireless and Wired Networks	 <b>Finish and Prelim Commissioning</b> Communication devices, plates, controls, Engineering troubleshooting support	 <b>Punchlist and Final Commissioning</b> Support, troubleshooting, optimization of controls

## IT Network

We are committed to maintaining a tradition of excellence and delivering unmatched quality, innovation and reliability. Our solutions offer a fully integrated system of copper and fiber network cabling and components that are designed to exceed applicable standards for performance and reliability.



Trust Hubbell As Your Partner





# PRODUCT SOLUTIONS INFRASTRUCTURE



## GROUNDING & BONDING

- Mechanical Grounding Connectors
- HYGROUND® Connectors
- BURNDY Weld Exothermic

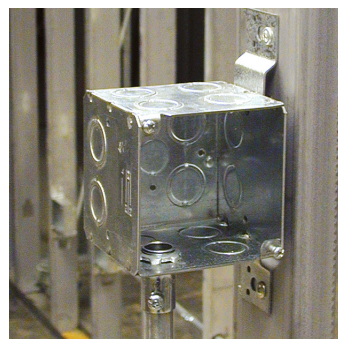
## COMPRESSION LUGS

- Tooling



## PLUGS & RECEPTACLES, CORD REELS, PIN & SLEEVE DEVICES

- Twist-Lock® Edge



## STEEL BOXES & FITTINGS

- Pre-Fab Assemblies
- Ceiling Boxes/Covers
- Square Boxes
- Boxes/Covers: Square, Hard, Large Capacity, Masonry, Multi-Gran, Switch, Wall



## NEMA ENCLOSURES

- NEMA 1
- NEMA 12
- NEMA 3R
- NEMA 4
- NEMA 4X



## CONDUIT BODIES

- Hazardous Locations
- Industrial

## CABLE GLANDS & EXPANSION FITTINGS

- CGB Cable Glands



## MEDIUM VOLTAGE RUBBER GOODS

## UNDERGROUND ENCLOSURES

- Polymer Concrete
- Fiberglass Sectionalizing Cabinets





# PRODUCT SOLUTIONS IT NETWORK



Independent 3rd Party  
Verified Performance



Mission Critical  
25 Year Warranty  
for Eligible Projects

- ANSI/TIA-568.2-D and ISO/IEC 11801 Component Compliance
- Headroom above standards
- 10GBASE-T Data Transmission and High Power (IEEE 802.3bt)
- POE Applications



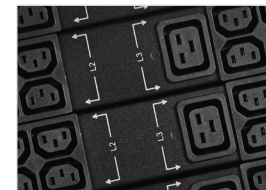
## NEXTSPEED® COPPER SOLUTIONS

- Category 6A UTP & FTP Copper Systems
- Reduced Diameter Cable
- High Density Patch Panels
- Cobra Lock Jacks
- HCL Low OD Patch Cords



## FIBERHUBB® SOLUTIONS

- Custom Trunks and Assemblies
- Fiber Cabling
- Connectivity and Splicing Solutions
- High Density Enclosures and Cassettes



## PHYSICAL INFRASTRUCTURE

- Ladder Rack & Basket Tray
- Networking and Server Cabinets
- Data Racks & Cable Management
- Power Distribution Units



## ACCELTEX WIRELESS SOLUTIONS

- Antennas
- Mounts and Enclosures
- Cabling
- Lightning & Surge Suppression

Trust Hubbell As Your Partner





# MODULAR SOLUTIONS



## Speed

Speed time to deployment with systems that are fully engineered, integrated, and tested prior to delivery. Prefabricated solutions mitigate risks and construction delays to keep pace with business demand.



## Scalability

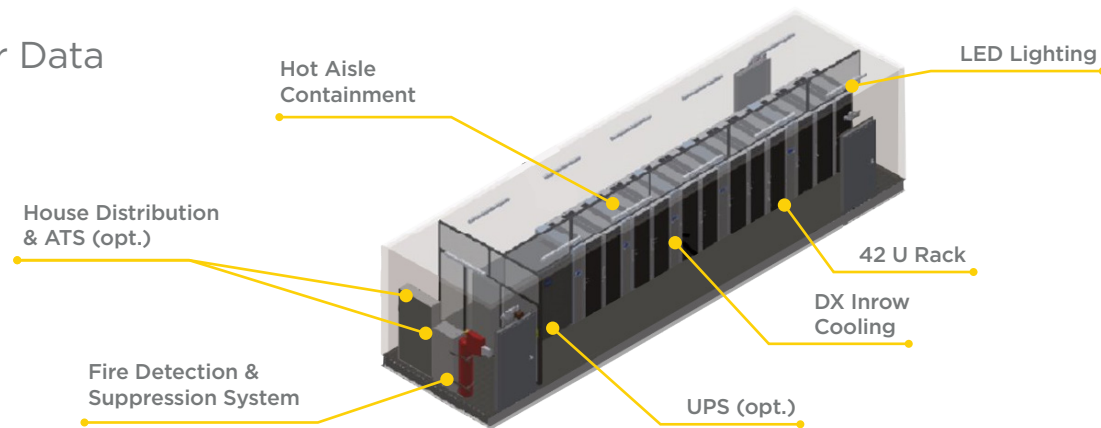
Need to scale? Minimize stranded capacity by only investing in the infrastructure you need now. When you're ready, add more modular units that maintain uniformity of design and serviceability.



## Construction Efficiency by Design

Modular data centers integrate all components into an optimal footprint and deliver the solution in 30% less time than a traditional approach.

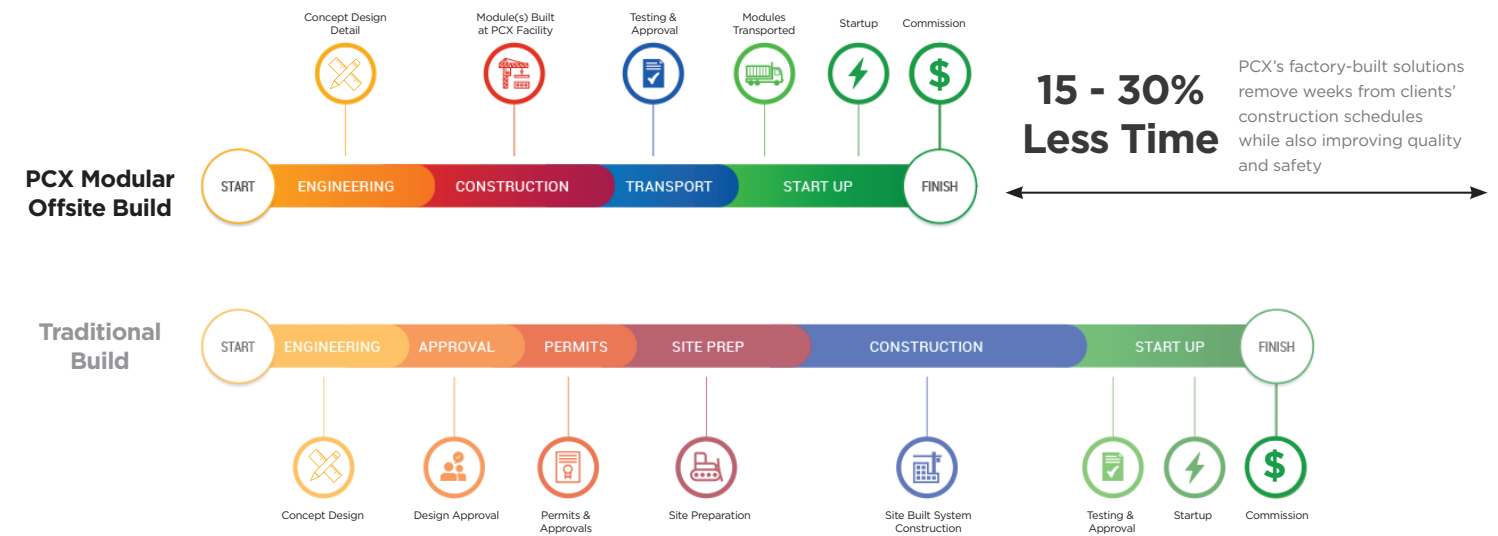
## Modular Data Center



Electrical Skid



Modular Data Center



## Why Partner with...



### 30+ Years of Experience

PCX was founded in 1992 as a modular electrical systems manufacturer, which sets us apart from electrical contractors building off-site in a warehouse. Since 2004 PCX has delivered several hundred modular data centers to OEM's, universities, healthcare and large hyperscale customers throughout the United States.



### Tailored Offerings

PCX's standard product offerings can be tailored to meet your specific application, or for unique requirements a bespoke solution can be designed. Being vendor-agnostic enables PCX to utilize your preferred suppliers.



### Industry Leading Quality

PCX has earned a reputation for unmatched quality in every process step, from design engineering to site installation. PCX is ISO9001 certified, utilizes processes built on Advanced Product Quality Planning principles, and provides UL certifications for our products.



### Collaborative Partnership

We work closely with your team from Day 1 as we learn about your needs and continue to do so throughout the process until we ensure you're totally satisfied with the final product. We're responsive to our customers' budgetary constraints, special requests and changes that may arise during a project.





## Electrical Infrastructure

Electrical Infrastructure

	Bonding & Grounding	Power Connectors/Lugs	Wiring Devices	Cord Reels	Outlet Boxes	NEMA Enclosures	Underground Enclosures	MV Terminations & Rubber Goods	Wire Basket	Cable Tray	Pulling Heads	Transformers & Power Quality
<b>Competitor 1</b>	●	●			●	●		●	●	●	●	●
<b>Competitor 2</b>	●	●		●	●				●	●	●	
<b>Competitor 3</b>	●	●				●			●	●		
<b>Competitor 4</b>			●	●	●				●	●		
<b>Competitor 5</b>			●						●			
<b>Competitor 6</b>	●	●							●	●		
<b>Competitor 7</b>		●				●			●	●		
<b>Competitor 8</b>						●						
<b>Hubbell Family of Brands</b>	●	●	●	●	●	●	●	●	●	●	●	●

## IT Network

IT Network

	Racks/Cabinets	Wire Management	Power Distribution Units	Rack Grounding & Bonding	Copper Cabling	Copper Connectors & Accessories	Fiber Cabling	Fiber Connectors & Accessories	Patch Panels	Custom Trunk & Assemblies	Wireless Network	Enclosures
<b>Competitor 1</b>				●								
<b>Competitor 2</b>					●	●						
<b>Competitor 3</b>	●	●	●	●								●
<b>Competitor 4</b>	●	●	●	●	●	●	●	●	●	●	●	●
<b>Competitor 5</b>	●	●	●		●	●	●	●	●	●		
<b>Competitor 6</b>	●	●	●	●	●	●	●	●	●	●	●	●
<b>Competitor 7</b>	●	●	●	●	●	●	●	●	●	●	●	●
<b>Competitor 8</b>	●	●	●	●								
<b>Hubbell Family of Brands</b>	●	●	●	●	●	●	●	●	●	●	●	●



# RELIABLE - TIME TESTED



**Harvey Hubbell**  
Founder 1888

**1896**  
Pull-chain Electrical  
Light Socket patent

**1896-1909**  
45 patents

**1904**  
The U.S. Electrical Plug &  
Receptacle made portable  
electrical devices possible



You can rely on Hubbell's reputation for quality products to complete today's data center builds. Offering scalable solutions from the Electrical Infrastructure to the IT Network.



- Products
- Services
- Training
- Large Distribution Network

Hubbell Incorporated is a global manufacturer of quality electrical and electronic products for a broad range of applications in the electrical and power segments.

**130+**  
Years Serving  
Our Customers

**18,300**  
Employees Across  
the Globe

**9**  
Global Operations  
in 9 Countries

**3,000**  
Patents

**53**  
Manufacturing  
Locations





## COMMERCIAL AND INDUSTRIAL PRODUCT CATEGORIES

- WIRING DEVICES & ACCESSORIES
- PLUGS & RECEPTACLES
- SWITCHES & DIMMERS
- DATACOM CONNECTIVITY & ENCLOSURES
- PIN & SLEEVE DEVICES
- JUNCTION BOXES
- CABLE REELS
- STEEL & PLASTIC ENCLOSURES
- GROUND FAULT DEVICES
- ELECTRICAL MOTOR CONTROLS



## LIGHTING AND CONTROLS PRODUCT CATEGORIES

- DECORATIVE LANDSCAPE FIXTURES
- RECESSED, SURFACE MOUNTED & TRACK FIXTURES
- SITE & AREA LIGHTING
- BATH/VANITY FIXTURES & CEILING FANS
- OCCUPANCY, DIMMING & DAYLIGHT SENSORS



## CONSTRUCTION AND ENERGY PRODUCT CATEGORIES

- MECHANICAL CONNECTORS GAS CONNECTORS AND ASSEMBLIES
- MECHANICAL GROUNDING DEVICES
- MINING COMMUNICATION & CONTROLS
- SPECIALTY LIGHTING
- SAFETY EQUIPMENT
- SPECIALTY COMMUNICATIONS EQUIPMENT
- INSTALLATION TOOLING
- COMPRESSION CONNECTORS
- CABLE GLANDS & FITTINGS



## POWER SYSTEMS PRODUCT CATEGORIES

- ARRESTERS
- GROUNDING & BONDING EQUIPMENT
- INSULATORS
- POLE LINE HARDWARE
- SECTIONALIZERS
- FORMED WIRE PRODUCTS
- OVERHEAD, PAD MOUNTED & CAPACITOR SWITCHES
- METER INSTALLATION SERVICES
- ADVANCED METERING INFRASTRUCTURE
- METERS AND EDGE DEVICES
- BUSHINGS
- CUTOUTS & FUSE LINKS
- PROGRAMMABLE RECLOSERS
- CABLE TERMINATIONS & ACCESSORIES
- HELICAL ANCHORS & FOUNDATIONS
- LINEMAN TOOLS, HOSES & GLOVES
- SPLICES, TAPS & CONNECTORS
- POLYMER CONCRETE & FIBERGLASS ENCLOSURES AND EQUIPMENT PADS
- WILDLIFE MITIGATION SOLUTIONS



Hubbell Incorporated  
40 Waterview Drive  
Shelton, Connecticut 06484  
[www.hubbell.com](http://www.hubbell.com)

4/2023  
18000116

Copyright © 2022 Hubbell Inc. All rights reserved. Please refer to online specifications for most up-to-date content as specifications are subject to change without notice.