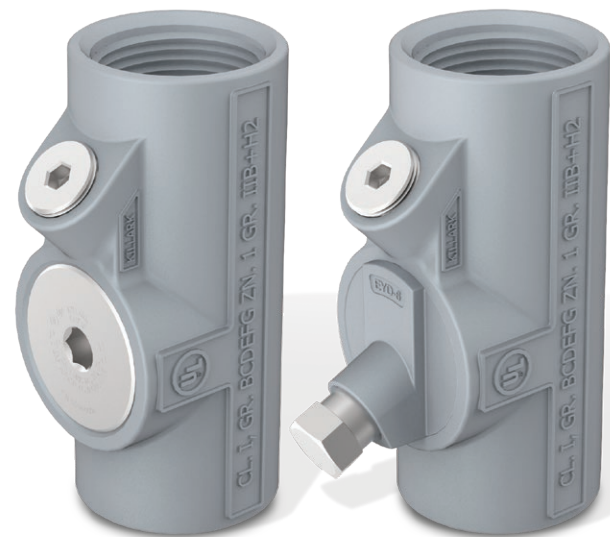


Hazardous-rated seal-off fittings in expanded trade sizes and with improved design

New look, same reliability

ENY series for horizontal and vertical installations

- **Expanded trade sizes now up to 4"**
- Minimal turn radius for optimal spacing of both enclosures and conduit
- Large openings for ease of access to conductors for proper dam installation
- Engineered to latest 419 hub specifications for superior continuity and ingress protection
- Integral bushing to protect conductors during installation



EYD series for vertical installations

- 1/2 - 1" design allows fast installation — no hose or additional accessories needed prior to pour
- **Improved design on sizes 1-1/4 - 4" allows for optimized turn radius**
- Temporary plastic sleeve protects the threads for drain from contamination when pouring
- Continuous water drain path allows conduit run to breathe
- Furnished with KDB-1
- **K-Drain kits available to convert ENY-4 through ENY-0 to EYD drain seal**

Applications

- Use in hazardous conduit runs
- Transition from classified to non-classified areas
- Minimize the passage of hazardous gases



A proud member of the Hubbell family.