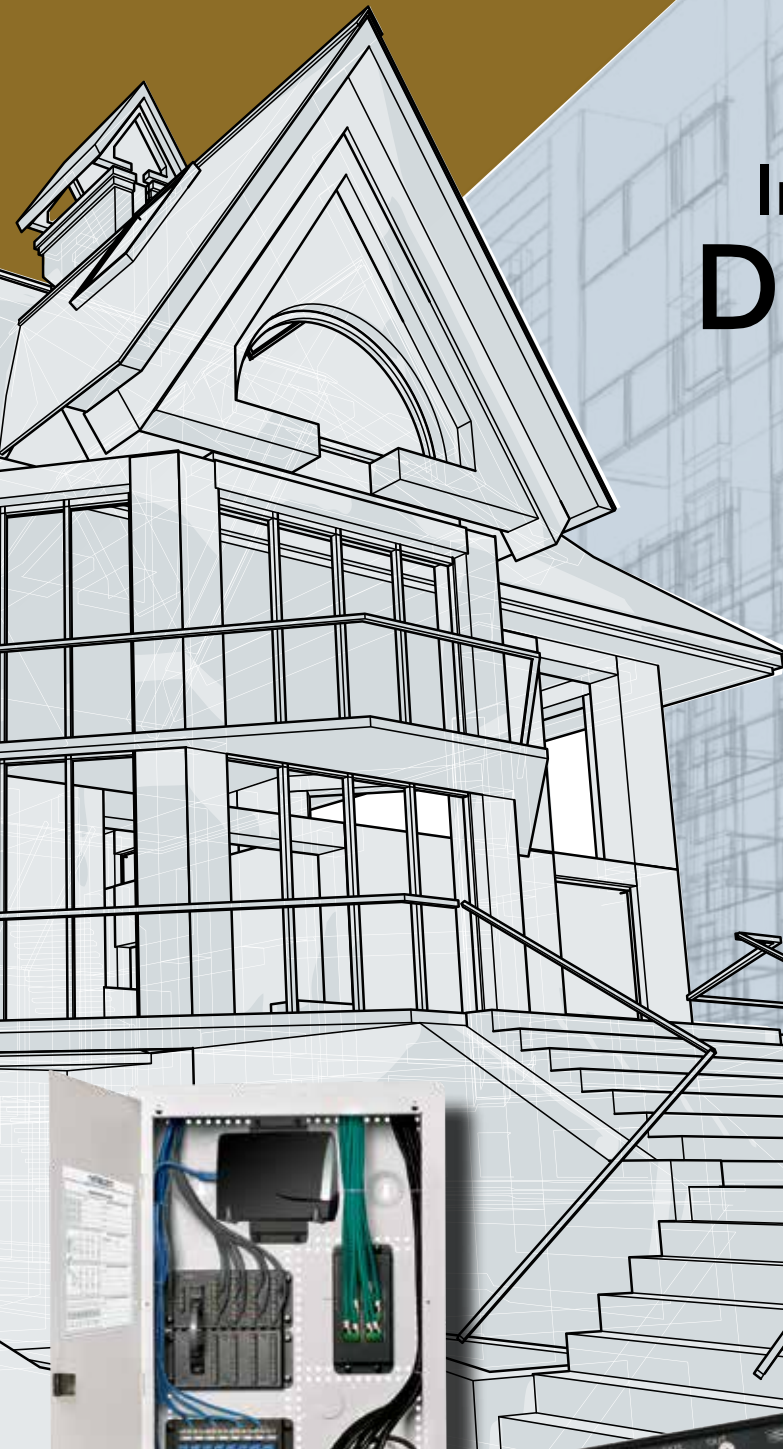


**HUBBELL**<sup>®</sup>  
Premise Wiring



# Infrastructure for Digital Lifestyles





**Efficient** | Use UTP cable to save time, labor, space and materials



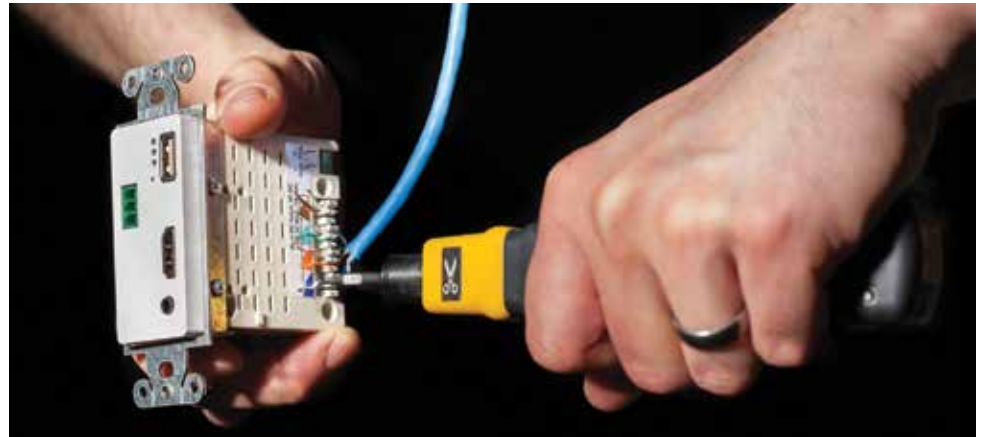
**Capable** | Send 4K, UHD HDMI up to 300 feet



**Integrated** | USB charging receptacle with 5V DC eliminates external power supplies

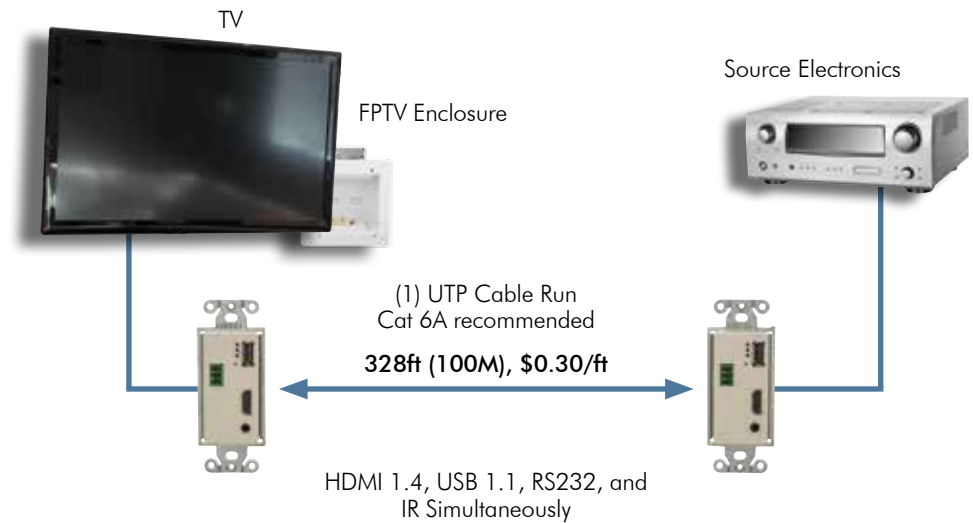
### Benefits

- Transmit over one or two UTP cables
- Extend AV signals 75-150 feet or HDBaseT to 328 feet
- 110 termination reduces installation time
- Utilize same cable for current and future applications



**AV Connections over UTP cabling** | Traditional AV cabling does not support networked AV delivery—terminations are time consuming, cable is expensive and thick relative to Cat5e and Cat6 cable. Hubbell AV 110 Everywhere™ modules provide traditional 110 terminations that utilize readily available and cost effective UTP cable, reducing installation time and cost. It also supplies the cabling needed to support the transition toward IP based AV distribution and control. Combine with Hubbell's extensive line of AV and power connection boxes for floor, in-wall and furniture to provide a complete AV infrastructure.

### HDMI Over HDBaseT AV Distribution



# AV 110 Everywhere™

netSELECT®

## USB 2.0 Full Speed 110 Extenders, 100ft

Module 1 unit	
Color	Catalog Number
Black	<b>IMU1101BK</b>
Electric Ivory	<b>IMU1101EI</b>
Gray	<b>IMU1101GY</b>
Office White	<b>IMU1101OW</b>
White	<b>IMU1101W</b>

## Tamper-Resistant Receptacle with 5V DC Power Output

USB charger		
Description	Color	Catalog Number
(1) USB port 3A 5V DC output; 15A 125V AC decorator duplex	Black	<b>AVPS15BK</b>
	Ivory	<b>AVPS15EI</b>
	Gray	<b>AVPS15GY</b>
	Office White	<b>AVPS15OW</b>
	White	<b>AVPS15W</b>

## VGA and 3.5mm HD AV Extender, 75ft

Module 1.5 unit	
Color	Catalog Number
Black	<b>IM15311015BK</b>
Electric Ivory	<b>IM15311015EI</b>
Gray	<b>IM15311015GY</b>
Office White	<b>IM15311015OW</b>
White	<b>IM15311015W</b>

## 110 Termination 3.5mm Stereo Jack

Female to female		
Description	Color	Catalog Number
Stereo jack	Black	<b>SF35110BK</b>

## HDMI AV Extender, 120–140ft

2 unit		
Color	Style Line®	2-Unit Module
Black	<b>ISFH110BK</b>	<b>IMH110ST2BK</b>
Electric Ivory	<b>ISFH110EI</b>	<b>IMH110ST2EI</b>
Gray	<b>ISFH110GY</b>	<b>IMH110ST2GY</b>
Office White	<b>ISFH110OW</b>	<b>IMH110ST2OW</b>
White	<b>ISFH110W</b>	<b>IMH110ST2W</b>

## HDBaseT, HDMI, USB, IR and RS232, 330ft

3 unit		
Color	Style Line®	3-Unit Module
Black	<b>ISFHDBT3BK</b>	<b>IMHDBT3BK</b>
Electric Ivory	<b>ISFHDBT3EI</b>	<b>IMHDBT3EI</b>
Gray	<b>ISFHDBT3GY</b>	<b>IMHDBT3GY</b>
Office White	<b>ISFHDBT3OW</b>	<b>IMHDBT3OW</b>
White	<b>ISFHDBT3W</b>	<b>IMHDBT3W</b>

## 110 AV Modules, 100ft

1.5 unit			1 unit	
Color	RCA Component Video, Left/Right Audio	RCA Component Video, 3.5mm Audio	RCA Component Video, HD	RCA Left/Right Audio
Black	<b>IMCAR11015BK</b>	<b>IMC3511015BK</b>	<b>IMCR1101BK</b>	<b>IMAR1101BK</b>
Electric Ivory	<b>IMCAR11015EI</b>	<b>IMC3511015EI</b>	<b>IMCR1101EI</b>	<b>IMAR1101EI</b>
Gray	<b>IMCAR11015GY</b>	<b>IMC3511015GY</b>	<b>IMCR1101GY</b>	<b>IMAR1101GY</b>
Office White	<b>IMCAR11015OW</b>	<b>IMC3511015OW</b>	<b>IMCR1101OW</b>	<b>IMAR1101OW</b>
White	<b>IMCAR11015W</b>	<b>IMC3511015W</b>	<b>IMCR1101W</b>	<b>IMAR1101W</b>



4-Way Coaxial Splitter  
NSOVM4



AV Power Supply  
AVPS15W



HD AV Extenders  
IM15311015OW



USB 110 Extenders  
IMU1101OW

# In-Wall AV Delivery

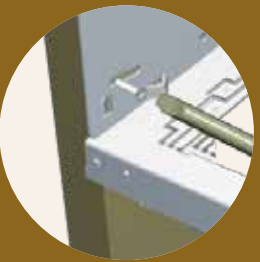
**Flat Panel TV** installations demand the best connections to assure optimum image quality. Hubbell has engineered a metal recessed enclosure that accommodates connections for HDMI, DVI, RG6/UQ and VGA, allowing large, high density cables to fit in the smallest footprint possible. Compatible with a wide variety of TV mounts, this FPTV enclosure provides an in-wall, structured network for multimedia connections and cables.



Optional screw-on cover reduces tampering and protects connections



Mounts to sheetrock



Mounts to studs

## In-wall delivery of multimedia and power



Enclosure with 15 Amp duplex receptacle kit for power

Enclosure scenarios:

- Cat 6 jack for Internet TV
- Double HDMI with wallplate

Cabling scenarios:

- Device-to-device HDMI cable
- Two HDMI in-wall cables

Alternate output available for connection to other equipment (computers, game systems, etc.)

Connection scenarios:

- Coax cable in from provider
- Dual HDMI
- RCA component video from source electronics and auxiliary equipment

# In-Wall AV Delivery

netSELECT®

## Specifications



- 18 gauge cold rolled steel base
- White powder coat finish
- High impact ABS trim ring

## Standards

- cULus 1863 listed
- UL V0 flame rating on ABS trim ring



Cover  
NSAV6C

## FPTV Connection Enclosure

Description	Height Inches (mm)	Width Inches (mm)	Depth Inches (mm)	Color	Catalog No.
2-gang in-wall enclosure	8.16" (207)	7.92" (201)	3.37" (86)	White	<b>NSAV62M</b>
Steel cover for NSAV6 series	7.2" (183)	7.2" (183)	0.05" (1)	White	<b>NSAV6C</b>
Block wall adapter					<b>NSAV6BW</b>
New work stud brackets					<b>NSAV6NW</b>

## Power Kits

Description	Color	Catalog No.
Standard power kit	White	<b>NSOKPTR</b>
Surge protected power kit	Blue	<b>NSOKPS</b>



Power Kit  
NSOKPS

## Feed-Through Plates

Description	Color	Catalog No.
1-gang	Ivory	<b>NSAV1I</b>
	White	<b>NSAV1W</b>
2-gang	Ivory	<b>NSAV2I</b>



Feed-Through Plate  
NSAV1I

# Network Enclosures



## Specifications

- Material: 20-18 gauge steel
- Finish: white, powder coat
- UL and cULus Listed 1863



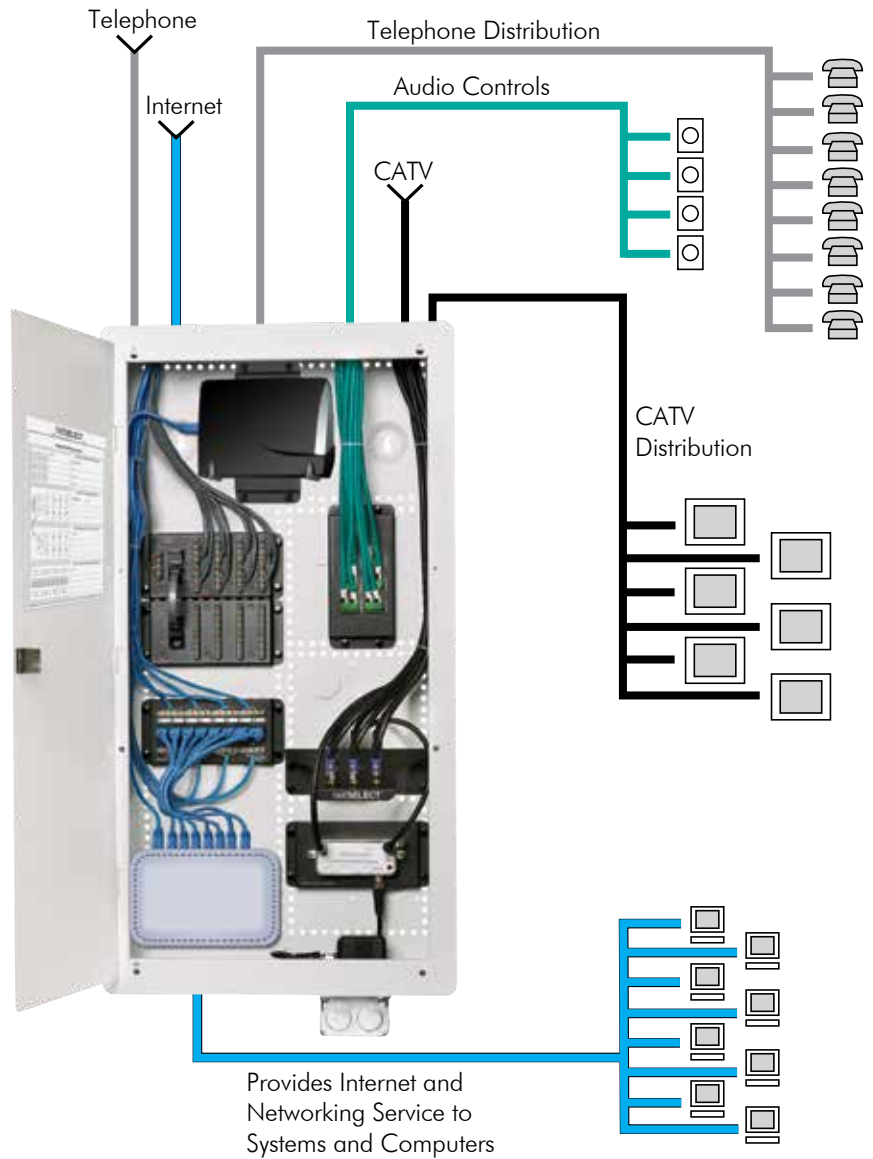
**Flexible** | Hinged cover can be mounted to swing from either side



**Options** | Horizontal and vertical module mounting holes provide maximum flexibility



**Installation** | Additional nylon push pins assist module mounting



# Network Enclosures

netSELECT®

## Pre-Configured Network System

Description	Catalog No.
Basic home network kit includes: - One box with hinged cover NSOBOX14 - One primary 8-port telephone module NSOPTM8 - One four way coaxial splitter module NSOVM4	<b>NSOBNK14</b>



Pre-Configured Network Kit  
NSOBNK14

## 10-Inch Network Enclosure for MDU and Modular Applications

Description	Height Inches (mm)	Width Inches (mm)	Depth Inches (mm)	Module Placement	Catalog No.
With hinged cover	11.55" (293)	15.65" (398)	4.08" (104)	3	<b>NSOBX10</b>
With panel cover	11.07" (281)	–	4.08" (104)	3	<b>NSOBX10BC</b>
10"H box only	10.07" (256)	14.38" (365)	3.96" (101)	3	<b>NSOBX10B</b>
Hinged door	11.55" (293)	15.65" (398)	0.58" (15)	–	<b>NSOBX10D</b>
Panel cover	11.07" (281)	15.50" (594)	0.20" (5)	–	<b>NSOBX10C</b>

## 14-Inch Network Enclosure

Description	Height Inches (mm)	Width Inches (mm)	Depth Inches (mm)	Module Placement	Catalog No.
With hinged cover	15.55" (395)	15.65" (398)	4.08" (104)	5	<b>NSOBOX14</b>
With panel cover	15.10" (384)	15.54" (395)	4.08" (104)	5	<b>NSOBOX14BC</b>
14"H box only	14.00" (356)	14.38" (365)	3.96" (101)	5	<b>NSOBOX14B</b>
Hinged door	15.55" (395)	15.65" (398)	0.33" (8)	–	<b>NSOBOX14D</b>
Vented door (louver)	15.55" (395)	15.65" (398)	0.52" (15)	–	<b>NSOBOX14DL</b>
Panel cover	15.11" (384)	15.54" (395)	0.20" (5)	–	<b>NSOBOX14C</b>
2"D extension bracket w ventilation, WiFi KO	15.30" (389)	15.57" (395)	2.00" (51)	–	<b>NSOBOX14X2</b>



10-Inch  
NSOBX10

## 28-Inch Network Enclosure

Description	Height Inches (mm)	Width Inches (mm)	Depth Inches (mm)	Module Placement	Catalog No.
With hinged cover	29.55" (751)	–	–	11	<b>NSOBOX28</b>
With panel cover	29.13" (740)	15.54" (395)	4.08" (104)	11	<b>NSOBOX28BC</b>
28"H box only	28.00" (711)	14.38" (365)	3.96" (101)	11	<b>NSOBOX28B</b>
Hinged door	29.55" (751)	15.65" (398)	0.33" (8)	–	<b>NSOBOX28D</b>
Vented door (louver)	29.55" (751)	15.65" (398)	0.52" (15)	–	<b>NSOBOX28DL</b>
Panel cover	29.29" (744)	15.54" (395)	0.20" (5)	–	<b>NSOBOX28C</b>
2"D extension bracket w ventilation, WiFi KOs	29.3" (744)	15.57" (395)	2.00" (51)	–	<b>NSOBOX28X2</b>



14-Inch  
NSOBOX14

## 48-Inch Network Enclosure

Description	Height Inches (mm)	Width Inches (mm)	Depth Inches (mm)	Module Placement	Catalog No.
With hinged cover	48.94" (1243)	14.94" (379)	4.07" (103)	21	<b>NSOBOX48*</b>

\*Door covers rough-in; no trim ring provided

# Network Modules



## Specifications

- Meets FCC Part 68 standard
- Finish: black, powder coat
- Material: 18 gauge steel or high impact plastic
- UL and cULus Listed 1863
- All data and phone modules 568A wired



Combination Module  
NSOTVDM6



Expansion Telephone Module  
NSOPTM8



Multiport Telecom Module  
NSOMTM24



Combination Module  
NSO6P1DM

## Combo Modules

Description	Units	Catalog No.
6-port telephone panel and 6-port coaxial splitter with optional 6-port Category 5e panel provides voice, video, and data distribution in a space efficient package; perfect for use with NSOBOX10 and NS790xx plates to quickly establish a comprehensive home network		
6-port telephone and video	3	<b>NSOTVM6</b>
6-port telephone, video and Category 5e	3	<b>NSOTVDM6</b>
6-port Category 5e data upgrade kit	3	<b>NSODK6</b>

## Primary Telephone Module

Description	Units	Catalog No.
8-port phone outlets with up to 4 incoming lines for voice, fax or modem applications in a protected PCB module; pre-mounted push pins snap the module quickly into place; RJ31X interface jack included for security system connection; RJ45 jack interfaces with optional NSOETM8 telephone expansion module for additional extensions	1	<b>NSOPTM8</b>

## Expansion Telephone Module

Description	Units	Catalog No.
8-port adds an additional 8 phone outlets with up to 4 incoming lines when used with the primary telephone module; pre-mounted push pins snap the module quickly into place; includes RJ45 jumper cord to connect with NSOPTM8 primary telephone module	1	<b>NSOETM8</b>

## Data Modules

Description	Units	Catalog No.
Category 5e data module, 8-port supports Gigabit Ethernet for up to 8 C5e data lines with front 110 punch-down terminations in a protected PCB module; pre-mounted push pins snap the module quickly into place	1	<b>NSODM8</b>
Category 6 data module, 8-port supports enhanced transmission speeds beyond Gigabit Ethernet; future-proof for tomorrows applications	1	<b>NSODM8C6</b>

## Multiport Patchable Telecom Module

Description	Units	Catalog No.
Terminates lines via modular plug to accommodate flexibility, by changing plug locations; reconfigure where phone lines go at the panel level; allows data lines to be converted to voice, with the move of a patch cord; includes nine RJ45 jumper cords	2	<b>NSOMTM24</b>

## Combination Module

Description	Units	Catalog No.
6-port telephone and 1-port Category 5e data provides basic telephone and data delivery in a small package; allows data lines to be converted to voice, with the move of a patch cord	1	<b>NSO6P1DM</b>



# AV Modules

netSELECT®

## Specifications



- Finish: black, powder coat
- UL and cULus Listed 1863
- Low-profile saves space
- Simple push pin mounting saves time



## 4-Way Coaxial Splitter Modules

One incoming line, four outgoing

Description	Units	Catalog No.
1Ghz, basic unit	1	<b>NSOVM4</b>
2.3Ghz, enhanced capability	1	<b>NSOVM42G</b>

## 6-Way Coaxial Splitter Modules

One incoming line, six outgoing

Description	Units	Catalog No.
1Ghz, basic unit	1	<b>NSOVM6</b>
2.3Ghz, enhanced capability	1	<b>NSOVM62G</b>

## 8-Way Coaxial Splitter Modules

One incoming line, eight outgoing

Description	Units	Catalog No.
1Ghz, basic unit	1	<b>NSOVM8</b>
2.3Ghz, enhanced capability	1	<b>NSOVM82G</b>

## Fixed Video Amplifier Module

120 Volt rated

Description	Units	Catalog No.
10dB, provides video signal amplification for incoming cable feeds recommended for use when more than four outputs are installed or when signal level is low; provides 10dB forward path gain and supports current digital cable systems and modems with a passive return; pre-mounted push pins snap the module quickly into place; includes RG-59 cable jumper to connect amplifier to passive video splitter	1	<b>NSOVAMP</b>

## Eight Room Audio Module

Description	Units	Catalog No.
Distributes audio from an amplifier to matching volume controllers; supports up to eight rooms of audio; power handling – 200W RMS@20° C; requires impedance matching volume controls	1	<b>NSOAM8</b>

## Blank Module Plate

Description	Units	Catalog No.
Allows mounting of active components (i.e. switches, routers) or other devices (66 blocks, audio components) onto a modular platform; can be custom drilled or used with two self-adhesive VELCRO® strips included to mount components onto module; pre-mounted push pins snap the module quickly into place	1	<b>NSOBM</b>



4-Way Coaxial Splitter  
NSOVM4



8-Way Coaxial Splitter  
NSOVM8



Fixed Audio Amplifier  
NSOVAMP



Eight Room Audio  
NSOAM8

VELCRO® is a registered trademark of Velcro Industries B.V.



Slide Volume Controller  
NSOSAVC



Rotary Volume Controller  
NSORAVC



Surge Receptacle  
NSOKPS



Panel Bracket Adapter  
NSOFSB



F-Connector Adapter Panel  
FSPFP6X

## Accessories



### Features and Benefits

- netSELECT® accessories enhance system capabilities
- Volume controls expand home audio applications
- Cabinet mounted receptacle kits provide convenient power to the enclosure
- Audio controls available in slide or rotary
- Receptacles available in surge and standard kits

### Slide Audio Volume Controller

Description	Color	Catalog No.
Decorator styling; power handling 70W RMS@20° C; impedance matching for up to 8 pairs of speakers; includes both ivory and white slides and frames	Ivory/White	<b>NSOSAVC</b>

### Rotary Audio Volume Controller

Description	Color	Catalog No.
Power handling 70W RMS@20° C; impedance matching for up to 8 pairs of speakers; includes both ivory and white knobs and frames	Ivory/White	<b>NSORAVC</b>

### Standard Power Kit

Description	Catalog No.
Includes duplex receptacle 15A 125V; NEMA 5-15R electrical steel box and wallplate	<b>NSOKPTR</b>

### Surge Suppression Power Kit

Description	Catalog No.
Includes surge receptacle 15A 125V; NEMA 5-15R, 240 joules/15,000A protection; per mode; electrical steel box and wallplate	<b>NSOKPS*</b>

### Lock Kit

Description	Catalog No.
Chromed steel; includes two keys; eliminates unwanted tampering	<b>FLOCK1*</b>

### Panel Bracket Adapter

Description	Catalog No.
For use with adapter panels shown below and FSP series modules; snap mounts into structured cabling enclosures	<b>NSOFSB</b>

### F-Connector Adapter Panel

Description	Catalog No.
F-connector adapter panel with six populated coaxial connectors	<b>FSPFP6X</b>

### Keystone Adapter Panel

Description	Catalog No.
Features six blank openings for jacks and snap fits	<b>FSPHD6X</b>

\*Not UL or cULus Listed.

## Specifications



- TIA 568-C.2 Category 5e/6 component compliant
- cULus Listed



## Universal Consolidation Blocks and Patch Panels

### Consolidation Blocks

Ports	Category	Height Inches (mm)	Width Inches (mm)	Depth Inches (mm)	Catalog No.
12	5e	10.00" (254)	3.30" (84)	1.79" (45)	<b>NSP5E12</b>
12	6	10.00" (254)	3.30" (84)	1.79" (45)	<b>NSP612</b>

### Patch Panels

Ports	Category	Height Inches (mm)	Width Inches (mm)	Depth Inches (mm)	Catalog No.
24	5e	1.72" (44)	19.00" (483)	1.24" (31)	<b>NSP5E24</b>
48	5e	3.47" (88)	19.00" (483)	1.24" (31)	<b>NSP5E48</b>
24	6	1.72" (44)	19.00" (483)	1.21" (31)	<b>NSP624</b>
48	6	3.47" (88)	19.00" (483)	1.21" (31)	<b>NSP648</b>

## netSELECT® Category 6, 5e and USOC Jacks

Color	Modular Snap Fit Cat 6 Jack (Single Pack)	Modular Snap Fit Cat 6 Jack (25-pack)	Modular Snap Fit Cat 5e Jack (Single Pack)	Modular Snap Fit Cat 5e Jack (25-pack)	Modular Snap Fit USOC Jack (Single Pack)
Black	<b>NSJ6BK</b>	<b>NSJ6BK25</b>	<b>NSJ5EBK</b>	<b>NSJ5EBK25</b>	<b>NSJUBK</b>
Blue	<b>NSJ6B</b>	<b>NSJ6B25</b>	<b>NSJ5EB</b>	<b>NSJ5EB25</b>	<b>NSJUB</b>
Gray	<b>NSJ6GY</b>	<b>NSJ6GY25</b>	<b>NSJ5EGY</b>	<b>NSJ5EGY25</b>	<b>NSJUGY</b>
Green	<b>NSJ6GN</b>	<b>NSJ6GN25</b>	<b>NSJ5EGN</b>	<b>NSJ5EGN25</b>	<b>NSJUGN</b>
Ivory	<b>NSJ6I</b>	<b>NSJ6I25</b>	<b>NSJ5EI</b>	<b>NSJ5EI25</b>	<b>NSJUI</b>
Light Almond	<b>NSJ6LA</b>	<b>NSJ6LA25</b>	<b>NSJ5ELA</b>	<b>NSJ5ELA25</b>	<b>NSJULA</b>
Orange	<b>NSJ6OR</b>	<b>NSJ6OR25</b>	<b>NSJ5EOR</b>	<b>NSJ5EOR25</b>	<b>NSJUOR</b>
Red	<b>NSJ6R</b>	<b>NSJ6R25</b>	<b>NSJ5ER</b>	<b>NSJ5ER25</b>	<b>NSJUR</b>
White	<b>NSJ6W</b>	<b>NSJ6W25</b>	<b>NSJ5EW</b>	<b>NSJ5EW25</b>	<b>NSJUW</b>
Yellow	<b>NSJ6Y</b>	<b>NSJ6Y25</b>	<b>NSJ5EY</b>	<b>NSJ5EY25</b>	<b>NSJUY</b>



Consolidation Block  
NSP5E12



Cat 6 Snap Fit Jack  
NSJ6W



Snap Fit USOC Jack  
NSJUW

# Frames and Plates



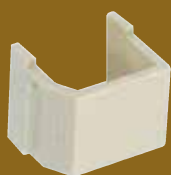
4-Port Frame  
NS614I



Adapter Frame  
NS621I



3-Port, 1-Gang, Standard  
NSP13I



Blank Connector  
SFSBE10



## Features and Benefits

- Elongated strap for better wall box mounting
- High impact-resistant thermoplastic frame
- UL Listed 1863 - Communication Circuit Accessory and CSA Certified

## Decorator Frames

Description	Catalog No.
2-Port	<b>NS612xx</b>
3-Port	<b>NS613xx</b>
4-Port	<b>NS614xx</b>
6-Port	<b>NS616xx</b>
Adapter, .406" (10.3mm) diameter hole	<b>NS621xx*</b>
Adapter, Blank	<b>NS620xx</b>

xx = Color: **BK** (Black), **GY** (Gray), **I** (Ivory), **LA** (Light Almond) and **W** (White);

\*Available in **I** (Ivory) and **W** (White) only

Note: Use NS621 with rotary dimmers or to pull through AV or telephone cable; use NS620 to fill an extra decorator opening or create customized openings

## Multimedia Face Plates, 1-Gang

Description	Standard	Midsize
1-Port	<b>NSP11xx</b>	<b>NSP101xx</b>
2-Port	<b>NSP12xx</b>	<b>NSP102xx</b>
3-Port	<b>NSP13xx</b>	<b>NSP103xx</b>
4-Port	<b>NSP14xx</b>	<b>NSP104xx</b>
6-Port	<b>NSP16xx</b>	<b>NSP106xx</b>

xx = Color: **BK** (Black), **GY** (Gray), **I** (Ivory), **LA** (Light Almond) and **W** (White)

## Multimedia Face Plates, 2-Gang

Description	Standard
4-Port	<b>NSP24xx</b>
6-Port	<b>NSP26xx</b>

xx = Color: **BK** (Black), **GY** (Gray), **I** (Ivory), **LA** (Light Almond) and **W** (White)

## Blank Connector

Description	Catalog No.
Smooth, 10-pack	<b>SFSBxx10</b>

xx = Color: **BK** (Black), **GY** (Gray), **EI** (Ivory), **LA** (Light Almond) and **W** (White)

# Molded-In Voice/Data/Video Frames

## Features and Benefits

- High impact-resistant thermoplastic frame
- Meets FCC part 68
- UL Listed 1863 – Communication Circuit Accessory and CSA Certified



RJ11, 6-Pos, 4-Cond  
NS770I

## Molded-In Voice and Data Decorator Frames

Jack	One RJ11 Jack	One RJ11 Jack	Duplex RJ11 Jack	2 Jack Voice Data Frame	
				RJ11 Jack	Category 5e
Position	6-Position	6-Position	6-Position	6-Position	8-Position
Conductors	4-Conductor	6-Conductor	6-Conductor	4-Conductor	8-Conductor
Terminations	Screw	Screw	Screw	Screw	110 IDC
Catalog No.	<b>NS770xx</b>	<b>NS771xx*</b>	<b>NS772xx**</b>	<b>NS784xx</b>	

xx = Color: **BK** (Black), No suffix (Brown), **GY** (Gray), **I** (Ivory), **LA** (Light Almond) and **W** (White)

\*Not available in Black or Gray; \*\*Not available in Black, Brown or Gray



RJ11 + F-Type Coupler  
NS783I

## Molded-In Video and Voice Decorator Frames

Jack	F-Connector	Type	Terminations	Catalog No.	One RJ11 Jack, 6-Position, 4-Conductor	One Cat 5e 110 Punch-Down
					Single F-Type Coupler Bulkhead	Duplex F-Type Coupler Bulkhead
		Female to Female	Screw	<b>NS780xx*</b>	Female to Female	Female to Female
		Female to Female	Screw	<b>NS782xx*</b>	Female to Female	Female to Female
		Female to Female	Screw	<b>NS783xx*</b>	Female to Female	Female to Female
		Female to Female	Screw	<b>NS785xx</b>	Female to Female	Female to Female

xx = Color: **BK** (Black), No suffix (Brown), **GY** (Gray), **I** (Ivory), **LA** (Light Almond) and **W** (White)

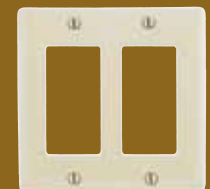
\*Not available in Black, Brown or Gray



110 Punch-Down + F-Type Coupler  
NS785I

## Decorator Wallplates, Standard, Nylon

Color	1-Gang	2-Gang	3-Gang
Almond	<b>NP26AL</b>	<b>NP262AL</b>	<b>NP263AL</b>
Black	<b>NP26BK</b>	<b>NP262BK</b>	<b>NP263BK</b>
Gray	<b>NP26GY</b>	<b>NP262GY</b>	<b>NP263GY</b>
Ivory	<b>NP26I</b>	<b>NP262I</b>	<b>NP263I</b>
Light Almond	<b>NP26LA</b>	<b>NP262LA</b>	<b>NP263LA</b>
White	<b>NP26W</b>	<b>NP262W</b>	<b>NP263W</b>



2-Gang Wallplate  
NP262LA

# Molded-In Plates



## Features and Benefits

- High impact-resistant thermoplastic plate
- Convenient screw down terminals
- Meets FCC part 68
- UL Listed 1863 – Communication Circuit Accessory and CSA Certified



RJ11, 6-Pos, 6-Cond  
NS732I



Duplex RJ11, 6-Pos, 6-Cond  
NS744I



RJ11 + F-Type Coupler  
NS747I



110 Punch-Down + RJ11 + F-Type Coupler  
NS790I

## Molded-In Plates for Voice, 1-Gang

### Standard

Jack	One RJ11 Jack	One RJ11 Jack	Duplex RJ11 Jack	Duplex RJ11 Jack
Position	6-Position	6-Position	6-Position	6-Position
Conductors	4-Conductor	6-Conductor	4-Conductor	6-Conductor
Terminations	Screw	Screw	Screw	Screw
Catalog No.	<b>NS730xx</b>	<b>NS732xx</b>	<b>NS742xx*</b>	<b>NS744xx*</b>

### Mid-Size

Jacks	One RJ11 Jack	Duplex RJ11 Jack
Position	6-Position	6-Position
Conductors	4-Conductor	4-Conductor
Terminations	Screw	Screw
Catalog No.	<b>NS735xx</b>	<b>NS745xx**</b>

**xx** = Color: No suffix (Brown), **I** (Ivory), **LA** (Light Almond), and **W** (White)

\*Not available in Brown; \*\*Available in **I** (Ivory) and **W** (White) only

## Molded-In Plates for Voice and CATV/Satellite, 1-Gang

### Standard

Jack	One RJ11 Jack	One RJ11 Jack	–	–	One C5e 110 Punch-Down, One RJ11 Jack
F-Connector	One F-Type Coupler Bulkhead	One F-Type Coupler Bulkhead	One F-Type Coupler Bulkhead	Duplex F-Type Coupler Bulkhead	One F-Type Coupler Bulkhead
Position	6-Position	6-Position	–	–	6-Position
Conductors	6-Conductor	4-Conductor	–	–	4-Conductor
Type	Female to Female	Female to Female	Female to Female	Female to Female	Female to Female
Catalog No.	<b>NS748xx</b>	<b>NS747xx</b>	<b>NS750xx</b>	<b>NS752xx</b>	<b>NS790xx*</b>

### Mid-Size

Jack	One RJ11 Jack
F-Connector	One F-Type Coupler Bulkhead
Position	6-Position
Conductors	6-Conductor
Type	Female to Female
Catalog No.	<b>NS755xx</b>
	<b>NS751xx</b>

**xx** = Color: **I** (Ivory), **LA** (Light Almond) and **W** (White)

\*Also available in **BK** (Black), No suffix (Brown) and **GY** (Gray)

# Telephone Wall Jacks

## Features and Benefits

- Available in high impact-resistant thermoplastic or stainless steel
- Meets FCC part 68
- UL Listed 1863 – Communication Circuit Accessory and CSA Certified

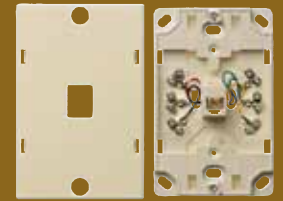


## Telephone Wall Jacks

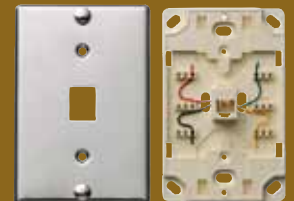
	Thermoplastic			Stainless Steel	
Jack	Wall Phone Jack Quick Connect	Wall Phone Jack	Wall Phone Jack	Wall Phone Jack Quick Connect	Wall Phone Jack
Position	6-Position	6-Position	6-Position	6-Position	6-Position
Conductors	4-Conductor	4-Conductor	6-Conductor	4-Conductor	4-Conductor
Terminations	Punch-Down (Tool Included)	Screw	Screw	Punch-Down (Tool Included)	Screw
Catalog No.	<b>NS721xx*</b>	<b>NS722xx</b>	<b>NS725xx</b>	<b>NS723SS</b>	<b>NS726SS</b>

xx = Color: **I** (Ivory), **LA** (Light Almond) and **W** (White)

\*Not available in Light Almond



Screw Termination  
NS725I



Stainless Steel Quick Connect  
NS725I

## Features and Benefits

- High impact-resistant thermoplastic
- Mounts using screws or double sided tape (both included)
- Meets FCC part 68
- UL Listed 1863 – Communication Circuit Accessory and CSA Certified



Surface Mount Phone Jack  
NS760I

## Telephone Surface Mount Jacks

Description	Telephone Surface Mount Jack	Telephone Surface Mount Jack	Multimedia 1-Port Surface Mount Box**, Jack Not Included	Multimedia 2-Port Surface Mount Box**, Jack Not Included
Position	6-Position	6-Position	–	–
Conductors	4-Conductor	6-Conductor	–	–
Terminations	Screw	Screw	–	–
Catalog No.	<b>NS760xx*</b>	<b>NS761xx*</b>	<b>ISB1xx</b>	<b>ISB2xx</b>

xx = Color: **BK** (Black), **EI** (Electric Ivory), **GY** (Gray), **OW** (Office White) and **W** (White)

\*NS Series is available in **I** (Ivory) and **W** (White) only

\*\*cULus Listed 1863 - Communication Circuit Accessory; use multimedia jacks and AV connectors



Multimedia 2-Port  
ISB2EI

## Hubbell's Total Residential Infrastructure Solution

Select the best when it comes to electrical devices and voice/data products. Hubbell offers the superior performance, innovation and style that your home deserves.



Smart Design for Your Home



Smart Design for Your Home Product Selection Guide



HDTV Connectivity Installation Guide

www.  
**hubbell-premise**  
.com

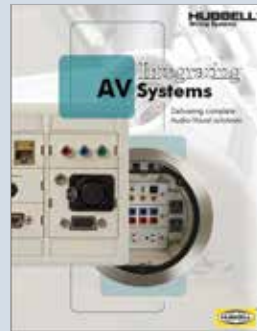


### YOUR COMPLETE ONLINE RESOURCE

Find what you need quickly with our multi-functional online tools. Print, zoom, search and download product information and supportive literature—*anytime, anywhere.*



Flat Panel Connection Enclosure



Integrating AV Systems



AV 110 Everywhere™

**HUBBELL**®  
Premise Wiring

[www.hubbell-premise.com](http://www.hubbell-premise.com)

