



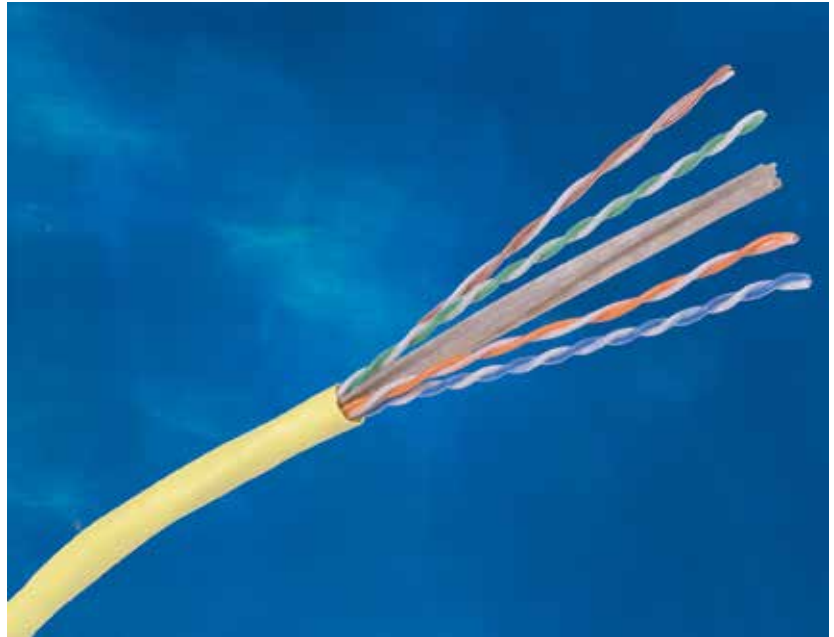
# HUBBELL NextSpeed Category 6 Cable

Sweep Tested from 1-500 MHz.

Guaranteed Headroom Over TIA and ISO Category 6 Requirements.

Reverse Sequential Numbering.

Backward Compatible to Category 5e, 5, and 3.



### SPECIFICATIONS

- ◆ **Conductor:** 23 AWG solid bare copper.
- ◆ **Insulation:** CMP: FEP, CMR: Polyolefin.
- ◆ **Pairing**
  - 1: Blue + White/Blue
  - 2: Orange + White/Orange
  - 3: Green + White/Green
  - 4: Brown + White/Brown
- ◆ **Cabling:** Four unshielded twisted pairs cabled around a star filler member.
- ◆ **Jacket**
  - CMP: Low-Smoke PVC.
  - CMR: PVC.

Hubbell's **NEXTSPEED®** Category 6 cable provides considerable margin above all electrical transmission performance requirements specified in TIA/EIA-568-C.2 and ISO/IEC 11801 (2nd edition) standards.

Configure Hubbell Premise Wiring's component compliant, high-performance **NEXTSPEED®** connectivity (jacks, panels, cords, blocks) with **NEXTSPEED®** Category 6 cable and the result is a cabling solution which provides optimum electrical performance capabilities of handling critical, high-bandwidth applications.

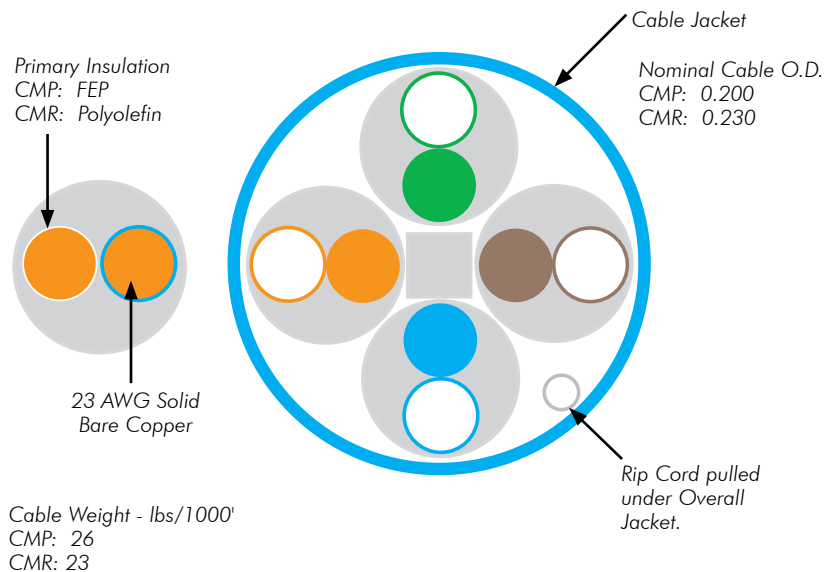
### STANDARDS/VERIFICATIONS

- ANSI/TIA/EIA-568-C.2 Category 6 component specifications.
- IEEE 802.3af (PoE).
- UL Listed.
- NEC Article 800 compliant.

### APPLICATIONS

- ▲ Ethernet: 10/100/1000BASE-T, 10GBASE-T (55m).
- ▲ Data centers: Multi-Gigabit between devices
  - Server to server
  - Server to storage
  - Server to switch
- ▲ PoE applications.
- ▲ Bandwidth intense processing:
  - High-resolution 3D modeling
  - On-line document publishing
  - Real-time video to the desktop
  - Broadband video
  - Digital video

### CABLE FEATURES



**ORDERING INFORMATION**



**NEXTSPEED® Category 6, 4-Pair, UTP Cable**

Color	Catalog No. Riser		Catalog No. Plenum	
	Spool	REELEX*	Spool	REELEX*
Blue	<b>C6SRB</b>	<b>C6RRB</b>	<b>C6SPB</b>	<b>C6RPB</b>
Gray	<b>C6SRGY</b>	<b>C6RRGY</b>	<b>C6SPGY</b>	<b>C6RPGY</b>
White	<b>C6SRW</b>	<b>C6RRW</b>	<b>C6SPW</b>	<b>C6RPW</b>
Yellow	<b>C6SRY</b>	<b>C6RRY</b>	<b>C6SPY</b>	<b>C6RPY</b>

\* REELEX is licensed and patented by Windings Inc.

**RELATED PRODUCTS**

**NEXTSPEED® Jacks, Category 6**

**Order Information**

Catalog No. **HXJ6XX**

**XX** = Color:

- BK'** = Black;
- B'** = Blue;
- EI'** = Electric Ivory;
- GL'** = Gold;
- GY'** = Gray;
- GN'** = Green;
- OW'** = Office White;
- OR'** = Orange;
- P'** = Purple;
- R'** = Red;
- TI'** = Telco Ivory;
- W'** = White;
- Y'** = Yellow.



**NEXTSPEED® Patch Panel, Category 6**

**Order Information**

Description	Catalog No.
Protected PCB	<b>P6EXXU</b>
Universal Angled	<b>P6XXVU</b>
Non-Protected PCB	<b>P6XXU</b>

**XX** = Ports

'24' = 24-port, 1.75"H

'48' = 48-port, 3.50"H

'96' = 96-port, 7.00"H



P6E48U

See page Full Line Catalog page for product options: color, size, length.

**NEXTSPEED® Patch Cords, Category 6**

**Order Information**

Catalog No. **PCX6XX\***

**XX** = Standard Color:

- "BK" = Black; "B" = Blue; "GY" = Gray;
- "Y" = Yellow

\* = Standard Length:

"03" = 3'; "06" = 6'; "08" = 8'; "10" = 10';

"12" = 12'; "16" = 16'; "20" = 20';



PCX6B03

**TRANSMISSION SPECIFICATIONS - Worst Case**

TIA/EIA-568-C.2 Category 6 Compliant;  
ISO/IEC 11801, 2nd ed. Category 6 Compliant

Freq. (MHz)	Ins. loss (dB/100m)	NEXT (dB/100m)	PSNEXT (dB/100m)	ACR (dB)	PSACR (dB)	ELFEXT (dB)	PSELFEXT (dB)	Return loss (dB)
1	2.0	77.5	75.4	75.4	73.4	71.0	68.0	20.2
4	3.7	68.4	66.4	64.6	62.6	59.0	56.0	23.2
8	5.3	63.9	61.9	58.6	56.6	52.9	49.9	24.7
10	5.9	62.5	60.4	56.4	54.4	51.0	48.0	25.2
16	7.5	60.0	57.3	51.7	49.7	46.9	43.9	25.2
31.25	10.6	55.1	53.1	44.3	42.3	41.1	38.1	23.8
62.5	15.3	50.7	48.6	35.1	33.1	35.1	32.1	21.7
100	19.7	47.4	45.4	25.6	25.6	31.0	28.0	20.3
200	28.9	42.9	40.9	13.9	11.9	25.0	22.0	18.2
250	32.7	41.4	39.4	8.6	6.5	23.0	20.0	17.5
350*	39.9	39.2	37.3	-	-	20.1	17.1	16.5
400*	42.9	39.5	36.4	-	-	19.0	15.9	15.8
500*	48.8	36.9	35.0	-	-	16.9	13.9	15.1

\* Frequencies beyond the TIA and ISO requirements are for information only.



[www.hubbell-premise.com](http://www.hubbell-premise.com)



Hubbell Premise Wiring • Hubbell Incorporated (Delaware) • 23 Clara Drive • Suite 103 • Mystic, CT 06355 • Phone (800) 626-0005 • FAX (860) 535-8328  
Printed in U.S.A. Specifications subject to change without notice.

® is a registered trademark of Hubbell Incorporated.

PLDCA020 10/13