

HUBBELL® Premise Wiring

CABLE MANAGEMENT

A M SERIES VERTICAL CABLE MANAGERS

Available Widths	Front Depth	Rear Depth	Catalog No.
6", 8", 10", 12"	10"	-	VMx10
		3"	VMx13
		8"	VMx18
		10"	VMx20

x = Width: 6", 8", 10" or 12"

B M SERIES HORIZONTAL CABLE MANAGERS

Available Heights (RU)	Front Depth	Rear Depth	Front Cover	Catalog No.
1, 2, 3, 4	4"	-	Included	HMx4C
	7"	-	Included	HMx7C
	7"	7"	Included	HMx77C
	4"	-	-	HMx4

x = Height: 1, 2, 3 or 4 Rack Units

C S SERIES VERTICAL CABLE MANAGERS

Width	Front Depth	Rear Depth	Full Kit	Catalog No.
4"	5"	5"	-	VS74x
6"	5"	5"	-	VS76x
6"	5"	5"	2 verticals + relay rack	CS1976x

x = Add H to end of Catalog Number for Hinged Cover

D S SERIES HORIZONTAL CABLE MANAGERS

Available Heights (RU)	Front Depth	Cover	Catalog No.
1, 2	3"	-	HSx3
		Included	HSx3C

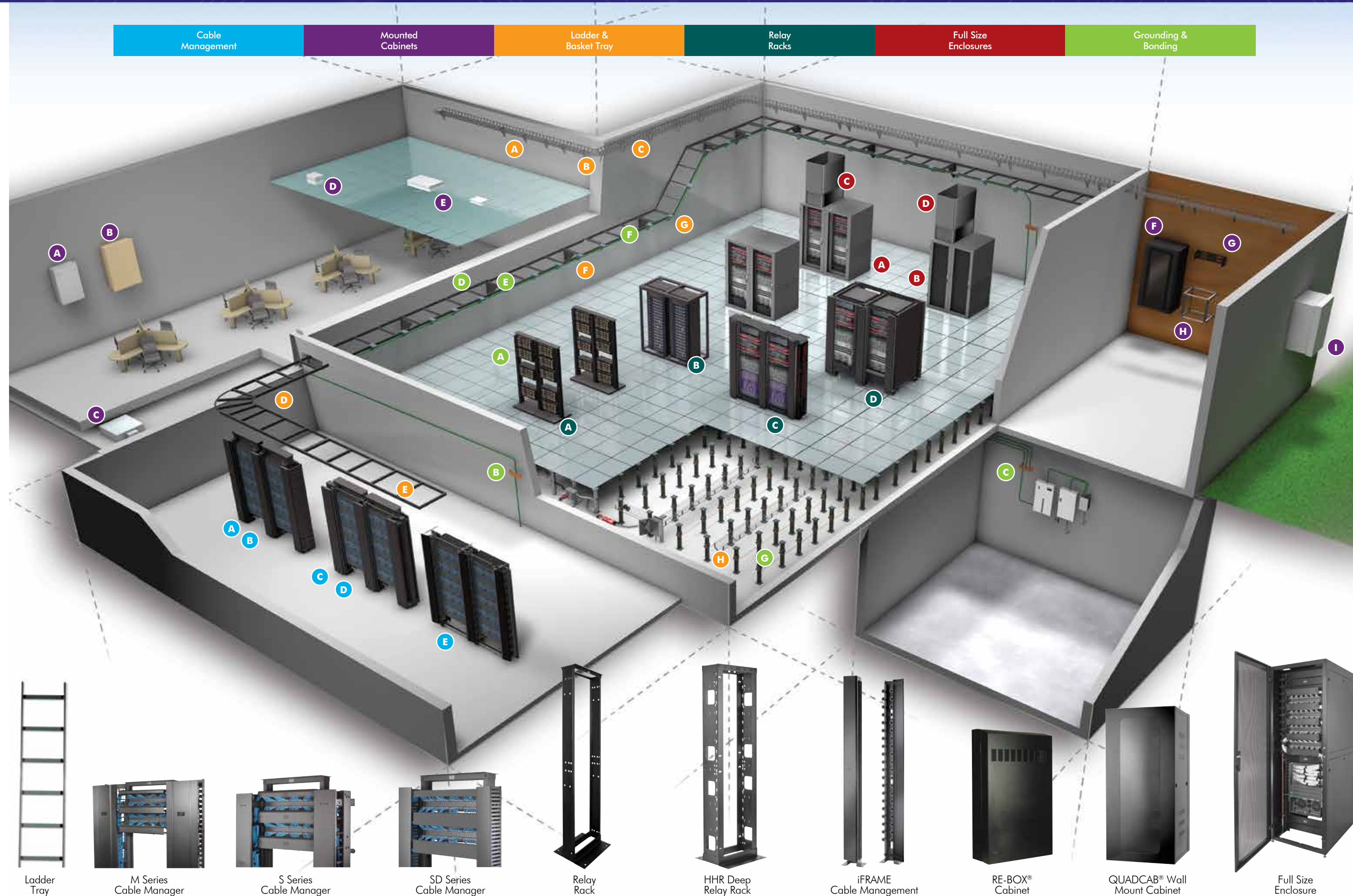
x = Height: 1 or 2 Rack Units

E SD SERIES CABLE MANAGERS

Type	Depth	Dimension	Catalog No.
Vertical	4"	5" width	VSD45
Horizontal	3"	1 RU	HSD13
Horizontal	3"	2 RU	HSD23

CABLE MANAGEMENT SPOOLS

Type	Quantity	Depth	Catalog No.
Spool	50	3"	ICKS5
		6"	ICKS56
		8"	ICKS59



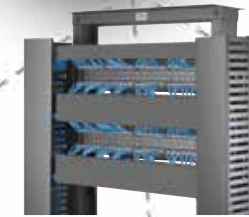
Ladder Tray



M Series Cable Manager



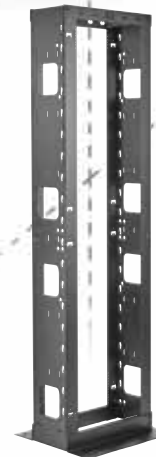
S Series Cable Manager



SD Series Cable Manager



Relay Rack



HHR Deep Relay Rack



iFRAME Cable Management



RE-BOX Cabinet



QUADCAB® Wall Mount Cabinet



Full Size Enclosure

MOUNTED CABINETS

A CONSOLIDATION POINT ENCLOSURES

Dimensions	Color	Catalog No.
21"x14.5"x4.5"	Ivory	CPE1
	Black	CPEB

B RE-BOX® 100LB CAPACITY CABINET

Maximum Switch Depth	Switch Units	Patch Panel Units	Catalog No.
14"	2	2	RE2x
	5	4	RE4x
22"	5	4	RE4Xx

x = Color: Light Gray is standard, add B for Black

ZONE BOXES

Description	Rack Units	Catalog No.
Raised floor mount	4	ZAFB4U6
	8	ZAFB8U8
Ceiling mount	5	ZCB5UP
	7	ZCB7UA

E CEILING ENCLOSURES

Description	Catalog No.
White	AVCE1
Plenum Rated, White	AVCE1P
Data kit included	AVCE1KIT
Wireless Access Point	WBC1
Cisco® Aironet® 1200	WBC12

F QUADCAB®, 400LB CAPACITY WALL MOUNT CABINETS

Available Depths	Rack Units	Door Style	Catalog No.
20", 26", 36"	12	Window	HSQ24xXX
		Solid	HSQ24SXX
19	19	Window	HSQ36xXX
		Solid	HSQ36SXX
26	26	Window	HSQ48xXX
		Solid	HSQ48SXX

XX = Depth: 20" is standard, add 26 for 26", 36 for 36"

G WALL MOUNT BRACKET, BOTTOM HINGE

Available Depths	Rack Units	Catalog No.
4"	1	HPWWB1Ux
4", 8"	2	HPWWB2Ux
4", 8"	4	HPWWB4Ux
4", 8", 18"	6	HPWWB6Ux

x = Depth: 4", 8" or 18" as available

WALL MOUNT BRACKET, SIDE HINGE

Available Depths	Height	Catalog No.
4", 8"	1U	BRMCCMB19X35Xx
	2U	BRMCCMB19X7Xx

x = Depth: 4" or 8"

H WALL MOUNT SWING FRAME

Available Heights	Rack Units	Catalog No.
24", 36", 48"	12, 19, 26	HPWWMRXX

XX = Height: 24", 36" or 48"

I RE-BOX® INDUSTRIAL ENCLOSURE, NEMA RATED

Available Heights	Depth	NEMA	Air Cond.	Catalog No.
24", 36", 48"	12"	4R	-	IRxUG
24", 36"	12"	4X	-	IRxUSS
24", 36", 48"	12"	4R	1000BTU	IRx21APG
24", 36"	24"	4R	3000BTU	IRx22APG

x = Height: Insert 2 for 24", 3 for 36" or 4 for 48"

Cisco® and Aironet® are registered trademarks of Cisco Systems, Inc.



