

HUBBELL® Premise Wiring

CABLE MANAGEMENT

A M SERIES VERTICAL CABLE MANAGERS

Available Widths	Front Depth	Rear Depth	Catalog No.
6", 8", 10", 12"	10"	-	VMx10
		3"	VMx13
		8"	VMx18
		10"	VMx20

x = Width: 6", 8", 10" or 12"

B M SERIES HORIZONTAL CABLE MANAGERS

Available Heights (RU)	Front Depth	Rear Depth	Front Cover	Catalog No.
1, 2, 3, 4	4"	-	Included	HMx4C
	7"	-	Included	HMx7C
	7"	7"	Included	HMx77C
	4"	-	-	HMx4

x = Height: 1, 2, 3 or 4 Rack Units

C S SERIES VERTICAL CABLE MANAGERS

Width	Front Depth	Rear Depth	Full Kit	Catalog No.
4"	5"	5"	-	VS74x
6"	5"	5"	-	VS76x
6"	5"	5"	2 verticals + relay rack	CS1976x

x = Cover: add H to end of Catalog Number for Hinged Cover

D S SERIES HORIZONTAL CABLE MANAGERS

Available Heights (RU)	Front Depth	Cover	Catalog No.
1, 2	3"	-	HSx3
		Included	HSx3C

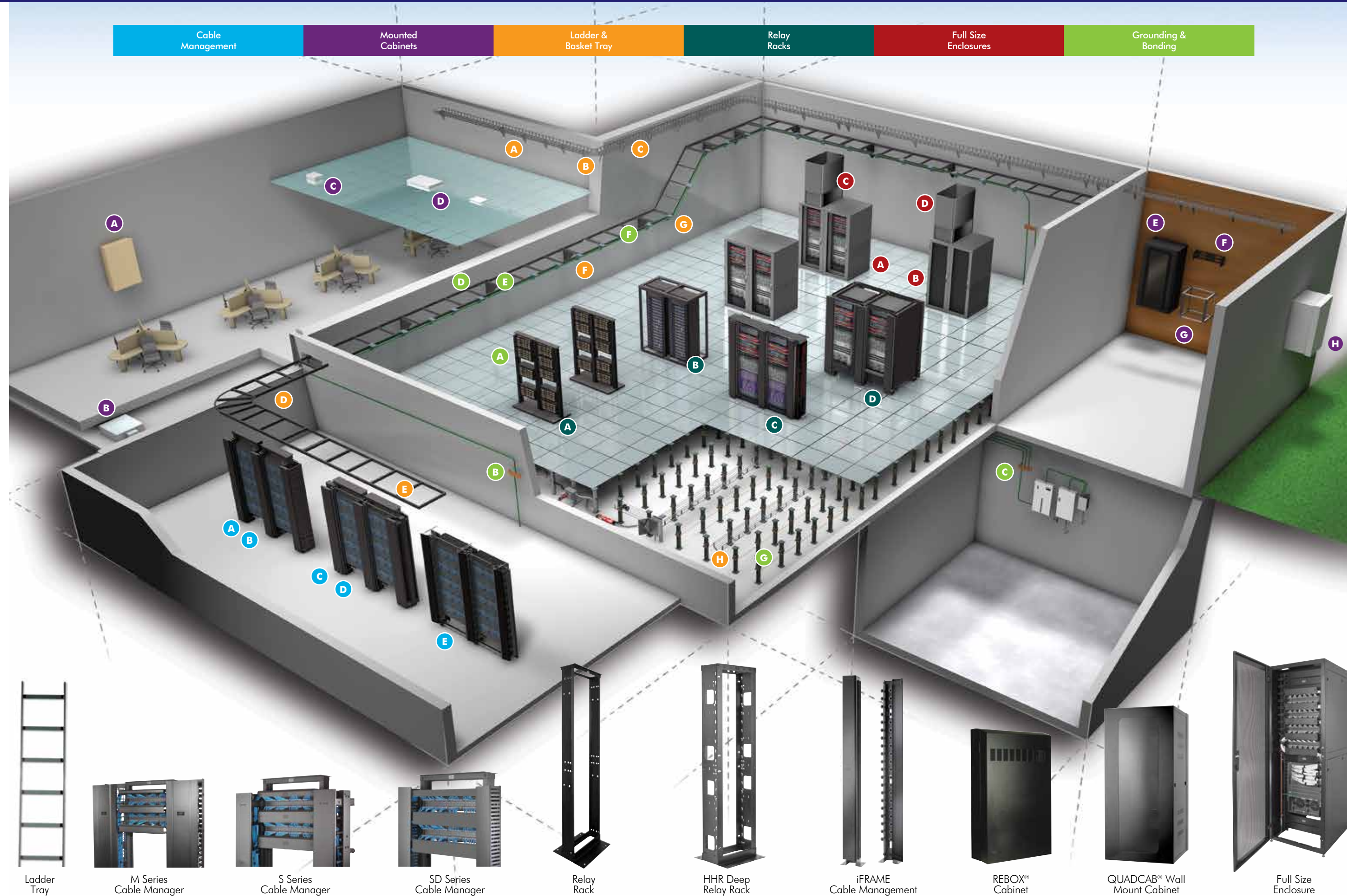
x = Height: 1 or 2 Rack Units

E SD SERIES CABLE MANAGERS

Type	Depth	Dimension	Catalog No.
Vertical	4"	5" width	VSD45
Horizontal	3"	1 RU	HSD13
Horizontal	3"	2 RU	HSD23

CABLE MANAGEMENT SPOOLS

Type	Quantity	Depth	Catalog No.
Spool	50	3"	ICKS5
		6"	ICKS56
		8"	ICKS59



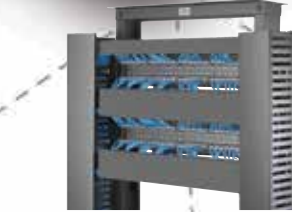
Ladder Tray



M Series Cable Manager



S Series Cable Manager



SD Series Cable Manager



Relay Rack



HHR Deep Relay Rack



iFRAME Cable Management



REBOX Cabinet



QUADCAB® Wall Mount Cabinet



Full Size Enclosure

MOUNTED CABINETS

A REBOX® 100LB CAPACITY CABINETS

Maximum Switch Depth	Switch Units	Patch Panel Units	Catalog No.
14"	2	2	RE2x
	5	4	RE4x
22"	5	4	RE4Xx

x = Color: Light Gray is standard, add B for Black

B ZONE BOXES

Description	Rack Units	Catalog No.
Raised floor mount	4	ZAFB4U6
	8	ZAFB8U8
Ceiling mount	5	ZCB5UP
	7	ZCB7UA

D CEILING ENCLOSURES

Description	Catalog No.
White	AVCE1
Plenum Rated, White	AVCE1P
Data kit included	AVCE1KIT
Wireless Access Point	WBC1
Cisco® Aironet® 1200	WBC12

E QUADCAB®, 250LB CAPACITY WALL MOUNT CABINETS

Height	Rack Units	Door Style	Catalog No.
24"	12	Window	HLQ24
		Mesh	HLQ24M
36"	19	Window	HLQ36
		Mesh	HLQ36M
48"	25	Window	HLQ48
		Mesh	HLQ48M

F QUADCAB®, 400LB CAPACITY WALL MOUNT CABINETS

Available Depths	Rack Units	Door Style	Catalog No.
20", 26", 36"	12	Window	HSQ24xx
		Solid	HSQ24Sxx
	19	Window	HSQ36xx
		Solid	HSQ36Sxx
	26	Window	HSQ48xx
		Solid	HSQ48Sxx

xxx = Depth: 20" is standard; add 26 for 26", 36 for 36"

G WALL MOUNT BRACKETS

Available Depths	Rack Units	Hinge	Catalog No.
4"	1	Bottom	HPWWB1Ux
4", 8"	2	Bottom	HPWWB2Ux
4", 8"	4	Bottom	HPWWB4Ux
4", 8", 18"	6	Bottom	HPWWB6Ux
4", 8"	1	Side	BRMCCMB19X35Xx
4", 8"	2	Side	BRMCCMB19X7Xx

x = Depth: 4", 8" or 18" as available

H WALL MOUNT SWING FRAMES

Available Heights	Rack Units	Catalog No.
24", 36", 48"	12, 19, 26	HPWWMRxxx

xxx = Height: add 24 for 24", 36 for 36" or 48 for 48"

I REBOX® INDUSTRIAL ENCLOSURES, NEMA RATED

Available Heights	Depth	NEMA	Air Cond.	Catalog No.
24", 36", 48"	12"	4R	-	IRxUG
24", 36"	12"	4X	-	IRxUSS
24", 36", 48"	12"	4R	1000BTU	IRx21APG
24", 36"	24"	4R	3000BTU	IRx22APG

x = Height: Insert 2 for 24", 3 for 36" or 4 for 48"

Cisco® and Aironet® are registered trademarks of Cisco Systems, Inc.



LADDER & BASKET TRAY

A BASKET TRAY FOR OVERHEAD, 118" LENGTH

Available Widths	Depth	Catalog No.
4", 6", 8", 12", 16", 18", 20", 22", 24", 26", 28", 30", 32"	2"	HPWW02_{xx}
4", 6", 8", 12", 16", 18", 20", 22", 24", 28"	4"	HPWW04_{xx}
8", 12", 16", 18", 20", 22", 24"	6"	HPWW06_{xx}
8", 12", 16", 18", 20"	8"	HPWW08_{xx}

xx = Width: 04", 06", 08", 12", 16", 18", 20", 22", 24", 26", 28", 30" or 32" as available

B BASKET TRAY, SUPPORTS

Available Widths	Type	Catalog No.
4", 6", 8", 12", 16", 18", 20", 24"	Shelf	HPWW5SP_{xx}
	Center	HPWWCSP_{xx}
12", 16", 18", 20", 24"	Ceiling	HPWWGSP_{xx}
6", 8", 12", 16", 18", 20"	Term	HPWWTST_{xx}

xx = Width: 04", 06", 08", 12", 16", 18", 20", 22" or 24" as available
Pre-galvanized is standard; add B to end of Catalog Number for Black Painted

C BASKET TRAY, INSTALLATION ACCESSORIES

Description	Quantity	Catalog No.
Splice Kit	50	HPWWSKT
Washer Support	50	HPWWST
Vertical down	1	HPWWVDN
Corner Splice	1	HPWCSP
Bar Splice	50	HPWWBSP
Trapeze Kit	50	HPWWTZS

Pre-galvanized is standard; add B to end of Catalog Number for Black Painted

D LADDER TRAY, CURVED SECTIONS

Available Widths	Color	Type	Catalog No.
6", 12", 18", 24"	Black	90° Turn	HLF_{xx}90B
		90° Inside	HLI_{xx}90B
		90° Outside	HLO_{xx}90B

xx = Width: insert 06, 12, 18 or 24 for inches

E LADDER TRAY, STRAIGHT SECTIONS

Available Widths (in)	Color	Length (ft)	Catalog No.
6", 12", 18", 24"	Black	6'	HLS06_{xx}B
		10'	HLS10_{xx}B
	Gray	6'	HLS06_{xx}G
		10'	HLS10_{xx}G

xx = Width: insert 06, 12, 18 or 24 for inches

F LADDER TRAY, SUPPORTS

Available Widths	Color	Type	Catalog No.
6", 12", 18", 24"	Black	Triangle Support	HLTSB_{xx}B
6", 12", 18"	Black	Radius Drop	HLCD_{xx}

xx = Width: insert 06, 12, 18 or 24 for inches as available

G LADDER TRAY, INSTALLATION ACCESSORIES

Description	Color	Catalog No.
Splice Kit	Black	HLBSK
T-Junction	Black	HLTK
Ceiling Mount	Black	HLCMK
Swivel Splice	Black	HLSSK

H BASKET TRAY FOR UNDER FLOOR

Available Lengths (ft)	Available Widths (in)	Depth (in)	Catalog No.
2'	22"	Flat	HPWU00_{xxyy}
2', 4', 6'	6", 12", 22"	2"	HPWU02_{xxyy}
		4"	HPWU04_{xxyy}
		6"	HPWU06_{xxyy}
	12", 22"	8"	HPWU08_{xxyy}

xx = Width: insert 06, 12 or 22 for inches as available
yy = Length: insert 02 (2'), 04 (4') or 06 (6') as available
Pre-galvanized is standard; add B to end of Catalog Number for Black Painted

RELAY RACKS

A RELAY RACKS, #12-24 THREADED

Available Heights	Rack Units	Rails	Catalog No.
48", 66", 84", 96"	24, 36, 45, 51	3"	HPW_{xx}RR19
84"	45	6"	HPW84RR19D

xx = Height: insert 48, 66, 84 or 90 for inches

B 4 POST SERVER FRAMES

Height	Available Depths	Mount	Catalog No.
84", 45RU	24", 29", 36", 42", 48"	M6 Cage Nut #12-24 threaded	SF8419_{xx} SF8419_{xx}T

xx = Depth: insert 24, 29, 36, 42 or 48 for inches

C iFRAME® INTEGRATED CABLE MANAGEMENT

Height	Depth	Mount	Catalog No.
84", 45RU	14"	#12-24 thread	IS7
	18"	#12-24 thread	IS70718
	20"	#12-24 thread	IS70920

HHR DEEP RELAY RACKS

Height	Depth	Mount	Catalog No.
84", 45RU	10"	#12-24 thread	HHR45U10
	16"	#12-24 thread	HHR45U16

D iFRAME® ACCESSORIES

Use With	Cable Mgmt Catalog No.	4-Post Catalog No.
IS7	ICKK	ISK4P
IS70718	ICKCL7	ISK4P7
IS70920	ICKCL9	ISK4P9

FULL SIZE ENCLOSURES

FULL SIZE ENCLOSURES

Rail	Width	Height	Available Depths	Catalog No.
A #12-24	30"	80" 43RU	32", 36"	H2N80_{xx}
		84" 45RU	32", 36", 42", 48"	H2N84_{xx}
		90" 48RU	42", 48"	H2N90_{xx}
		80" 43RU	42", 48"	H2S80_{xx}
B M6	24"	84" 45RU	36", 42", 48"	H2S84_{xx}
		90" 48RU	42", 48"	H2S90_{xx}

xx = Depth: insert 32, 36, 42 or 48 for inches as available

CHIMNEYS FOR FULL SIZE ENCLOSURES

Cabinet	Height Min.	Height Max.	Catalog No.
C Network	21"	36"	H2NCH2136
	36"	66"	H2NCH3666
D Server	21"	36"	H2SCH2136
	36"	66"	H2SCH3666

RAIL ACCESSORIES

Cabinet	Height (in)	Catalog No.
M6 rail for Network	80", 84", 90"	H2NM6R_{xx}

xx = Height: insert 80, 84 or 90 for inches

FULL SIZE ENCLOSURE ACCESSORIES

Cabinet	Description	Catalog No.
Network, Server	Cabinet Joining Kit	H2JKT
	Right hand door hinges	H2RH
	Caster Kit	H2KMB
	Fan Kit	H2KNF
Server	Fan Kit	H2KSF

Cable Management | Mounted Cabinets | Ladder & Basket Tray | Relay Racks | Full Size Enclosures | Grounding & Bonding

GROUNDING & BONDING

BUSBARS*, 95% COPPER

Height	Length	Mount	Catalog No.
A 0.75"	19"	Rail	HBBBHR19KT
	36"	Off-Rail	HBBBVR36KT
B 2"	10"	Wall	HBBB14210A
	24"	Wall	HBBB14224B
C 4"	16"	Wall	HBBB14416H
	20"	Wall	HBBB14420J

*Insulators included
95% Copper is standard; add TP to the end of Catalog Number for Tin Plated

MOUNTING BRACKETS

Mount	Qty	Catalog No.
Ladder	10	HGBTEBCBRKL10
Basket Tray	10	HGBTEBCBRKW10
Extruded Ladder	1	HGBTEBCBRKR
Wall, Insulator	1	HGBSETH
Rail	1	HGBVRBKT

BONDING JUMPERS

Type	Length	Qty	Mount	Catalog No.
Lug	9"	1	Ladder	HGRKTD9D
Split Bolt	9"	5	Basket Tray	HGRKTWB5

BONDING CONDUCTORS

Type	Length	Qty	Catalog No.
Lug	90", 144", 240", 360", 600", 900"	1	HGRKTX_{xx}D

xx = Length: insert 90, 144, 240, 360, 600 or 900 for inches

RAISED FLOOR CLAMPS

Pedestal	Range	Catalog No.
Round, Square	0.75"-1.88"	HGBGXP1828RF
Round	1-1.25"	HGBGP1526G1
Round, Square	0.75-1"	HGBGRF4C3



Busbar | Bonding Jumper Kit | Horizontal Rack Power Strip | Cable Ties

ALSO AVAILABLE

POWER STRIPS

Mount	Amp/Volts	Outlets	Catalog No.
Vertical	15A-120V	10 Outlets	PR104
	20A-120V	10 Outlets	PR10420
		20 Outlets	PR20620
Horizontal Rack	15A-120V	0 Frt, 10 Rear	HPWPWR
		0 Frt, 6 Rear	PR0615
	20A-120V	0 Frt, 10 Rear	PR10120
		0 Frt, 10 Rear, w Current Monitor	PR1020
20/16A-120/250V	10 Frt, 0 Rear	PR10720	

VELCRO® BRAND ONE-WRAP® CABLE TIES

Length	Quantity	Catalog No.
8"	10-pack	HPWCVF_{xx}8

xx = Color: insert BK (Black), BL (Blue), OR (Orange), RD (Red), or YL (Yellow)

BULK VELCRO® PUCKS

Description	Catalog No.
1"W x 10'L, 10-pack	HPWCVFBK120
0.5"W x 75'L	HVFBK575
0.5"W x 600'L	HVFBK5600

SHELVING

Depth (in)	Capacity	Type	Catalog No.
14"	50lb	Solid	MCCCS19
		Perforated	MCCCS19P
19"	75lb	Solid	MCCCS19
20"	200lb	Solid	MCCCS19HD

RAIL MOUNTED SECURITY ENCLOSURES

Height	Use With	Catalog No.
4-6RU	All racks	HSE46
7-12RU	All racks	HSE712
22RU	HHR Racks only	HSE22

OUTDOOR RATED AIR CONDITIONERS

NEMA Rated	BTU	Catalog No.
4R	1000	IRAC1
	3000	IRAC3

VELCRO® and ONE-WRAP® are registered trademarks of Velcro Industries, B.V.



Cable Management Product Guide

