

## N-Series Adapters

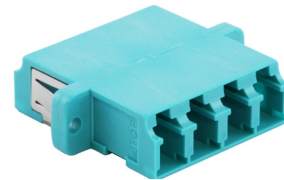
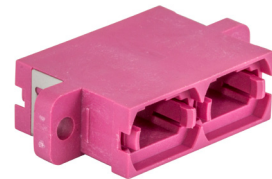
- Industry standard form, fit and function
- Duplex and Quad available in 6-packs
- Simplex available in 6- and 12-packs

### Configurations

- LC
- SC
- ST
- FC
- Simplex
- LC, SC Duplex
- LC, SC Quad
- MPO Configurations
  - Simplex
  - Duplex
- MPO Simplex, Type 'B' polarity reversal

### Colors

- Blue
- Orange
- Green
- Beige
- Red
- Black
- Yellow
- Aqua



## N-Series Adapters

### LC Duplex Adapters

Clip installed; 6-pack; zirconia ceramic sleeve; Screw Mount includes mounting hardware

Color	Snap Mount	Screw Mount
Aqua	<b>FANLCDSC6AQ</b>	<b>FANLCDSS6AQ</b>
Beige	<b>FANLCDSC6BE</b>	<b>FANLCDSS6BE</b>
Black	<b>FANLCDSC6BK</b>	<b>FANLCDSS6BK</b>
Blue	<b>FANLCDSC6B</b>	<b>FANLCDSS6B</b>
Green	<b>FANLCDSC6GN</b>	<b>FANLCDSS6GN</b>
Orange	<b>FANLCDSC6OR</b>	<b>FANLCDSS6OR</b>
Red	<b>FANLCDSC6R</b>	<b>FANLCDSS6R</b>
Yellow	<b>FANLCDSC6Y</b>	<b>FANLCDSS6Y</b>

### SC Duplex Adapters

Clip installed; 6-pack; zirconia ceramic sleeve; Screw Mount includes mounting hardware

Color	Snap Mount	Screw Mount
Aqua	<b>FANSCDSC6AQ</b>	<b>FANSCDSS6AQ</b>
Beige	<b>FANSCDSC6BE</b>	<b>FANSCDSS6BE</b>
Black	<b>FANSCDSC6BK</b>	<b>FANSCDSS6BK</b>
Blue	<b>FANSCDSC6B</b>	<b>FANSCDSS6B</b>
Green	<b>FANSCDSC6GN</b>	<b>FANSCDSS6GN</b>
Orange	<b>FANSCDSC6OR</b>	<b>FANSCDSS6OR</b>
Red	<b>FANSCDSC6R</b>	<b>FANSCDSS6R</b>
Yellow	<b>FANSCDSC6Y</b>	<b>FANSCDSS6Y</b>

Note: Any green zirconia LC or SC adapter is suitable for APC application.

### ST Style Adapters

Description	Color	Catalog No.
Screw mount, clip installed, ST duplex, 6-pack	Blue	<b>FANSTDSS6</b>
Bulkhead, ST-simplex, 12-pack, with nuts and washers	Black Oxide, Metal	<b>FANSTSS12</b>

### MPO Duplex Adapters

Fits any SC simplex cut-out (1.024" x 0.375" recommended), 6-pack

Color	Snap Mount	Screw Mount
Aqua	<b>FANMTPDAQ</b>	<b>FANMTPDSAQ</b>
Beige	<b>FANMTPDBE</b>	<b>FANMTPDSBE</b>
Black	<b>FANMTPDBK</b>	<b>FANMTPDSBK</b>
Green	<b>FANMTPDGN</b>	<b>FANMTPDSGN</b>
Violet	<b>FANMTPDVI</b>	<b>FANMTPDSVI</b>

### FC Adapters

Description	Finish	Catalog No.
Bulkhead, singlemode, 6-pack, Diameter: 0.38", flat 0.31" (Double D)	Nickle Plated	<b>FANFCSS6</b>

### LC Quad Adapters

Clip installed; 6-pack; zirconia ceramic sleeve; screw mount includes mounting hardware

Color	Snap Mount	Screw Mount
Aqua	<b>FANLCQSC6AQ</b>	<b>FANLCQSS6AQ</b>
Beige	<b>FANLCQSC6BE</b>	<b>FANLCQSS6BE</b>
Black	<b>FANLCQSC6BK</b>	<b>FANLCQSS6BK</b>
Blue	<b>FANLCQSC6B</b>	<b>FANLCQSS6B</b>
Green	<b>FANLCQSC6GN</b>	<b>FANLCQSS6GN</b>
Orange	<b>FANLCQSC6OR</b>	<b>FANLCQSS6OR</b>
Red	<b>FANLCQSC6R</b>	<b>FANLCQSS6R</b>
Yellow	<b>FANLCQSC6Y</b>	<b>FANLCQSS6Y</b>

### SC Simplex Adapters

Clip installed; 6-pack; zirconia ceramic sleeve; Screw Mount includes mounting hardware

Color	Snap Mount	Screw Mount
Aqua	<b>FANSCSSC12AQ</b>	<b>FANSCSS12AQ</b>
Beige	<b>FANSCSSC12BE</b>	<b>FANSCSS12BE</b>
Black	<b>FANSCSSC12BK</b>	<b>FANSCSS12BK</b>
Blue	<b>FANSCSSC12B</b>	<b>FANSCSS12B</b>
Green	<b>FANSCSSC12GN</b>	<b>FANSCSS12GN</b>
Orange	<b>FANSCSSC12OR</b>	<b>FANSCSS12OR</b>
Red	<b>FANSCSSC12R</b>	<b>FANSCSS12R</b>
Yellow	<b>FANSCSSC12Y</b>	<b>FANSCSS12Y</b>

### SC to ST Style Adapters

Description	Color	Catalog No.
SC cut-out, simplex 12-pack, 0.525" x 0.390"	Blue	<b>FANSTSCSSC12</b>
SC cut-out, simplex 6-pack, 1.024" x 0.375"	Blue	<b>FANSTSCDSC6</b>

### MPO Simplex Adapters

Fits any SC simplex cut-out (0.252" x 0.390" recommended), 6-pack, compatible with 12 or 24 fiber MPO connectors

Color	Snap Mount	Screw Mount
Aqua	<b>FANMTPAQ</b>	<b>FANMTPSAQ</b>
Beige	<b>FANMTPBE</b>	<b>FANMTPSBE</b>
Black	<b>FANMTPBK</b>	<b>FANMTPSBK</b>
Green	<b>FANMTPGN</b>	<b>FANMTPSGN</b>
Violet	<b>FANMTPVI</b>	<b>FANMTPSVI</b>

### Reversed Polarity

Gray	<b>FANMTPRPGY</b>	<b>FANMTPSRPGY</b>
------	-------------------	--------------------

Note: Standard polarity is key-up/key-down. Reversed polarity is key-up/key-up